



CLARION PARTNERS

For Lease

Seattle South Business Park  
Building 5

18285 Andover Park W  
Tukwila, WA

28,800 Square Feet Available



### BUILDING HIGHLIGHTS

- 28,800 SF total available
- 1,701 SF office
- 4 dock-high doors
- 1 grade-level door
- 24' clear height
- Quick and easy access to I-5, I-405 and SR 167
- 10 minutes to Sea-Tac Airport
- Only minutes to Southcenter retail
- Call for asking rates

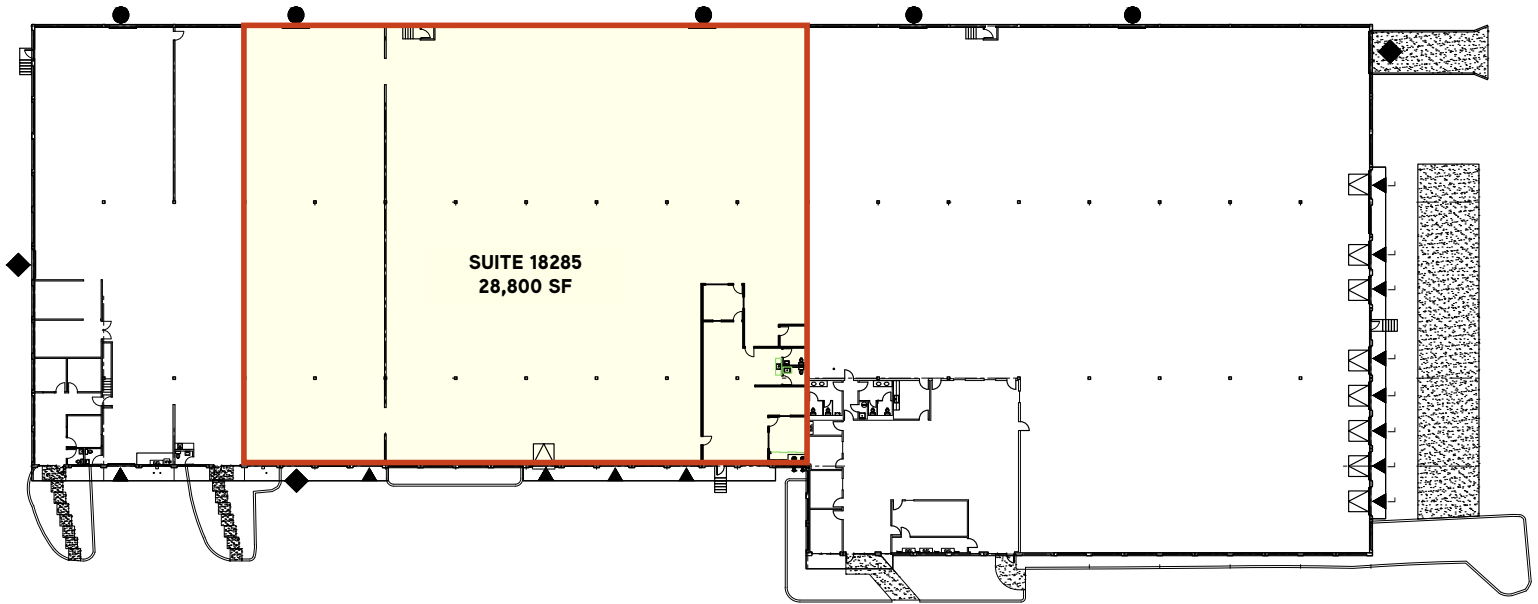




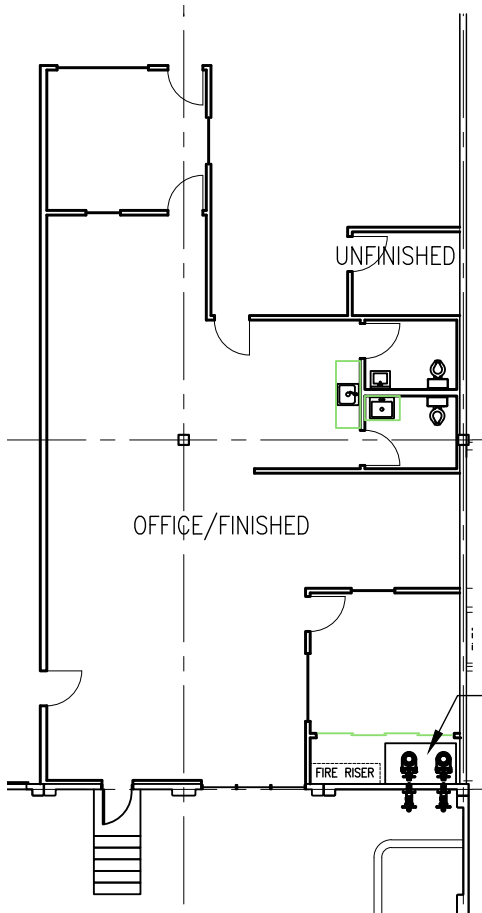
# CLARION PARTNERS

Seattle South Business Park

## 1ST FLOOR PLAN



## OFFICE PLAN



▲ Dock-high door    ◆ Grade-level door



## CLARION PARTNERS

[www.clarionpartners.com](http://www.clarionpartners.com)

For more information on this opportunity, please contact



MATT MCGREGOR, SIOR  
+1 206 624 7401  
[matt.mcgregor@colliers.com](mailto:matt.mcgregor@colliers.com)

BILL CONDON, SIOR  
+1 206 235 9732  
[bill.condon@colliers.com](mailto:bill.condon@colliers.com)