



South Park Eximius

9520 TENTH AVENUE SOUTH, SUITE 150, SEATTLE, WA

FOR LEASE



**Kidder
Mathews**

CHRIS CORR
206.248.7324
chris.corr@kidder.com

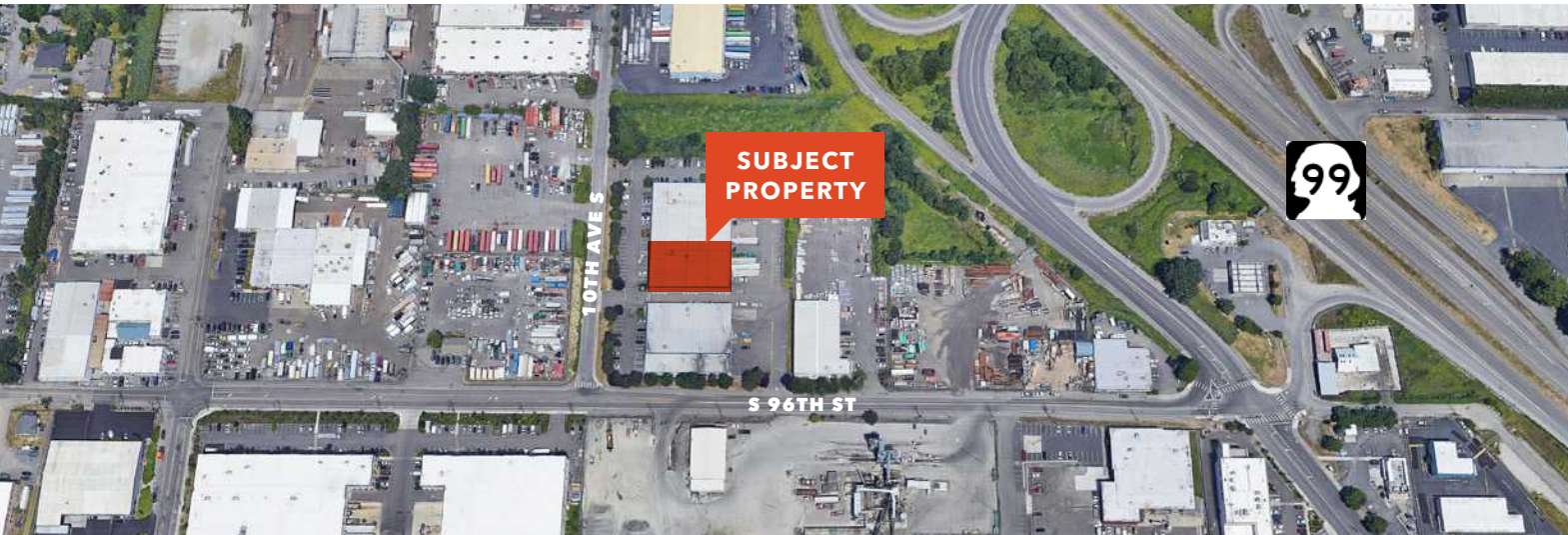
JIM KIDDER, SIOR
206.248.7328
jim.kidder@kidder.com

This information supplied herein is from sources we deem reliable. It is provided without any representation, warranty, or guarantee, expressed or implied as to its accuracy. Prospective Buyer or Tenant should conduct an independent investigation and verification of all matters deemed to be material, including, but not limited to, statements of income and expenses. Consult your attorney, accountant, or other professional advisor.

FOR LEASE

South Park Eximius

9520 TENTH AVENUE SOUTH, SUITE 150, SEATTLE, WA



EXCELLENT South Park location

GROSS 20,491 square feet

OFFICE 7,648 SF (4,680 SF upper floor, 2,968 SF lower office)

WAREHOUSE 12,843 SF

LOADING doors include 1 grade-level and 3 dock-high

EXCELLENT parking

END cap

MONTHLY NNN lease rate of \$23,565

AVAILABLE

LOCAL OWNERSHIP deal makers

NO city of Seattle B&O tax

UNINCORPORATED King County

ZONED I

AVAILABLE May 1, 2024

CHRIS CORR
206.248.7324
chris.corr@kidder.com

JIM KIDDER, SIOR
206.248.7328
jim.kidder@kidder.com

KIDDER.COM

This information supplied herein is from sources we deem reliable. It is provided without any representation, warranty, or guarantee, expressed or implied as to its accuracy. Prospective Buyer or Tenant should conduct an independent investigation and verification of all matters deemed to be material, including, but not limited to, statements of income and expenses. Consult your attorney, accountant, or other professional advisor.

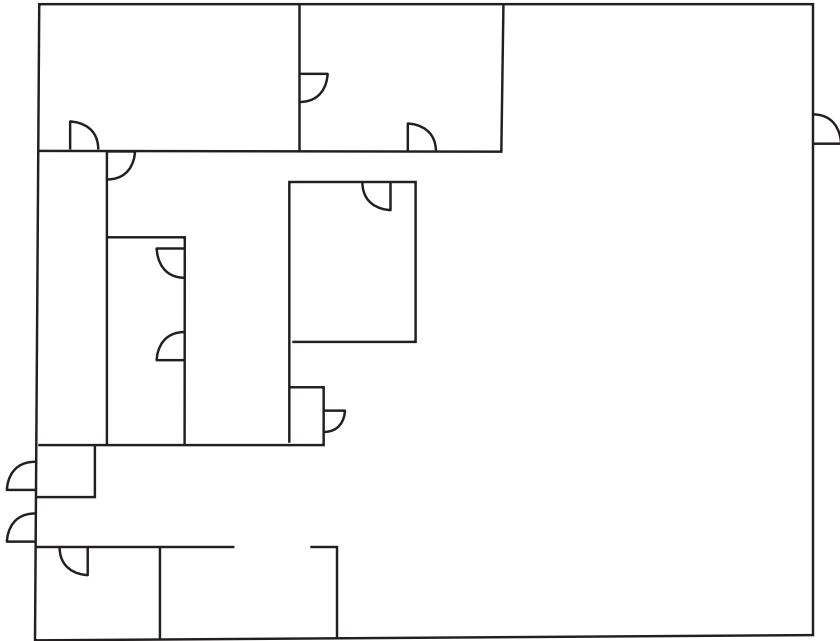
km Kidder Mathews

FOR LEASE

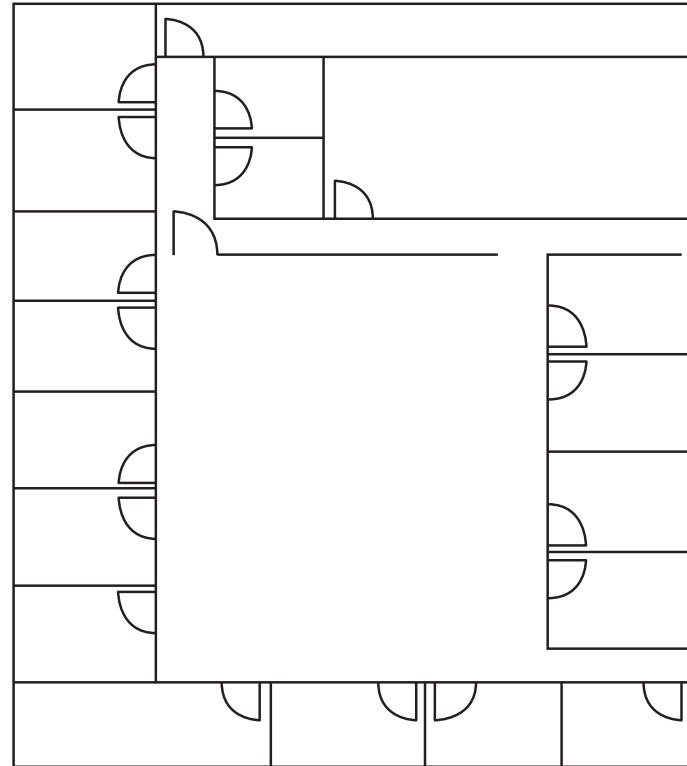
South Park Eximius

9520 TENTH AVENUE SOUTH, SUITE 150, SEATTLE, WA

Floorplans



FIRST FLOOR



SECOND FLOOR

KIDDER.COM

This information supplied herein is from sources we deem reliable. It is provided without any representation, warranty, or guarantee, expressed or implied as to its accuracy. Prospective Buyer or Tenant should conduct an independent investigation and verification of all matters deemed to be material, including, but not limited to, statements of income and expenses. Consult your attorney, accountant, or other professional advisor.

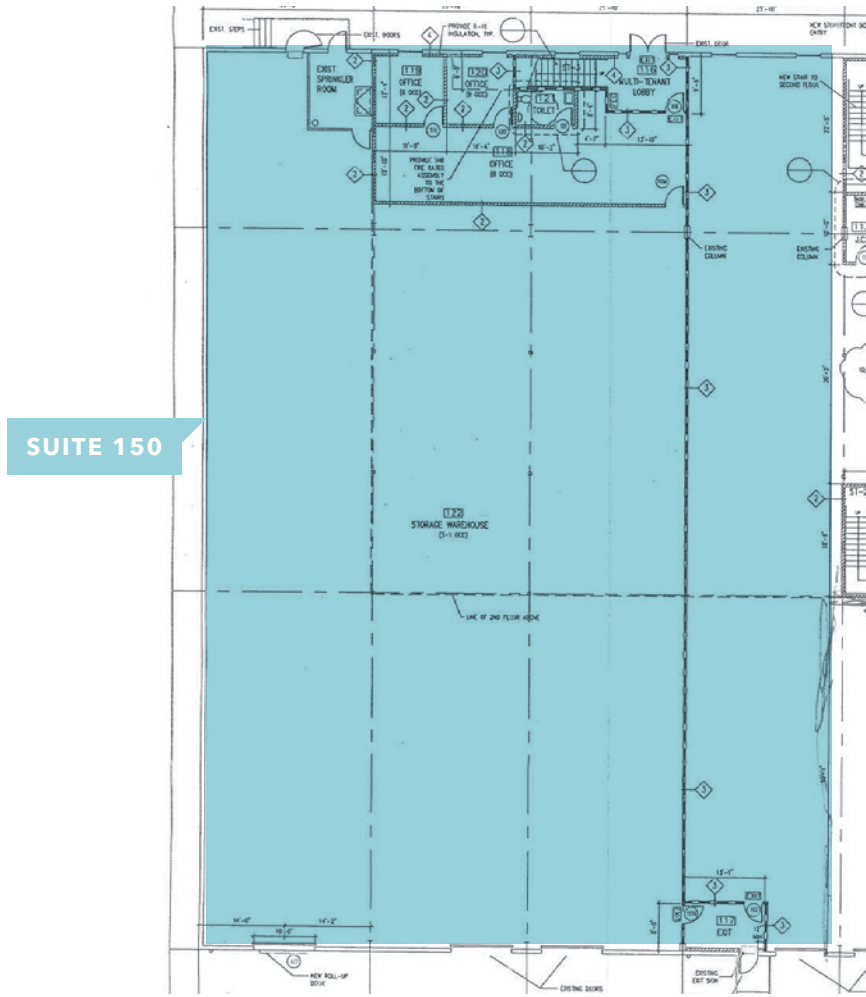


FOR LEASE

South Park Eximius

9520 TENTH AVENUE SOUTH, SUITE 150, SEATTLE, WA

First Floor



KIDDER.COM

This information supplied herein is from sources we deem reliable. It is provided without any representation, warranty, or guarantee, expressed or implied as to its accuracy. Prospective Buyer or Tenant should conduct an independent investigation and verification of all matters deemed to be material, including, but not limited to, statements of income and expenses. Consult your attorney, accountant, or other professional advisor.

