

5,500 SF
INDUSTRIAL



FOR LEASE

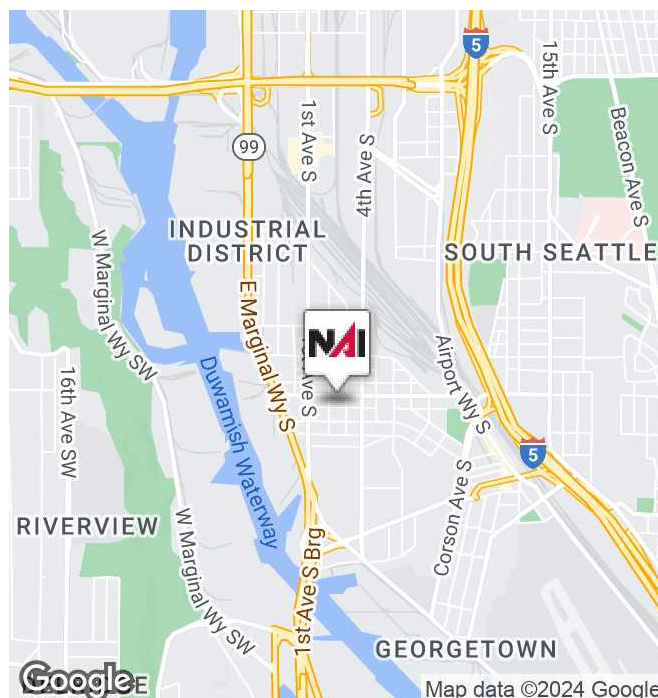


215 South Findlay Street

Seattle, Washington 98108

Property Highlights

- Total Size 5,500 SF
- Office: 960 SF
- Clear Height: 24'
- DH Doors: 1
- Lease Rate: \$1.35/SF, NNN



<https://www.nai-psp.com>

Tamir Ohayon
Partner | 425.586.5627
tohayon@nai-psp.com

Hans Swenson
Senior Vice President | 425.586.5630
hswenson@nai-psp.com

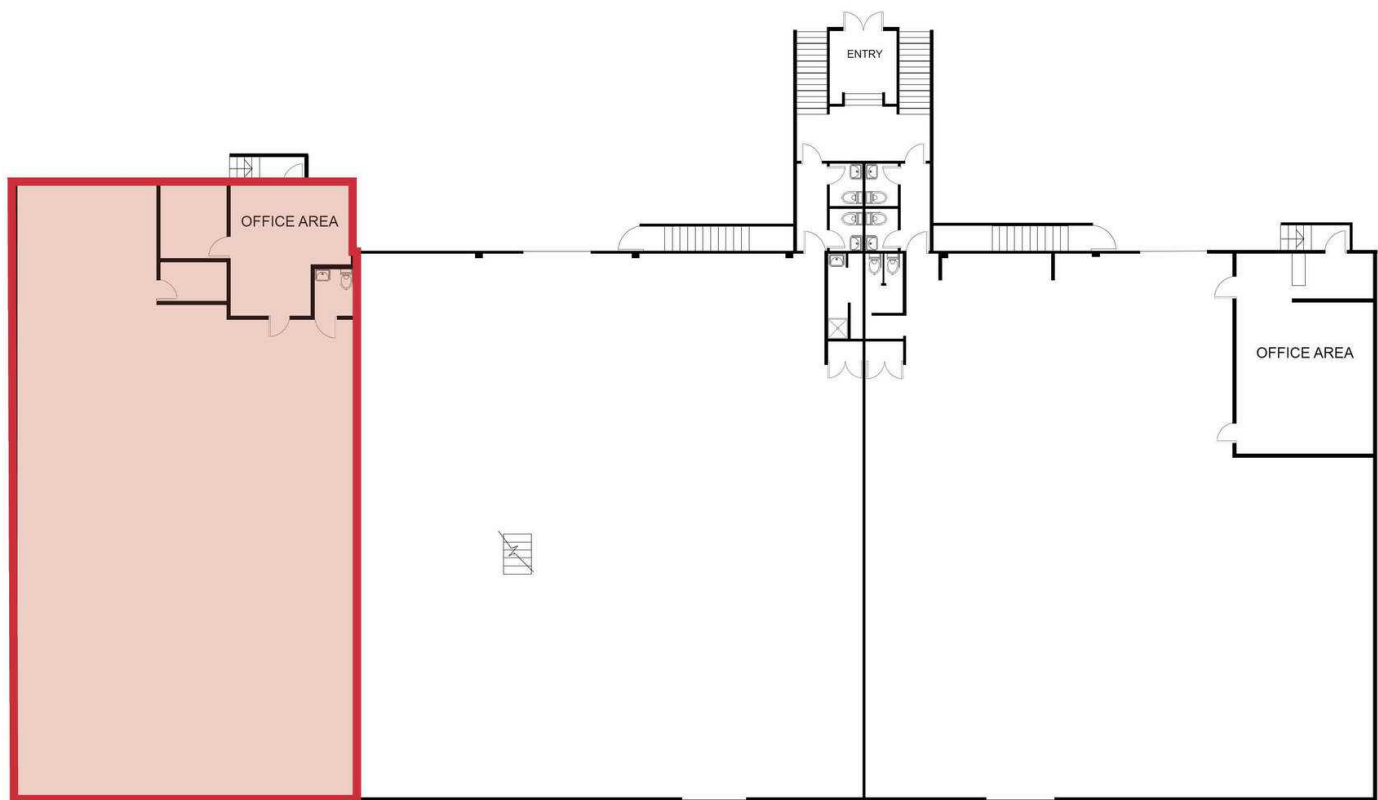
Ally Braden
Associate | 425.586.5649
abraden@nai-psp.com

NO WARRANTY, EXPRESS OR IMPLIED, IS MADE AS TO THE ACCURACY OF THE INFORMATION CONTAINED HEREIN. THIS INFORMATION IS SUBMITTED SUBJECT TO ERRORS, OMISSIONS, CHANGE OF PRICE, RENTAL OR OTHER CONDITIONS, WITHDRAWAL WITHOUT NOTICE, AND IS SUBJECT TO ANY SPECIAL LISTING CONDITIONS IMPOSED BY OUR PRINCIPALS. COOPERATING BROKERS, BUYERS, TENANTS AND OTHER PARTIES WHO RECEIVE THIS DOCUMENT SHOULD NOT RELY ON IT, BUT SHOULD USE IT AS A STARTING POINT OF ANALYSIS, AND SHOULD INDEPENDENTLY CONFIRM THE ACCURACY OF THE INFORMATION CONTAINED HEREIN THROUGH A DUE DILIGENCE REVIEW OF THE BOOKS, RECORDS, FILES AND DOCUMENTS THAT CONSTITUTE RELIABLE SOURCES OF THE INFORMATION DESCRIBED HEREIN. LOGOS ARE FOR IDENTIFICATION PURPOSES ONLY AND MAY BE TRADEMARKS OF THEIR RESPECTIVE COMPANIES.

5,500 SF
INDUSTRIAL



FOR LEASE

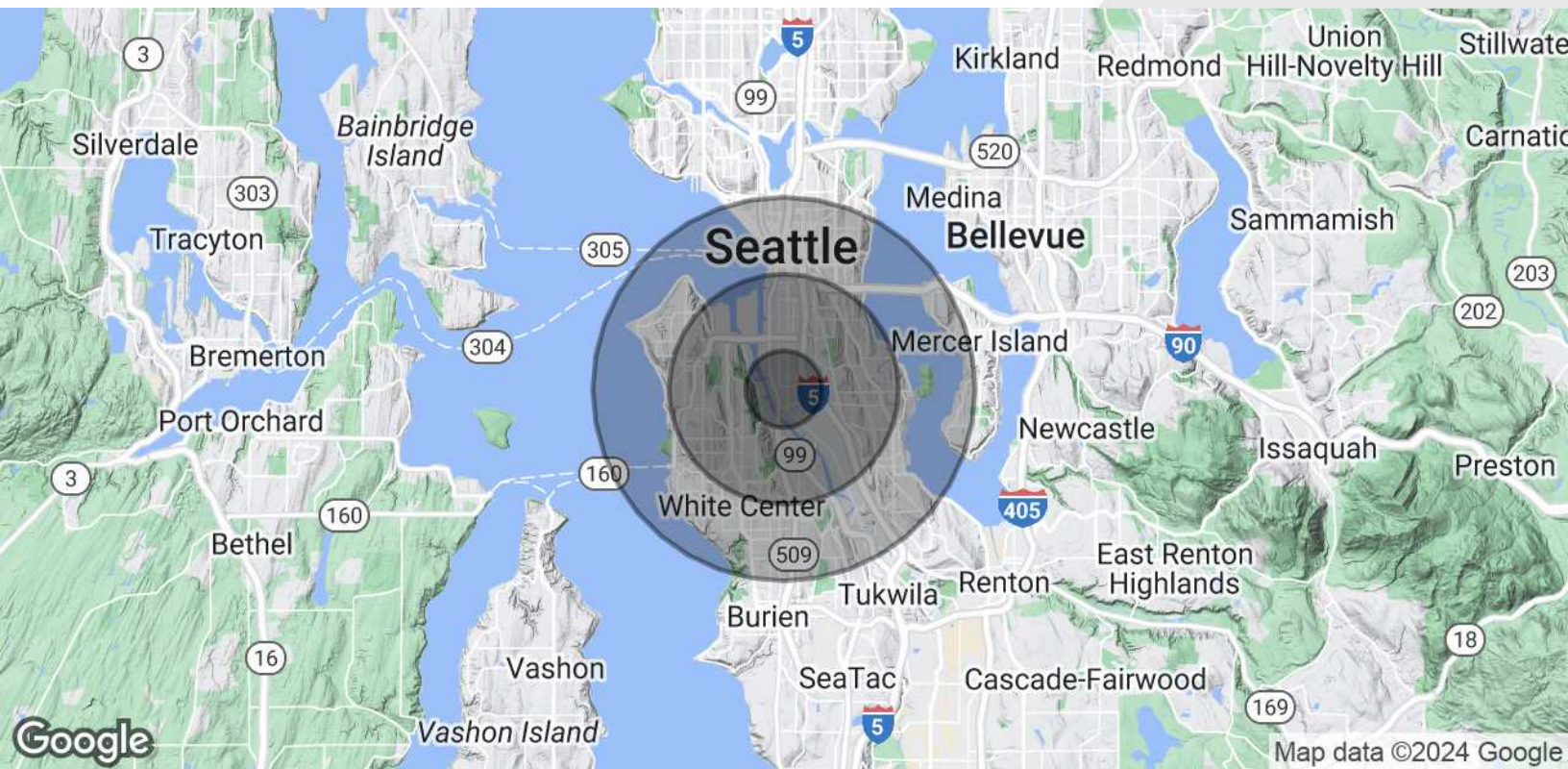


FLOOR PLAN

5,500 SF INDUSTRIAL



FOR LEASE



POPULATION	1 MILE	3 MILES	5 MILES
Total Population	3,738	148,241	386,830
Average Age	42.9	38.4	38.3
Average Age (Male)	42.1	37.2	37.4
Average Age (Female)	44.3	39.3	39.4
HOUSEHOLDS & INCOME	1 MILE	3 MILES	5 MILES
Total Households	1,684	63,791	191,866
# of Persons per HH	2.2	2.3	2.0
Average HH Income	\$100,116	\$106,231	\$114,104
Average House Value	\$547,051	\$568,190	\$564,058

* Demographic data derived from 2020 ACS - US Census