



AVAILABLE - 2.40 AC

COLUMBIA
BUILDING

AVAILABLE
229,493 SF

CHELAN
BUILDING

LEASED

63rd Ave E

TOTAL 229,493 SF / 2.40 ACRE YARD

17433 63RD AVENUE EAST, PUYALLUP, WA

THAD MALLORY, SIOR
425.362.1410
thad.mallory@nmrk.com

TAYLOR HOFF, SIOR
425.362.1388
taylor.hoff@nmrk.com

CAM WARREN
425.362.1395
cam.warren@nmrk.com

MORGAN RICHEY
425.362.1409
morgan.richey@nmrk.com

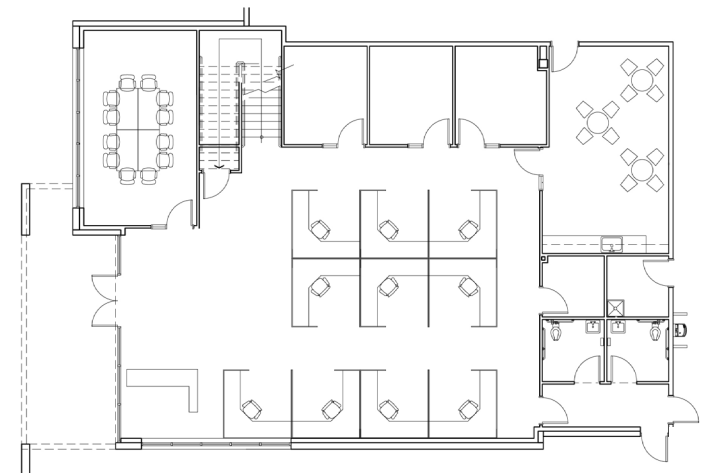


COLUMBIA BUILDING

- Lease rates: \$0.86/SF Shell, \$1.55/SF Office add-on, \$0.18/SF Yard, NNN
- Please call brokers to discuss sale terms
- 229,493 Square Feet
- 3,487 Square Feet Office
- 50 Dock High Doors, 2 Grade Level Doors
- 36' Clear Height
- 7" Reinforced Slab
- Warehouse Restrooms
- LED Warehouse Lighting - 20 FC
- 150+ Auto Parking Stalls
- 76 Trailer Parking Stalls (2.40 AC Yard)

Office Floor Plan

3,487 SF Office | 2,999 SF Mezzanine



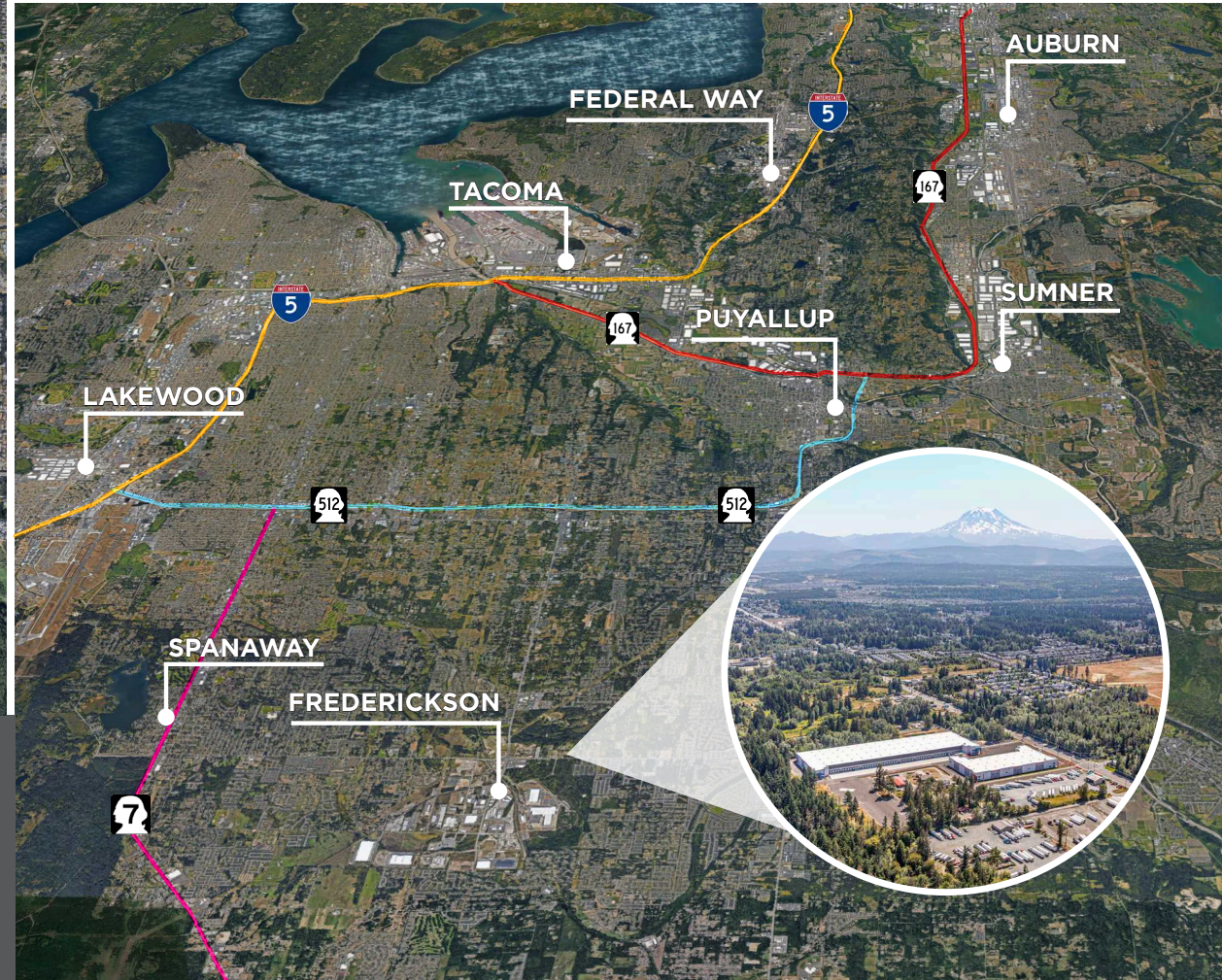


FREDERICKSON



APPROXIMATE DRIVE TIMES

SUMNER IND. DISTRICT	15 MINUTES
TACOMA	20 MINUTES
OLYMPIA	40 MINUTES
SEATAC INT'L AIRPORT	40 MINUTES
SEATTLE	60 MINUTES



The distributor of this communication is performing acts for which a real estate license is required. The information contained herein has been obtained from sources deemed reliable but has not been verified and no guarantee, warranty or representation, either express or implied, is made with respect to such information. Terms of sale or lease and availability are subject to change or withdrawal without notice.