

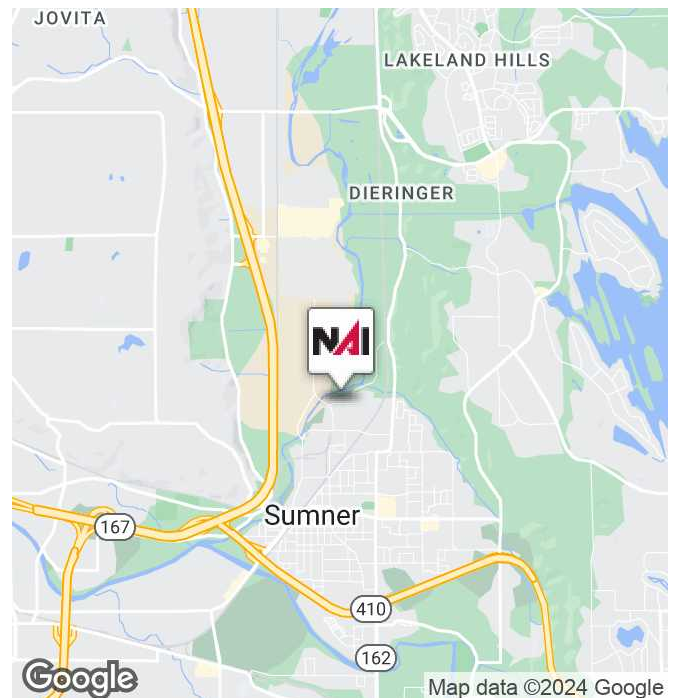


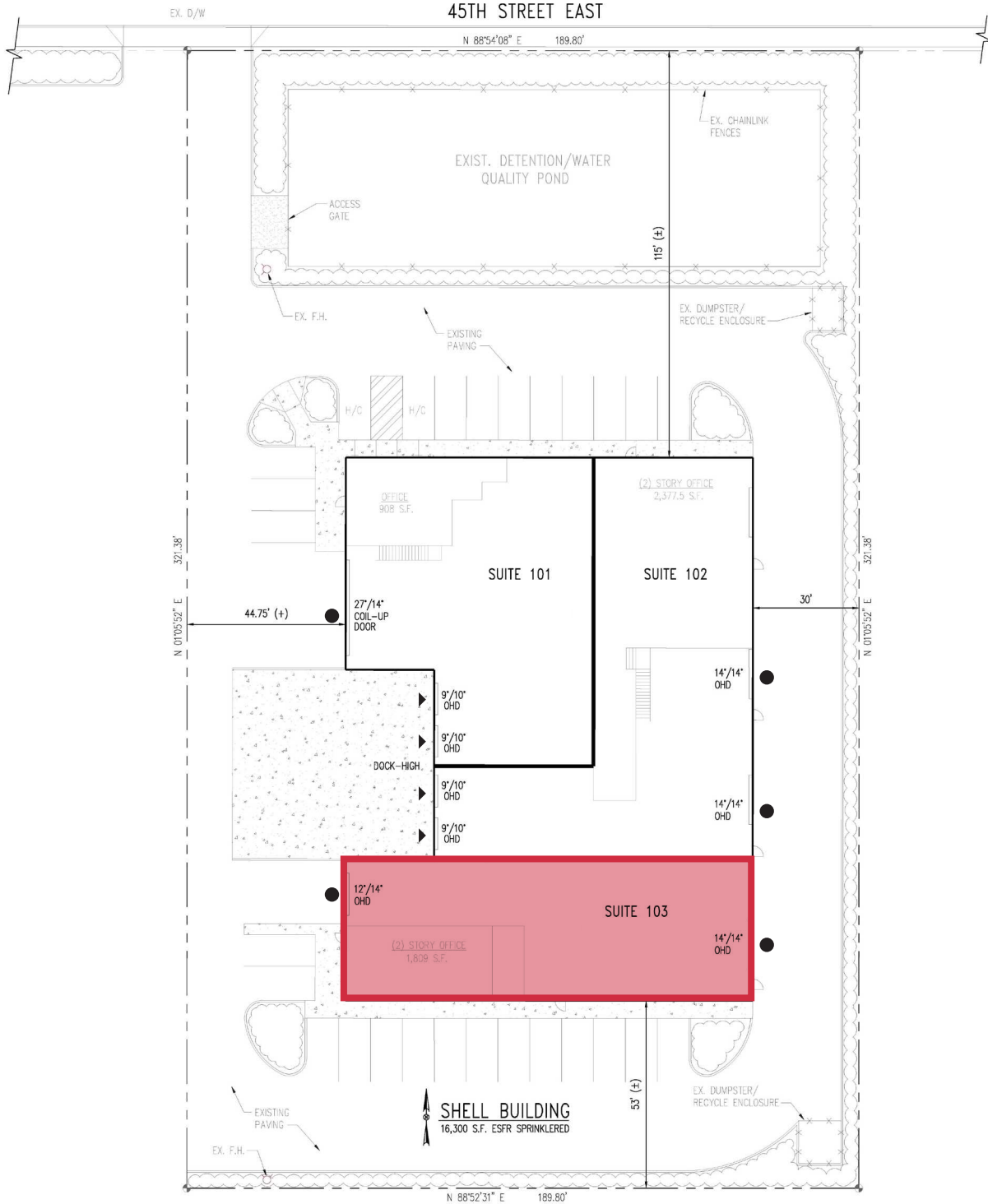
1524 Sumner Building

1524 45th Street E, Suite 103
Sumner, Washington 98390

Property Highlights

- 5,448 SF (1,809 SF office)
- 2 grade level doors (14' x 14' & 12'x14')
- 24' clear height
- Great access to SR 167
- Available July 1, 2024
- Call for rates





- Available
- Grade Level Door
- ▲ Dock High Door

Connor Powell, SIOR, CCIM Partner | 425.586.5642
cpowell@nai-psp.com

Jeff Forsberg, CCIM Principal | 425.586.5610
jforsberg@nai-psp.com

