



**SUBLEASE**

# Blackriver Corporate Office

1100 OAKESDALE AVE SW, RENTON, WA



**MIKE NEWTON**

206.248.7311

[mike.newton@kidder.com](mailto:mike.newton@kidder.com)

**SPENCER CLAPP**

206.248.7427

[spencer.clapp@kidder.com](mailto:spencer.clapp@kidder.com)

**Kidder  
Mathews**

This information supplied herein is from sources we deem reliable. It is provided without any representation, warranty, or guarantee, expressed or implied as to its accuracy. Prospective Buyer or Tenant should conduct an independent investigation and verification of all matters deemed to be material, including, but not limited to, statements of income and expenses. Consult your attorney, accountant, or other professional advisor.

**KIDDER.COM**



FOR SUBLEASE

# Blackriver Corporate Office

1100 OAKESDALE AVE SW, RENTON, WA

19,769 RSF  
office/lab  
space

**PROMINENT** location

**GREAT** access to I-5  
and I-405

**LONG-TERM** lease in place,  
expires 3/31/2030

**QUALITY** office/lab

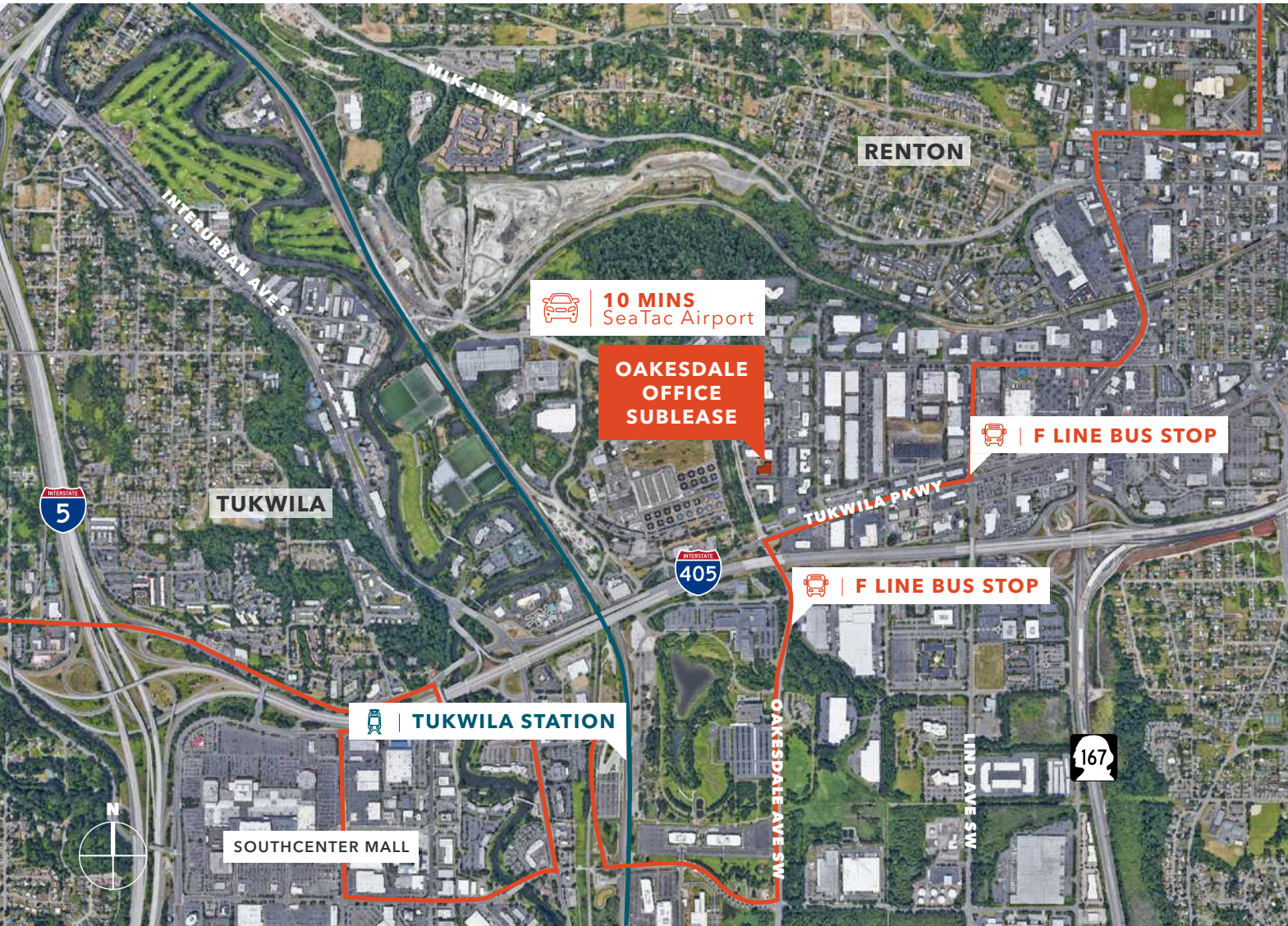
**ONE** GL door to access  
warehouse/lab

**ABUNDANT** parking with 85  
stalls

**NUMEROUS** amenities  
including fitness center and  
conference rooms

**MIKE NEWTON**  
206.248.7311  
[mike.newton@kidder.com](mailto:mike.newton@kidder.com)

**SPENCER CLAPP**  
206.248.7427  
[spencer.clapp@kidder.com](mailto:spencer.clapp@kidder.com)



KIDDER.COM

This information supplied herein is from sources we deem reliable. It is provided without any representation, warranty, or guarantee, expressed or implied as to its accuracy. Prospective Buyer or Tenant should conduct an independent investigation and verification of all matters deemed to be material, including, but not limited to, statements of income and expenses. Consult your attorney, accountant, or other professional advisor.

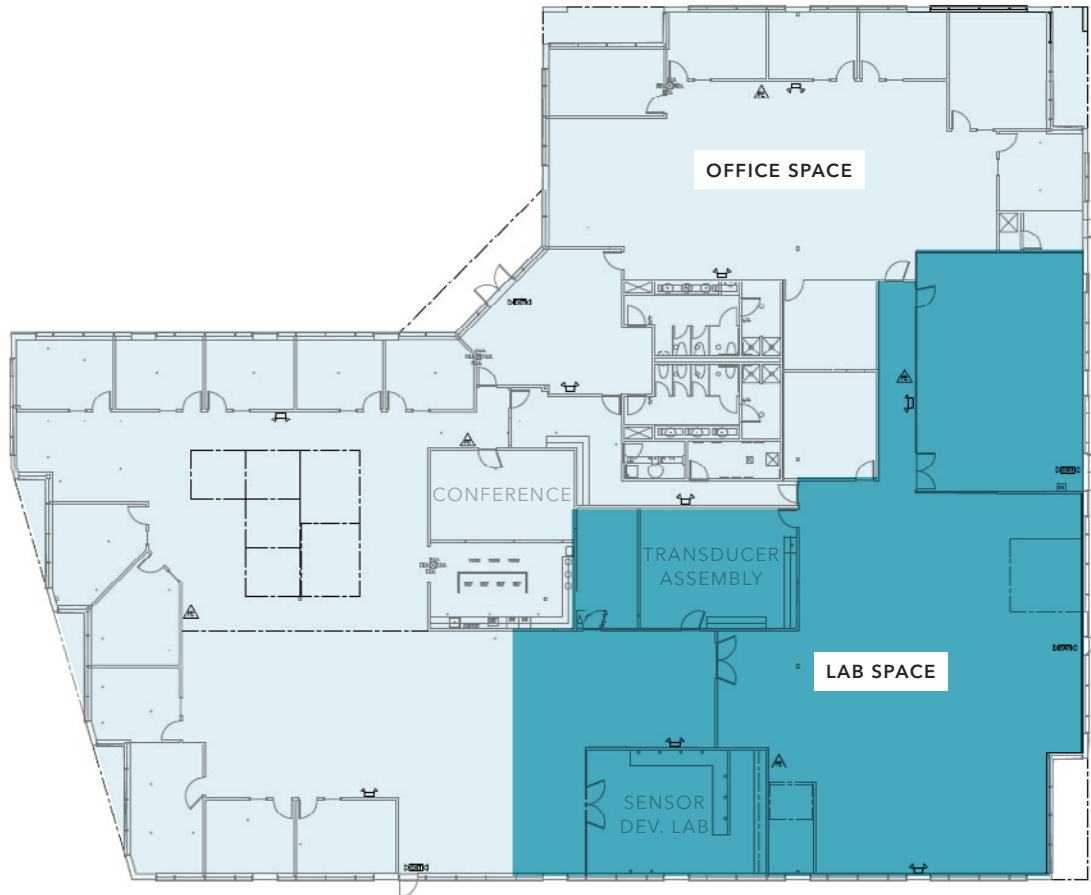
**km** Kidder  
Mathews

FOR SUBLEASE

# Blackriver Corporate Office

1100 OAKESDALE AVE SW, RENTON, WA

## Tenant Floor Plan



**19,769**

RENTABLE SQUARE FEET

**±12,453**

OFFICE SQUARE FEET

**±7,316**

LAB SQUARE FEET

**CALL**

AGENTS FOR RATES

**MIKE NEWTON**

206.248.7311

[mike.newton@kidder.com](mailto:mike.newton@kidder.com)

**SPENCER CLAPP**

206.248.7427

[spencer.clapp@kidder.com](mailto:spencer.clapp@kidder.com)

KIDDER.COM

This information supplied herein is from sources we deem reliable. It is provided without any representation, warranty, or guarantee, expressed or implied as to its accuracy. Prospective Buyer or Tenant should conduct an independent investigation and verification of all matters deemed to be material, including, but not limited to, statements of income and expenses. Consult your attorney, accountant, or other professional advisor.

**km** Kidder Mathews



FOR SUBLEASE

# Blackriver Corporate Office

1100 OAKESDALE AVE SW, RENTON, WA

## Amenities



KIDDER.COM

This information supplied herein is from sources we deem reliable. It is provided without any representation, warranty, or guarantee, expressed or implied as to its accuracy. Prospective Buyer or Tenant should conduct an independent investigation and verification of all matters deemed to be material, including, but not limited to, statements of income and expenses. Consult your attorney, accountant, or other professional advisor.

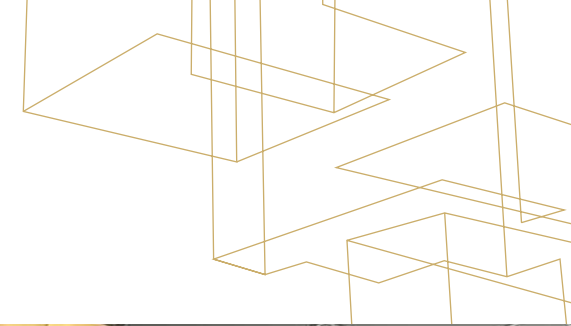
**km** Kidder Mathews



FOR SUBLEASE

# Blackriver Corporate Office

1100 OAKESDALE AVE SW, RENTON, WA



[KIDDER.COM](http://KIDDER.COM)

This information supplied herein is from sources we deem reliable. It is provided without any representation, warranty, or guarantee, expressed or implied as to its accuracy. Prospective Buyer or Tenant should conduct an independent investigation and verification of all matters deemed to be material, including, but not limited to, statements of income and expenses. Consult your attorney, accountant, or other professional advisor.

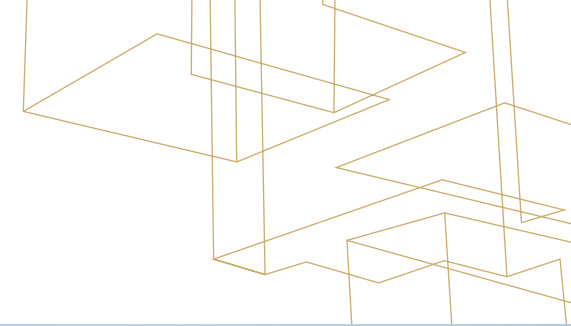




FOR SUBLEASE

# Blackriver Corporate Office

1100 OAKESDALE AVE SW, RENTON, WA



[KIDDER.COM](http://KIDDER.COM)

This information supplied herein is from sources we deem reliable. It is provided without any representation, warranty, or guarantee, expressed or implied as to its accuracy. Prospective Buyer or Tenant should conduct an independent investigation and verification of all matters deemed to be material, including, but not limited to, statements of income and expenses. Consult your attorney, accountant, or other professional advisor.

 **Kidder  
Mathews**