

**OFFICE LEASE
AVAILABLE**



MEADOW CREEK OFFICE PARK

22500 - 22619 SE 64th Place | Issaquah, WA

Brian Stewart

425.289.2222

brians@rosenharbottle.com

425.454.3030
rosenharbottle.com

PO Box 5003
Bellevue, WA 98009 - 5003





ISSAQUAH CLASS A OFFICE SPACES AVAILABLE

750 SF - 1,852 SF Available

OFFICE PARK DETAILS:

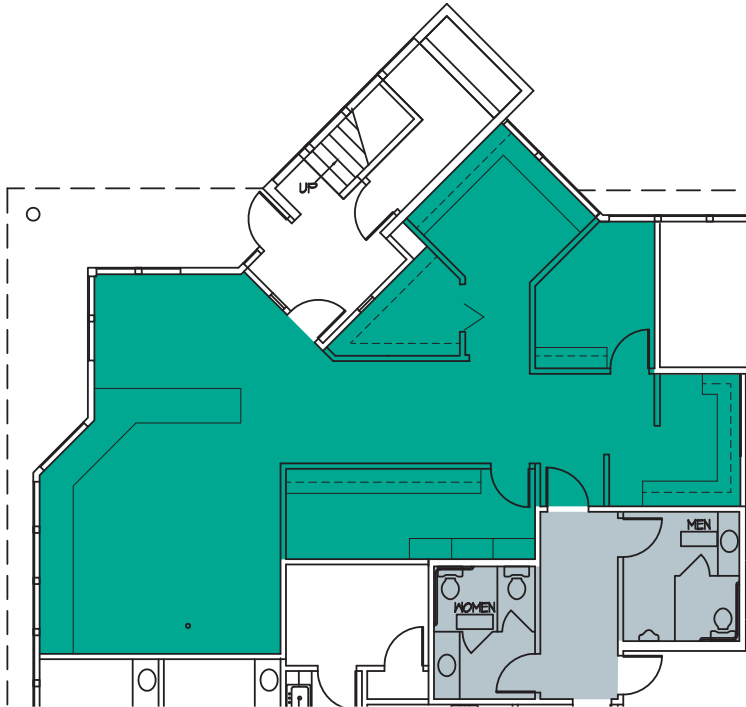
- Minutes from Costco Headquarters
- Amazing Location off I-90 at Front St/E Lake Sammamish Pkwy
- Nearby Amenities Include Retailers, Grocers, Restaurants, Hospital & Parks
- Park-Like, Campus Setting with Free Surface Parking

The information provided herein has been obtained from sources believed to be reliable, but no representation or warranty, express or implied, is made with respect to the accuracy or completeness of any such information. Each prospective buyer or tenant should independently investigate, evaluate and verify all information provided herein and any other matters deemed material. Please consult your attorney, tax advisor or other professional advisor. The terms of sale or lease set forth herein are subject to change or withdrawal at any time and without notice.

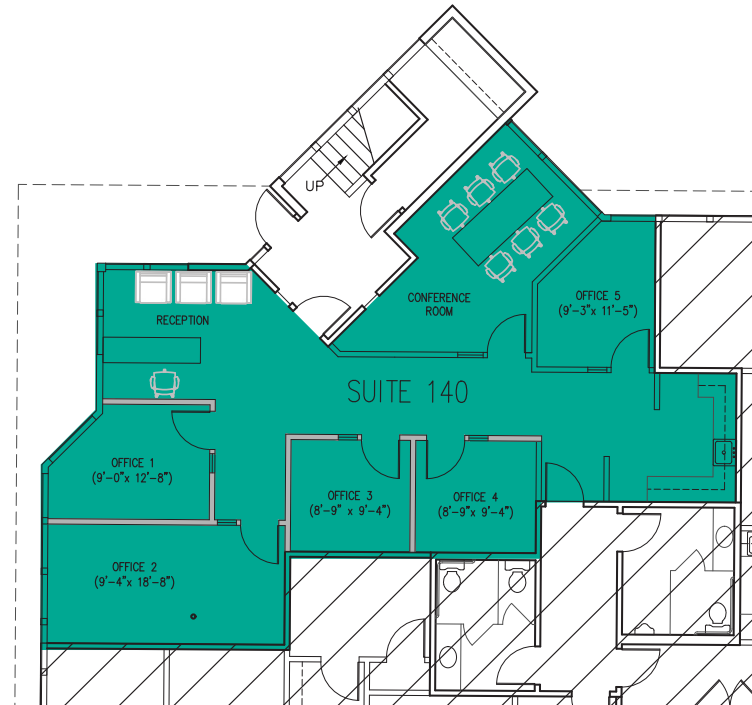
BUILDING D (22526)

FIRST LEVEL FLOOR PLAN

| Suite | Square Feet | Rate | Notes |
|---------------------|-------------|-----------------|---|
| D-140 (As-Is Plan) | 1,440 SF | \$28.00/SF, NNN | First floor office with 1 private room, reception area, break room, and open work space. Available Now. |
| D-140 (Sample Plan) | 1,440 SF | \$28.00/SF, NNN | First floor office with 5 private offices, 1 conference room, reception area, and break area with a kitchenette. |



Suite D-140
1,440 SF
As-Is Floor Plan



Suite D-140
1,440 SF
Sample Floor Plan

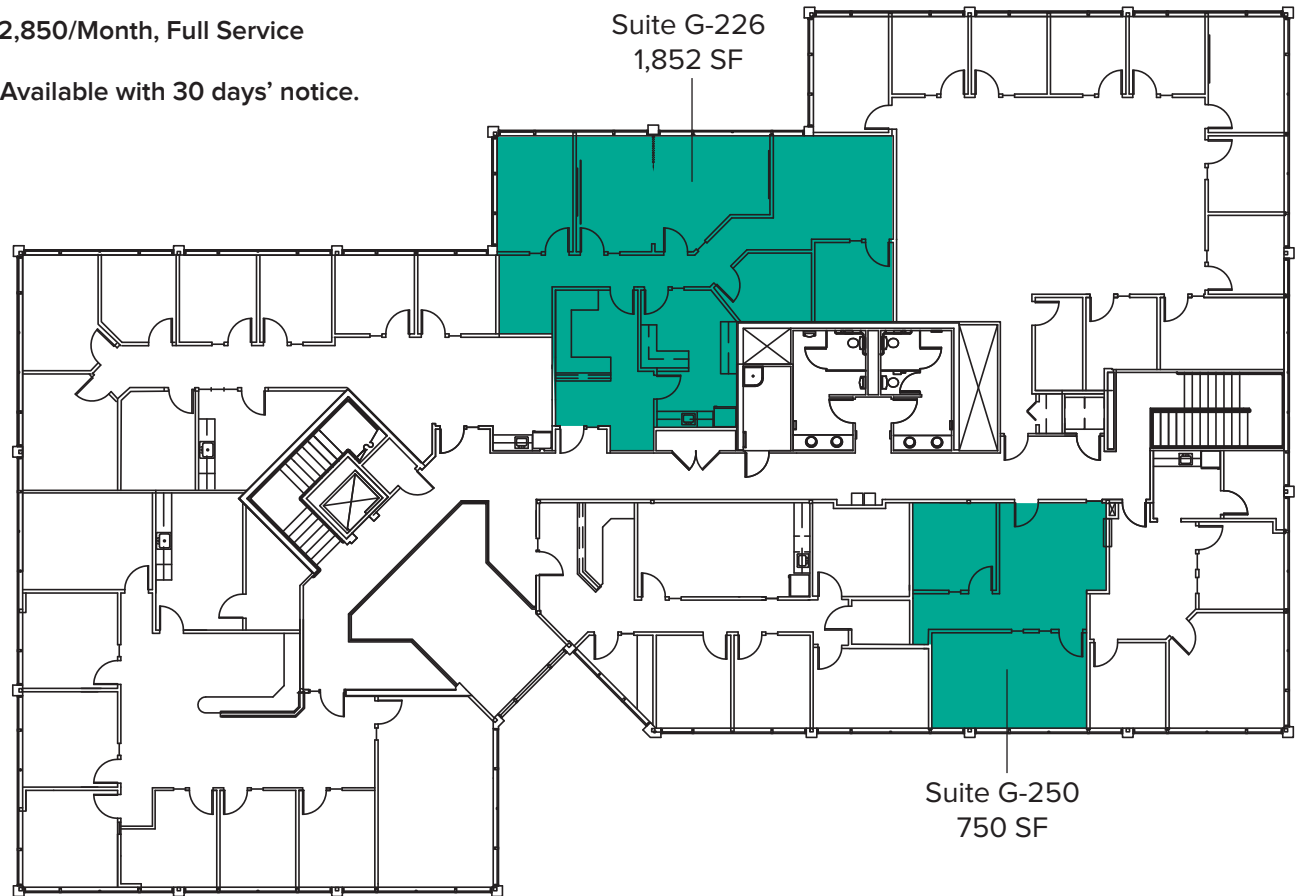
BUILDING G (22500) SECOND LEVEL FLOOR PLAN

| Suite | Square Feet | Rate |
|-------|-------------|-----------------|
| G-226 | 1,852 SF | \$29.00/SF, NNN |

Second floor office with reception area, 3 private offices, conference room, open work area, and break room with a kitchenette. **Available Now.**

| | | |
|-------|--------|-----------------------------|
| G-250 | 750 SF | \$2,850/Month, Full Service |
|-------|--------|-----------------------------|

Second floor office with private offices and reception area. **Available with 30 days' notice.**

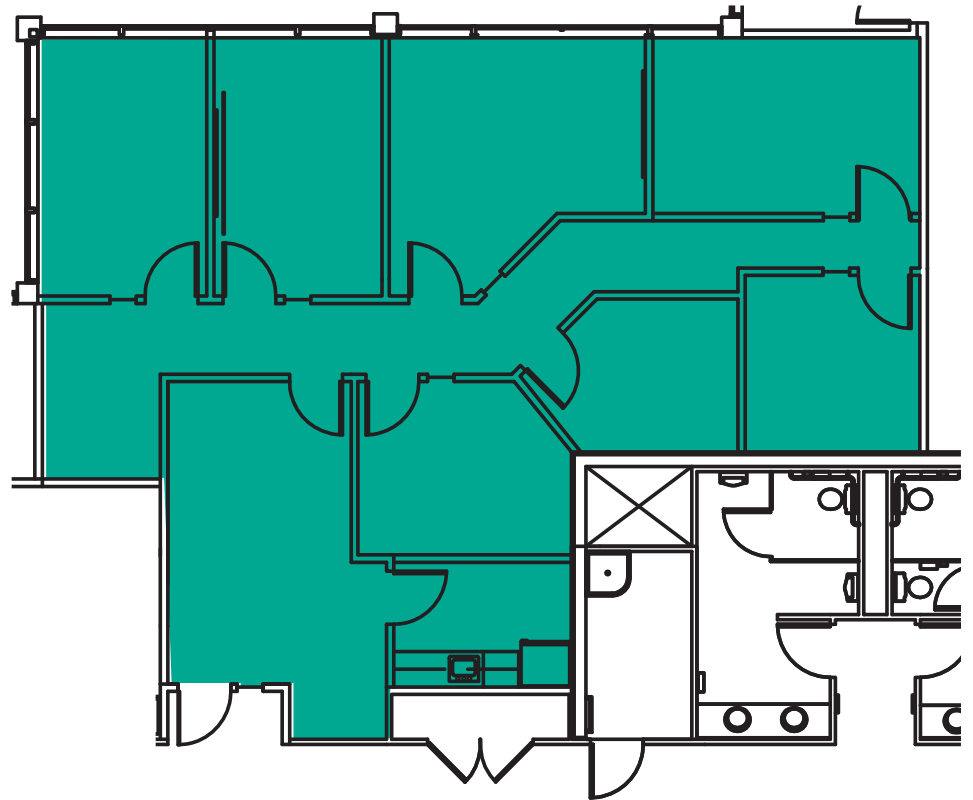


The information provided herein has been obtained from sources believed to be reliable, but no representation or warranty, express or implied, is made with respect to the accuracy or completeness of any such information. Each prospective buyer or tenant should independently investigate, evaluate and verify all information provided herein and any other matters deemed material. Please consult your attorney, tax advisor or other professional advisor. The terms of sale or lease set forth herein are subject to change or withdrawal at any time and without notice.

SUITE G-226 SAMPLE FLOOR PLAN

SUITE FEATURES

- **1,852 SF**
- **\$29.00/SF, NNN**
- Second floor office space
- Reception area
- 7 Private Offices
- Break room with kitchenette



SITE PLAN



LOCATION MAP

