

FOR LEASE

WESTSOUND PLAZA

9960 Silverdale Way NW Silverdale, WA 98383



OFFERING SUMMARY

Lease Rate:	\$1,000 - \$2,500 per month (MG)
Available SF:	1,000 - 1,500 SF
Lot Size:	1.52 Acres
Year Built:	1982
Zoning:	RC

PROPERTY OVERVIEW

Available for lease: Units 13, 14, 15 at Westsound Plaza. These are modified gross lease spaces located on Silverdale Way, between Kitsap Mall Blvd. NW and Poplars Ave NW. The location is convenient, near Silverdale Mall and at the entrance to Silverdale Plaza, suitable for businesses seeking a presence in a community shopping area with good commuting access.

Units 13 and 14 are office style with open space in the back. If garage space is paired with Unit 14 and 13 then the garage space will be \$500 monthly to a total of \$5,500/month

Unit 15 has a grade level garage door.

SPACES	USES	LEASE RATE	SPACE SIZE
Suite 13	Retail/Office	\$2,500 per month	1,500 SF
Suite 14	Retail/Office	\$2,500 per month	1,500 SF
Suite 15	Garage, Grade Level	\$1,000 per month	1,000 SF

Josh Strok
425 949 6897
joshdstrok@gmail.com

Cameron Wilson, CCIM
702 604 4119
cameron.wilson@cbcworldwide.com



**COLDWELL BANKER
COMMERCIAL**
DANFORTH

FOR LEASE

WESTSOUND PLAZA

9960 Silverdale Way NW Silverdale, WA 98383



Josh Strok
425 949 6897
joshdstrok@gmail.com

Cameron Wilson, CCIM
702 604 4119
cameron.wilson@cbcworldwide.com

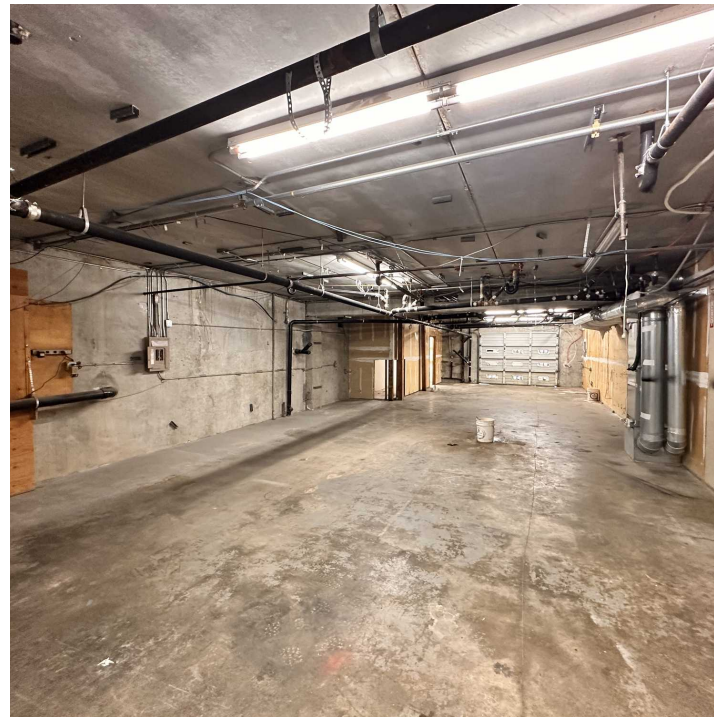
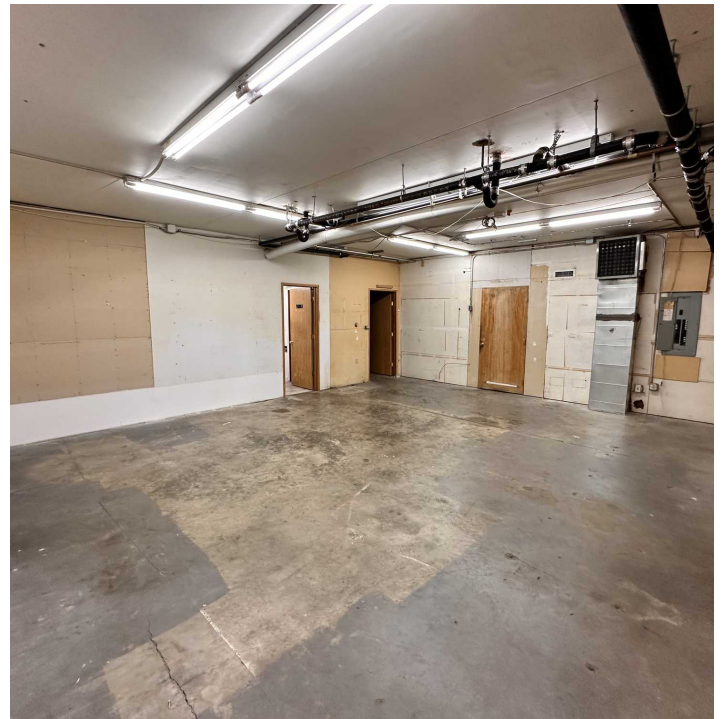


**COLDWELL BANKER
COMMERCIAL**
DANFORTH

FOR LEASE

WESTSOUND PLAZA

9960 Silverdale Way NW Silverdale, WA 98383



Josh Strok
425 949 6897
joshdstrok@gmail.com

Cameron Wilson, CCIM
702 604 4119
cameron.wilson@cbcworldwide.com

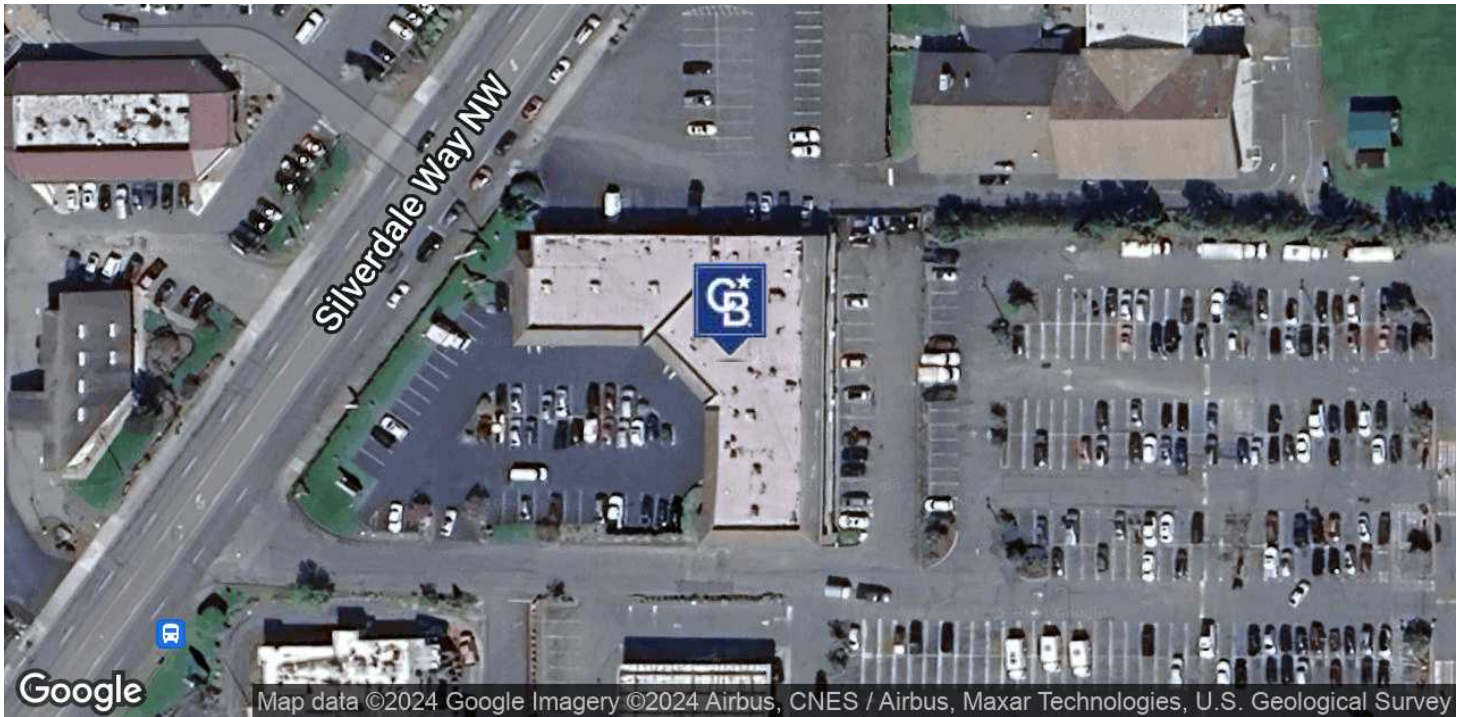
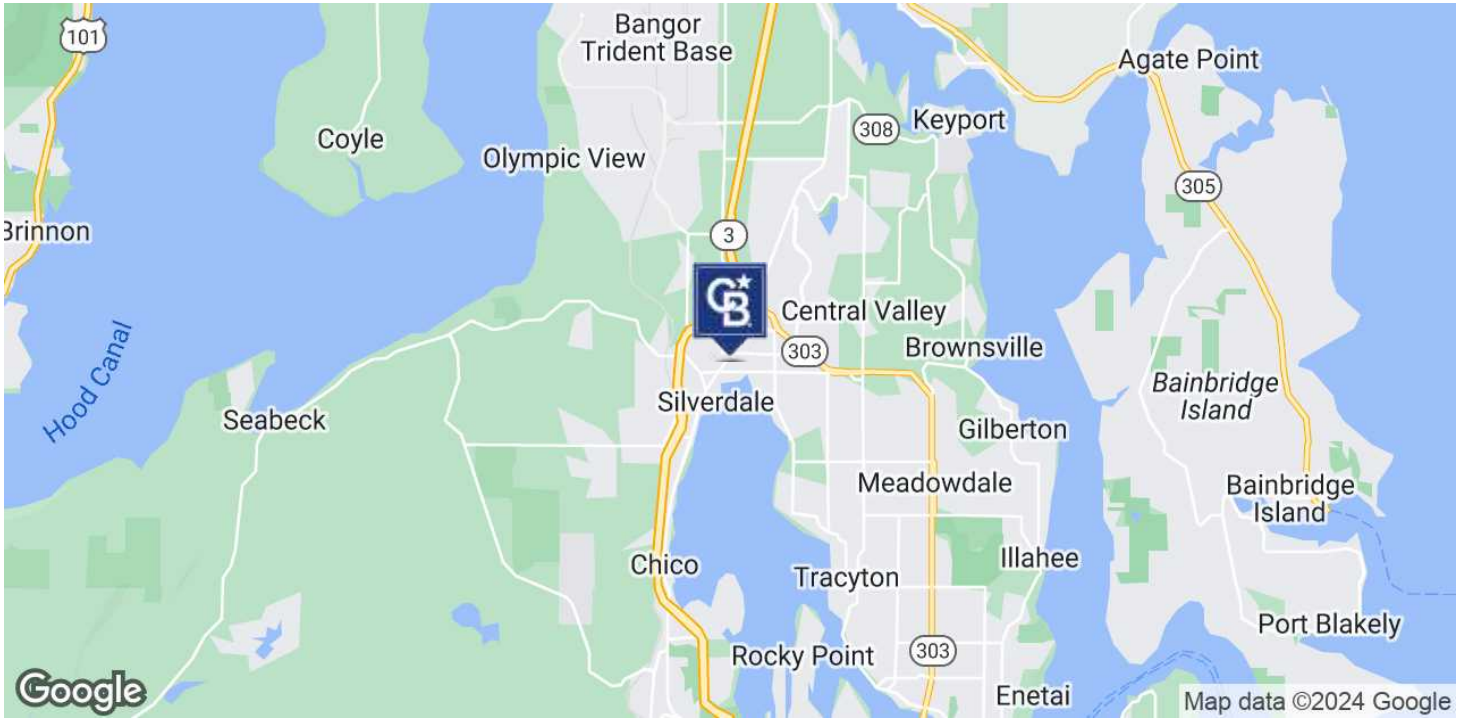


**COLDWELL BANKER
COMMERCIAL**
DANFORTH

FOR LEASE

WESTSOUND PLAZA

9960 Silverdale Way NW Silverdale, WA 98383



Josh Strok
425 949 6897
joshdstrok@gmail.com

Cameron Wilson, CCIM
702 604 4119
cameron.wilson@cbcworldwide.com



**COLDWELL BANKER
COMMERCIAL**
DANFORTH