

# NORTHWARD BUSINESS PARK

BUILDING E | 19204 68TH AVENUE SOUTH | KENT, WA

FOR LEASE 51,102 SF

## CLASS A OFFICE/WAREHOUSE IN NORTH KENT VALLEY



### LEASE INFORMATION

<b>Available Size:</b>	51,102 SF
<b>Office Size:</b>	7,464 SF
<b>Lease Rate:</b>	Call for rates
<b>Loading:</b>	9 DH 3 GL (12' x 16') 1 ramp
<b>Clear Height:</b>	24'
<b>Available:</b>	Now

### PROPERTY HIGHLIGHTS

- 22' x 54' column spacing
- 8 pit levelers; 12' x 16' oversized GL doors
- Unit fronts West Valley Hwy for great visibility
- Excellent access to freeways
- Zoned M-1, City of Kent
- High identity corporate image
- Fenced rear loading area



**KERMIT JORGENSEN**  
206.787.1475  
kjorgensen@neilwalter.com

**JOHN BLEDSOE**  
206.787.1460  
jbledsoe@neilwalter.com

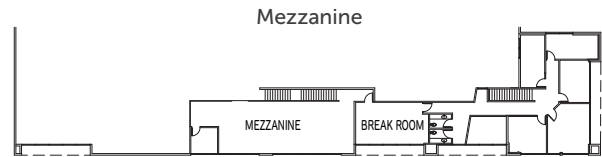
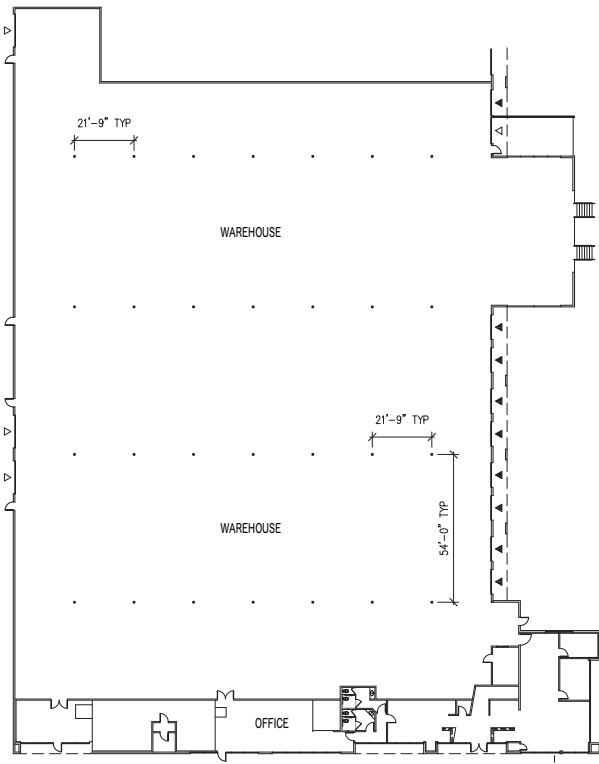
All information references in this document are approximate. The information contained herein is contained from sources deemed reliable. It is provided without representation, warranty, or guarantee, expressed or implied as to accuracy. Prospective buyer or tenant should conduct its own independent investigation relating to the property, government codes and regulations, allowed uses, and all other matters, regardless of whether they are referred to or contained in this document.

# NORTHWARD BUSINESS PARK

BUILDING E | 19204 68TH AVENUE SOUTH | KENT, WA

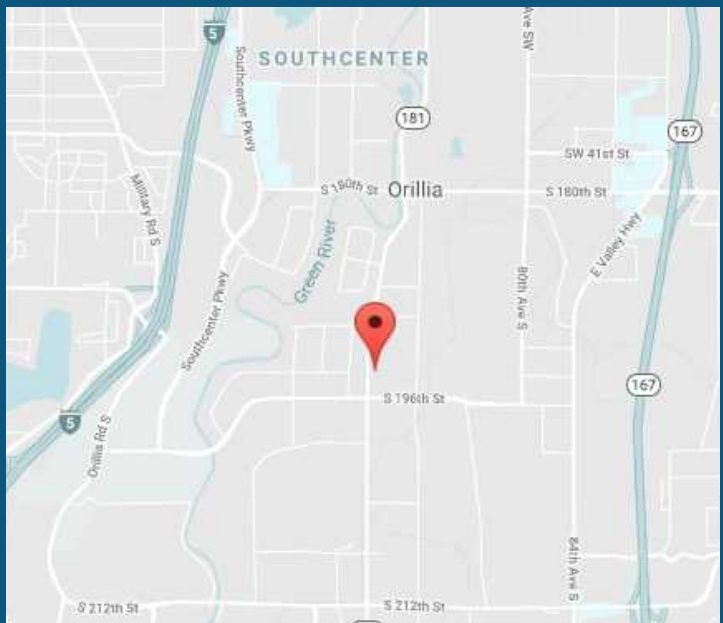
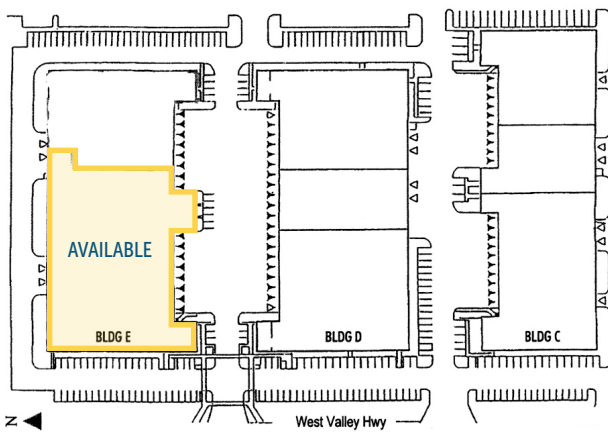


## FLOOR PLAN



## SITE PLAN

△ Grade-level Doors ▲ Dock-high Doors



**KERMIT JORGENSEN**  
206.787.1475  
kjorgensen@neilwalter.com

**JOHN BLEDSOE**  
206.787.1460  
jbledsoe@neilwalter.com

All information references in this document are approximate. The information contained herein is contained from sources deemed reliable. It is provided without representation, warranty, or guarantee, expressed or implied as to accuracy. Prospective buyer or tenant should conduct its own independent investigation relating to the property, government codes and regulations, allowed uses, and all other matters, regardless of whether they are referred to or contained in this document.