

FOR SALE & LEASE

23940 State Route 3
Belfair, WA 98528



BELFAIR FORMER RITE AID

Justin Holmes | Josh Parnell

First Western Properties—Tacoma Inc. | 253.472.0404
6402 Tacoma Mall Blvd, Tacoma, WA 98409 | fwp-inc.com

FOR SALE & LEASE

23940 STATE ROUTE 3



FORMER RITE AID : 17,350 SF

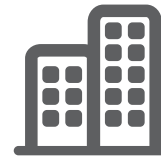
- Free standing building with drive-thru
- Located on a lighted intersection off SR 3
- 63 Parking Stalls with easy ingress/ egress
- Located across from Safeway
- Surrounded by established neighborhoods with growing population



Population



Average HH Income



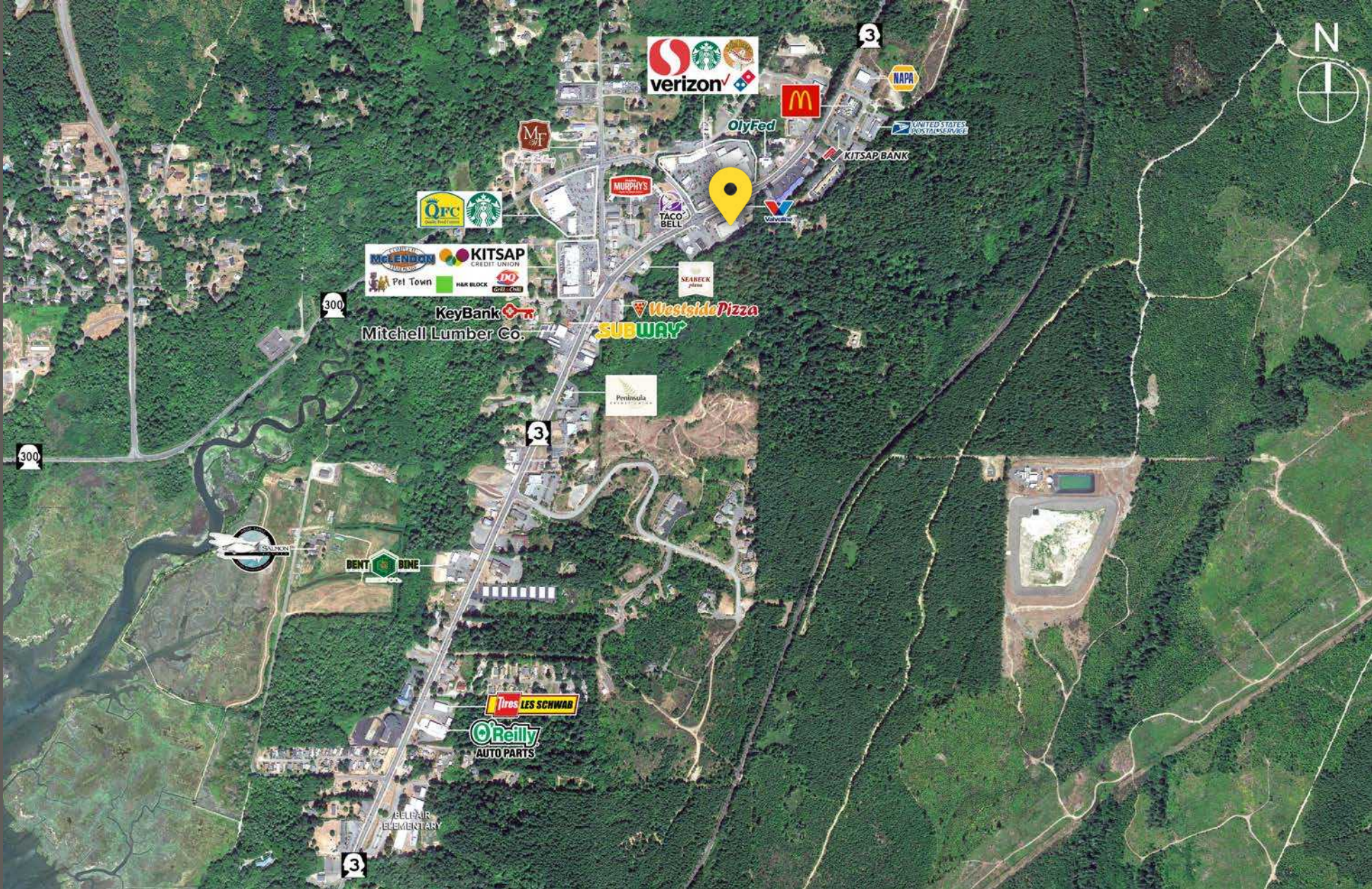
Daytime Population

Regis - 2024

	Population	Average HH Income	Daytime Population
Mile 5	11,842	\$139,154	2,589
Mile 10	70,786	\$122,341	10,763
Mile 15	243,794	\$130,632	52,636

SUMMARY

LOCATION DETAILS



Strategically Positioned
in Belfair's Retail Core



Located 12 minutes
from SR 16



19,879 ADT
State Route 3

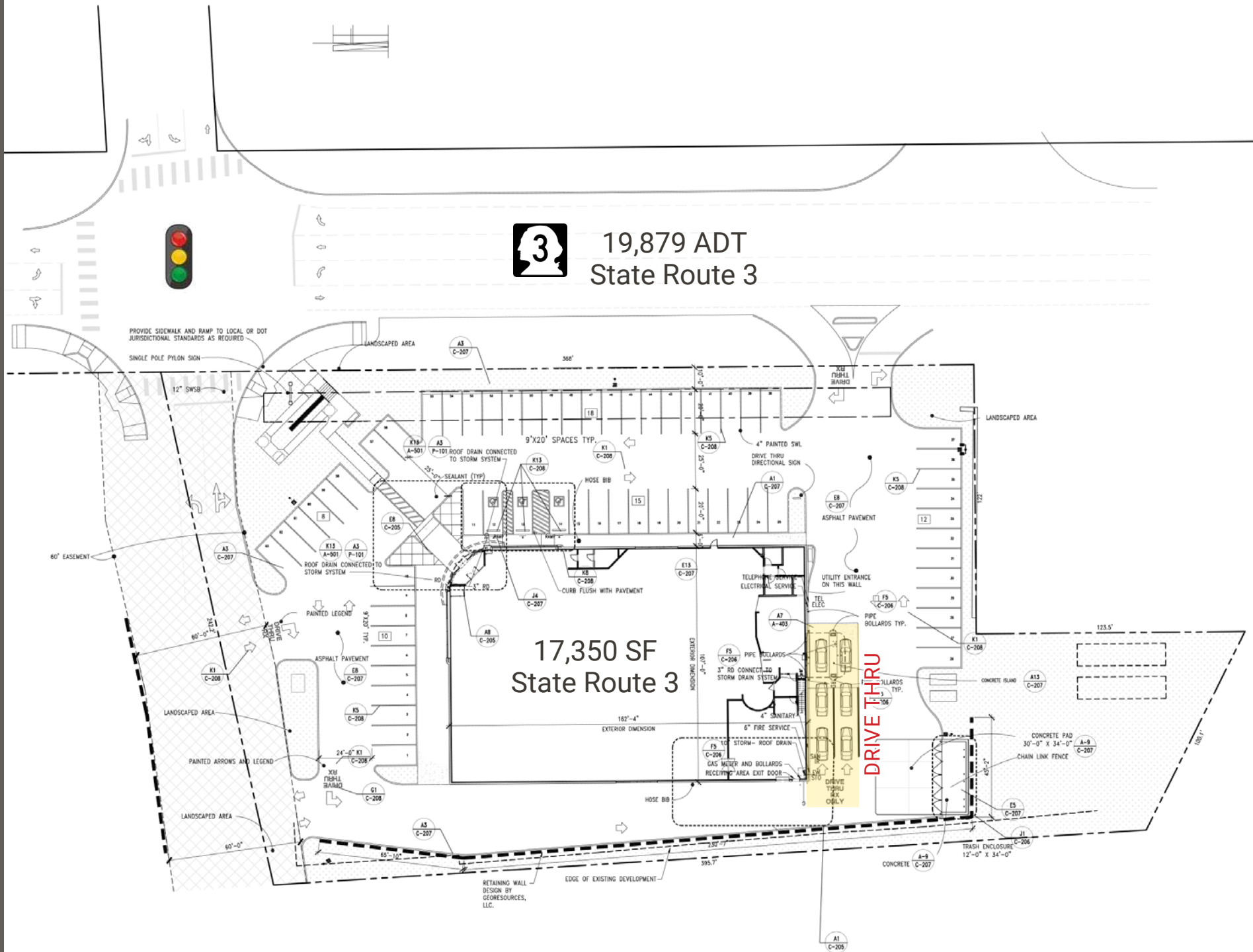


8,212 ADT
NE Clifton Lane

SITE PLAN



19,879 ADT
State Route 3





BELFAIR, WA offers a unique blend of small-town charm and outdoor adventure. Located 30 miles northwest of Tacoma, this community offers residents and visitors city amenities in a rural setting. Belfair has a diverse economy that focuses on retail, healthcare and construction with a growing presence of professional and technical services

TACOMA | KIRKLAND | SEATTLE | PORTLAND



RELATIONSHIP FOCUSED. RESULTS DRIVEN.

JUSTIN HOLMES

253.447.2282
justin@firstwesternproperties.com

JOSH PARNELL

253.284.3630
josh@firstwesternproperties.com



First Western Properties—Tacoma Inc. | 253.472.0404
6402 Tacoma Mall Blvd, Tacoma, WA 98409 | fwp-inc.com

© First Western Properties, Inc. DISCLAIMER: The above information has been secured from sources believed to be reliable, however, no representations are made to its accuracy. Prospective tenants or buyers should consult their professional advisors and conduct their own independent investigation. Properties are subject to change in price and/or availability without notice.