

FOR LEASE

TIME SQUARE

Time Square offers companies a Class A suburban office campus environment

500-800 SW 39TH STREET | RENTON, WA 98057

 VIEW PROPERTY VIDEO

RENTONOFFICEPARK.COM | KIDDER.COM

 Kidder
Mathews



PROPERTY HIGHLIGHTS

Lobbies recently updated with new finishes, furniture, and artwork

Outstanding freeway access to I-405, SR-167, and minutes from I-5

Convenient location puts you 10 minutes from SeaTac Airport and 20 minutes from downtown Bellevue and Seattle

A parking ratio of over 4/1,000 SF to accommodate all of your parking needs

ON-SITE AMENITIES INCLUDE:

Fitness center with locker rooms, showers, and the latest equipment

Conference center with the capacity for 50 people and state-of-the-art audio visual capabilities

Restaurant-quality dining in the cafe with both indoor and outdoor seating, as well as catering capabilities to accommodate in-office functions

AVAILABILITIES

Building	Suite	Size	Floor	Available	Notes
600	100C	4,565	1		Plug & play (all furniture available)
600	200	10,460	2	9/1/2024	
600	250	7,272	2		
660	245	3,104	2		Abundant glass-line, quality build-out
660	215 / 225 / 245	11,143	2		Abundant glass-line, quality build-out
660	215	5,195	2		Plug & play (all furniture available) (can combine suite 215 & 225 for 8,039 SF)
660	225	2,844	2		Abundant glass-line, quality build-out
700	100/110	46,952	1	6/1/2024	Can deliver entire floor
700	1st & 2nd	95,992	1 & 2	6/1/2024	Can deliver entire building
700	2nd	49,040	2		Can deliver entire floor (divisible to approximately 3,000 RSF) CLICK FOR VIRTUAL TOUR
800	2nd	30,977	2	6/1/2023	Can deliver entire floor (divisible to approximately 6,600 RSF)

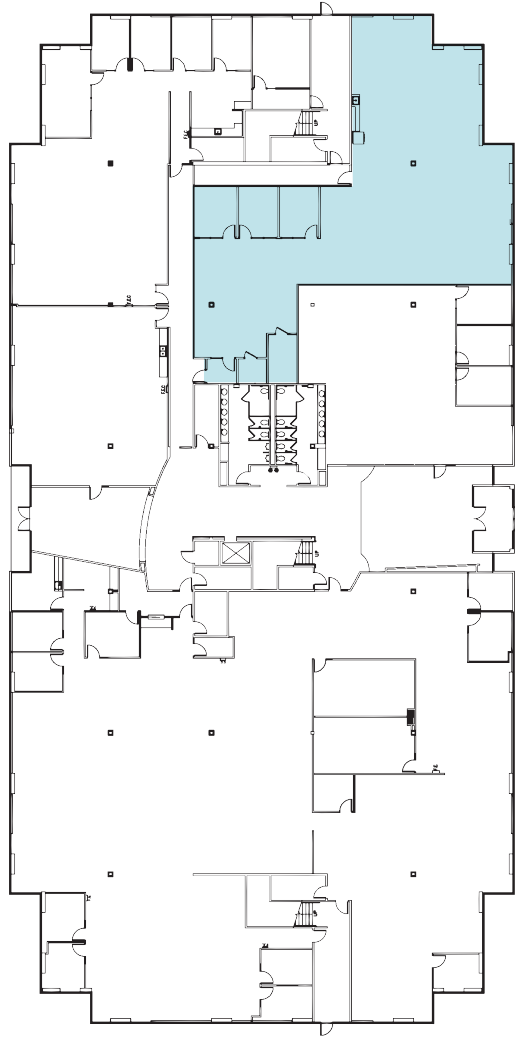
FOR LEASE

BUILDING 600 | 1ST FLOOR

SUITE 100C

4,565

RENTABLE SF
(PLUG & PLAY)



RENTONOFFICEPARK.COM | KIDDER.COM

This information supplied herein is from sources we deem reliable. It is provided without any representation, warranty, or guarantee, expressed or implied as to its accuracy. Prospective Buyer or Tenant should conduct an independent investigation and verification of all matters deemed to be material, including, but not limited to, statements of income and expenses. Consult your attorney, accountant, or other professional advisor.



FOR LEASE

BUILDING 600 | 2ND FLOOR

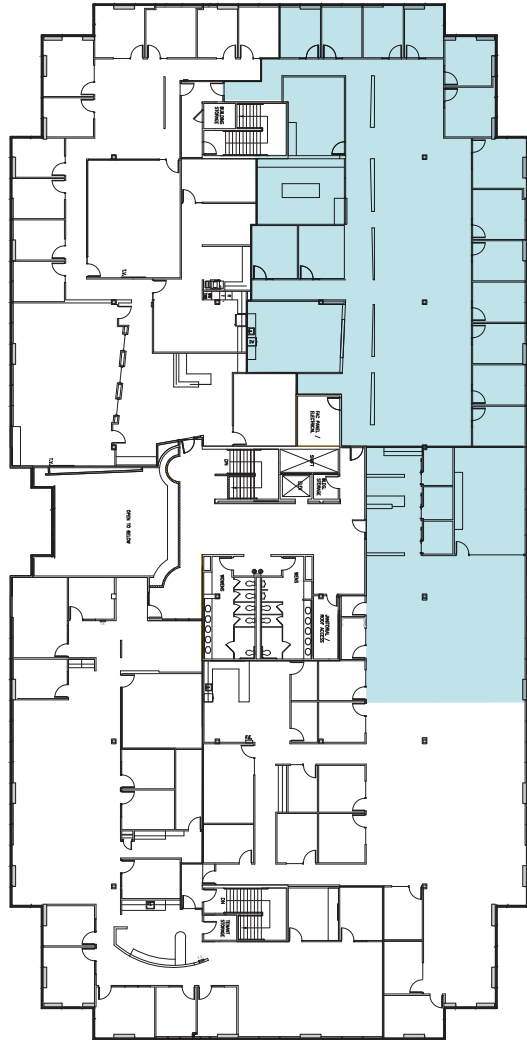
SUITE 200

10,460

RENTABLE SF

9/1/24

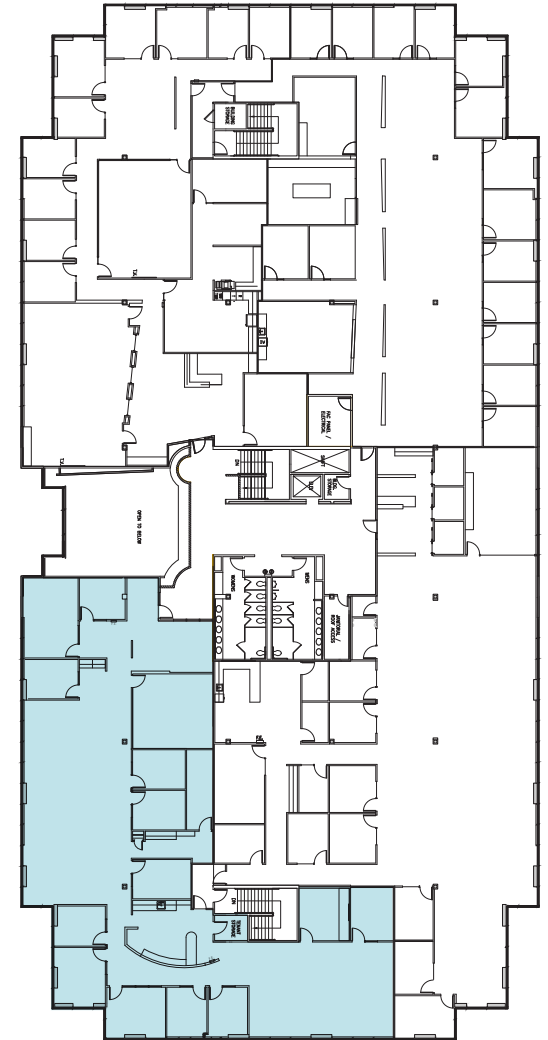
AVAILABLE



SUITE 250

7,272

RENTABLE SF

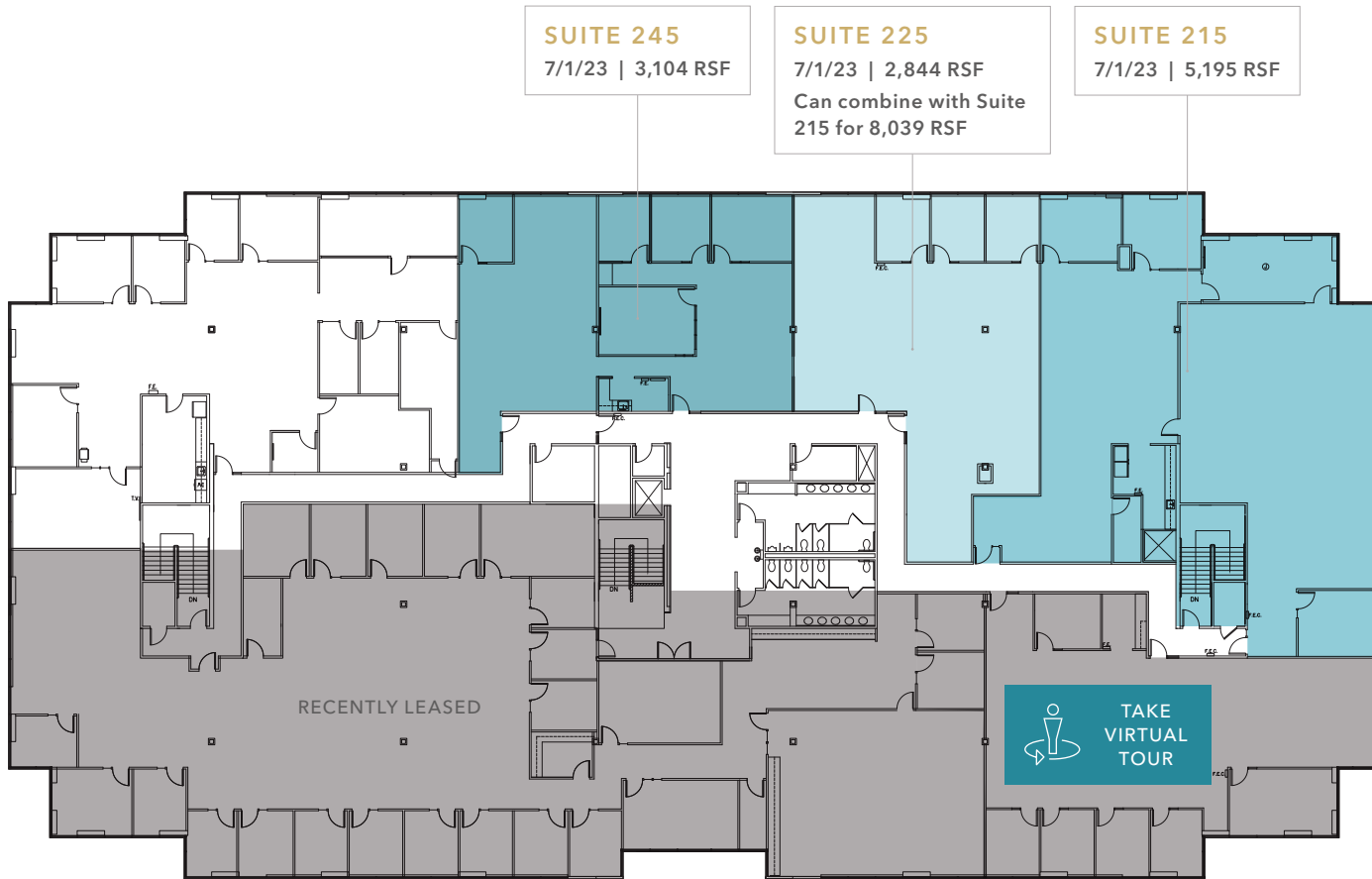


RENTONOFFICEPARK.COM | KIDDER.COM

This information supplied herein is from sources we deem reliable. It is provided without any representation, warranty, or guarantee, expressed or implied as to its accuracy. Prospective Buyer or Tenant should conduct an independent investigation and verification of all matters deemed to be material, including, but not limited to, statements of income and expenses. Consult your attorney, accountant, or other professional advisor.



BUILDING 660 | 2ND FLOOR



SUITE 245
7/1/23 | 3,104 RSF

SUITE 225
7/1/23 | 2,844 RSF
Can combine with Suite 215 for 8,039 RSF

SUITE 215
7/1/23 | 5,195 RSF

SUITE 215

5,195

RENTABLE SF (PLUG & PLAY)

SUITE 225

2,844

RENTABLE SF

SUITES 215 & 225 COMBINED

8,039

RENTABLE SF

SUITE 245

3,104

RENTABLE SF

ALL SUITES COMBINED

11,143

RENTABLE SF

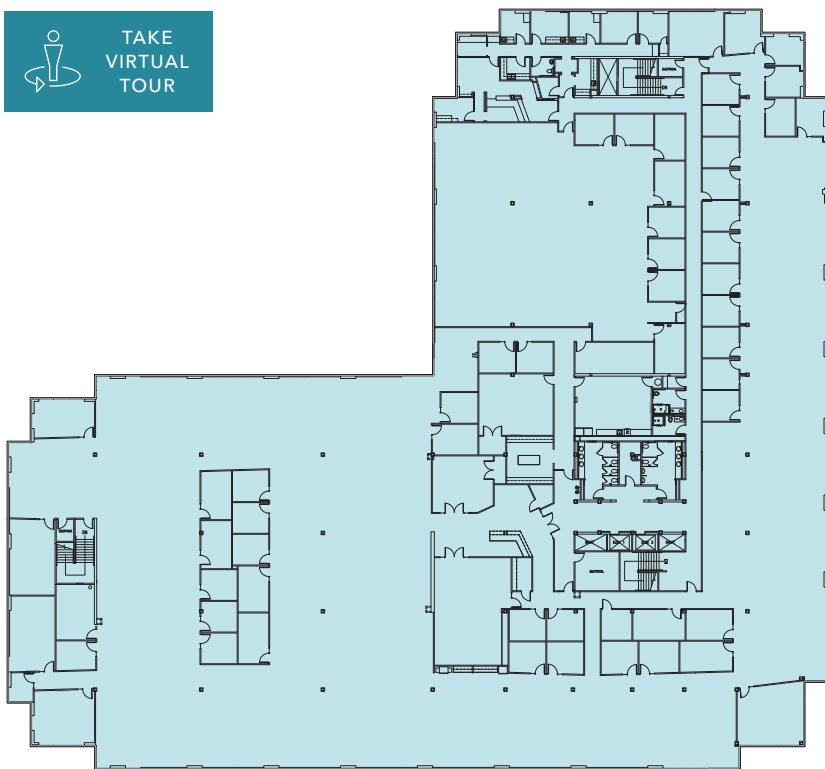
FOR LEASE

BUILDING 700 | 2ND FLOOR

CAN DELIVER ENTIRE FLOOR

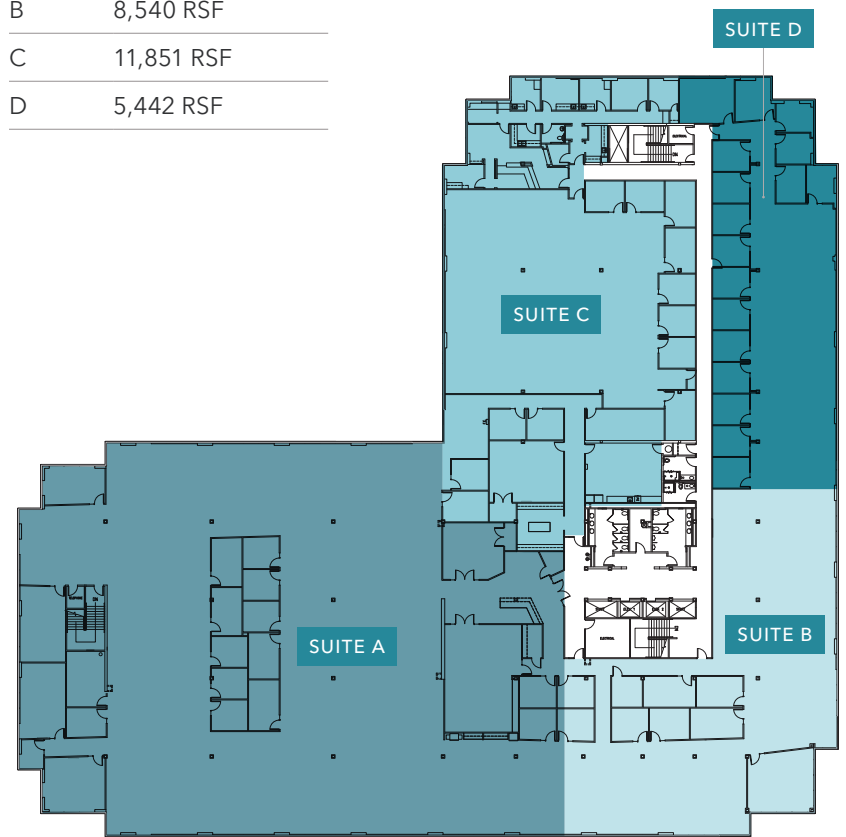
49,040

RENTABLE SF



2ND FLOOR DEMISED

Suite	Divisible to
A	23,207 RSF
B	8,540 RSF
C	11,851 RSF
D	5,442 RSF



RENTONOFFICEPARK.COM | KIDDER.COM

This information supplied herein is from sources we deem reliable. It is provided without any representation, warranty, or guarantee, expressed or implied as to its accuracy. Prospective Buyer or Tenant should conduct an independent investigation and verification of all matters deemed to be material, including, but not limited to, statements of income and expenses. Consult your attorney, accountant, or other professional advisor.



FOR LEASE

BUILDING 700

95,958 RSF

ENTIRE BUILDING

4,000 RSF

DIVISIBLE

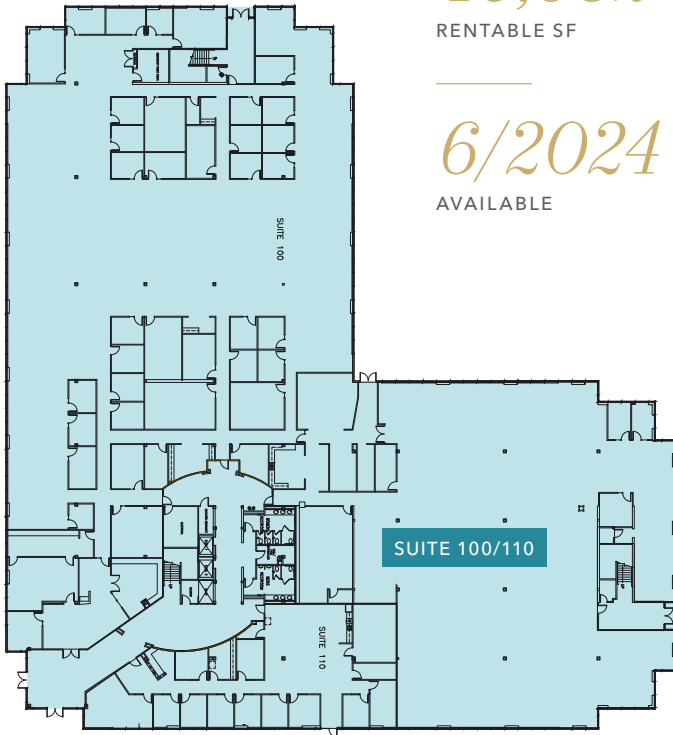
FIRST FLOOR AVAILABLE

46,952

RENTABLE SF

6/2024

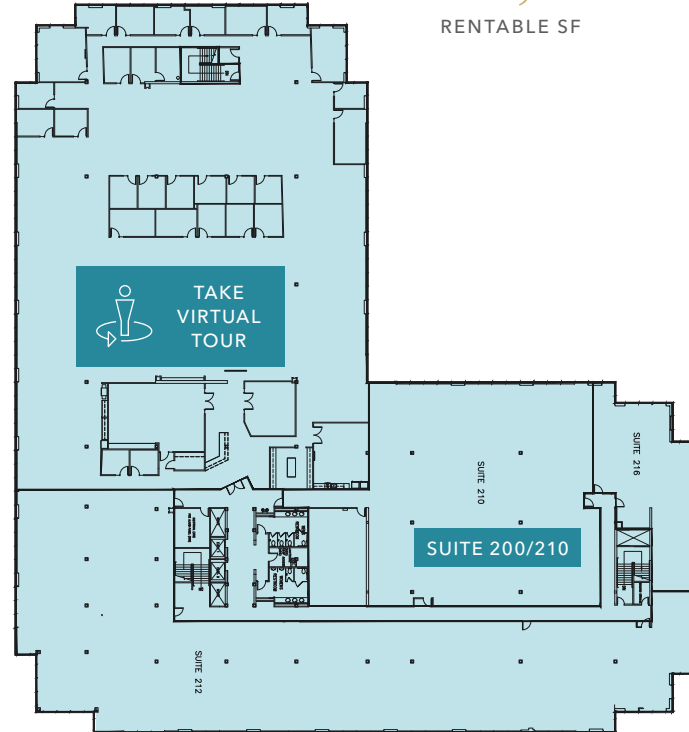
AVAILABLE



2ND FLOOR AVAILABLE

49,006

RENTABLE SF



RENTONOFFICEPARK.COM | KIDDER.COM

This information supplied herein is from sources we deem reliable. It is provided without any representation, warranty, or guarantee, expressed or implied as to its accuracy. Prospective Buyer or Tenant should conduct an independent investigation and verification of all matters deemed to be material, including, but not limited to, statements of income and expenses. Consult your attorney, accountant, or other professional advisor.



BUILDING 800

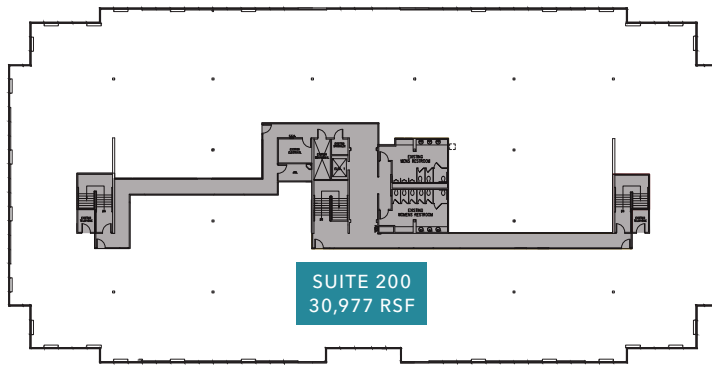
30,977 RSF

ENTIRE SECOND FLOOR

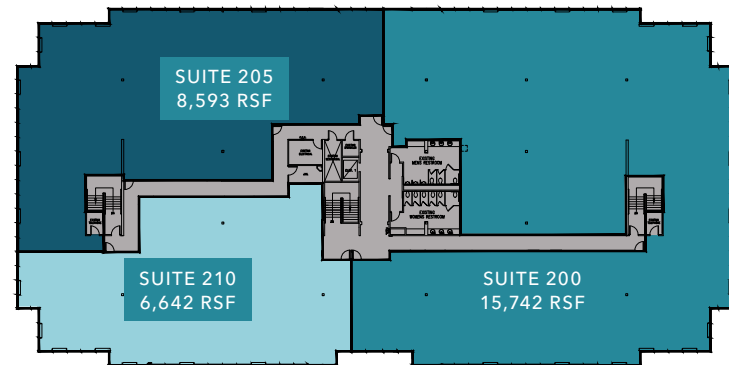
6,600 RSF

DIVISIBLE

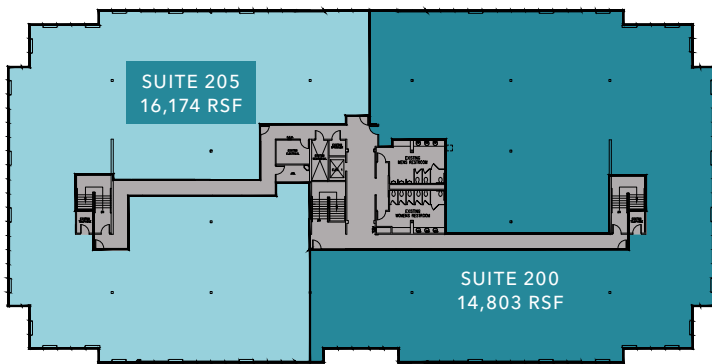
CAN DELIVER ENTIRE FLOOR



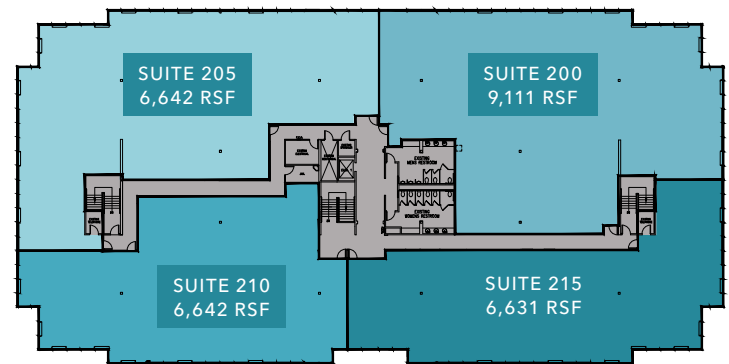
DEMISING OPTION 1

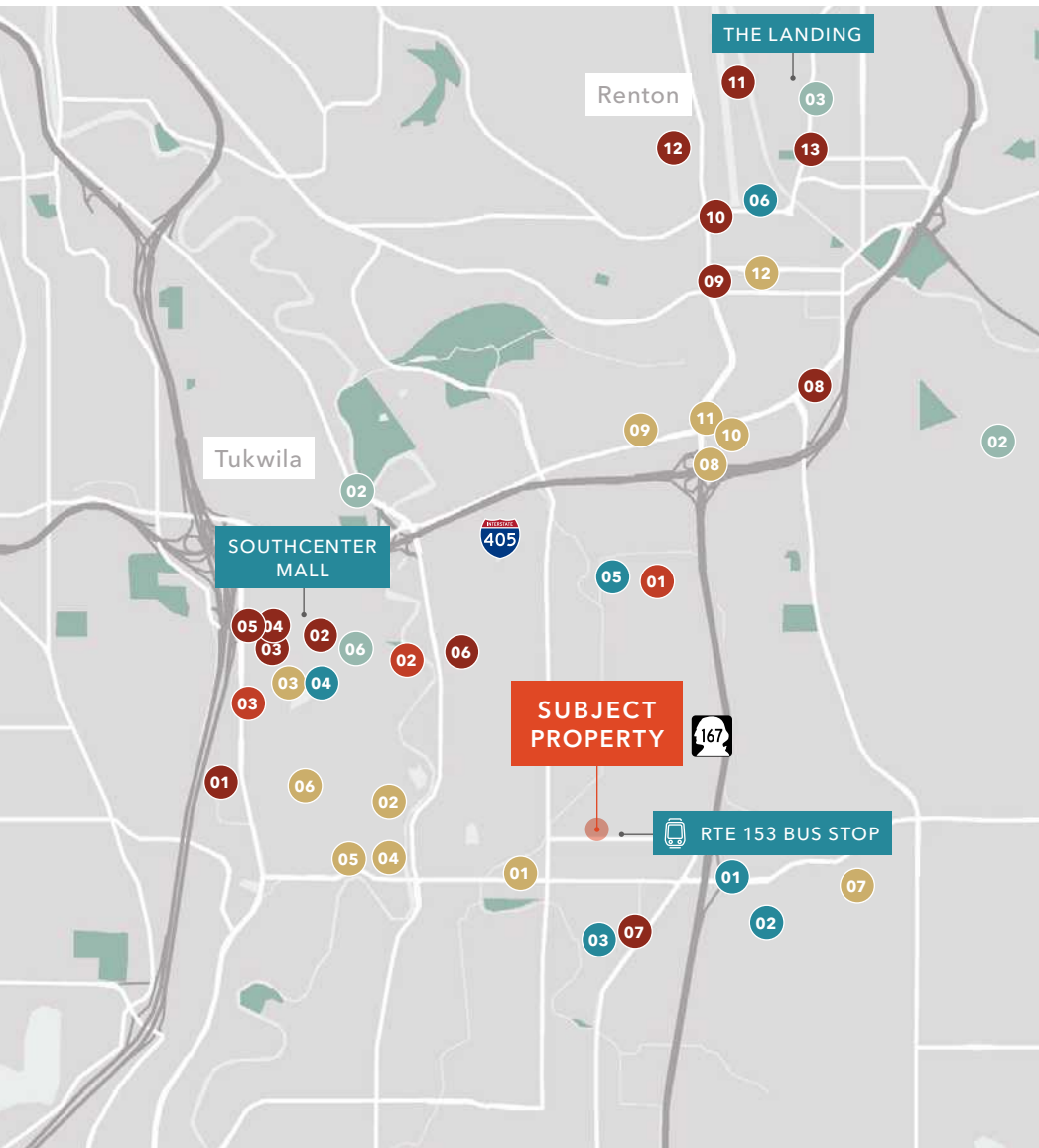


DEMISING OPTION 2



DEMISING OPTION 3





NEARBY AMENITIES

STORES

- 01 Ikea
- 02 Costco
- 03 Target
- 04 Home Depot
- 05 Goodwill
- 06 Best Buy
- 07 Fred Meyer
- 08 Uwajimaya
- 09 Walmart
- 10 McLendon Hardware
- 11 Safeway
- 12 Marshalls

RECREATION & PARKS

- 01 Foster Golf Links
- 02 Maplewood Golf Course
- 03 Top Golf

ACCOMMODATIONS

- 01 Hilton Garden Inn
- 02 Hotel Interurban
- 03 Double Tree Suites by Hilton

RESTAURANTS/BARS

- 01 The Habit Burger Grill
- 02 Olive Garden
- 03 Simply Thai
- 04 The Cheesecake Factory
- 05 Din Tai Fung
- 06 Wendy's
- 07 Starbucks
- 08 Berliner Pub
- 09 Royal Orchid Thai Restaurant
- 10 Exell's Famous Chicken
- 11 Red Robin
- 12 Kizuki Ramen
- 13 Panera Bread

LIFESTYLE & HEALTH

- 01 Valley Medical Center
- 02 UW Medicine Valley Med. Cntr.
- 03 Planet Fitness
- 04 CVS Pharmacy
- 05 Providence Health & Services
- 06 LA Fitness

FOR LEASE



*Exclusively
Leased by*

BRIAN CLAPP
206.248.7316
brian.clapp@kidder.com

SPENCER CLAPP
206.248.7427
spencer.clapp@kidder.com

RENTONOFFICEPARK.COM | KIDDER.COM

This information supplied herein is from sources we deem reliable. It is provided without any representation, warranty, or guarantee, expressed or implied as to its accuracy. Prospective Buyer or Tenant should conduct an independent investigation and verification of all matters deemed to be material, including, but not limited to, statements of income and expenses. Consult your attorney, accountant, or other professional advisor.

