

11100 NE 8TH STREET
BELLEVUE, WA

PLAZA EAST



CLARION PARTNERS

CBRE

BUILDING AMENITIES



Revitalized Building Lobby



Fitness Center & Locker Rooms



Food Provider Canteen Vending



Outdoor plaza & casual meeting space



Bike Room



Elevator access from parking garage direct to tenant floors



Turning Art (rotating art installations)



Upgraded outdoor plaza



On-site parking at a ratio of 2/1,000 SF



FEATURES



- Prominently located at the gateway to downtown Bellevue
- Unparalleled access to I-405 and SR-520
- Walkable to surrounding restaurants, fitness, hotels and entertainment
- Two blocks from the transit center and future light rail station opening in 2023

NEIGHBORHOOD AMENITIES





AVAILABLE SPACE

SUITE/FLOOR	SIZE/RSF	AVAILABLE DATE	Virtual Tour
200	±1,449	September 1, 2024	
300	±8,705	Now	
5 (Full Floor)	±21,861	Now	



SUSTAINABILITY MATTERS

PLAZA EAST cares about the wellness of their tenants and visitors and encourages efforts to maintain a sustainable property.



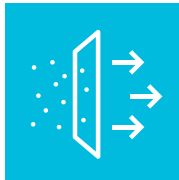
**SILVER WIRED SCORE
CERTIFICATION**



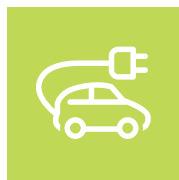
**LEED[®] PLATINUM
CERTIFIED**



**ENERGY STAR
RATED[®]**



**MERV-13 FILTERED
HVAC SYSTEM
TECHNOLOGY**



**EV CHARGING
STATIONS**



PLAZA EAST



CONTACTS

SCOTT M. DAVIS

Executive Vice President
T 425 941 7573
scott.davis@cbre.com

LENNON ATTEBERRY

First Vice President
T 425 462 6991
lennon.attedberry@cbre.com

© 2024 CBRE, Inc. All rights reserved. This information has been obtained from sources believed reliable, but has not been verified for accuracy or completeness. You should conduct a careful, independent investigation of the property and verify all information. Any reliance on this information is solely at your own risk. CBRE and the CBRE logo are service marks of CBRE, Inc. All othermarks displayed on this document are the property of their respective owners. Photos herein are the property of their respective owners. Use of these images without the express written consent of the owner is prohibited. DW 3.20.24



CLARION PARTNERS

CBRE

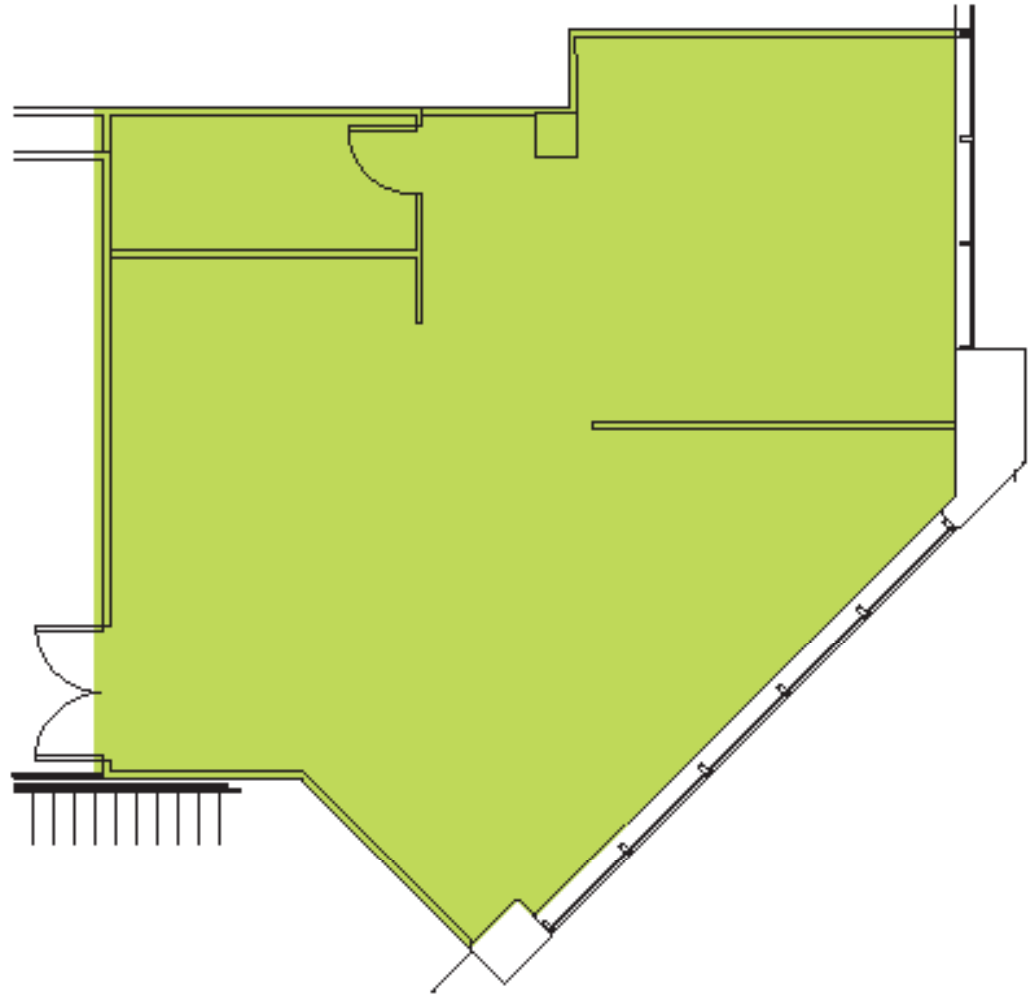
PLAZA EAST

11100 NE 8TH STREET | BELLEVUE, WA

SUITE 200

1,449 SF

Available September 1, 2024



CONTACTS

SCOTT M. DAVIS

Executive Vice President
+1 425 941 7573
scott.davis@cbre.com

LENNON ATTEBERRY

First Vice President
+1 425 462 6991
lennon.attedberry@cbre.com

© 2024 CBRE, Inc. All rights reserved. This information has been obtained from sources believed reliable, but has not been verified for accuracy or completeness. You should conduct a careful, independent investigation of the property and verify all information. Any reliance on this information is solely at your own risk. CBRE and the CBRE logo are service marks of CBRE, Inc. All other marks displayed on this document are the property of their respective owners, and the use of such logos does not imply any affiliation with or endorsement of CBRE. Photos herein are the property of their respective owners. Use of these images without the express written consent of the owner is prohibited. DW 3.21.2024



CLARION PARTNERS

CBRE

PLAZA EAST

11100 NE 8TH STREET | BELLEVUE, WA

SUITE 300

8,705 SF

Available Now



Virtual
Tour
Available

CONTACTS

SCOTT M. DAVIS

Executive Vice President
+1 425 941 7573
scott.davis@cbre.com

LENNON ATTEBERRY

First Vice President
+1 425 462 6991
lennon.ateberry@cbre.com

© 2024 CBRE, Inc. All rights reserved. This information has been obtained from sources believed reliable, but has not been verified for accuracy or completeness. You should conduct a careful, independent investigation of the property and verify all information. Any reliance on this information is solely at your own risk. CBRE and the CBRE logo are service marks of CBRE, Inc. All other marks displayed on this document are the property of their respective owners, and the use of such logos does not imply any affiliation with or endorsement of CBRE. Photos herein are the property of their respective owners. Use of these images without the express written consent of the owner is prohibited. DW 3.21.2024



CLARION PARTNERS



PLAZA EAST

11100 NE 8TH STREET | BELLEVUE, WA

FLOOR 5

21,861 SF (full floor)

Available Now



CONTACTS

SCOTT M. DAVIS

Executive Vice President

+1 425 941 7573

scott.davis@cbre.com

LENNON ATTEBERRY

First Vice President

+1 425 462 6991

lennon.attedberry@cbre.com

© 2024 CBRE, Inc. All rights reserved. This information has been obtained from sources believed reliable, but has not been verified for accuracy or completeness. You should conduct a careful, independent investigation of the property and verify all information. Any reliance on this information is solely at your own risk. CBRE and the CBRE logo are service marks of CBRE, Inc. All other marks displayed on this document are the property of their respective owners, and the use of such logos does not imply any affiliation with or endorsement of CBRE. Photos herein are the property of their respective owners. Use of these images without the express written consent of the owner is prohibited. DW 3.21.2024



CLARION PARTNERS

CBRE

PLAZA EAST

11100 NE 8TH STREET | BELLEVUE, WA

FLOOR 5 - Conceptual Seating Chart

21,861 SF (full floor)

Available Now



CONTACTS

SCOTT M. DAVIS

Executive Vice President
+1 425 941 7573
scott.davis@cbre.com

LENNON ATTEBERRY

First Vice President
+1 425 462 6991
lennon.attedberry@cbre.com

© 2024 CBRE, Inc. All rights reserved. This information has been obtained from sources believed reliable, but has not been verified for accuracy or completeness. You should conduct a careful, independent investigation of the property and verify all information. Any reliance on this information is solely at your own risk. CBRE and the CBRE logo are service marks of CBRE, Inc. All other marks displayed on this document are the property of their respective owners, and the use of such logos does not imply any affiliation with or endorsement of CBRE. Photos herein are the property of their respective owners. Use of these images without the express written consent of the owner is prohibited. DW 3.21.2024