

FOR SUBLEASE

32717 1ST AVE S

FEDERAL WAY, WA



MATT MCLENNAN, SIOR, CCIM
Executive Vice President
253.722.1458
matt.mclennan@kidder.com

*1,550 SF Ground Level Office
Medical or Retail Space Available*

ADDRESS	32717 1st Ave S, Federal Way, WA
DATE AVAILABLE	5/1/2024
MASTER LEASE EXPIRATION	5/31/2025
OFFICE SIZE	1,550 SF
FRONTAGE	First Avenue South frontage
PARKING	Ample parking
SUBLEASE RATE	\$2,700/month, NNN
NNN	\$1,054
ZONING	BN-Neighborhood Business

→ ZONING MAP

→ ZONING USE

1,550
SF AVAILABLE

\$2,700
PER MONTH, NNN

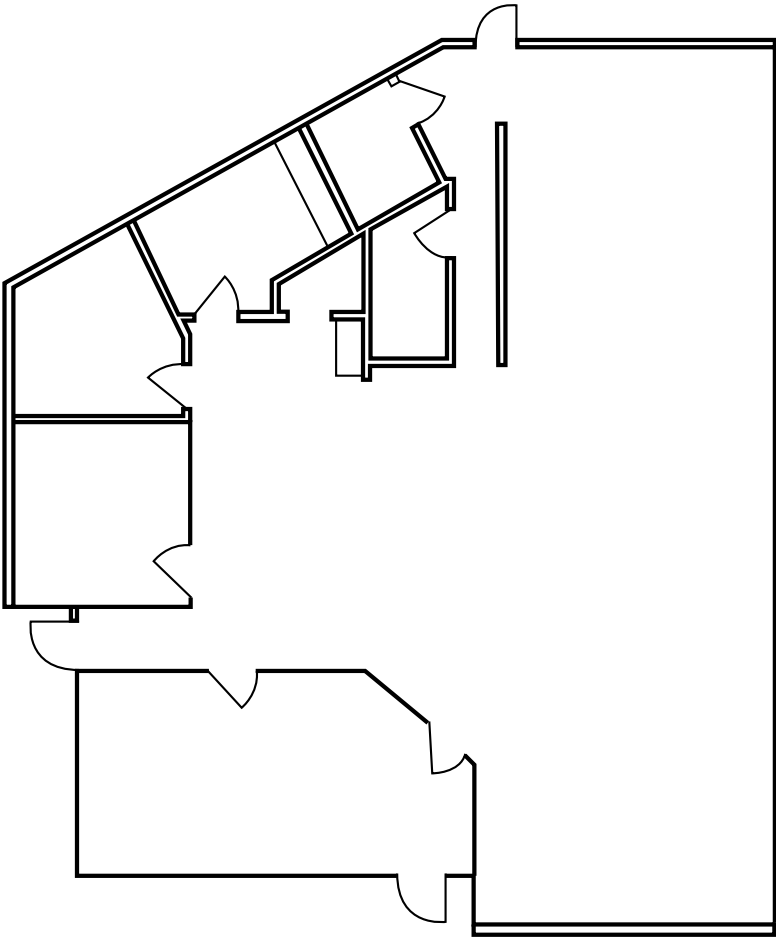
KIDDER.COM

This information supplied herein is from sources we deem reliable. It is provided without any representation, warranty, or guarantee, expressed or implied as to its accuracy. Prospective Buyer or Tenant should conduct an independent investigation and verification of all matters deemed to be material, including, but not limited to, statements of income and expenses. Consult your attorney, accountant, or other professional advisor.



FOR SUBLEASE

FLOORPLAN



KIDDER.COM

This information supplied herein is from sources we deem reliable. It is provided without any representation, warranty, or guarantee, expressed or implied as to its accuracy. Prospective Buyer or Tenant should conduct an independent investigation and verification of all matters deemed to be material, including, but not limited to, statements of income and expenses. Consult your attorney, accountant, or other professional advisor.





KIDDER.COM

This information supplied herein is from sources we deem reliable. It is provided without any representation, warranty, or guarantee, expressed or implied as to its accuracy. Prospective Buyer or Tenant should conduct an independent investigation and verification of all matters deemed to be material, including, but not limited to, statements of income and expenses. Consult your attorney, accountant, or other professional advisor.

