

LACEY COMMERCE BUSINESS CENTER

FOR LEASE

2625, 2633, 2641 WILLAMETTE DR NE | LACEY, WA 98516

PREMIUM OFFICE & WAREHOUSE FLEX SPACE



LEASE INFORMATION

BUILDING 2

Suite D:	2,476 SF
Suite E:	2,225 SF
Suite G:	2,250 SF

Suites D & E can be combined to be 4,701 SF

Lease Rate: \$1.15/SF + NNN

PROPERTY HIGHLIGHTS

- Class A flex office & warehouse space
- Located in the Lacey industrial area
- Immediate access to I-5 (1 mile)
- High image retail / office storefronts
- 16' clear height
- 3 phase power
- HVAC in office
- Oversized 14' GL doors
- Fire Sprinklers
- Ample free parking



JOHN DEHAN

253.779.2433

jdehan@neilwalter.com

NICK RATZKE, SIOR

253.779.2414

nratzke@neilwalter.com

JOEL JONES

253.779.2422

jjones@neilwalter.com

professionally managed/owned by:



All information references in this document are approximate. The information contained herein is contained from sources deemed reliable. It is provided without representation, warranty, or guarantee, expressed or implied as to accuracy. Prospective buyer or tenant should conduct its own independent investigation relating to the property, government codes and regulations, allowed uses, and all other matters, regardless of whether they are referred to or contained in this document.

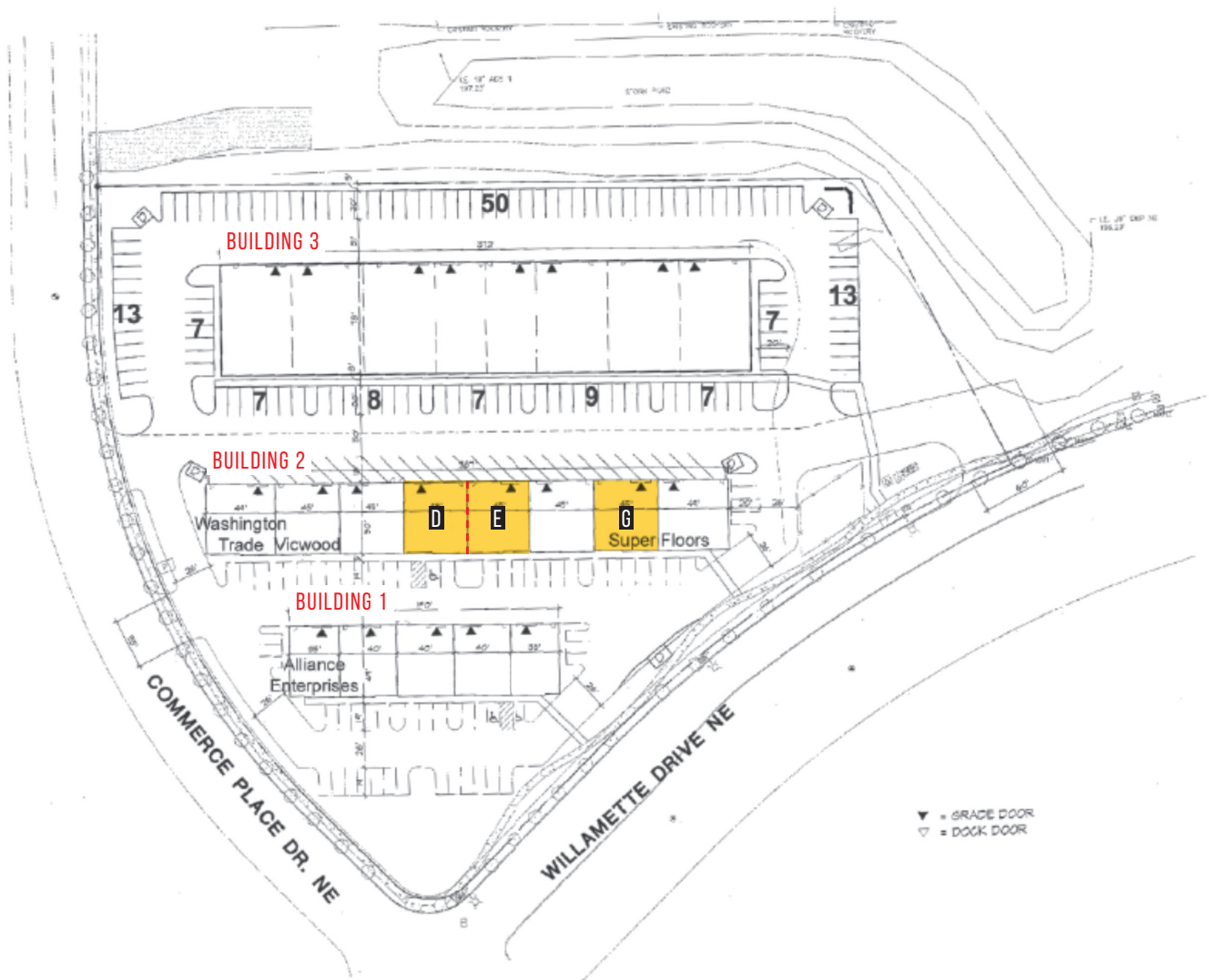
LACEY COMMERCE BUSINESS CENTER

2625, 2633, 2641 WILLAMETTE DR NE | LACEY, WA 98516



AVAILABLE SPACES

Building	Suite	Total SF	Loading	Comments
2	D	2,476 SF	1 GL Door	Can be combine with Suite E to be 4,701 SF
2	E	2,225 SF	1 GL Door	Can be combine with Suite D to be 4,701 SF
2	G	2,250 SF	1 GL Door	-



JOHN DEHAN
253.779.2433
jdehan@neilwalter.com

NICK RATZKE, SIOR
253.779.2414
nratzke@neilwalter.com

JOEL JONES
253.779.2422
jjones@neilwalter.com

professionally
managed/owned by:



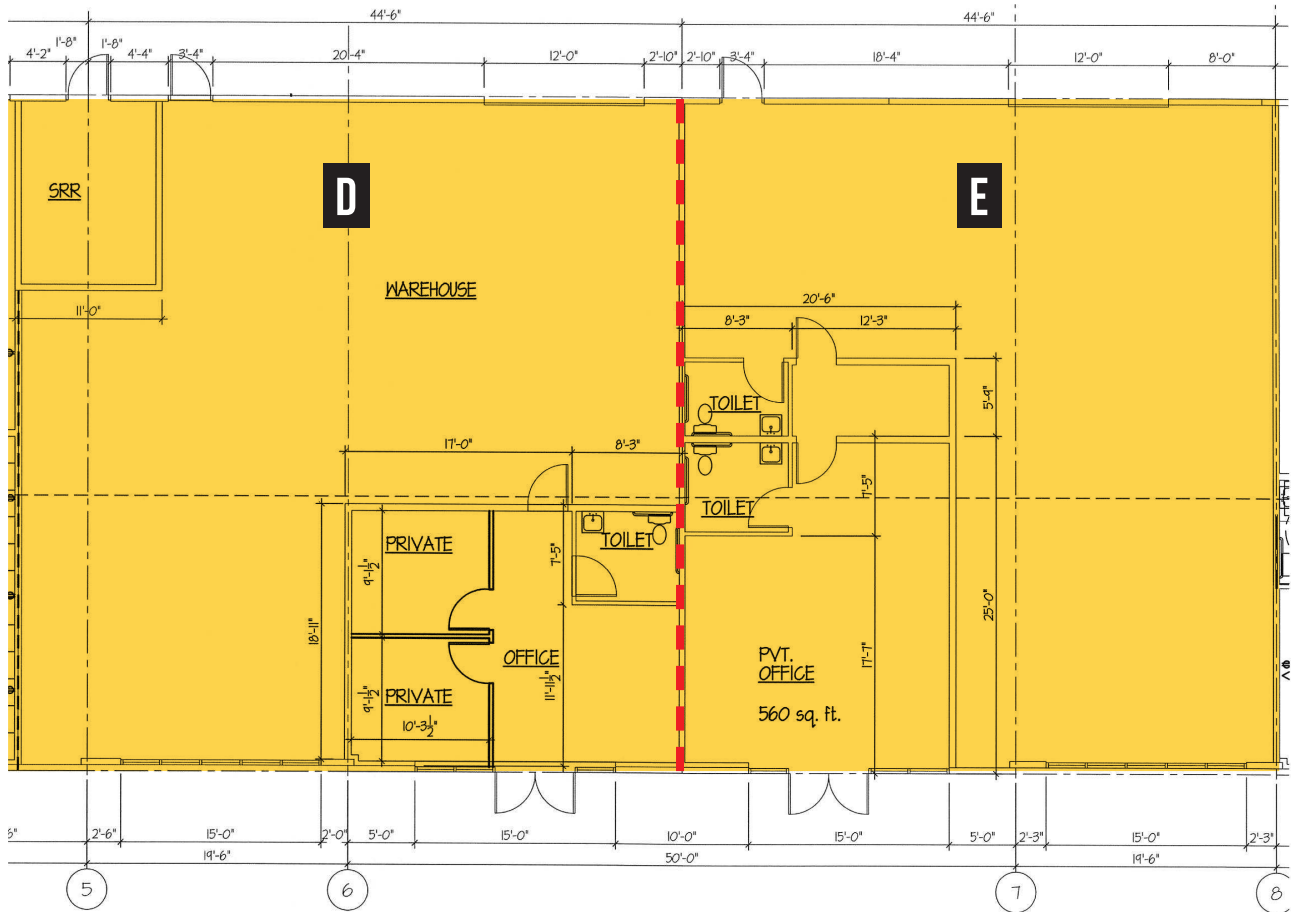
LACEY COMMERCE BUSINESS CENTER

2625, 2633, 2641 WILLAMETTE DR NE | LACEY, WA 98516



AVAILABLE SPACES

Building	Suite	Total SF	Loading	Comments
2	D	2,476 SF	1 GL Door	Can be combine with Suite E to be 4,701 SF
2	E	2,225 SF	1 GL Door	Can be combine with Suite D to be 4,701 SF



JOHN DEHAN
253.779.2433
jdehan@neilwalter.com

NICK RATZKE, SIOR
253.779.2414
nratzke@neilwalter.com

JOEL JONES
253.779.2422
jjones@neilwalter.com

professionally
managed/owned by:



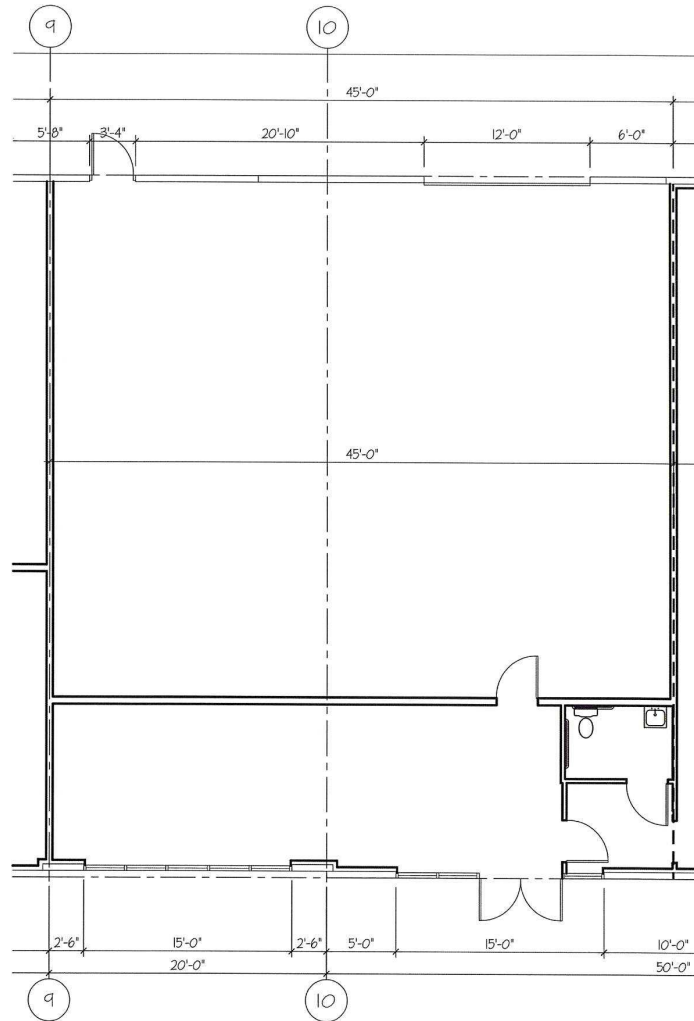
LACEY COMMERCE BUSINESS CENTER

2625, 2633, 2641 WILLAMETTE DR NE | LACEY, WA 98516



AVAILABLE SPACE

Building	Suite	Total SF	Loading
2	G	2,250 SF	1 GL Door



JOHN DEHAN
253.779.2433
jdehan@neilwalter.com

NICK RATZKE, SIOR
253.779.2414
nratzke@neilwalter.com

JOEL JONES
253.779.2422
jjones@neilwalter.com

professionally
managed/owned by:

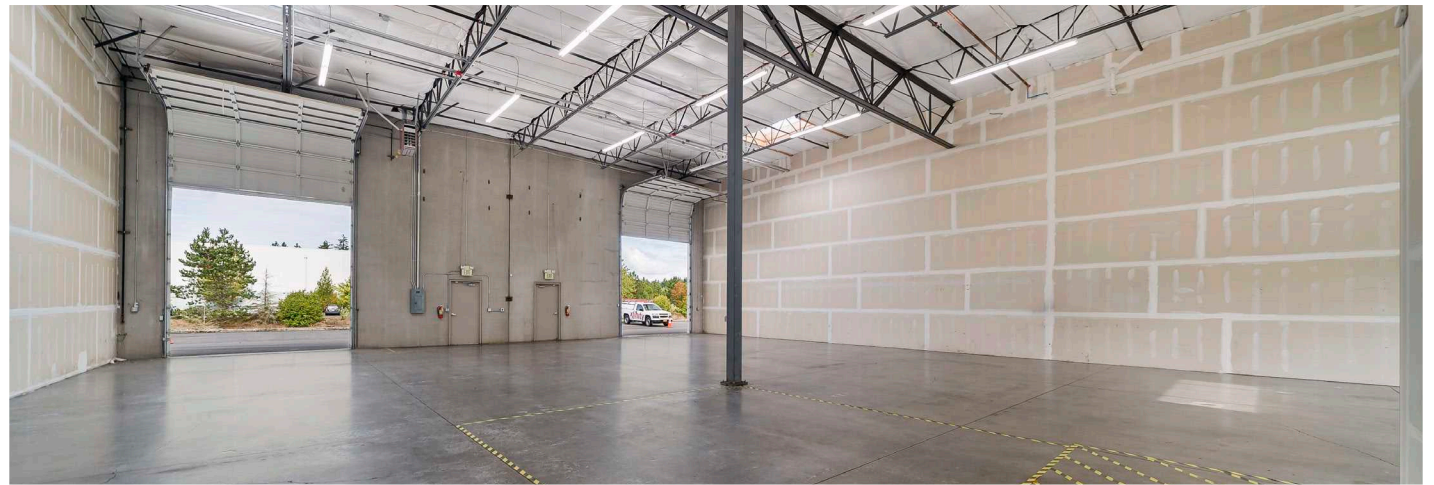


LACEY COMMERCE BUSINESS CENTER

2625, 2633, 2641 WILLAMETTE DR NE | LACEY, WA 98516



NEIL WALTER
COMPANY



JOHN DEHAN

253.779.2433

jdehan@neilwalter.com

NICK RATZKE, SIOR

253.779.2414

nratzke@neilwalter.com

JOEL JONES

253.779.2422

jjones@neilwalter.com

professionally
managed/owned by:

CORLISS
MANAGEMENT GROUP

All information references in this document are approximate. The information contained herein is contained from sources deemed reliable. It is provided without representation, warranty, or guarantee, expressed or implied as to accuracy. Prospective buyer or tenant should conduct its own independent investigation relating to the property, government codes and regulations, allowed uses, and all other matters, regardless of whether they are referred to or contained in this document.

LACEY COMMERCE BUSINESS CENTER

2625, 2633, 2641 WILLAMETTE DR NE | LACEY, WA 98516



JOHN DEHAN
253.779.2433
jdehan@neilwalter.com

NICK RATZKE, SIOR
253.779.2414
nratzke@neilwalter.com

JOEL JONES
253.779.2422
jjones@neilwalter.com

professionally
managed/owned by:



All information references in this document are approximate. The information contained herein is contained from sources deemed reliable. It is provided without representation, warranty, or guarantee, expressed or implied as to accuracy. Prospective buyer or tenant should conduct its own independent investigation relating to the property, government codes and regulations, allowed uses, and all other matters, regardless of whether they are referred to or contained in this document.