

FOR LEASE

Owned and Operated by 

SOUTHCENTER WEST, BUILDING B

1177 Andover Park W, Tukwila, WA 98118

±19,158 SF

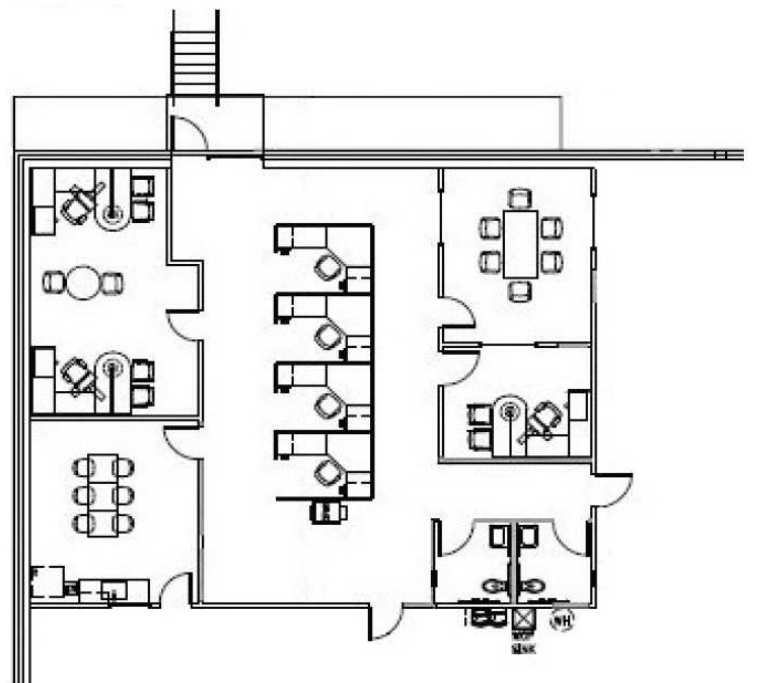
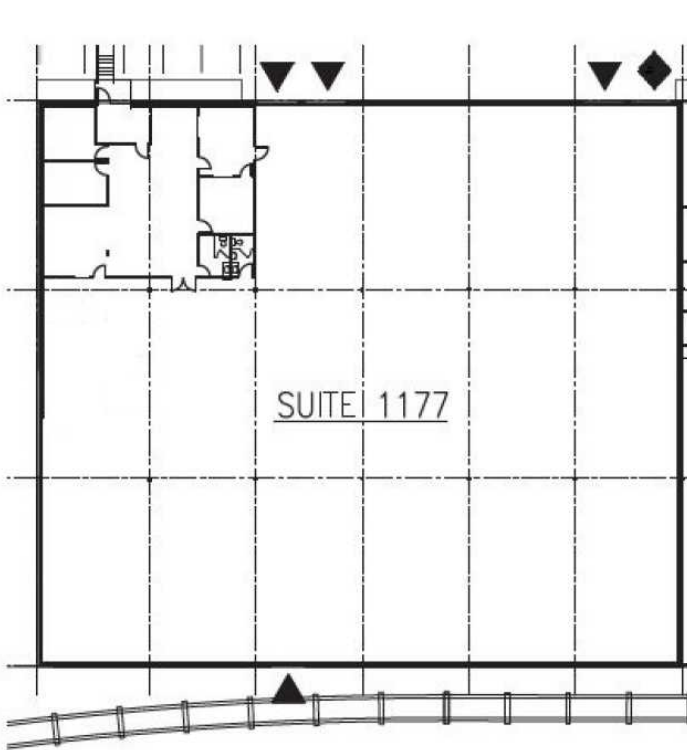


**LEASING INFO
& CONTACT**

Chris Spofford
David Cahill

(425) 890-6963 / chris.spofford@jll.com
(206) 930-5599 / david.cahill@jll.com





SPECIFICATIONS

Building available	19,158 SF
Office available	2,028 SF
Dock / Grade	3 / 1
Clear height	24'
Column spacing	24' x 43'
Rates	Contact brokers
Timing	September 2024

Power	400-amp 120/208V, with (2) 200-amp panels & (1) 125-amp remote panel
Lighting	Energy efficient LED
Parking	Ample
Notes	Building is rail served
Location	Immediate access to I-5, I-405, & W Valley Hwy