

# DOWNTOWN EVERETT OFFICE / RETAIL FOR SUBLEASE



## 2924 COLBY AVE EVERETT, WA 98201

PARCEL # **004391-682-027-00**

AVAILABLE SF **approx. 3,700 RSF**

LEASE RATE **\$16.00 SF/YR + NNN**

LEASE TYPE **NNN**

NNN EXPENSES **approx. \$1.80 / SF / YR**

- Single-Tenant Retail/Office Space in Downtown Everett
- Exceptional Visibility
- Sublease Through July 2025
- Former Mortgage Office
- Close Proximity to Port of Everett Waterfront, Providence Medical Center, Snohomish County Campus, & Several Neighborhood Amenities



**WESTLAKE**  
ASSOCIATES, INC.

**MARK ALFIERI**  
BROKER

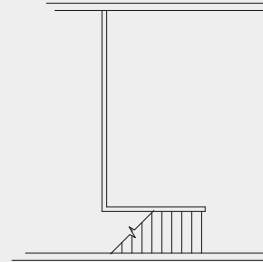
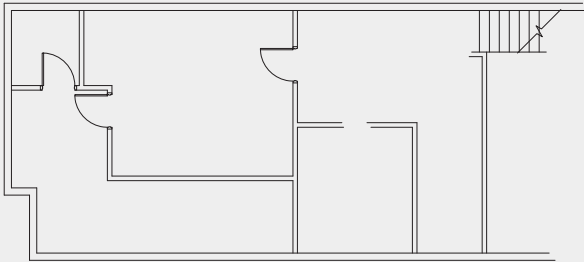
**P 425.985.8542**  
malfieri@westlakeassociates.com



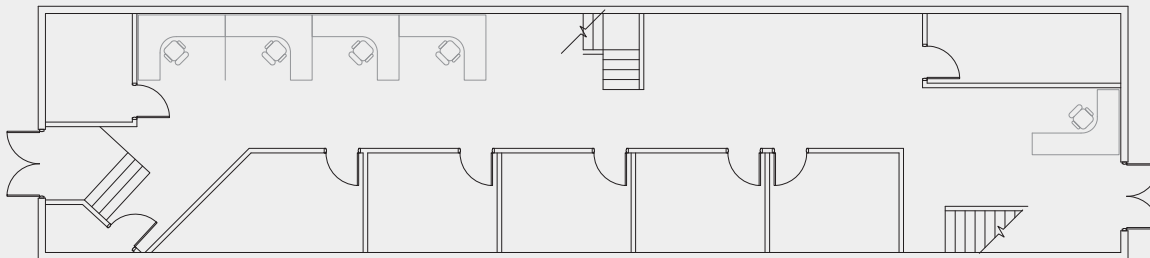
**PETER ARGERES**  
BROKER

**P 206.612.7877**  
pargeres@ewingandclark.com

# OFFICE / RETAIL FOR SUBLEASE



2 Everett AUMC  
2nd Floor Scale Unknown



1 Everett AUMC  
1st Floor Scale Unknown

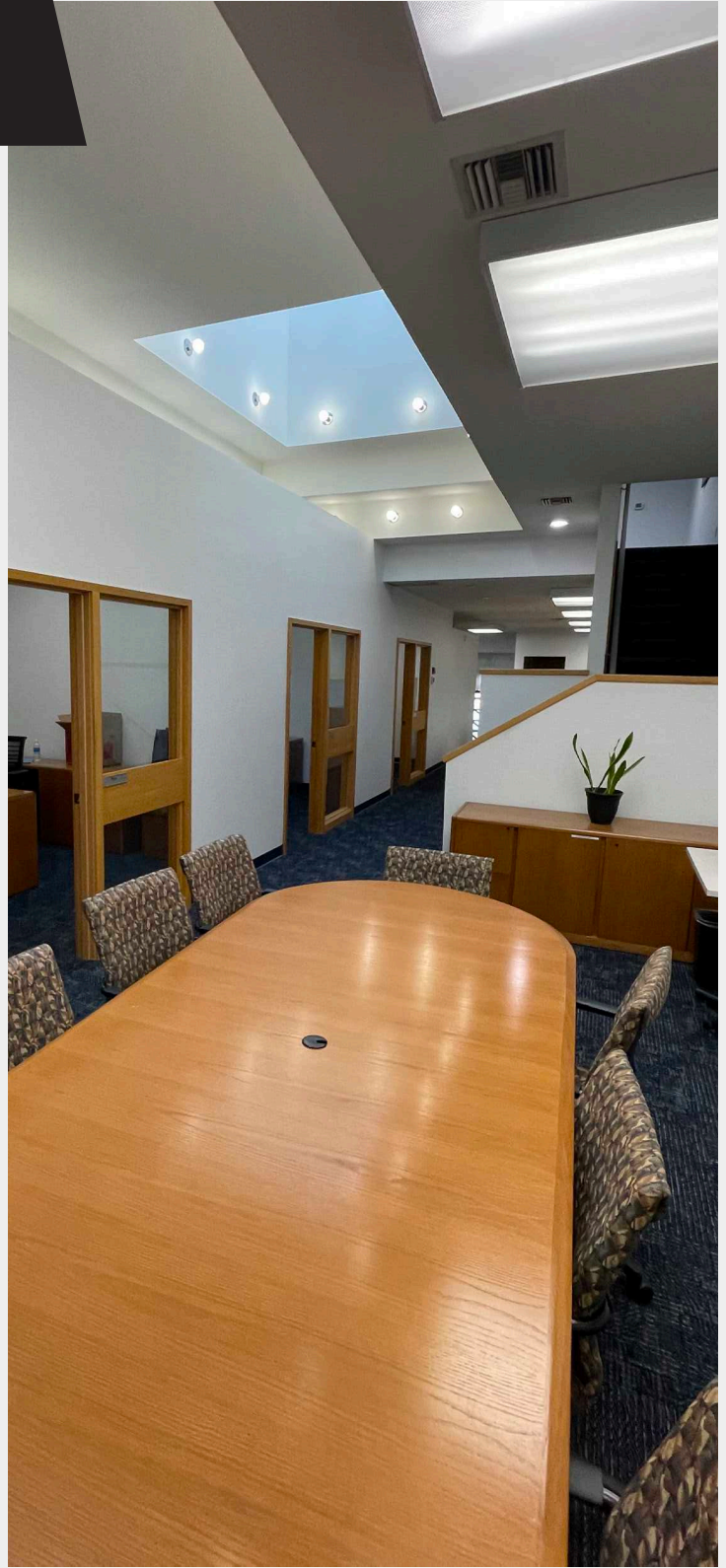


**MARK ALFIERI**  
BROKER  
P 425.985.8542  
malfieri@westlakeassociates.com



**PETER ARGERES**  
BROKER  
P 206.612.7877  
pargeres@ewingandclark.com

# OFFICE / RETAIL FOR SUBLEASE



**MARK ALFIERI**

BROKER

P 425.985.8542

[malfieri@westlakeassociates.com](mailto:malfieri@westlakeassociates.com)



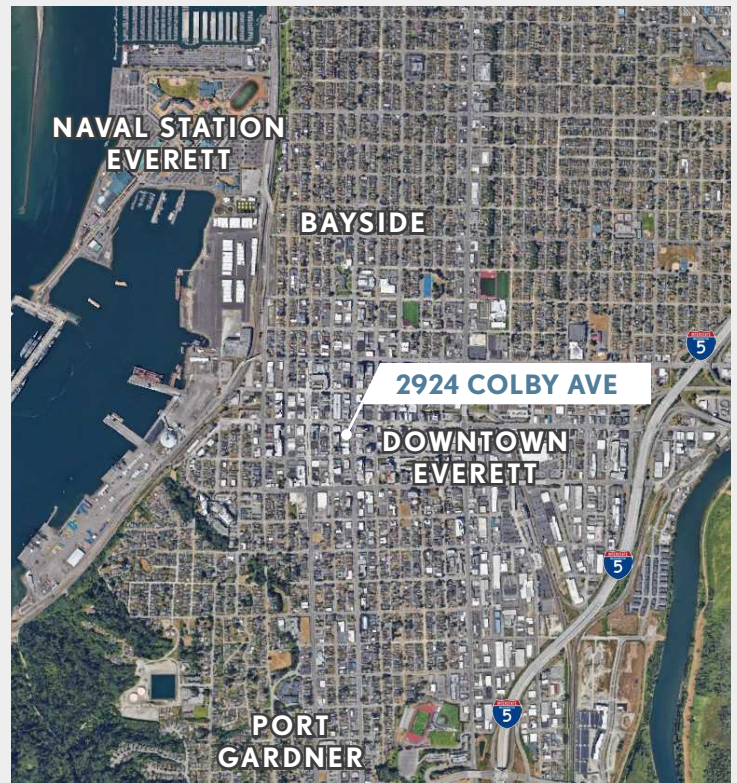
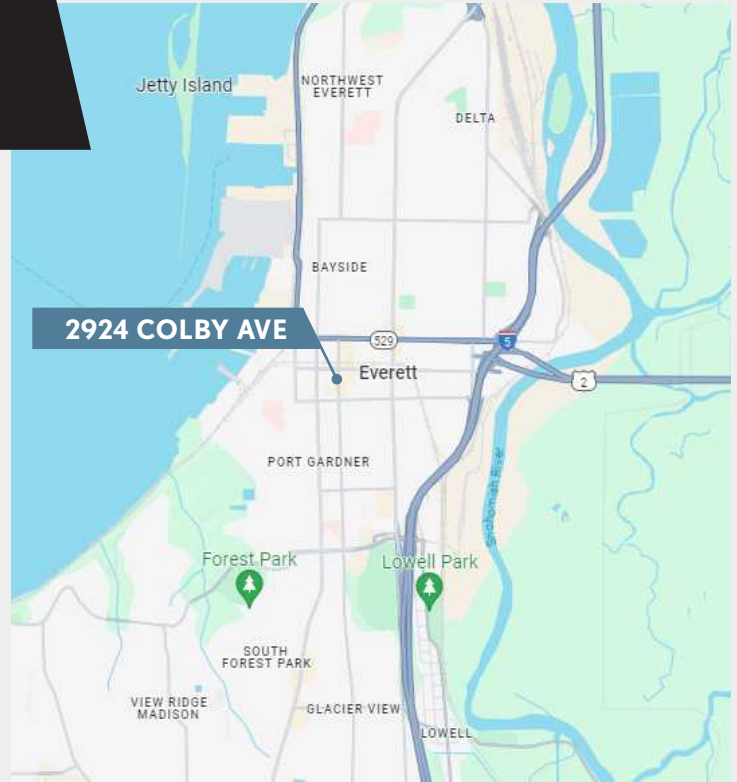
**PETER ARGERES**

BROKER

P 206.612.7877

[pargeres@ewingandclark.com](mailto:pargeres@ewingandclark.com)

# OFFICE / RETAIL FOR SUBLEASE



©2024 WESTLAKE ASSOCIATES, INC.  
DISCLAIMER: This information has been secured from sources we believe to be reliable, but we make no representations or warranties, expressed or implied, as to the accuracy of the information. References to square footage, age, and numbers are approximate. Parties must verify the information and bear all risk for any inaccuracies.



**MARK ALFIERI**  
BROKER

P 425.985.8542  
malfieri@westlakeassociates.com



**PETER ARGERES**  
BROKER

P 206.612.7877  
pargeres@ewingandclark.com