

# PUYALLUP OFFICE SPACE FOR SUBLEASE



## 11201 88TH AVE E

PUYALLUP, WA 98373

PARCEL # **602136-0-390**

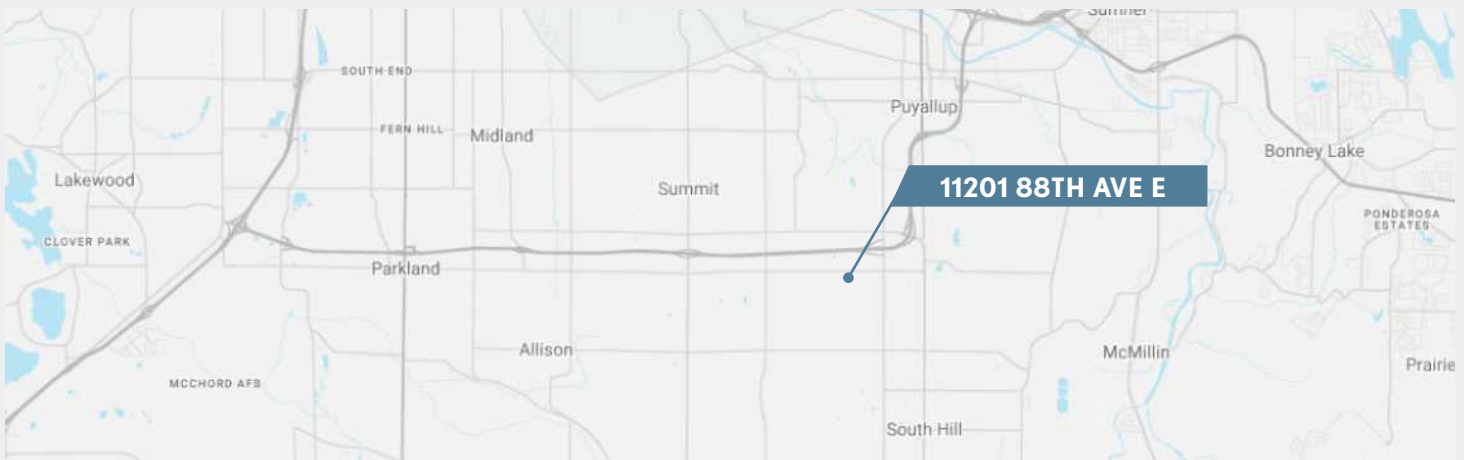
AVAILABLE SF **1,400 RSF**

LEASE RATE **\$18.00 SF/YR + NNN**

LEASE TYPE **NNN**

NNN EXPENSES **approx. \$8.00 / SF / YR**

- Sublease Through July 2026
- Suite 220, 2nd Floor
- Former Mortgage Office
- Reception, Private Offices, Kitchen Area
- Across From South Hill Mall & Costco
- Easy Access From SR-512
- Large On-Site Parking Lot



**WESTLAKE**  
ASSOCIATES, INC.

**MARK ALFIERI**

BROKER

P 425.985.8542

malfieri@westlakeassociates.com



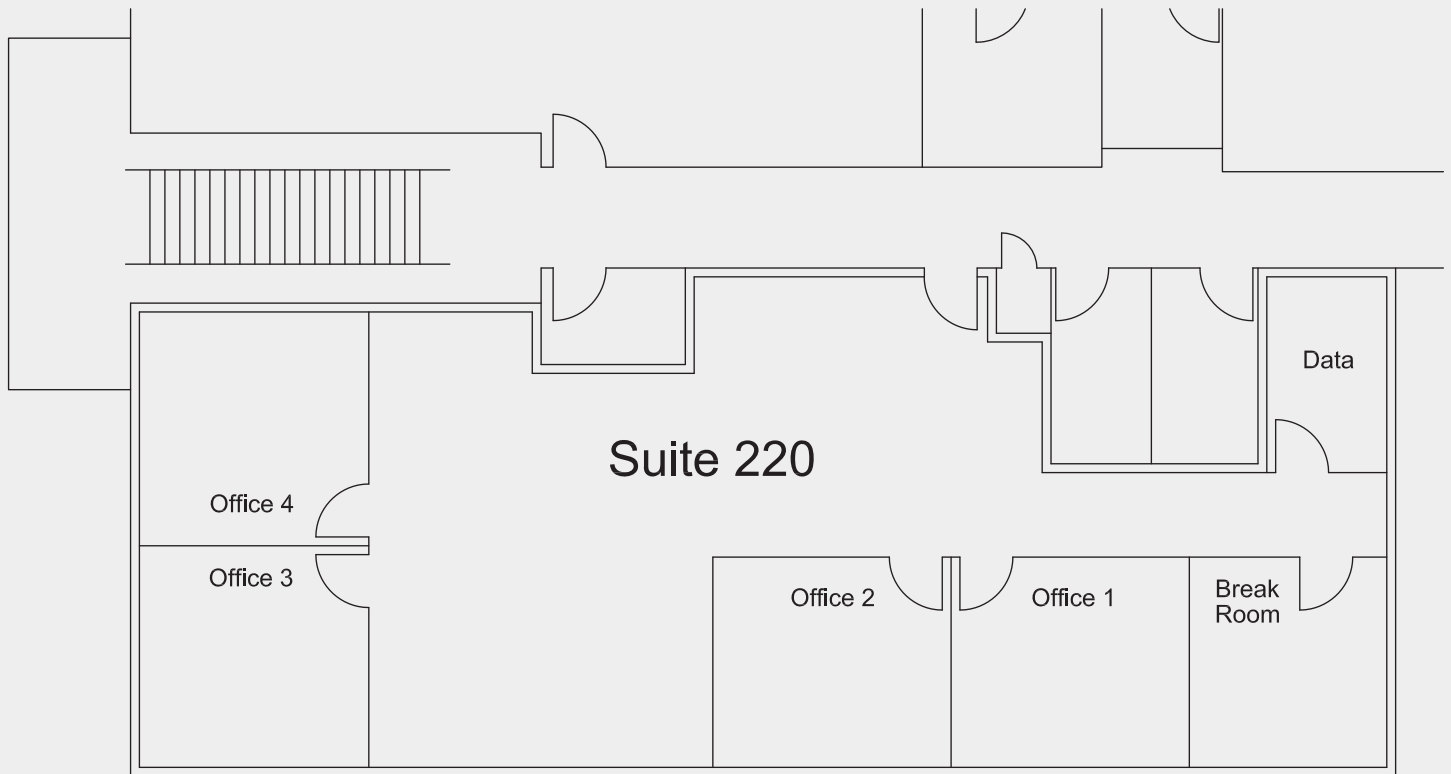
**PETER ARGERES**

BROKER

P 206.612.7877

pargeres@ewingandclark.com

# OFFICE SPACE FOR SUBLEASE



Puyallup Procura - Durango Bldg

approximately 10'  
August 2020  
Not to Scale



**MARK ALFIERI**  
BROKER

**P 425.985.8542**  
[malfieri@westlakeassociates.com](mailto:malfieri@westlakeassociates.com)

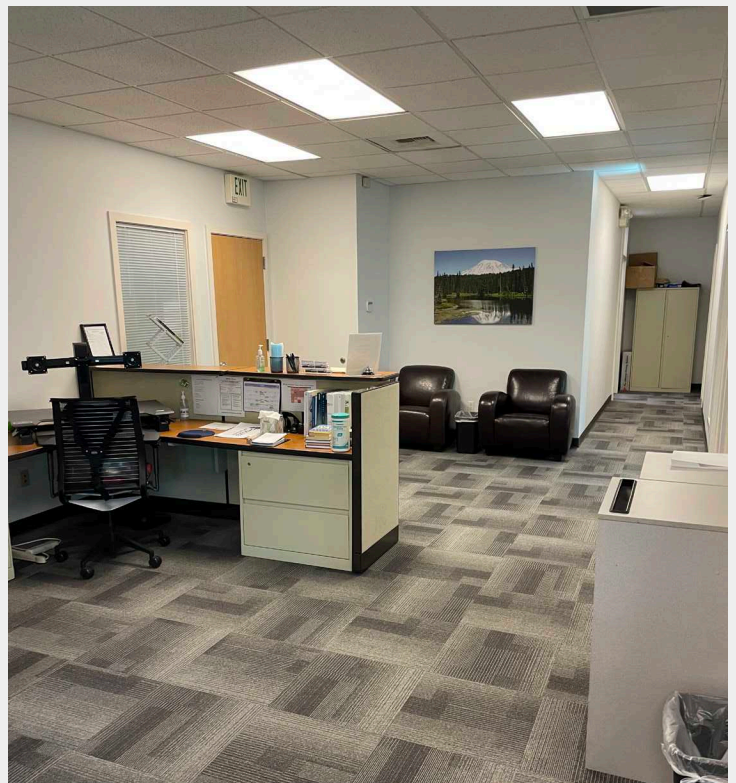
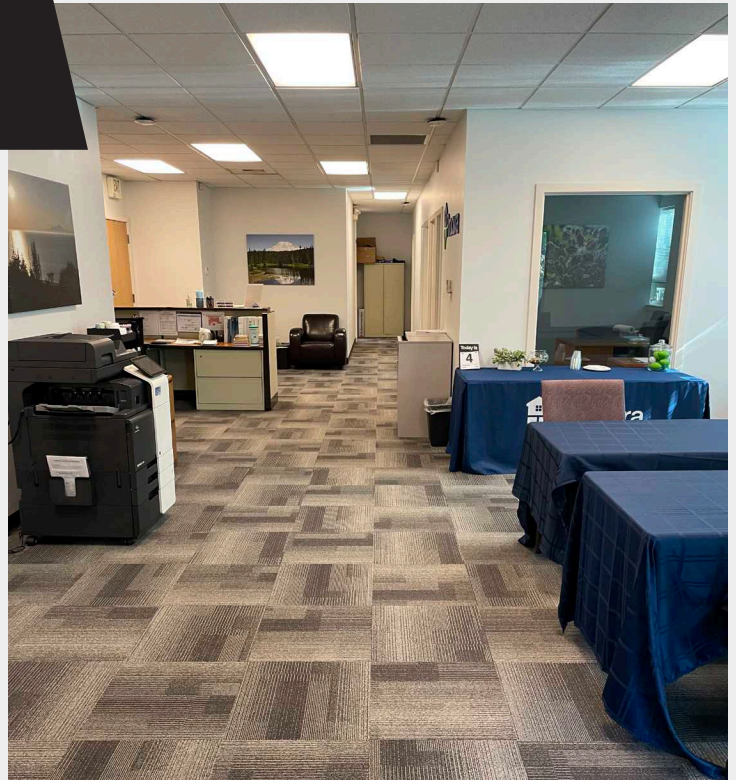


**PETER ARGERES**  
BROKER

**P 206.612.7877**  
[pargeres@ewingandclark.com](mailto:pargeres@ewingandclark.com)



# OFFICE SPACE FOR SUBLEASE



**MARK ALFIERI**  
BROKER

P 425.985.8542  
malfieri@westlakeassociates.com

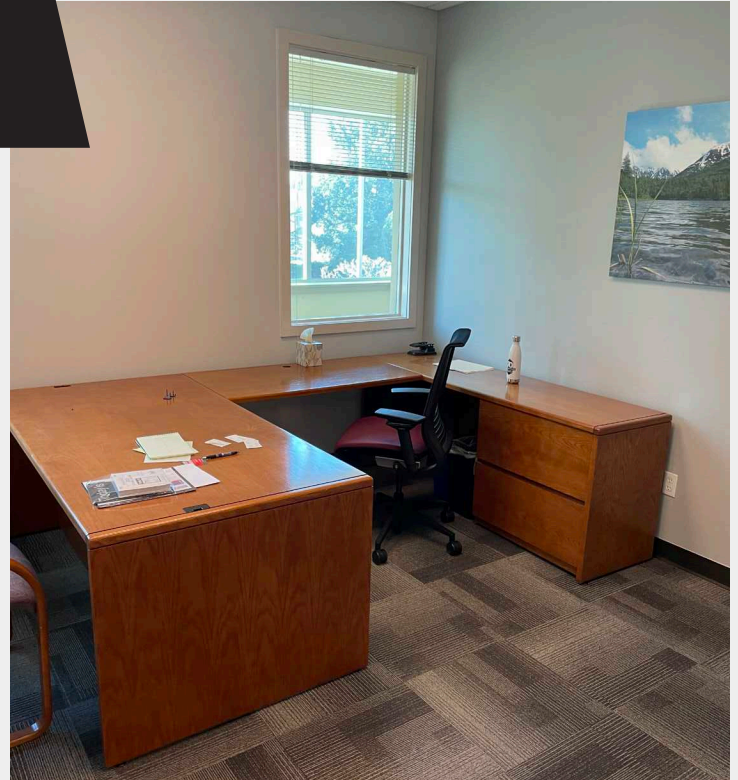
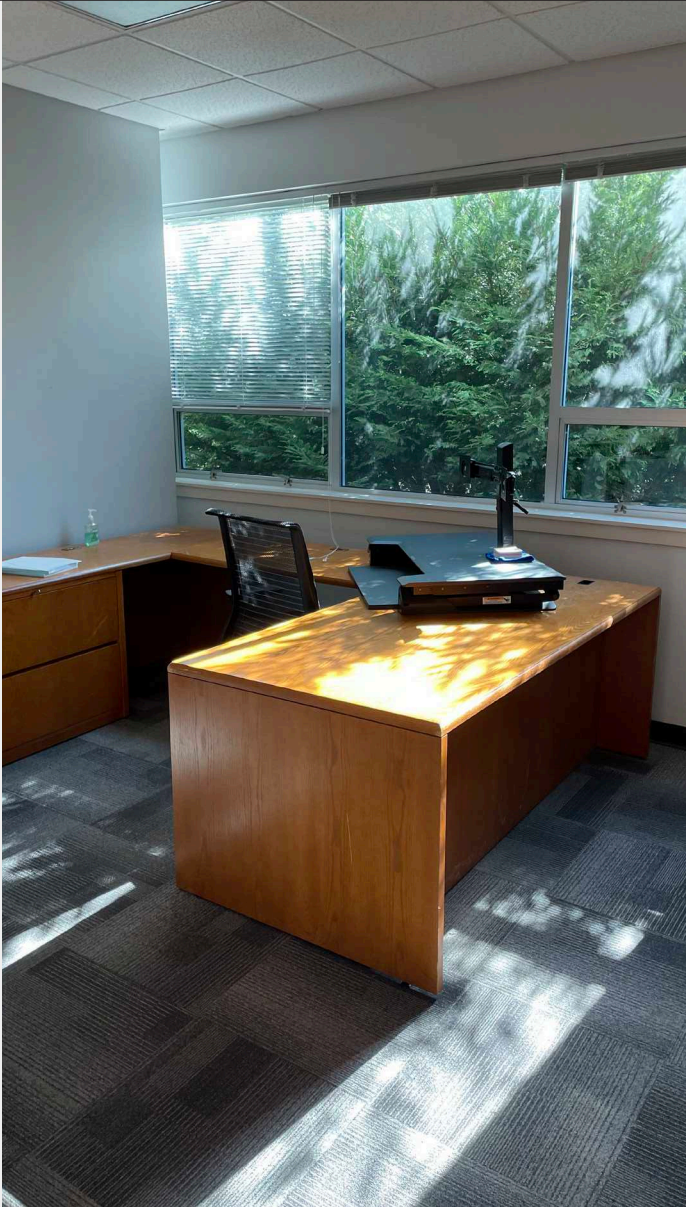


**PETER ARGERES**  
BROKER

P 206.612.7877  
pargeres@ewingandclark.com



# OFFICE SPACE FOR SUBLEASE



©2024 WESTLAKE ASSOCIATES, INC.

DISCLAIMER: This information has been secured from sources we believe to be reliable, but we make no representations or warranties, expressed or implied, as to the accuracy of the information. References to square footage, age, and numbers are approximate. Parties must verify the information and bear all risk for any inaccuracies.



**MARK ALFIERI**  
BROKER

P 425.985.8542  
malfieri@westlakeassociates.com



**PETER ARGERES**  
BROKER

P 206.612.7877  
pargeres@ewingandclark.com