

AGGRESSIVE PLUG & PLAY SPACE - \$32 GROSS

PALMER COURT

1000 1st Ave S. Seattle, WA 98134

NEWMARK

Cavan O'Keefe

t 206-395-2903

cavan.okeefe@nmrk.com

Jesse Ottele

t 206-452-4529

jesse.ottele@nmrk.com

BUILDING HIGHLIGHTS

Stunning views of Elliott Bay, downtown
and stadiums

Market ready, creative office space with
exposed ceilings and plug & play furniture

On-site bike storage and shower facilities

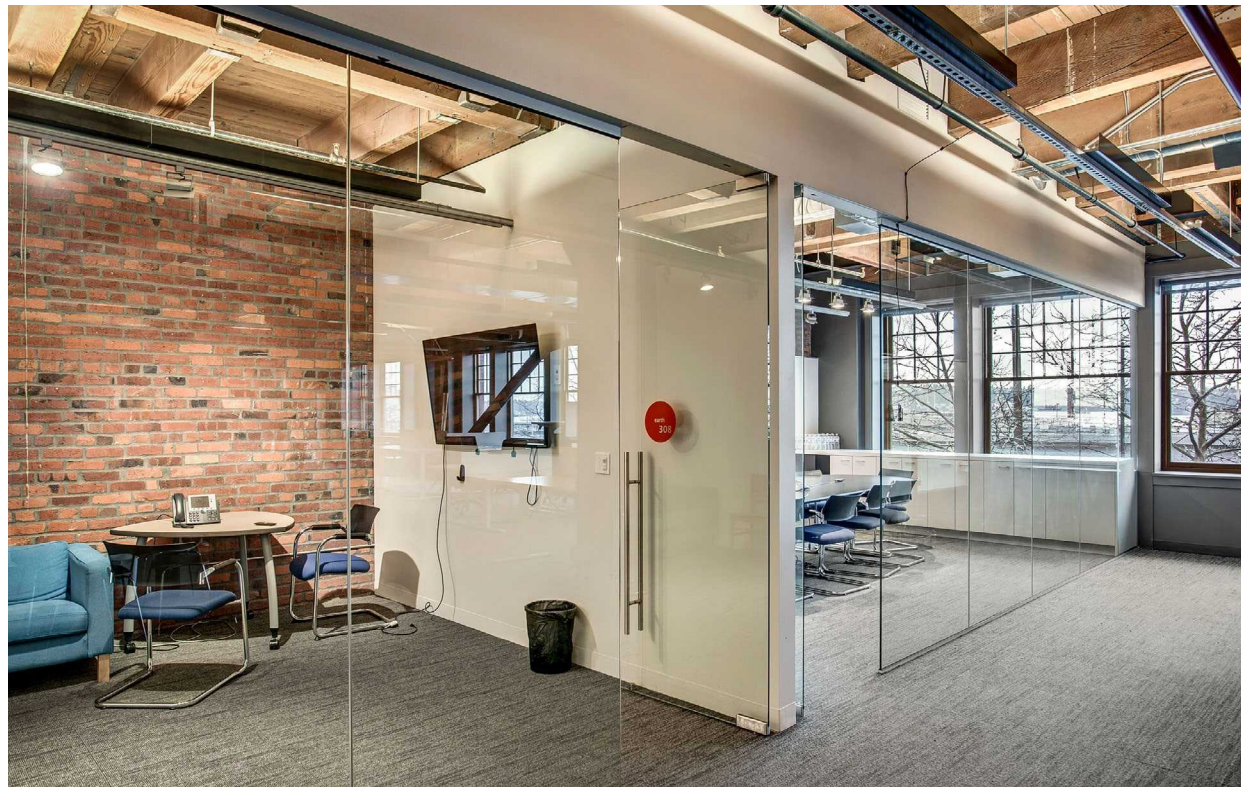
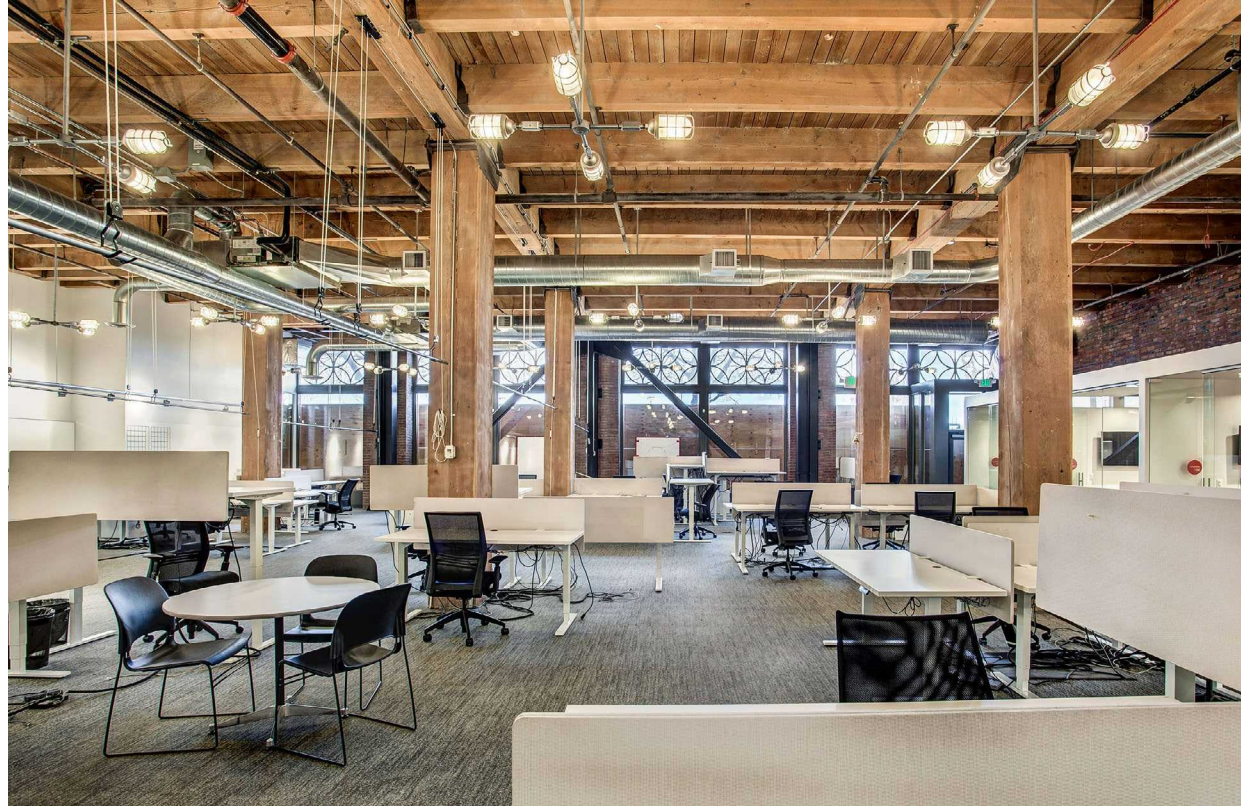
Branding and signage ability in view of the
thousands of drivers and sports fans

Easy access to I-5 and I-90 via Edgar
Martinez Way

Efficient 10,000SF floorplates allowing
mid-size companies the ability to control
the identity and space

Unparalleled Stadium district location on
the edge of Pioneer Square and CBD with
direct access to the revitalized waterfront

Parking: multiple surface lots and garages



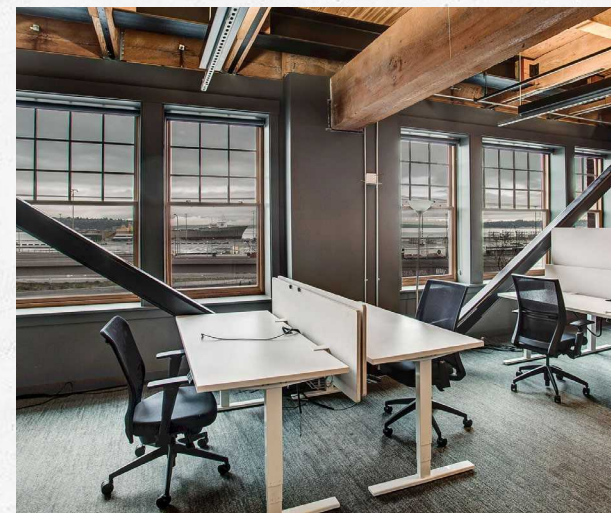
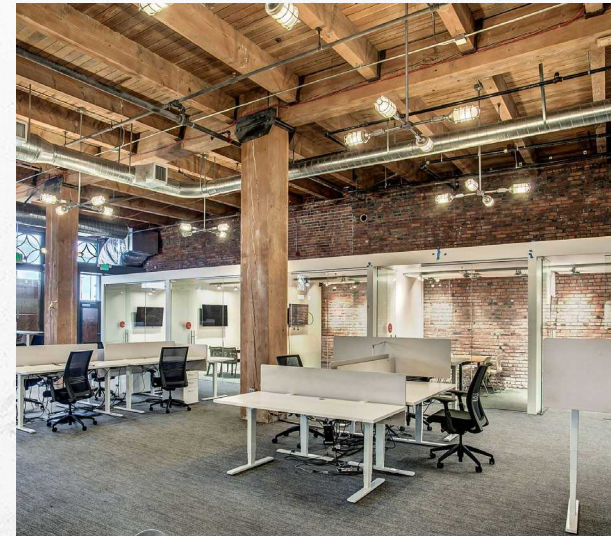
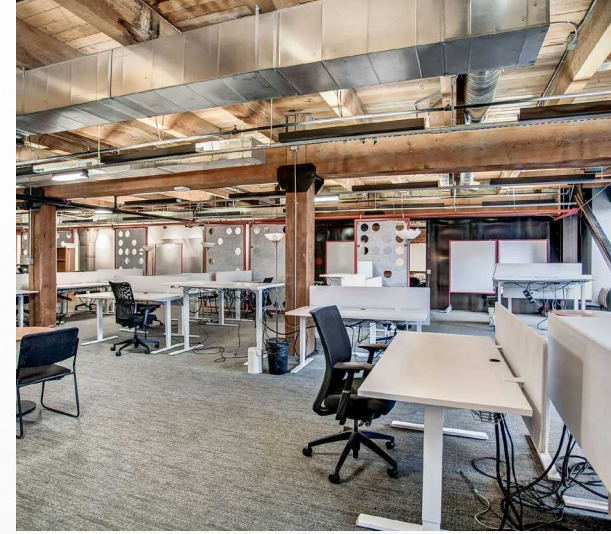
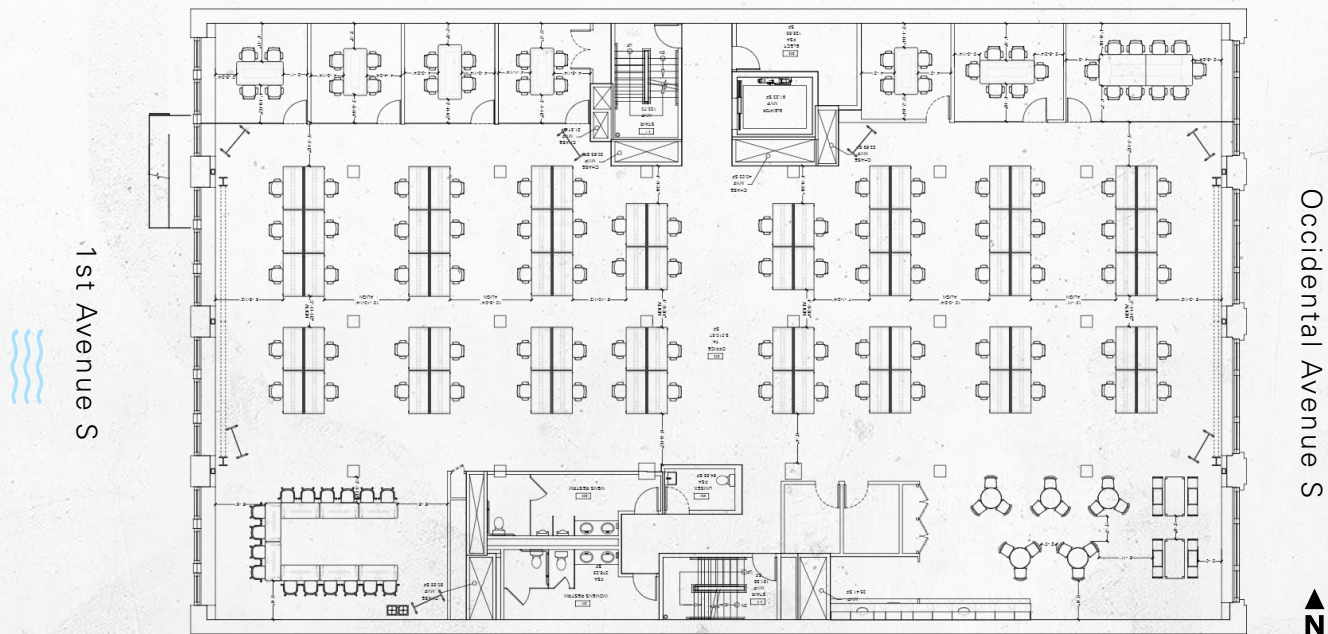


CURRENT AVAILABILITIES

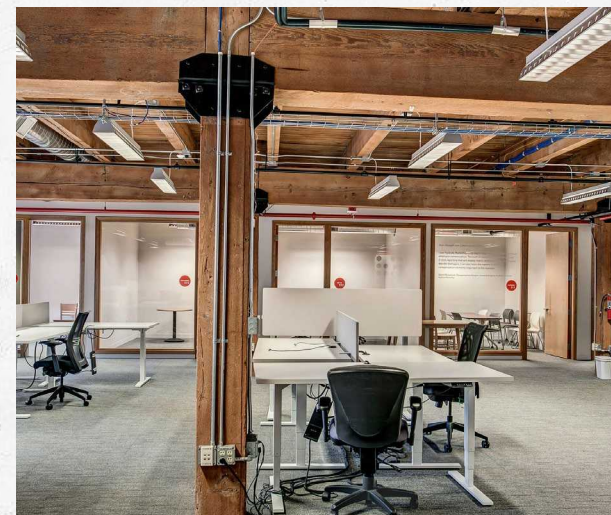
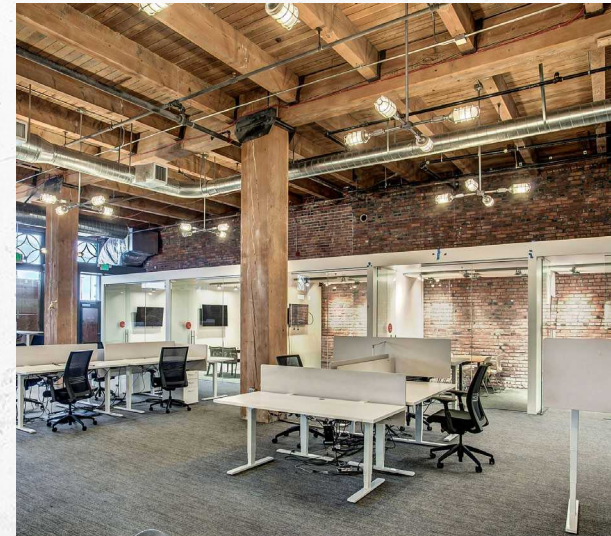
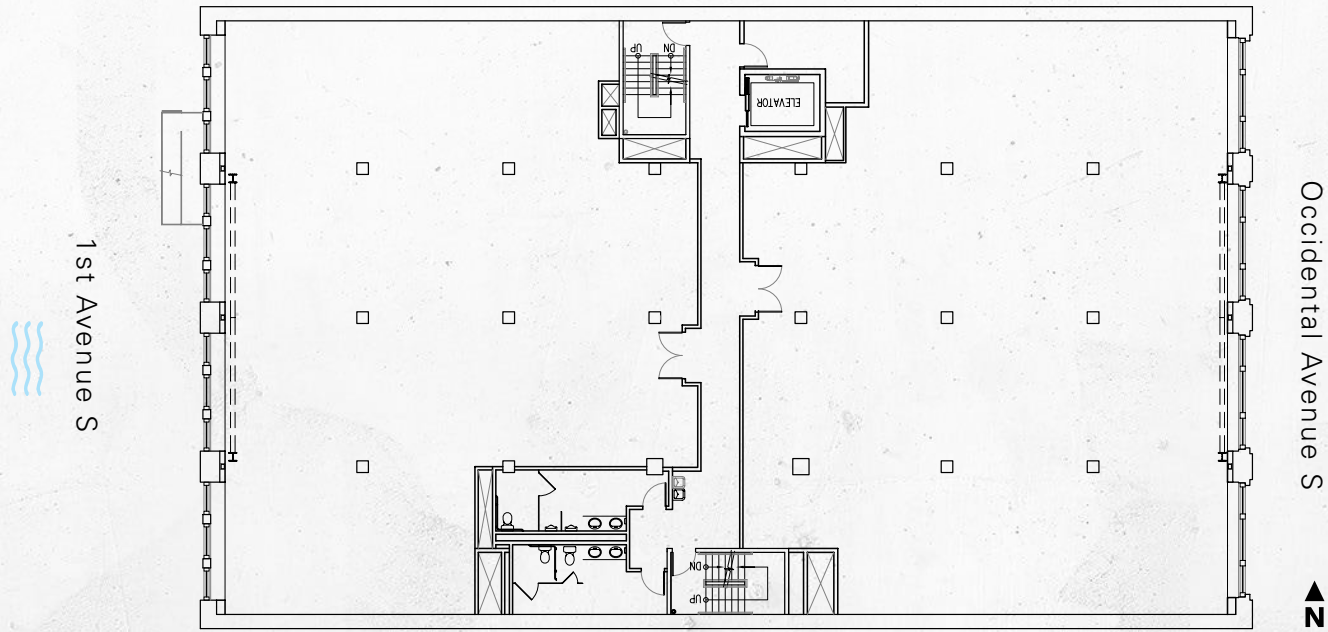
Suite	Size	
Floor 3	10,037 RSF	Virtual Tour
Floor 5	10,037 RSF	Virtual Tour
Floor 6	10,037 RSF	



EXAMPLE CURRENT FURNITURE LAYOUT



EXAMPLE DEMISING PLAN

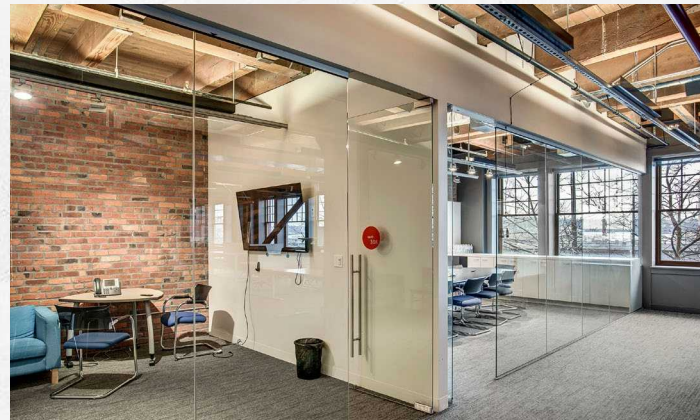
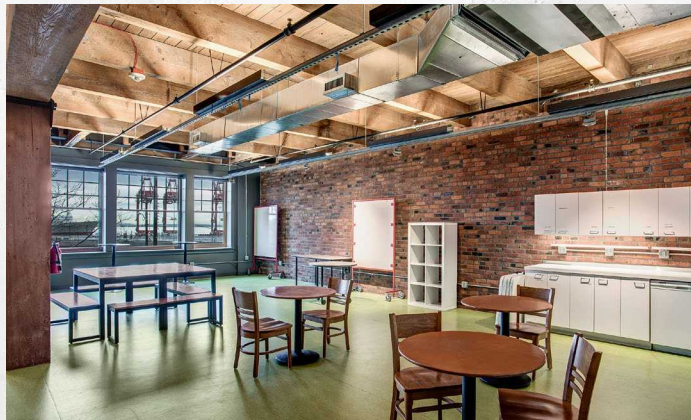
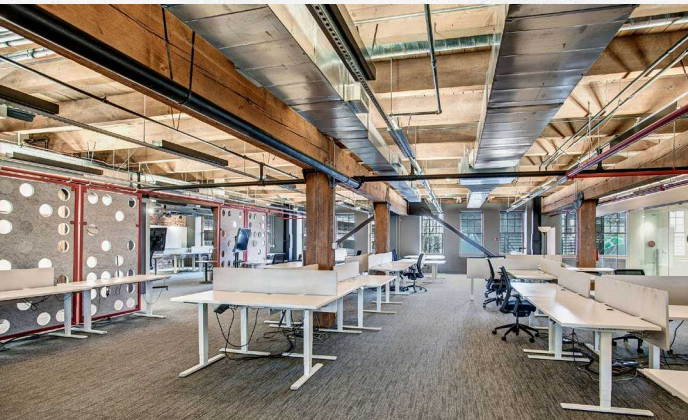
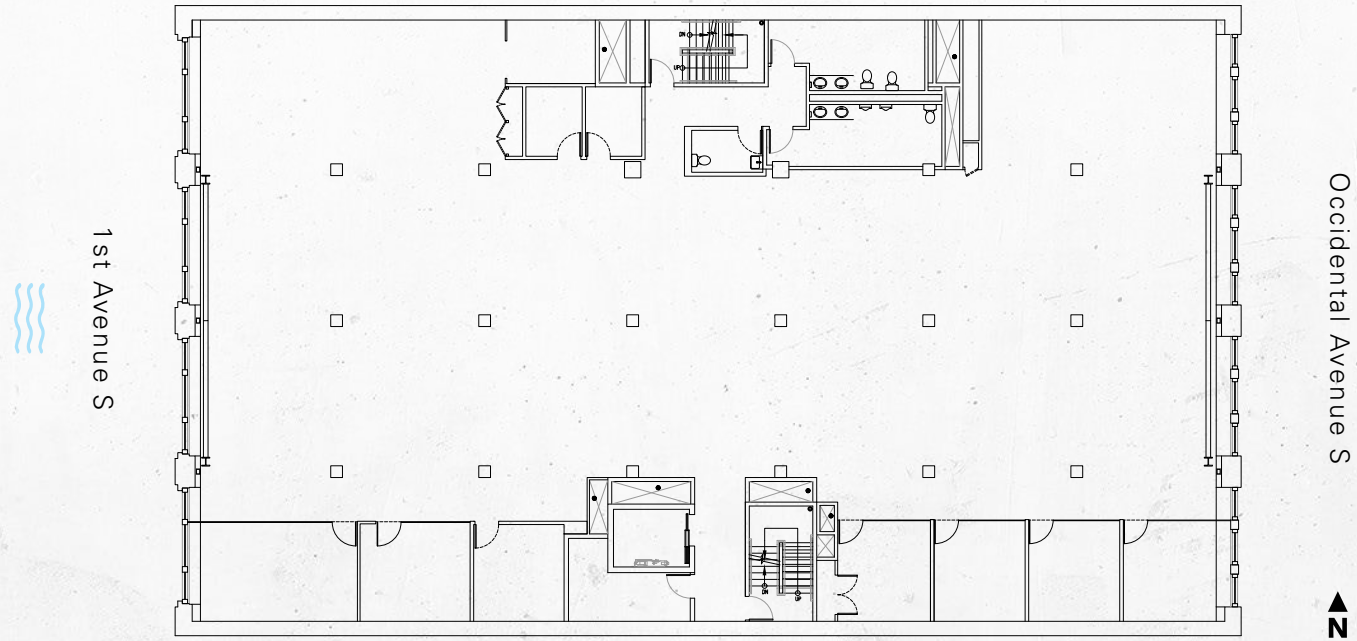


FLOOR 3

10,037 RSF

(Div. to 4,775 RSF)

Virtual Tour



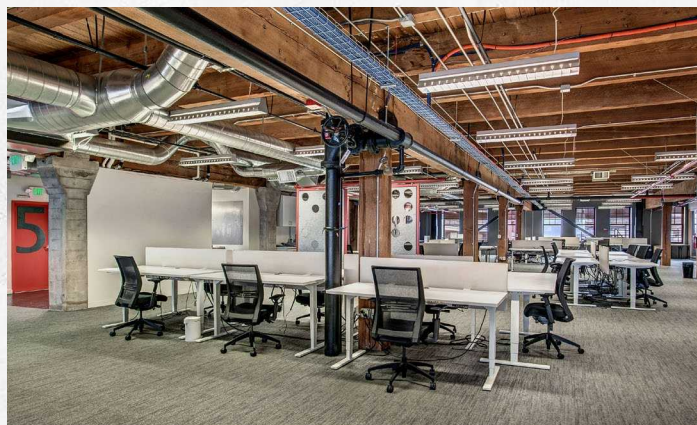
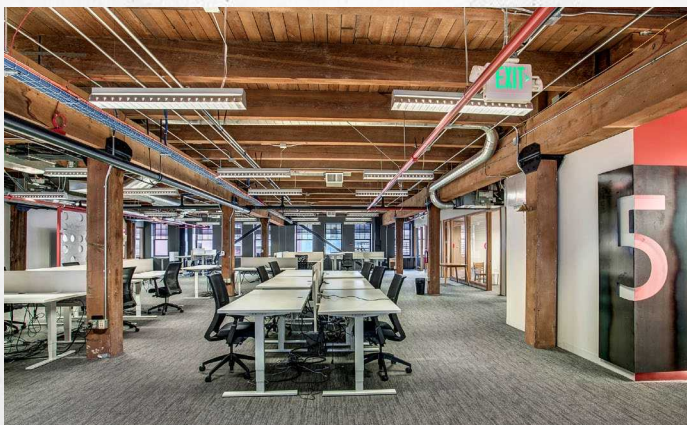
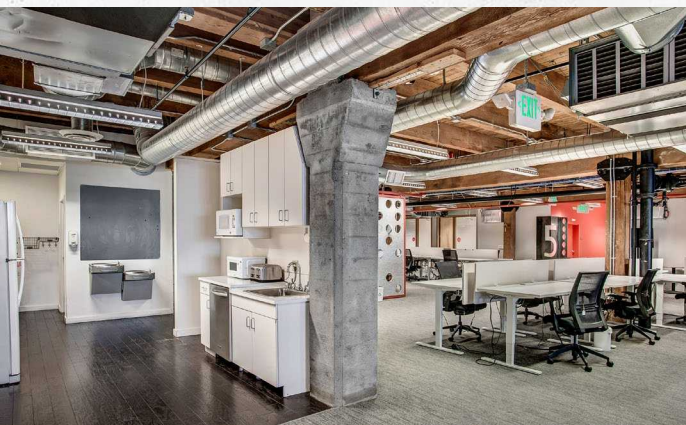
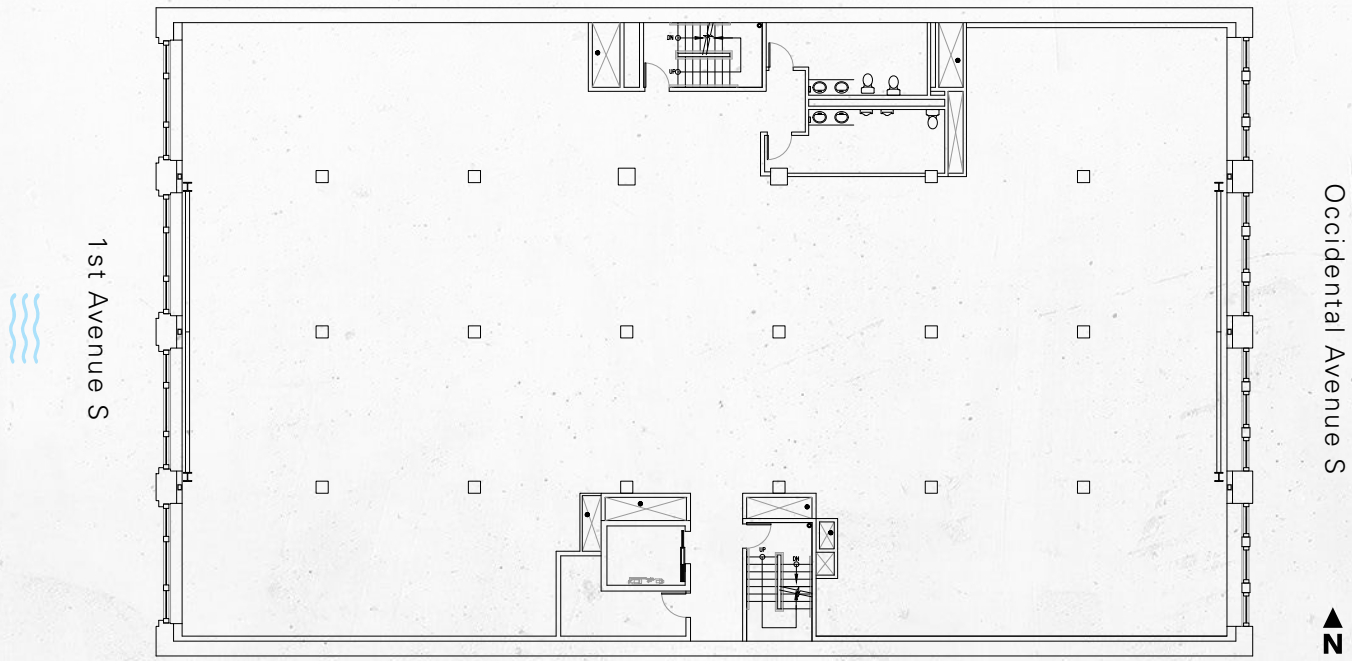
FLOOR 5

10,037 RSF

(Div. to 4,712 RSF)



Virtual Tour

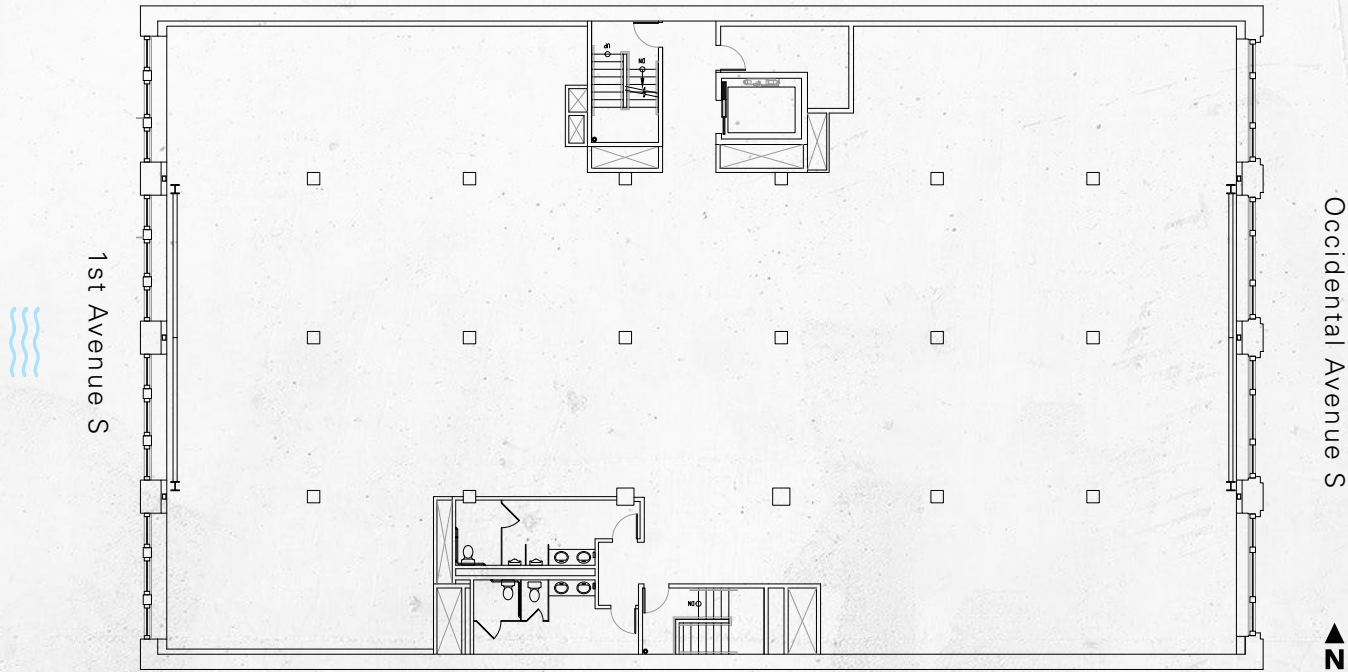


FLOOR 6

10,037 RSF

(Div. to 4,694 RSF)

Available January 1, 2023





THE NEIGHBORHOOD

1 block

from T-Mobile Park Stadium and adjacent to Seattle Lumen Field Stadium

1 block

from the future Seattle Waterfront

1 block

from Union Station

5 blocks

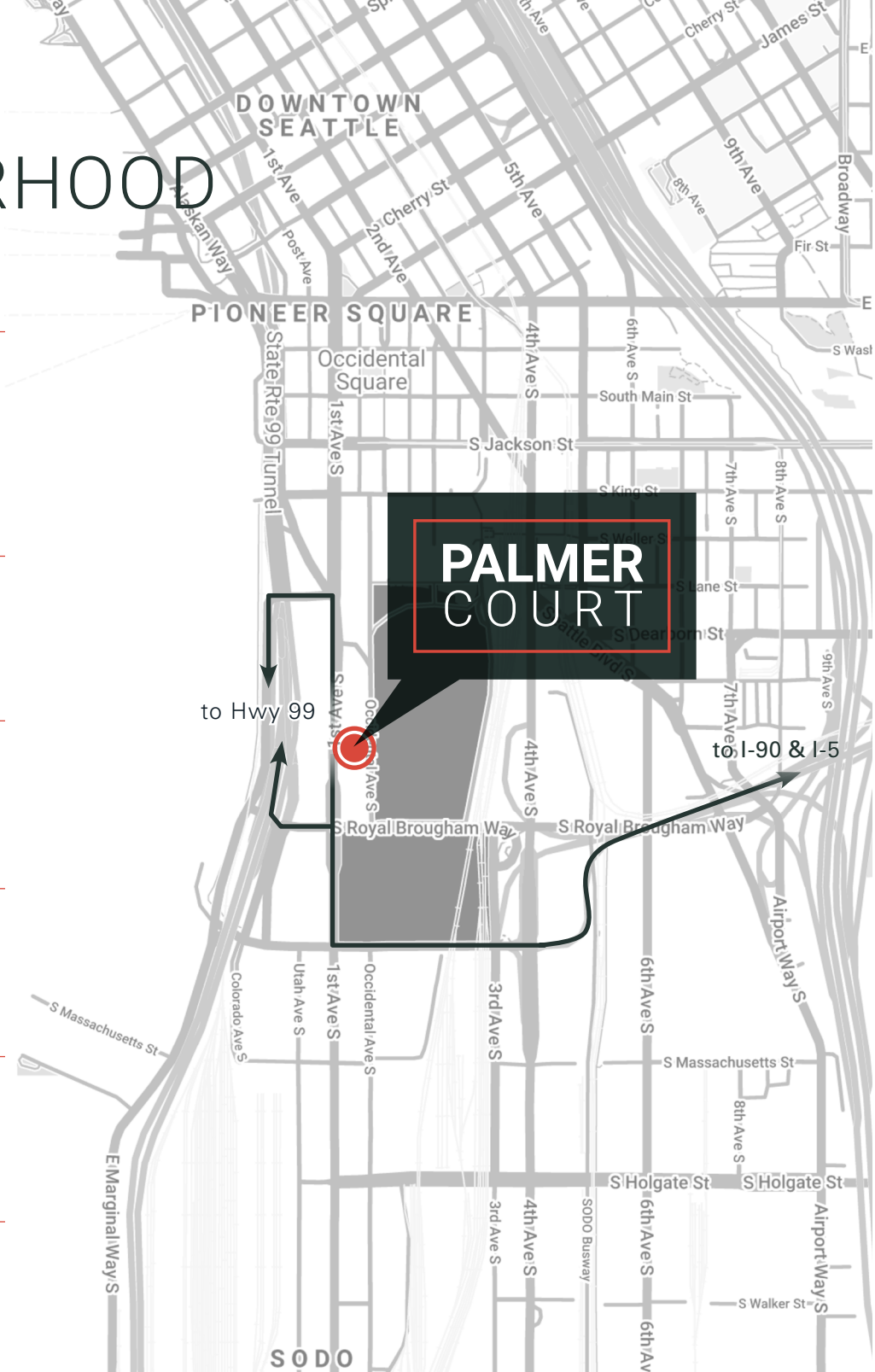
to I-5 and I-90 access points

6 blocks

from Pioneer Square amenities

20+

restaurants, coffee shops and retail amenities within a 5 minute walk



PALMER COURT

1000 1st Ave S. Seattle, WA 98134

Cavan O'Keefe

t 206-395-2903
cavan.okeefe@nmrk.com

Jesse Ottele

t 206-452-4529
jesse.ottele@nmrk.com

The distributor of this communication is performing acts for which a real estate license is required. The information contained herein has been obtained from sources deemed reliable but has not been verified and no guarantee, warranty or representation, either express or implied, is made with respect to such information. Terms of sale or lease and availability are subject to change or withdrawal without notice.

NEWMARK