



Yard with Office For Sublease

20417 87th Ave SE • Snohomish, WA 98296



11225 SE 6th St., Suite 240
Bellevue, WA 98004
www.colliers.com

Talor Okada
425 492 5145
talor.okada@colliers.com

Rich Sander
360 981 2543
rich.sander@colliers.com

Liam O'Kelley
425 519 2451
liam.okelley@colliers.com

**For
Lease**

20417 87th Ave SE • Snohomish, WA 98296

Property Highlights:

±66,210 SF yard (1.70 acres gross area) with ±2,614 SF Office

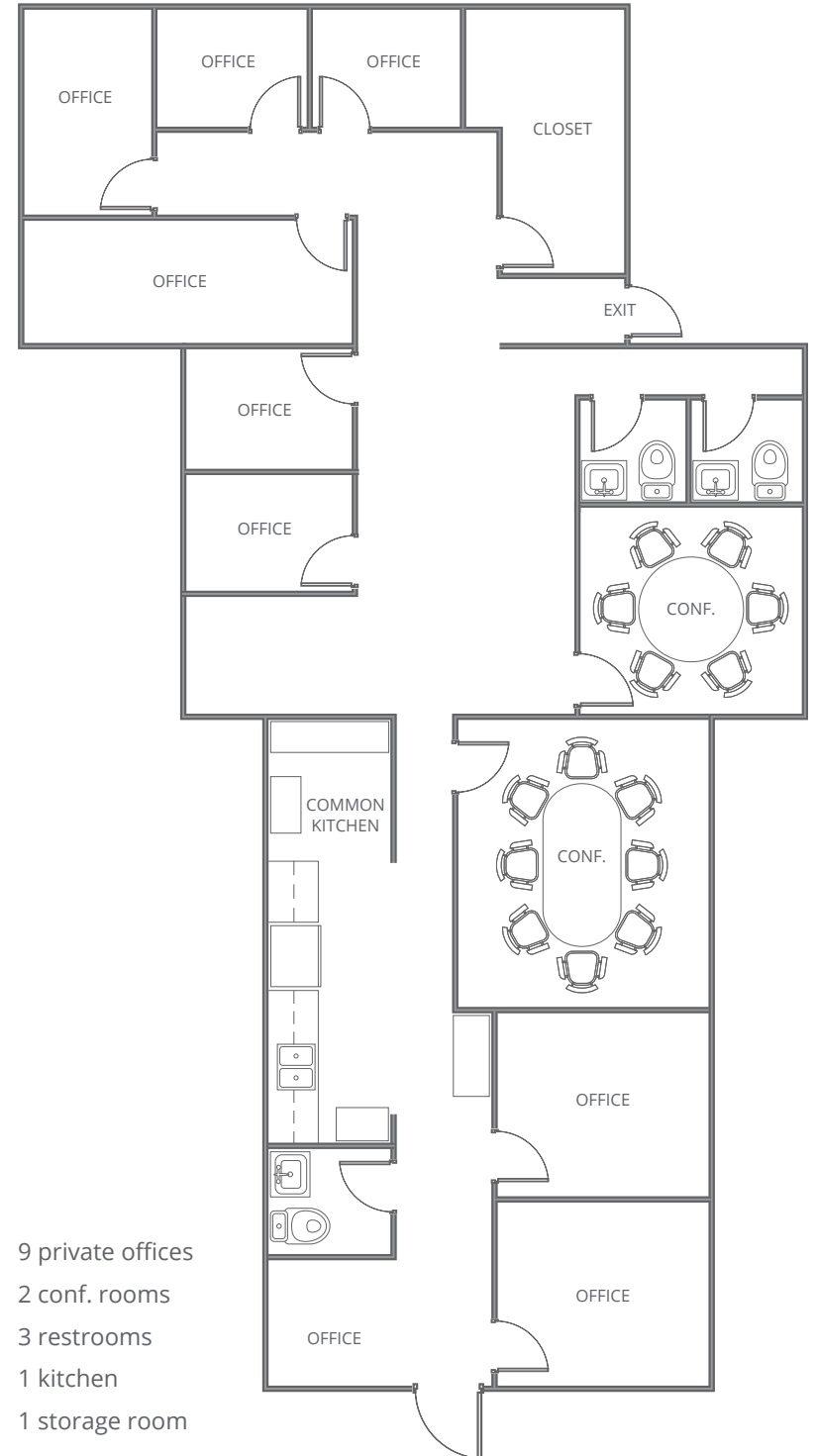
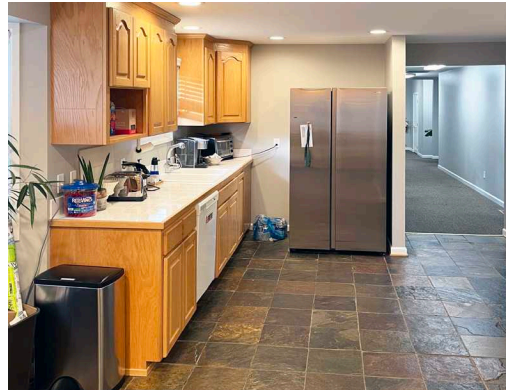
- Office includes 9 private offices, 2 conference rooms, 3 restrooms, 1 shower, and a full kitchen
- Fully fenced and graveled, potential for storage containers to be available for Subtenant use
- Ample parking available in addition to yard, on west portion of Property fronting 87th Ave SE
- Easy access to SR-522, I-405, and Hwy-9
- Zoning: Industrial Park (Snohomish County)
- **Call Broker's For Asking Rate**
- **Available with 30-60 days' notice**
- **Sublease thru January 1, 2030**



For
Lease

20417 87th Ave SE • Snohomish, WA 98296

Office Photos & Floor Plan

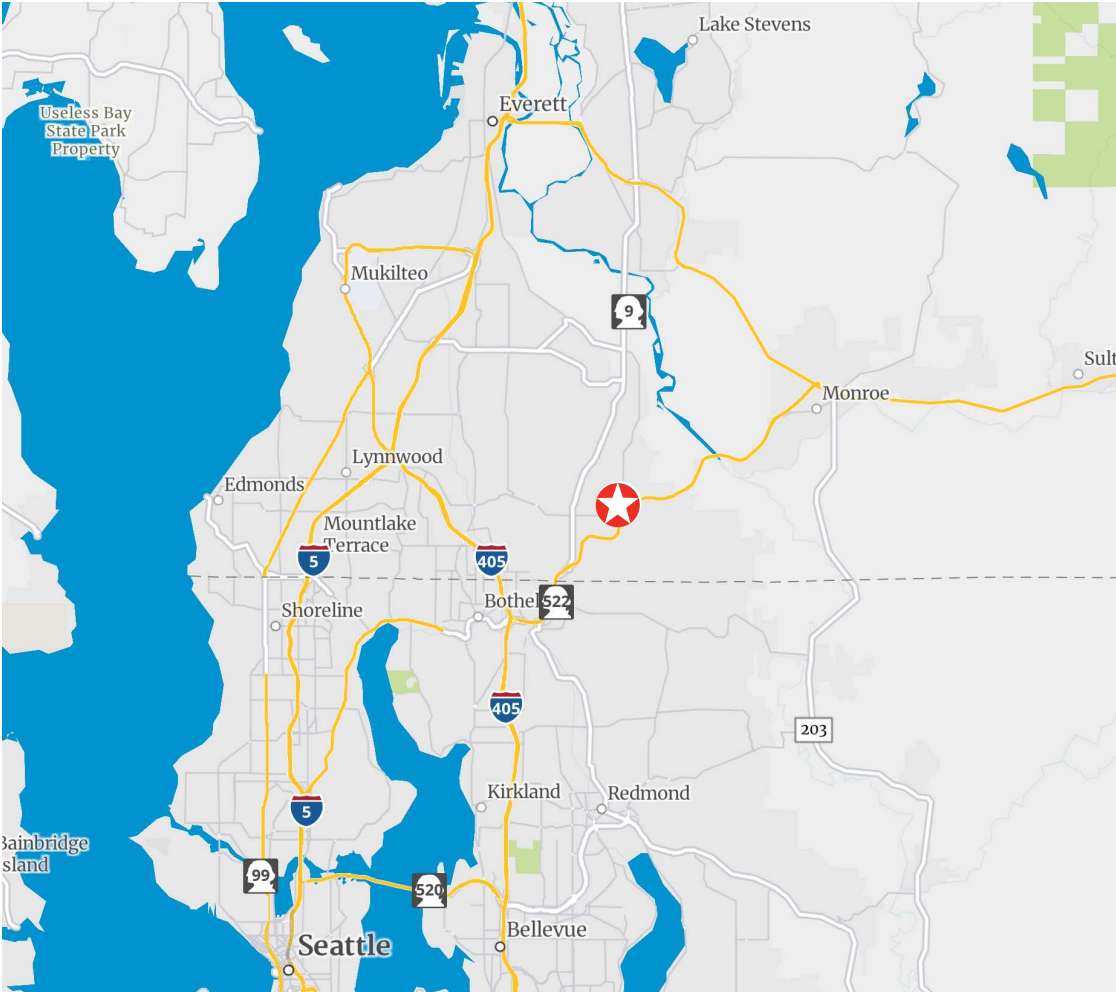


- 9 private offices
- 2 conf. rooms
- 3 restrooms
- 1 kitchen
- 1 storage room

**For
Lease**

20417 87th Ave SE • Snohomish, WA 98296

Regional Map



TRAVEL TIME TO

Everett	15 miles 25 minutes
Paine Field Airport	15 miles 30-35 minutes
Redmond	13 miles 25-30 minutes
Bellevue	18 miles 30 minutes
Port of Seattle	25 miles 45-55 minutes
SeaTac Airport	33 miles 35-55 minutes



11225 SE 6th St., Suite 240
Bellevue, WA 98004
www.colliers.com

Talor Okada
425 492 5145
talor.okada@colliers.com

Rich Sander
360 981 2543
rich.sander@colliers.com

Liam O'Kelley
425 519 2451
liam.okelley@colliers.com