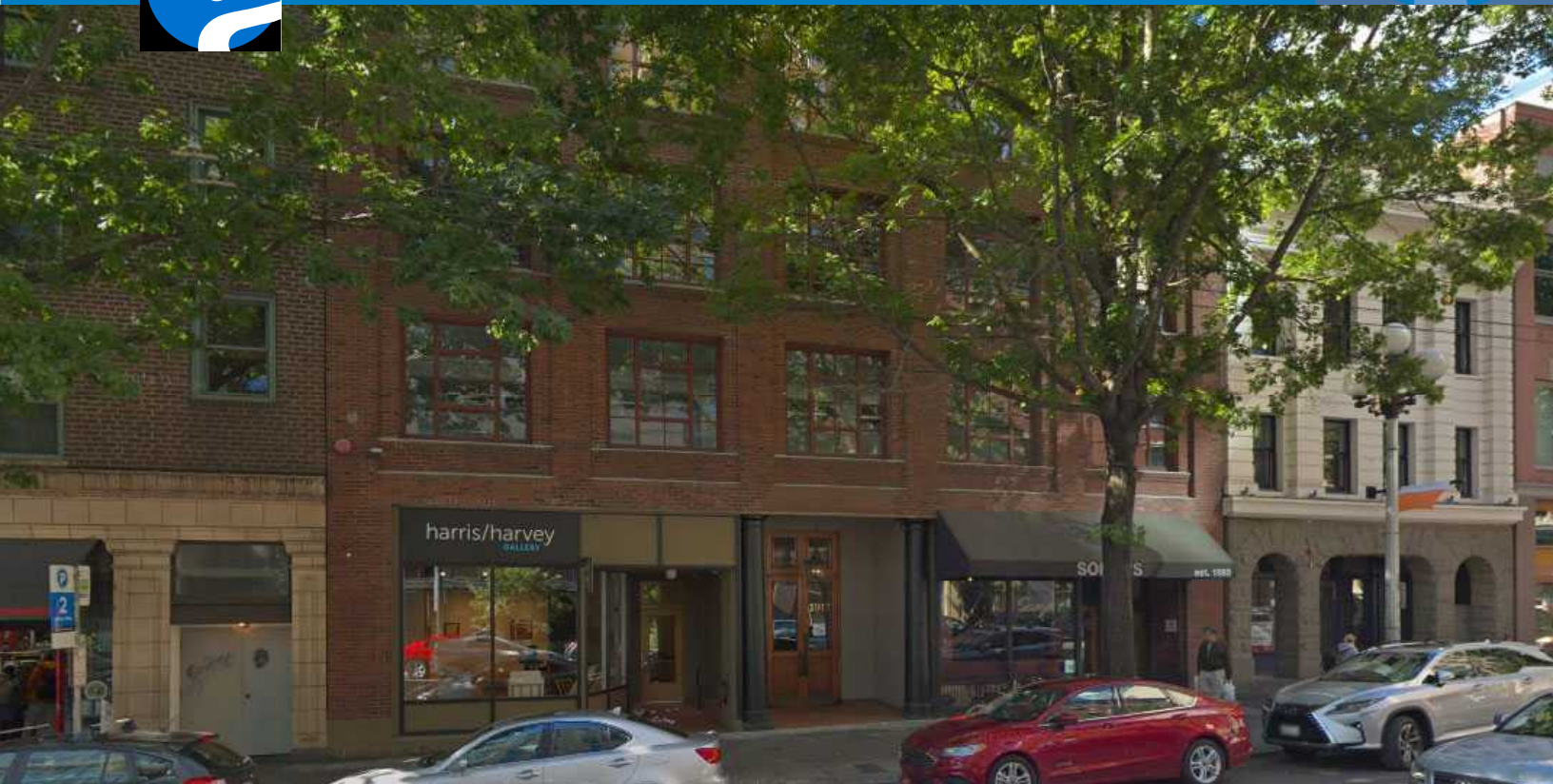




ALASKA TRADE BUILDING

1917 1ST AVENUE, SEATTLE WASHINGTON

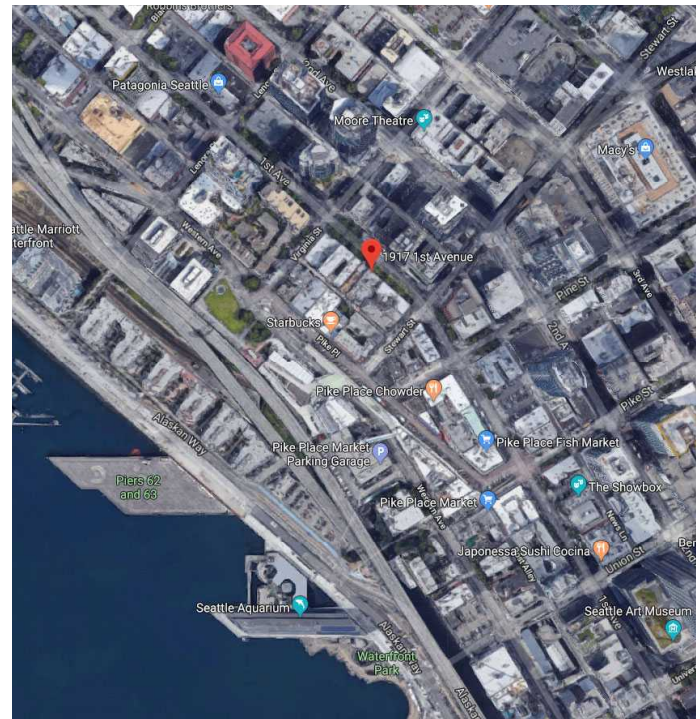


FEATURES

- Prime Location next to Pike Place Market.
- Entire TOP FLOOR with direct elevator access into suite.
- Private rooftop area with secured access and water views.
- Open floor plan with private offices, 2 restrooms, kitchen area, and conference room.
- Very secure and controlled main entrance including security cameras and Key FOBs.
- Amazing design features- wood beams, exposed brick, large windows, etc.
- Secure bike storage and locker rooms w/shower located on A level.
- Walking distance to several amenities and restaurants

LEASE INFORMATION

Lease Type	<i>NNN (\$14.61/SF)</i>
Availability	<i>Available Immediately</i>
Rent	<i>\$28.00/SF</i>
Space Available	
<i>Suite 400</i>	<i>3,031 SF</i>



JAY AZOSE

425.974.4203
206.650.4100
jazose@azose.com

MICHAEL AZOSE

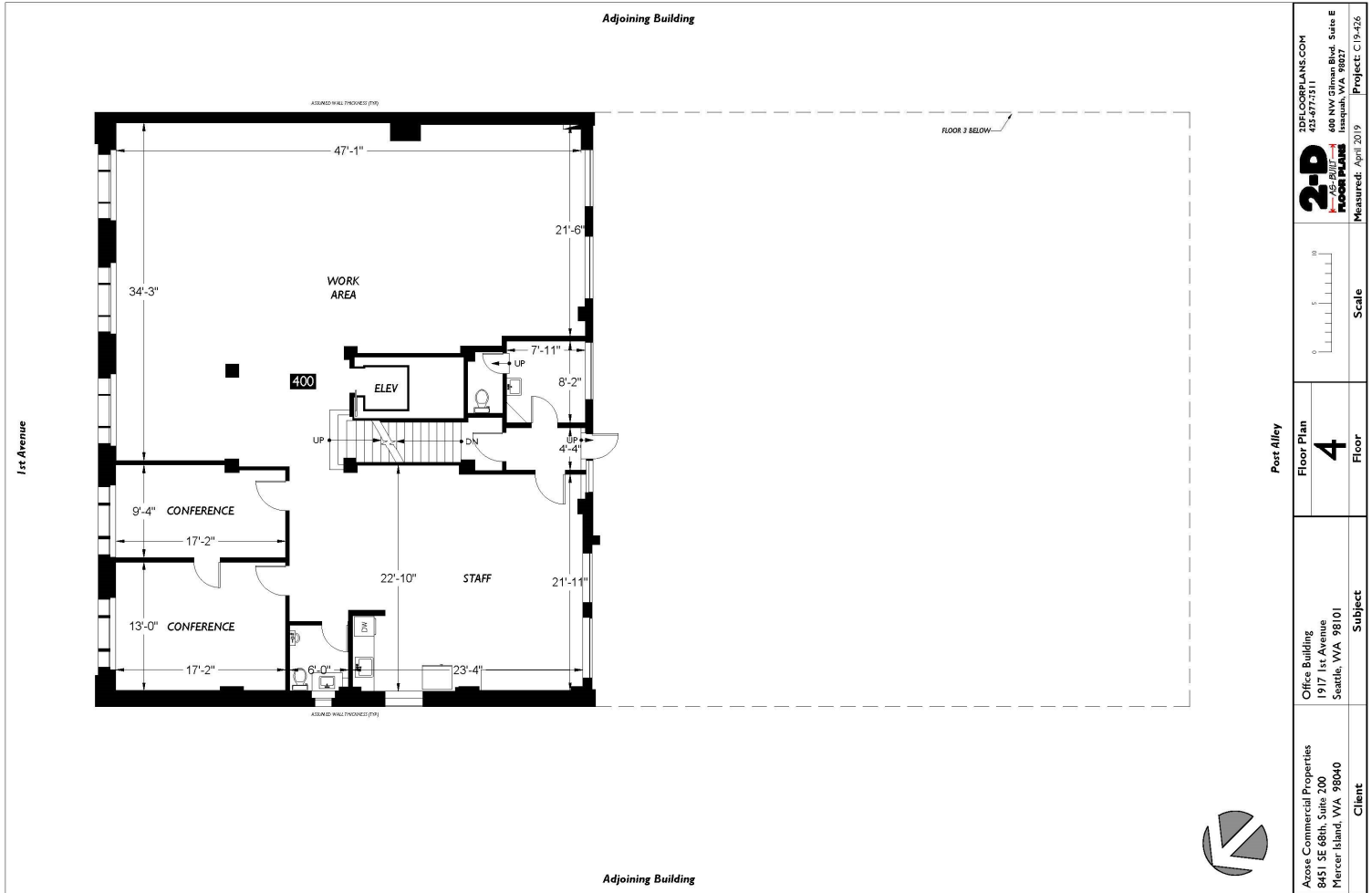
425.974.4236
206.856.7576
mazose@azose.com



MARK O'SHEA

425.974.4201
425.922.5468
moshea@azose.com

8451 SE 68TH ST., STE 200
MERCER ISLAND, WA 98040
425.643.8400
WWW.AZOSE.COM



1ST FLOOR PLANS.COM 202-477-7371 2-D 2-D FLOOR PLANS 600 NW 57th Ave, Suite E Seattle, WA 98107 Measured: April 2019 Project: C19-426	
Scale 0 5 10	Floor Plan 4 Floor
Client Azose Commercial Properties 8451 SE 68th, Suite 200 Mercer Island, WA 98040	Subject Office Building 1917 1st Avenue Seattle, WA 98101



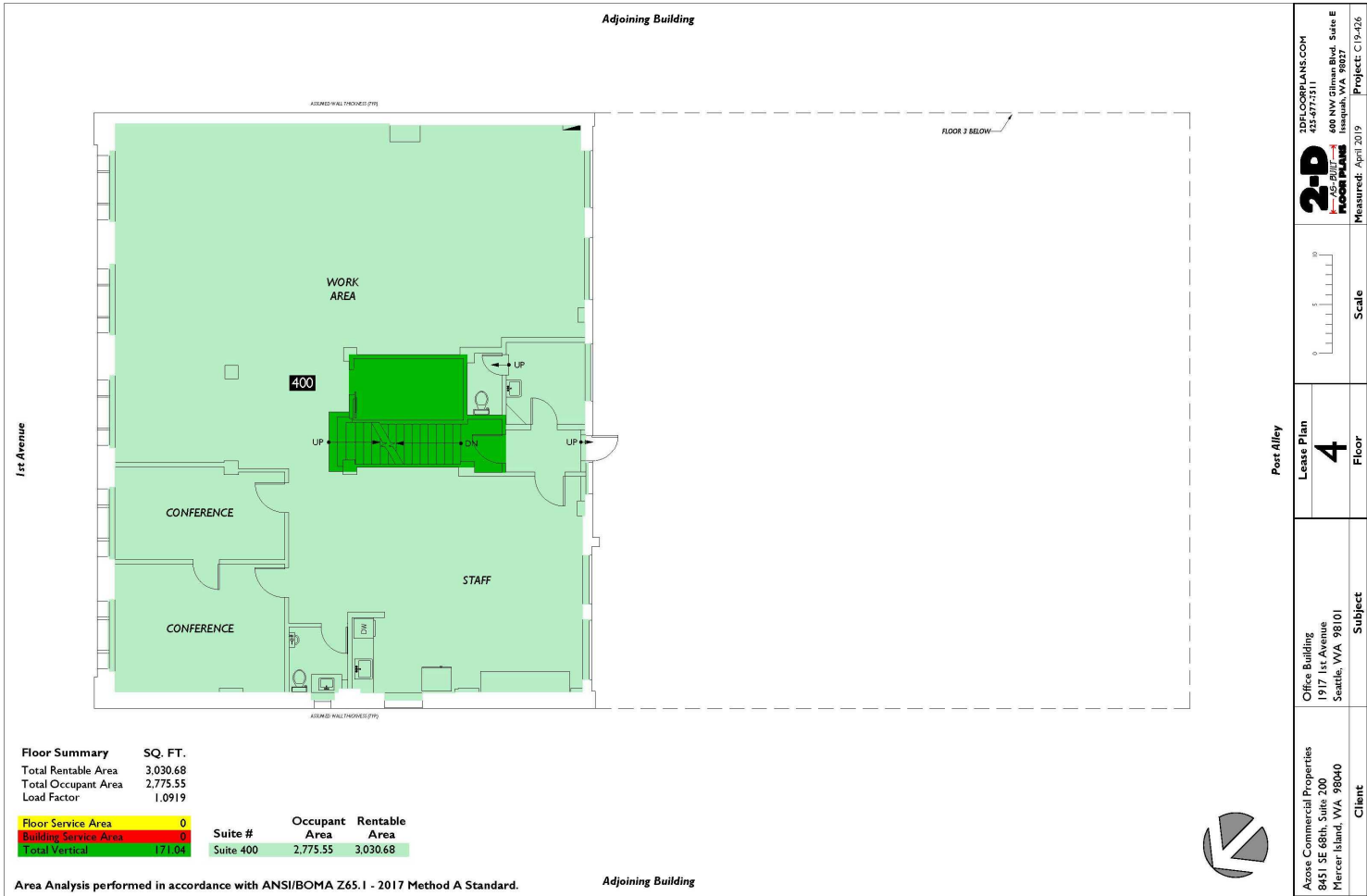
JAY AZOSE
 425.974.4203
 206.650.4100
 jazose@azose.com

MICHAEL AZOSE
 425.974.4236
 206.856.7576
 mazose@azose.com



MARK O'SHEA
 425.974.4201
 425.922.5468
 moshea@azose.com

8451 SE 68TH ST., STE 200
 MERCER ISLAND, WA 98040
 425.643.8400
 WWW.AZOSE.COM



JAY AZOSE
425.974.4203
206.650.4100
jazose@azose.com

MICHAEL AZOSE
425.974.4236
206.856.7576
mazose@azose.com



MARK O'SHEA
425.974.4201
425.922.5468
moshea@azose.com

8451 SE 68TH ST., STE 200
MERCER ISLAND, WA 98040
425.643.8400
WWW.AZOSE.COM