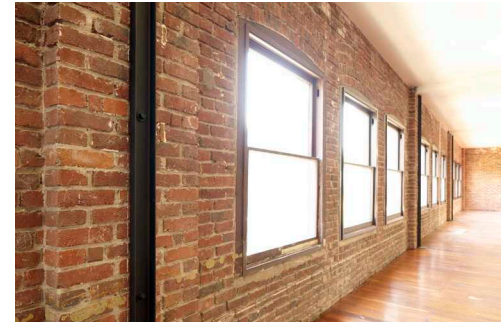


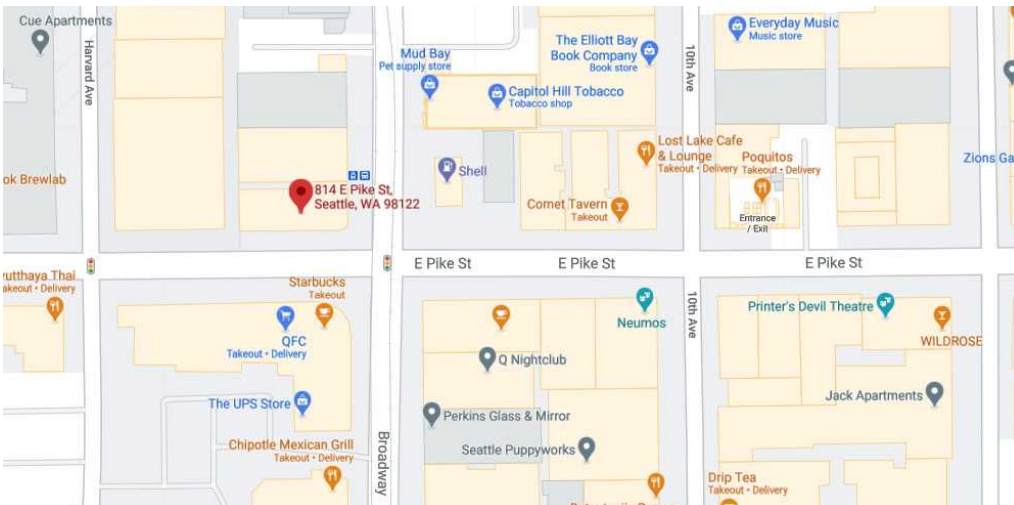
FOR LEASE

CREATIVE OFFICE SPACE | PIKE/PINE CORRIDOR
814 EAST PIKE STREET | SEATTLE, 98122



PROPERTY FEATURES

- Rare Capitol Hill office vacancy in classic Pike/Pine renovated building
- Private gated entryway with lobby and elevator access
- High ceilings, skylights, exposed timber floors and beams, and exposed brick throughout
- Restrooms and kitchenette in space
- Separate walk-up entry
- Size: 4,233 sf
- Rate: \$25.00/sf/yr + NNN (\$8.96/sf/yr) estimated for 2024
- Available now, please contact brokers for more information



EWING & CLARK
INCORPORATED

**CAMERON
KENT**

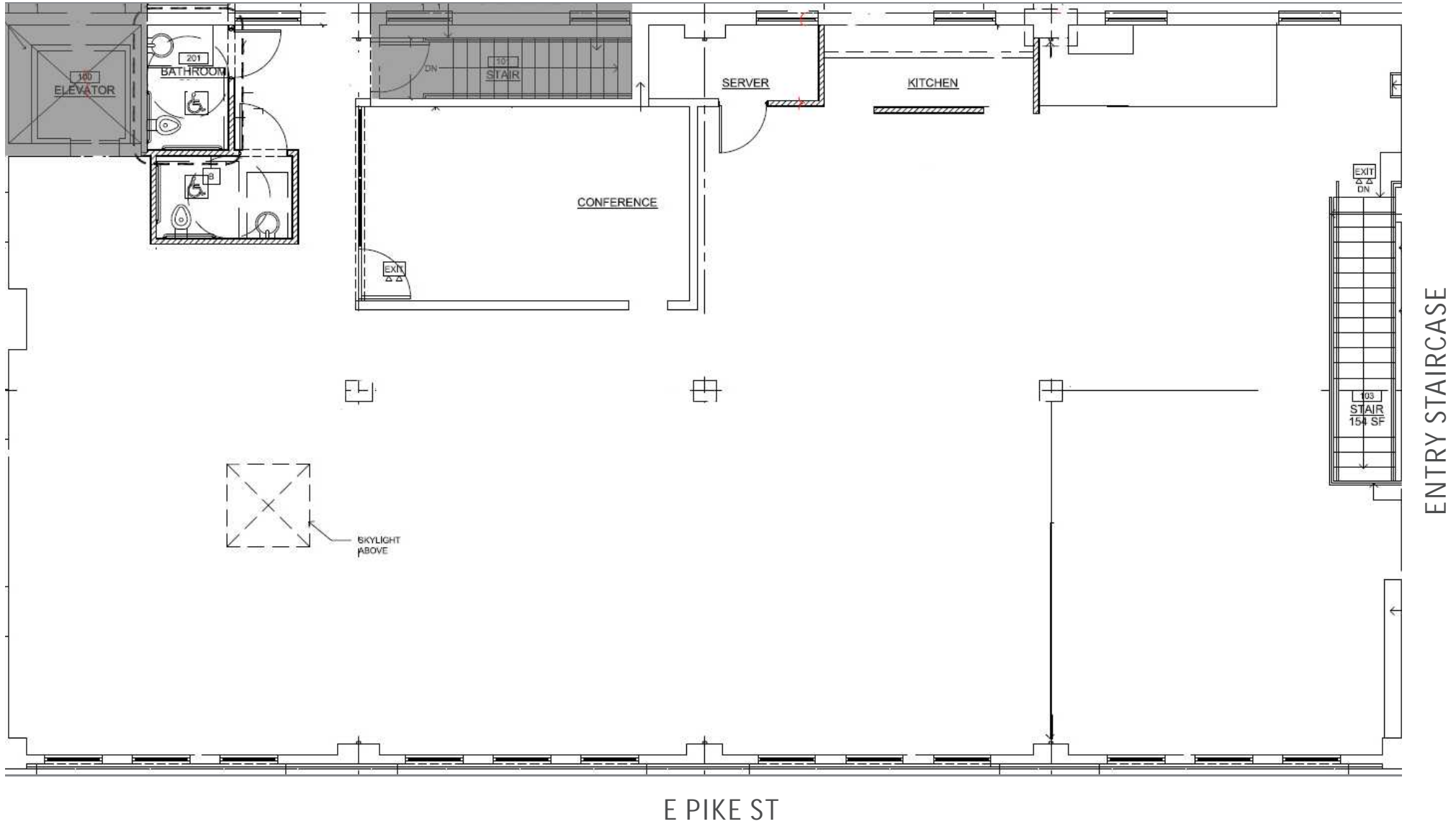
206.838.7737
ckent@ewingandclark.com

**TOM
GRAFF**

206.295.1445
tomgraff@ewingandclark.com

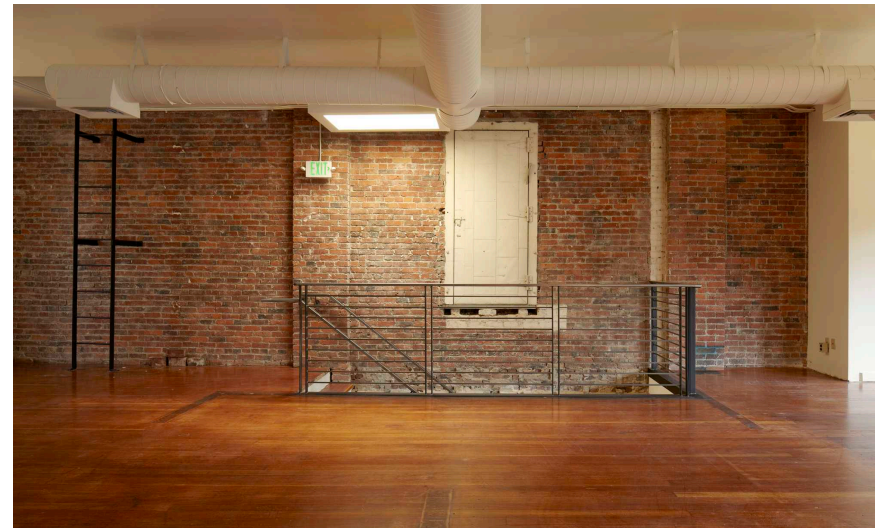
FLOOR PLAN

814 EAST PIKE STREET | SEATTLE, 98122



PHOTOS

814 EAST PIKE STREET | SEATTLE, 98122



**CAMERON
KENT**

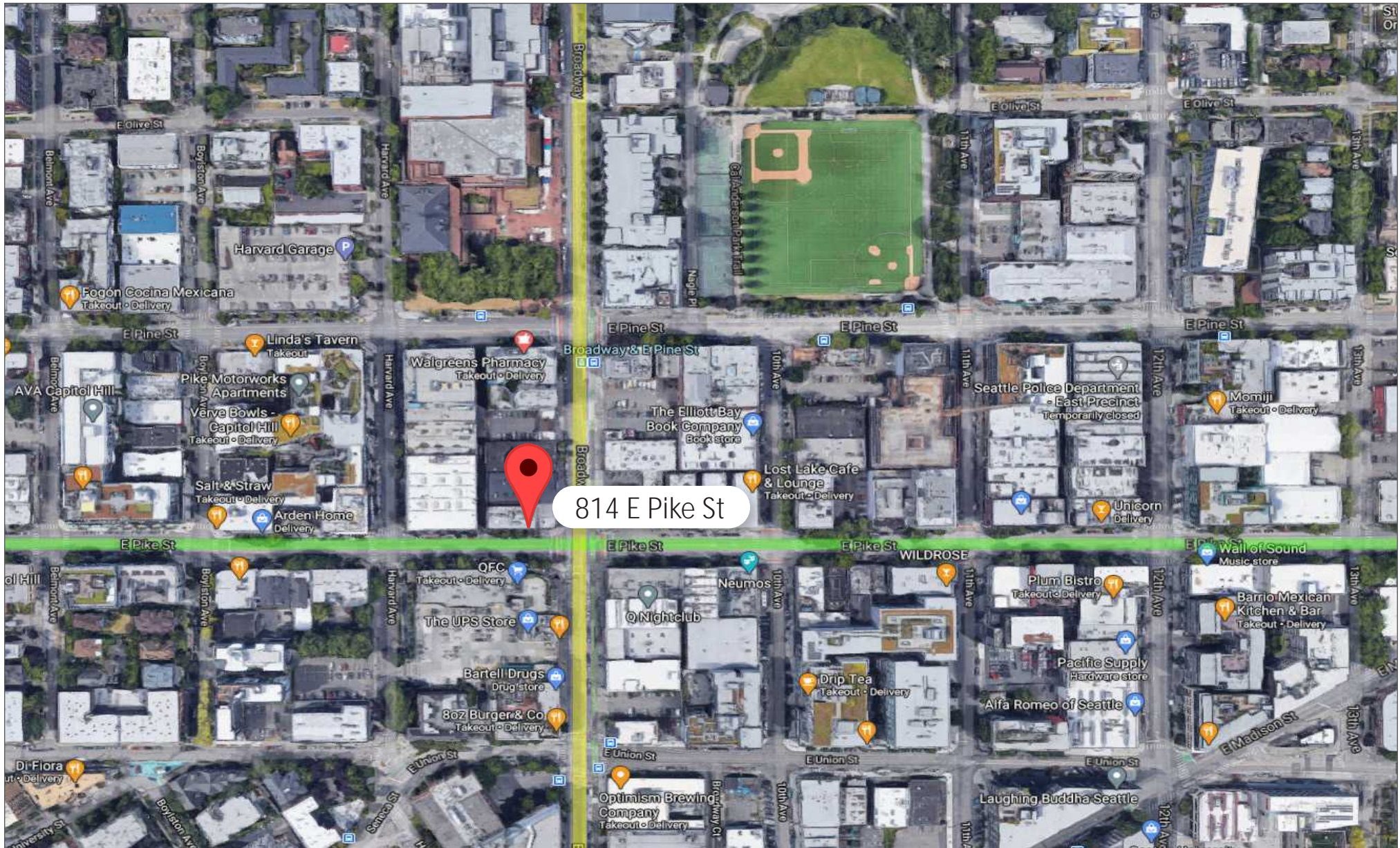
206.838.7737
ckent@ewingandclark.com

**TOM
GRAFF**

206.295.1445
tomgraff@ewingandclark.com

AERIAL MAP

814 EAST PIKE STREET | SEATTLE, 98122



EWING & CLARK
INCORPORATED

CAMERON
KENT

206.838.7737
ckent@ewingandclark.com

TOM
GRAFF

206.295.1445
tomgraff@ewingandclark.com