



EPICENTER RETAIL

PCC-Anchored Restaurant and Retail Spaces Available in Fremont

JOHN CHELICO
425.450.2261
john.chelico@kidder.com

JOIN CURRENT TENANTS

*Second Generation Restaurant/
Coffee Shop Spaces Available for
Lease in Fremont*

Former Starbucks and former MOD Pizza retail spaces with outdoor patios and mezzanine dining areas

Co-tenants include PCC Community Markets, ZoomCare, Pho Than Brothers, and 130+ apartments above

Located near numerous amenities and major employers, including Adobe and PATH

Garage parking available for all retail tenants

2,580 SF

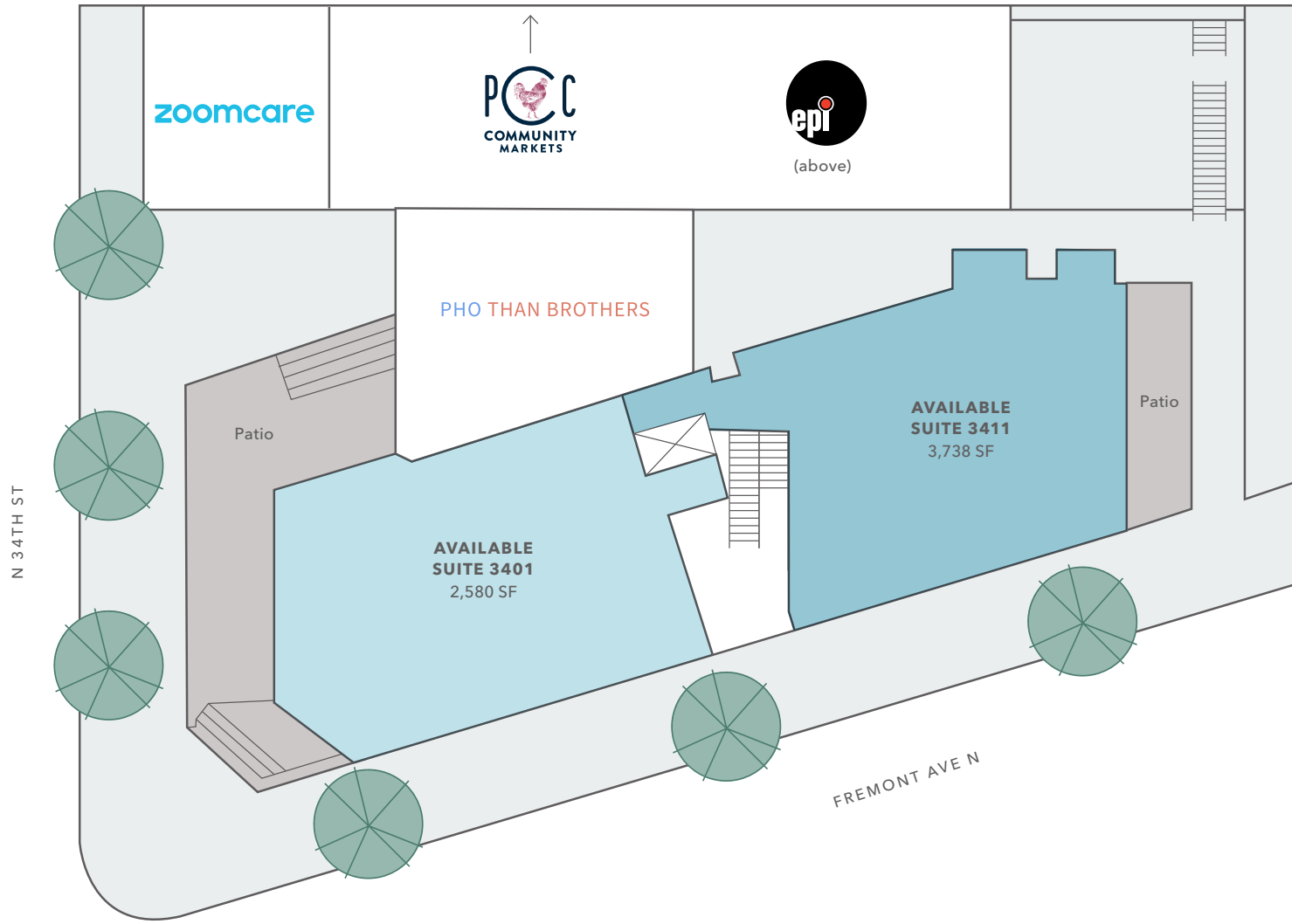
3401 FREMONT AVE N

3,738 SF

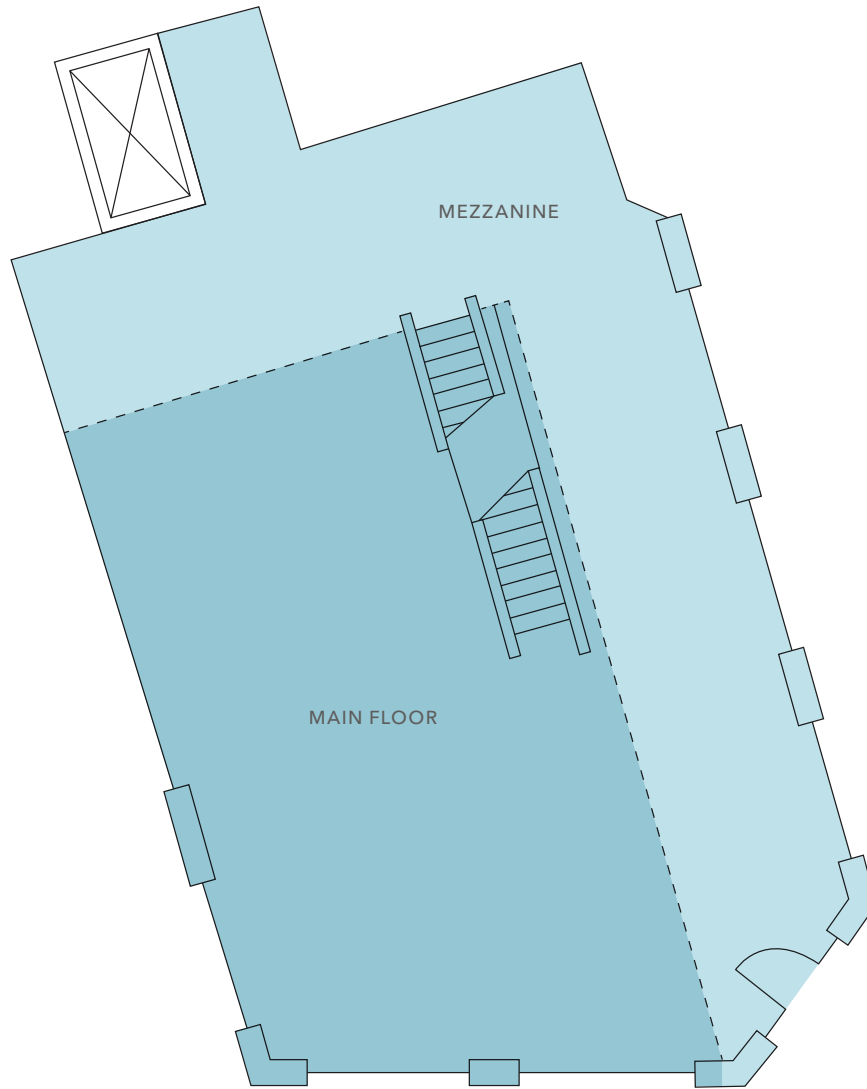
3411 FREMONT AVE N



SITE PLAN



SUITE 3401 FLOOR PLAN



1,693 SF

MAIN FLOOR

887 SF

MEZZANINE

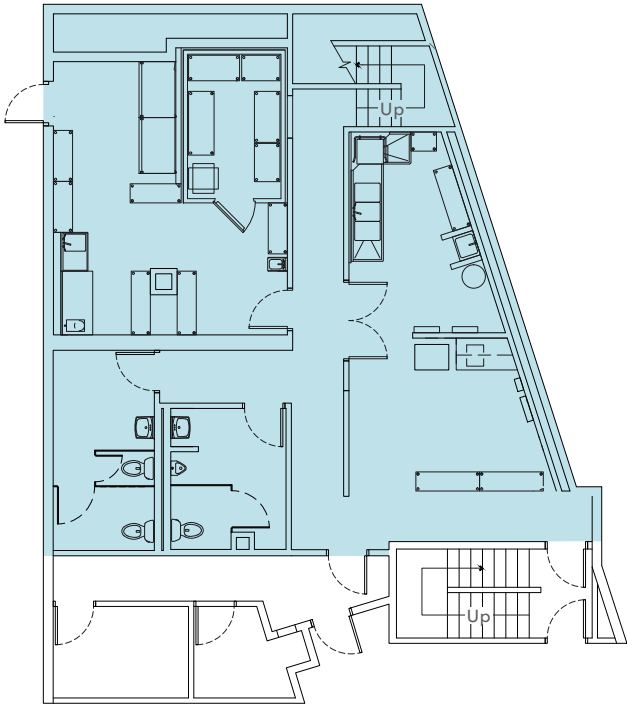
Includes elevator and 500 SF patio.



SUITE 3411 FLOOR PLAN

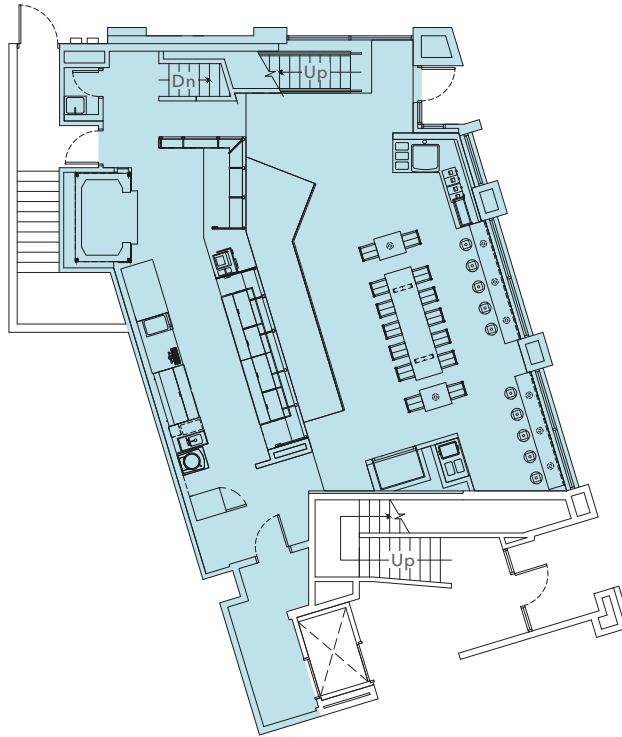
1,409 SF

LOWER LEVEL | KITCHEN/RESTROOMS



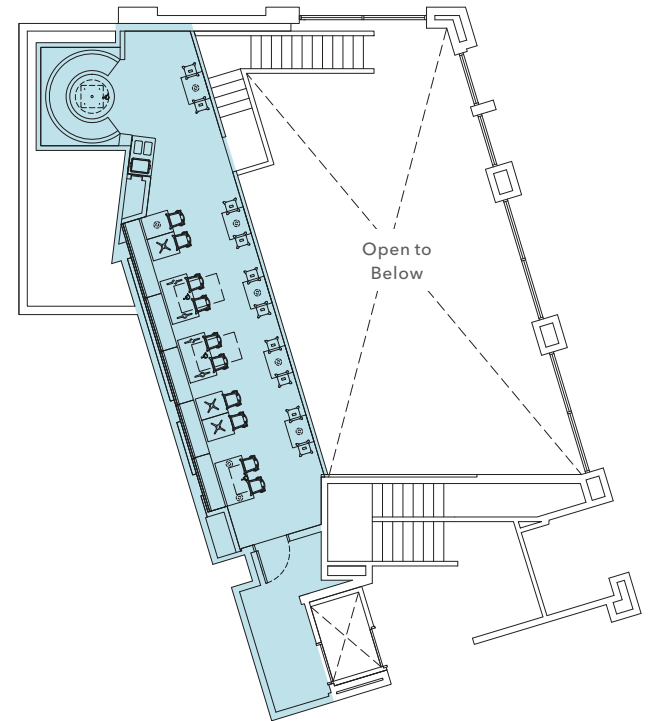
1,690 SF

STREET LEVEL | DINING/KITCHEN



639 SF

MEZZANINE | DINING



Includes elevator and 250 SF patio.

EPICENTER RETAIL



EPICENTER RETAIL





EPICENTER RETAIL

*For more information on
this property, please contact*

JOHN CHELICO
425.450.2261
john.chelico@kidder.com

KIDDER.COM

This information supplied herein is from sources we deem reliable. It is provided without any representation, warranty, or guarantee, expressed or implied as to its accuracy. Prospective Buyer or Tenant should conduct an independent investigation and verification of all matters deemed to be material, including, but not limited to, statements of income and expenses. Consult your attorney, accountant, or other professional advisor.

km Kidder
Mathews