



THE
RANTSGROUP
COMMERCIAL REAL ESTATE

FOR LEASE

MEDICAL OFFICE SPACE NEAR MULTICARE CAPITAL MEDICAL CENTER



410 BLACK HILLS LANE SW, OLYMPIA, WA | BLACK HILLS MEDICAL PARK

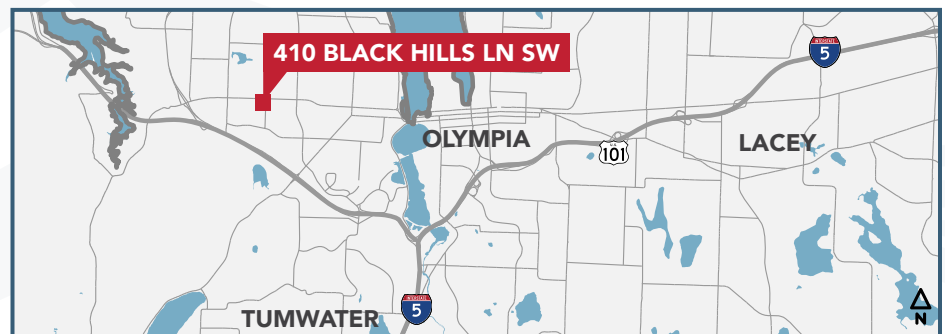
You, your patients, and your staff will enjoy this medical office space's peaceful, park-like setting, conveniently located adjacent to the Multi Care Capital Medical Center (107-bed community hospital).

SUITE C: Two private restrooms, a large reception & waiting area, three exam rooms, a lab area, break room, and large office.

\$23.00/SF, MODIFIED GROSS

1,503 SF

CBA# 10709643



HOSPITAL APPROVAL IS REQUIRED FOR ALL NEW TENANTS.

This information, while obtained from sources we deem reliable, is not guaranteed. It is provided without any representation, warranty or guarantee, expressed or implied as to its accuracy. Prospective buyer or tenant should conduct an independent investigation and verification of all matters deemed to be material, including, but not limited to, statements of income and expenses. Consult your attorney, accountant, or other professional advisor.



Ian Zarosinski
BROKER
360-800-5808
ian@rantsgroup.com

360-943-8060
RANTSGROUP.com

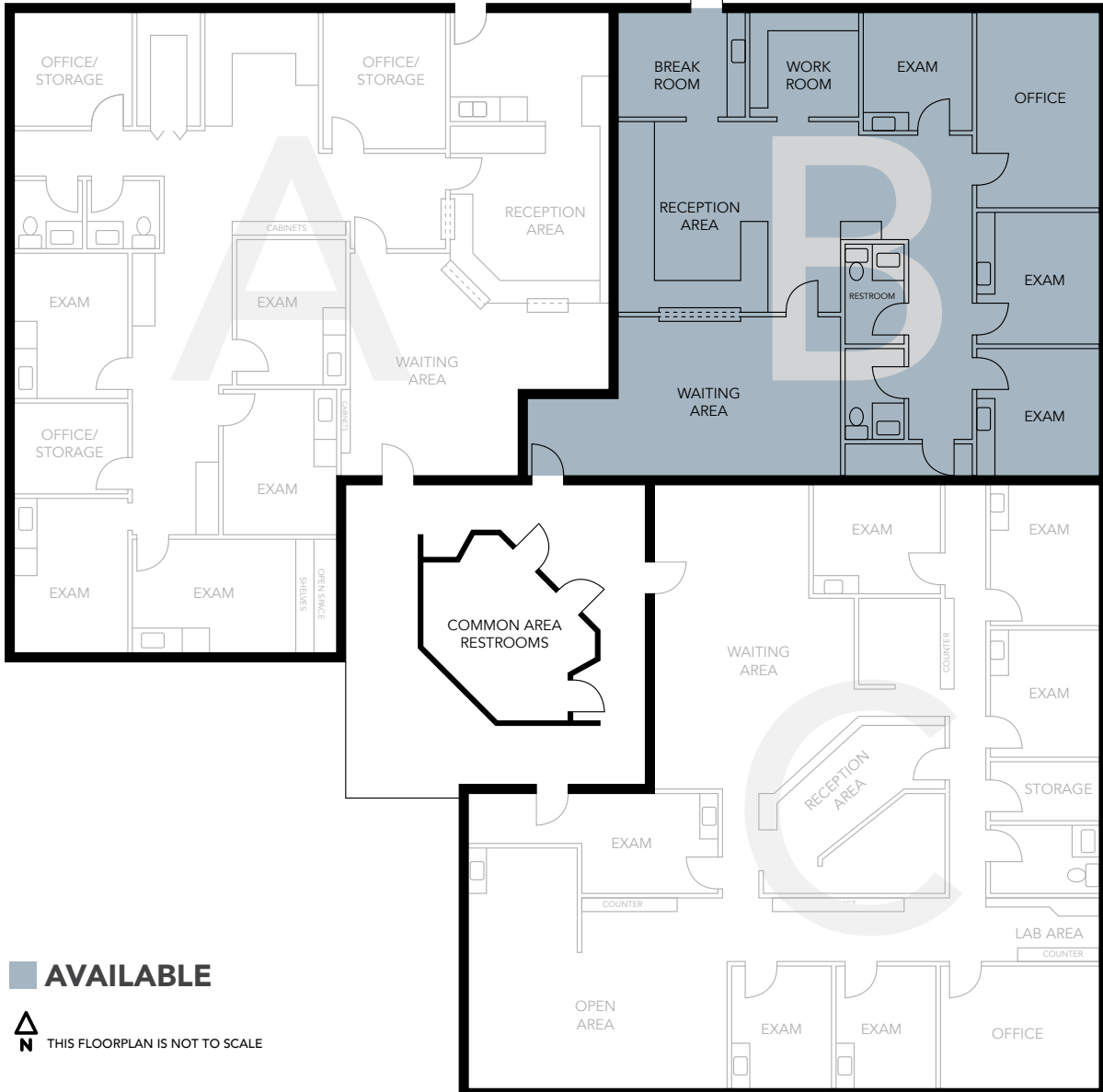
410 BLACK HILLS LANE SW, OLYMPIA, WA | BLACK HILLS MEDICAL PARK

SUITE B: ±1,503 SF



rants.group/BHMP410Bvt

SUITE A: LEASED



CONTACT

Ian Zarosinski
BROKER
360-800-5808
ian@rantsgroup.com

SUITE C: LEASED

410 BLACK HILLS LANE SW, OLYMPIA, WA | BLACK HILLS MEDICAL PARK



CONTACT

Ian Zarosinski
BROKER
360-800-5808
ian@rantsgroup.com



rantsgroup.com/BHMP410Bvt

This information, while obtained from sources we deem reliable, is not guaranteed. It is provided without any representation, warranty or guarantee, expressed or implied as to its accuracy. Prospective buyer or tenant should conduct an independent investigation and verification of all matters deemed to be material, including, but not limited to, statements of income and expenses. Consult your attorney, accountant, or other professional advisor.

360-943-8060 | RANTSGROUP.com