



FOR LEASE

Highline Medical Pavilion

16233 SYLVESTER ROAD SW, BURIEN, WA



Move-in ready medical space

BRIAN CLAPP
206.248.7316
brian.clapp@kidder.com

SPENCER CLAPP
206.248.7427
spencer.clapp@kidder.com

**Kidder
Mathews**

Building owned and managed by
HEALTHCARE REALTY

This information supplied herein is from sources we deem reliable. It is provided without any representation, warranty, or guarantee, expressed or implied as to its accuracy. Prospective Buyer or Tenant should conduct an independent investigation and verification of all matters deemed to be material, including, but not limited to, statements of income and expenses. Consult your attorney, accountant, or other professional advisor.

KIDDER.COM

FOR LEASE

Highline Medical Pavilion

16233 SYLVESTER ROAD SW, BURIEN, WA



DIRECT

INTERNAL BUILDING ACCESS
TO ST. ANNE HOSPITAL

MOVE-IN

READY MEDICAL SPACE

ABUNDANT

SURFACE & GARAGE PARKING

ON CAMPUS

AT VIRGINIA MASON FRANCISCAN
HEALTH'S ST. ANNE HOSPITAL

EASY ACCESS

FROM SR-518, SR-509,
I-405, & I-5

KIDDER.COM

This information supplied herein is from sources we deem reliable. It is provided without any representation, warranty, or guarantee, expressed or implied as to its accuracy. Prospective Buyer or Tenant should conduct an independent investigation and verification of all matters deemed to be material, including, but not limited to, statements of income and expenses. Consult your attorney, accountant, or other professional advisor.

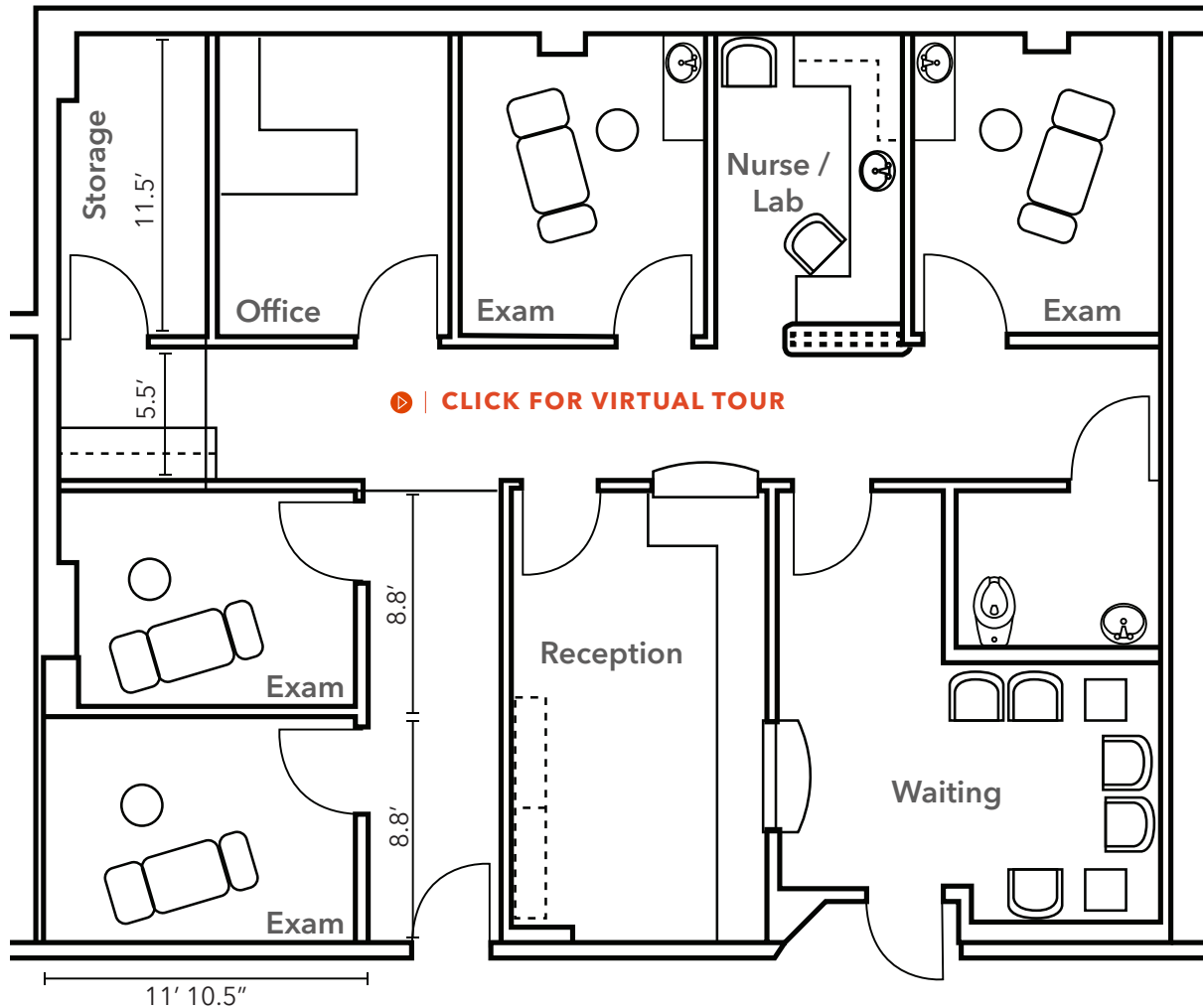
km Kidder
Mathews

FOR LEASE

Highline Medical Pavilion

16233 SYLVESTER ROAD SW, BURIEN, WA

Floor Plan | Move-in ready



1,546

RENTABLE SQUARE FEET

G-30

SUITE NUMBER

MOVE-IN

READY

BRIAN CLAPP

206.248.7316

brian.clapp@kidder.com

SPENCER CLAPP

206.248.7427

spencer.clapp@kidder.com

KIDDER.COM

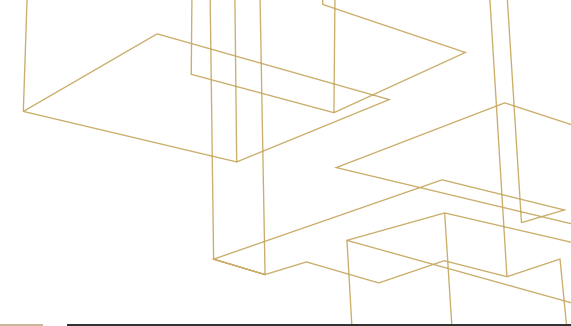
This information supplied herein is from sources we deem reliable. It is provided without any representation, warranty, or guarantee, expressed or implied as to its accuracy. Prospective Buyer or Tenant should conduct an independent investigation and verification of all matters deemed to be material, including, but not limited to, statements of income and expenses. Consult your attorney, accountant, or other professional advisor.

km Kidder Mathews

FOR LEASE

Highline Medical Pavilion

16233 SYLVESTER ROAD SW, BURIEN, WA



1,546

RENTABLE SQUARE FEET

G-30

SUITE NUMBER

BRIAN CLAPP

206.248.7316

brian.clapp@kidder.com

SPENCER CLAPP

206.248.7427

spencer.clapp@kidder.com

KIDDER.COM

This information supplied herein is from sources we deem reliable. It is provided without any representation, warranty, or guarantee, expressed or implied as to its accuracy. Prospective Buyer or Tenant should conduct an independent investigation and verification of all matters deemed to be material, including, but not limited to, statements of income and expenses. Consult your attorney, accountant, or other professional advisor.

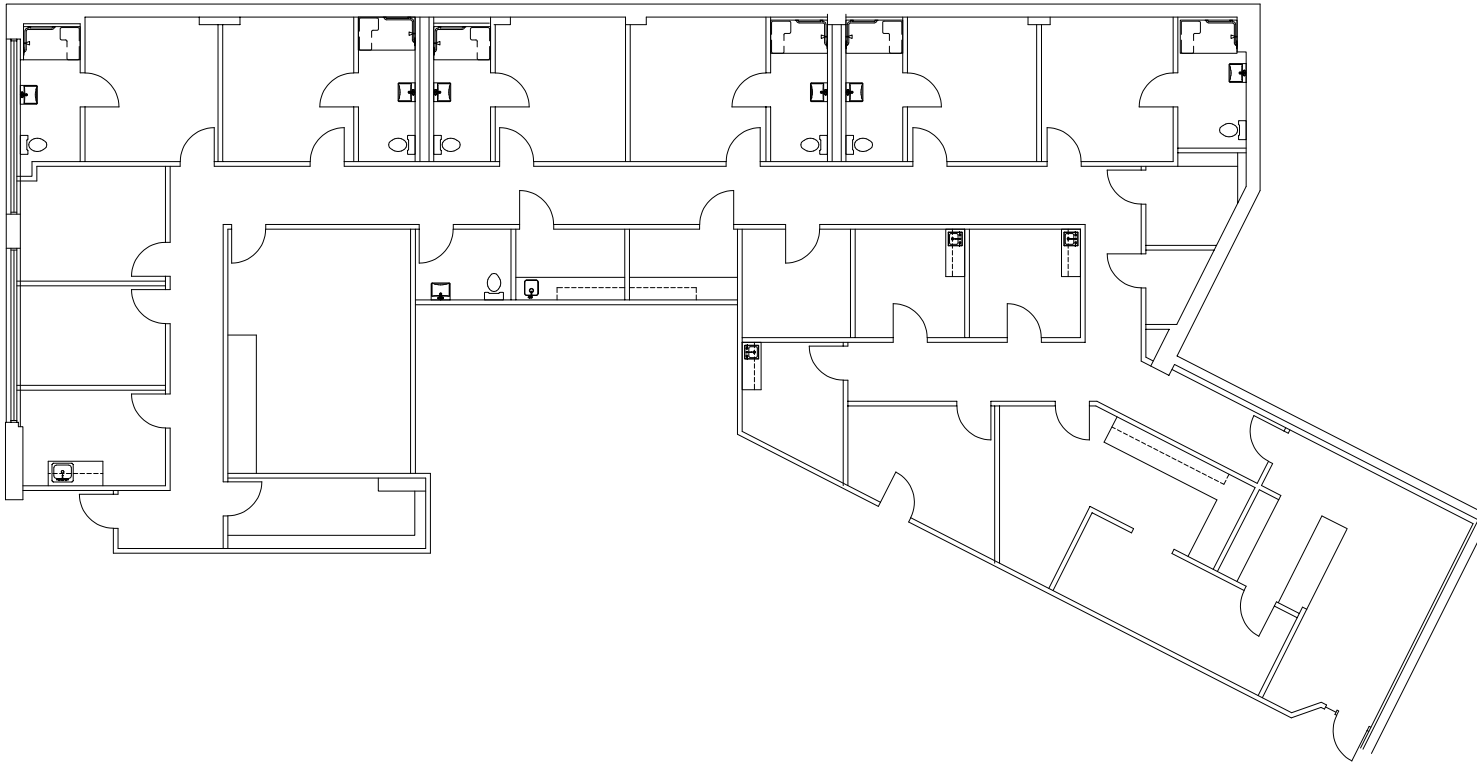


FOR LEASE

Highline Medical Pavilion

16233 SYLVESTER ROAD SW, BURIEN, WA

Floor Plan | Sleep Clinic



4,718

RENTABLE SQUARE FEET

G-70

SUITE NUMBER

**CALL
BROKER**

FOR AVAILABILITY

BRIAN CLAPP

206.248.7316

brian.clapp@kidder.com

SPENCER CLAPP

206.248.7427

spencer.clapp@kidder.com

KIDDER.COM

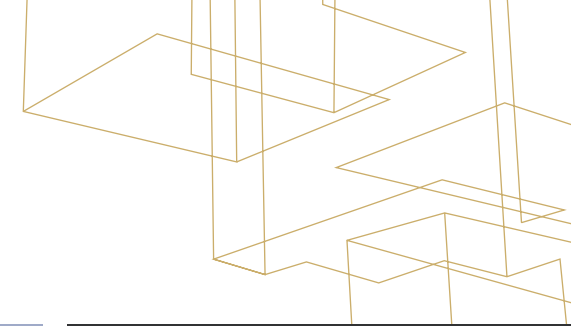
This information supplied herein is from sources we deem reliable. It is provided without any representation, warranty, or guarantee, expressed or implied as to its accuracy. Prospective Buyer or Tenant should conduct an independent investigation and verification of all matters deemed to be material, including, but not limited to, statements of income and expenses. Consult your attorney, accountant, or other professional advisor.



FOR LEASE

Highline Medical Pavilion

16233 SYLVESTER ROAD SW, BURIEN, WA



BRIAN CLAPP
206.248.7316
brian.clapp@kidder.com

SPENCER CLAPP
206.248.7427
spencer.clapp@kidder.com

KIDDER.COM

This information supplied herein is from sources we deem reliable. It is provided without any representation, warranty, or guarantee, expressed or implied as to its accuracy. Prospective Buyer or Tenant should conduct an independent investigation and verification of all matters deemed to be material, including, but not limited to, statements of income and expenses. Consult your attorney, accountant, or other professional advisor.

