

Laura Huntington
Principal - Managing Broker
Phone: (425) 754-4518
Laura@workmanres.com

2219 37th Street
Everett, WA

Deverie Wood
Associate Broker
Phone: (206) 920-2898
DWood@workmanres.com

OFFERED FOR LEASE

EVERETT CBD-INDUSTRIAL WORKSHOP WITH OFFICE SPACE

*LOCATED STRATEGICALLY NEAR INTERSTATE 5 AND THE EVERETT CENTRAL BUSINESS DISTRICT.

*SINGLE AND THREE PHASE POWER SERVES THE 2468 ASF SPACE FOR LEASE.

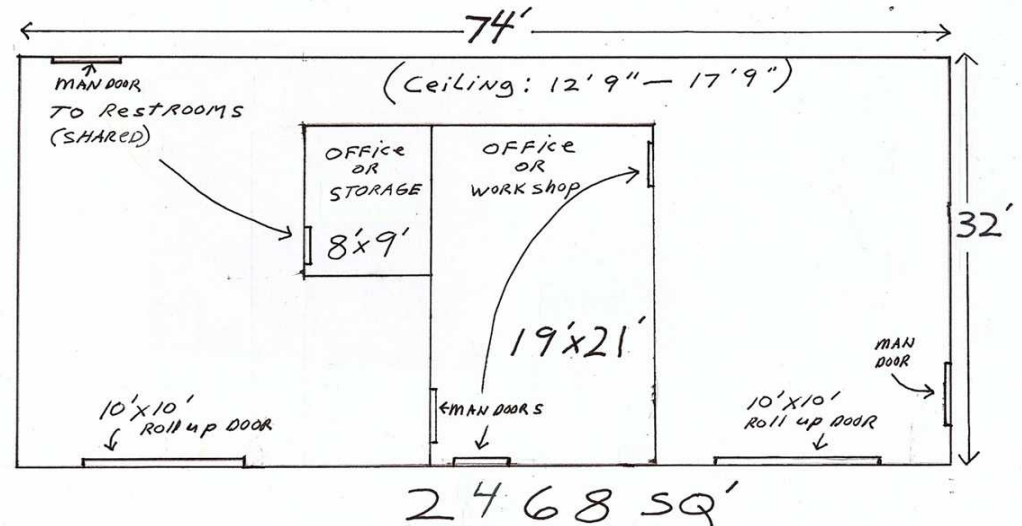
*TWO 10' X 10' ROLL UP DOORS, THREE MAN DOORS, CEILING HEIGHT: 12'9" TO 17'9". UPDATED WITH PUD / LED LIGHTING PACKAGE

*ACCESS TO SHARED HIGH DOCK/GRADE LEVEL DOCK AND STAGING AREA OUTSIDE THE LEASED AREA.

*AVAILABLE NOW!

CALL LAURA FOR A TOUR! 425-754-4518

SHOP BUILDING
Located off 37th in Everett
2219 37th

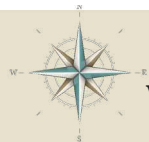


BASE RENT IS \$2989.99 MO.
AT \$1.21/SF/MONTH PER SF

NNN RENT IS \$341.87 MO.
AT .14/SF/MONTH PER SF

**TOTAL RENT:
\$3331.86 MO.**

CBA# 39990195



2219 37TH STREET

EVERETT, WA 98201



CBA# 39990195

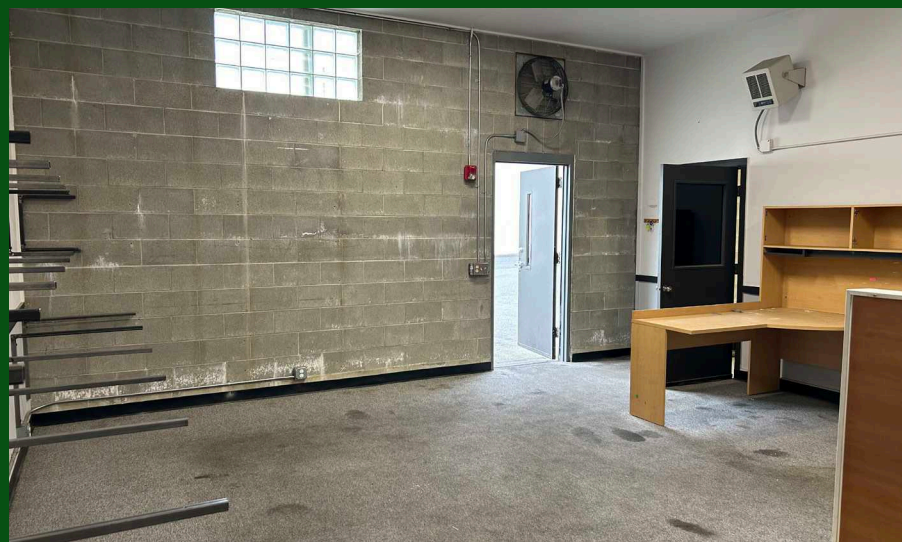
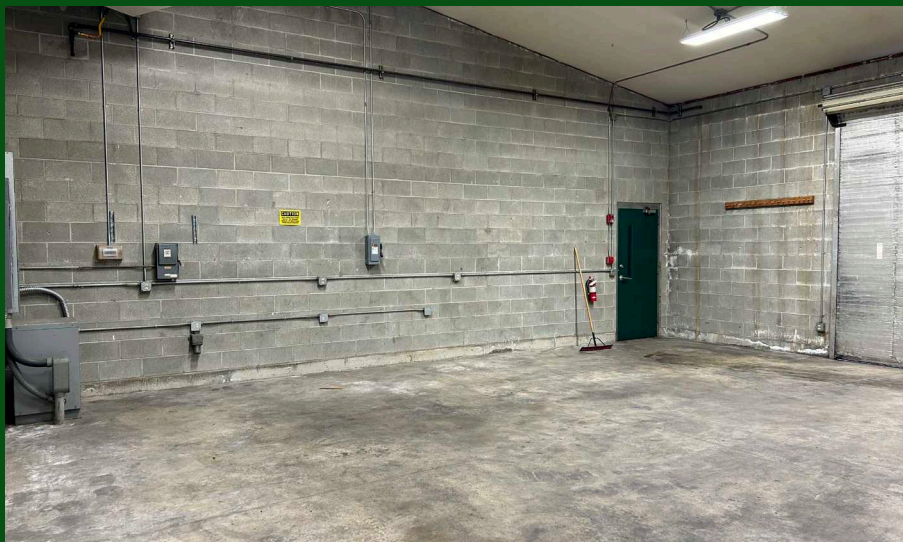


workmanres.com

WorkmanReal Estate Services | 922 First St, Suite A, Snohomish WA 98290 | 425-754-4518

2219 37TH STREET

EVERETT, WA 98201



CBA# 39990195



workmanres.com

WorkmanReal Estate Services | 922 First St, Suite A, Snohomish WA 98290 | 425-754-4518