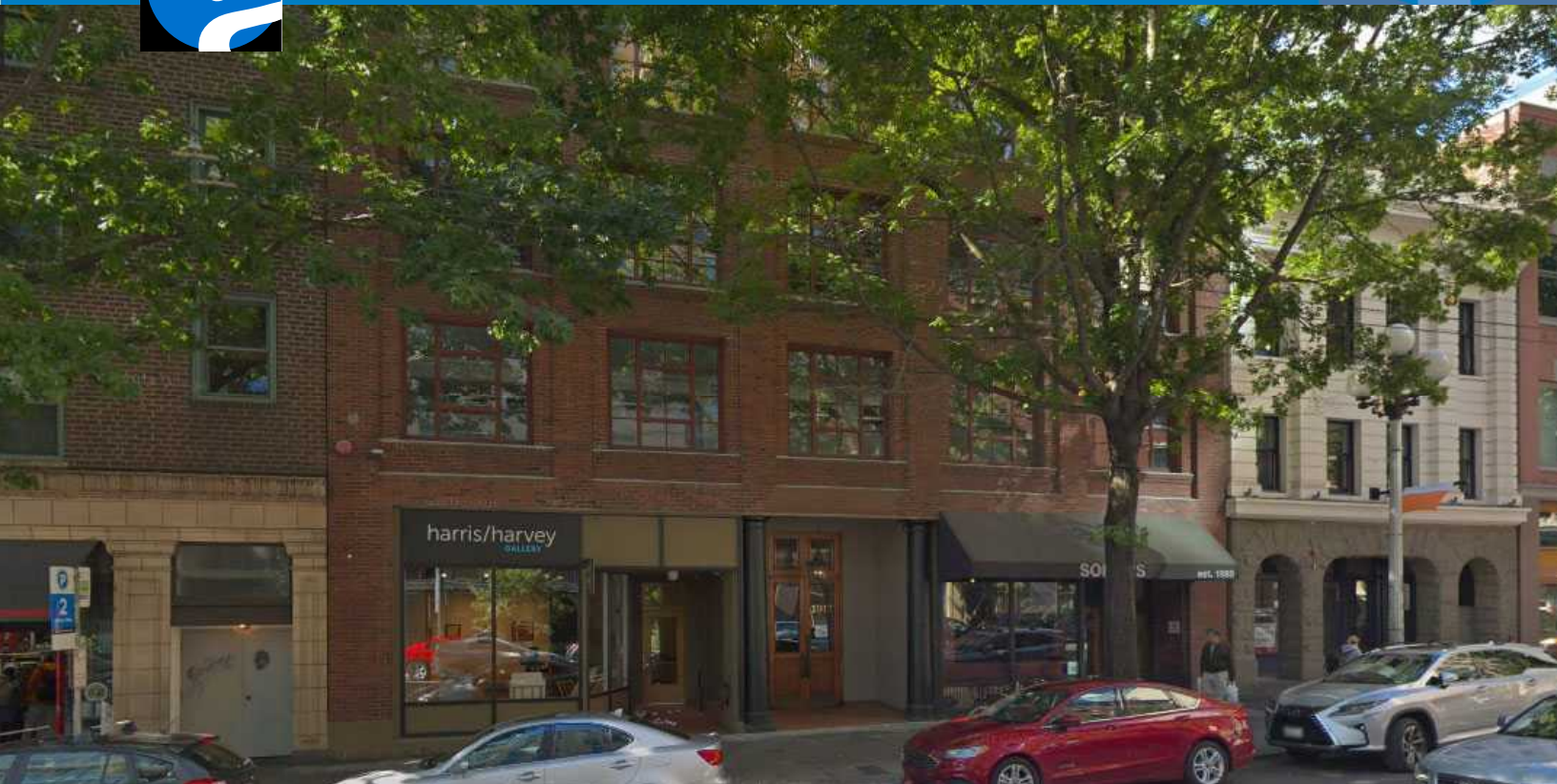




ALASKA TRADE BUILDING

1917 1ST AVENUE, SEATTLE WASHINGTON

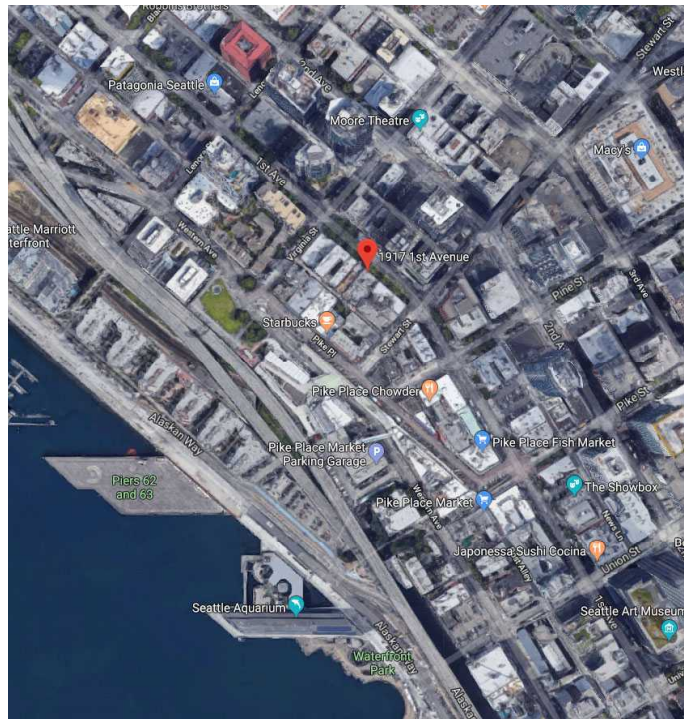


FEATURES

- Prime Location next to Pike Place Market.
- Entire TOP FLOOR with direct elevator access into suite.
- Private rooftop area with secured access and water views.
- Open floor plan with private offices, 2 restrooms, kitchen area, and conference room.
- Very secure and controlled main entrance including security cameras and Key FOBs.
- Amazing design features- wood beams, exposed brick, large windows, etc.
- Secure bike storage and locker rooms w/shower located on A level.
- Walking distance to several amenities and restaurants

LEASE INFORMATION

Lease Type	<i>NNN (\$14.61/SF)</i>
Availability	<i>Available Immediately</i>
Rent	<i>\$28.00/SF</i>
Space Available	
<i>Suite 400</i>	<i>3,031 SF</i>



JAY AZOSE

425.974.4203
206.650.4100
jazose@azose.com

MICHAEL AZOSE

425.974.4236
206.856.7576
mazose@azose.com



MARK O'SHEA

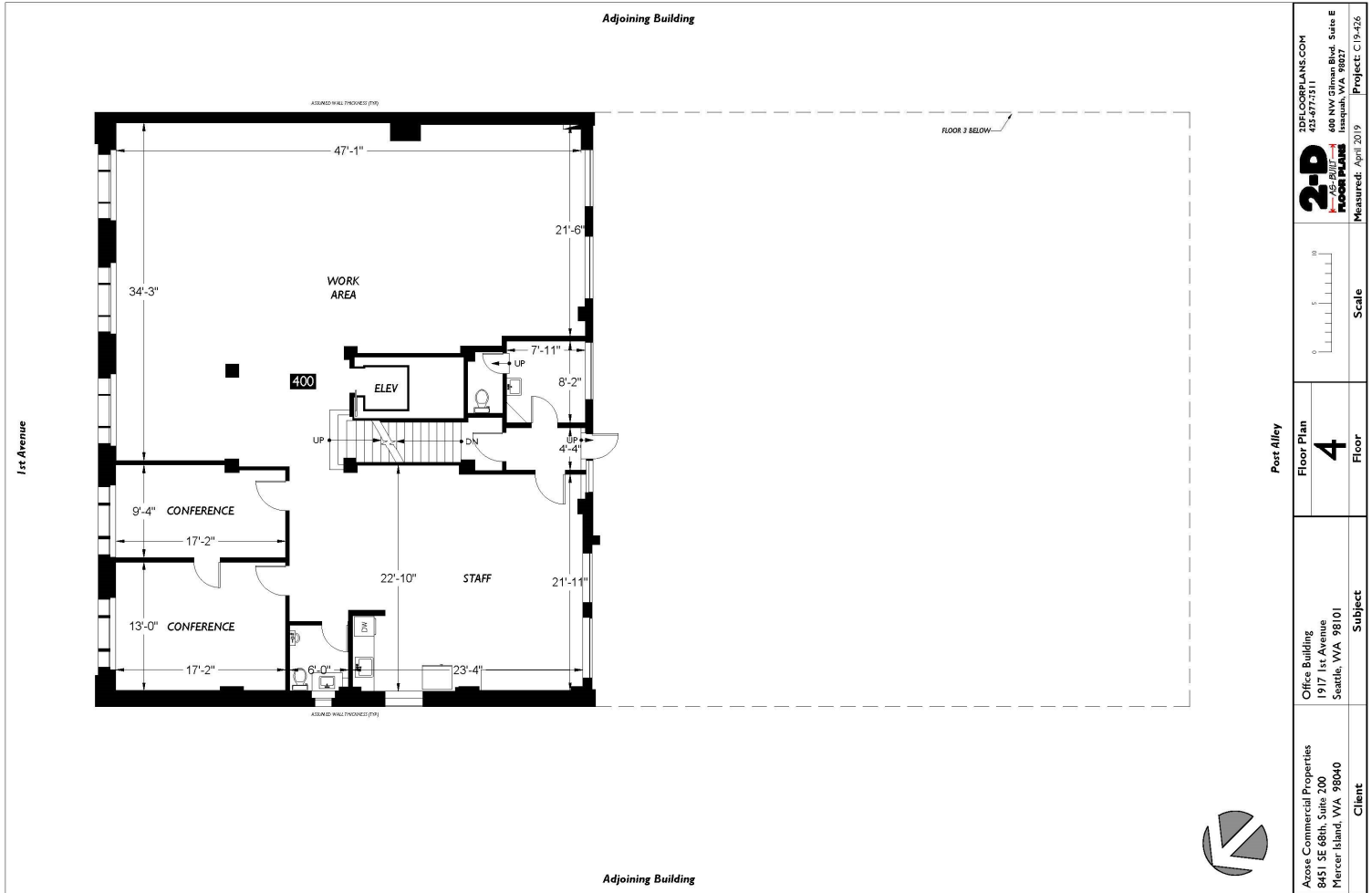
425.974.4201
425.922.5468
moshea@azose.com

8451 SE 68TH ST., STE 200
MERCER ISLAND, WA 98040
425.643.8400
WWW.AZOSE.COM



ALASKA TRADE BUILDING

1917 1ST AVENUE, SEATTLE WASHINGTON



1ST FLOOR PLANS.COM 202-477-7371 600 N.W. 57th Ave., Suite E Seattle, WA 98107 Project: C19-426 Measured: April 2019	
2-D 2-Dimensional FLOOR PLANS	Scale 0 5 10
Post Alley Floor Plan 4 Floor	Subject Office Building 1917 1st Avenue Seattle, WA 98101
Client Azose Commercial Properties 8451 SE 68th, Suite 200 Mercer Island, WA 98040	Subject Office Building 1917 1st Avenue Seattle, WA 98101



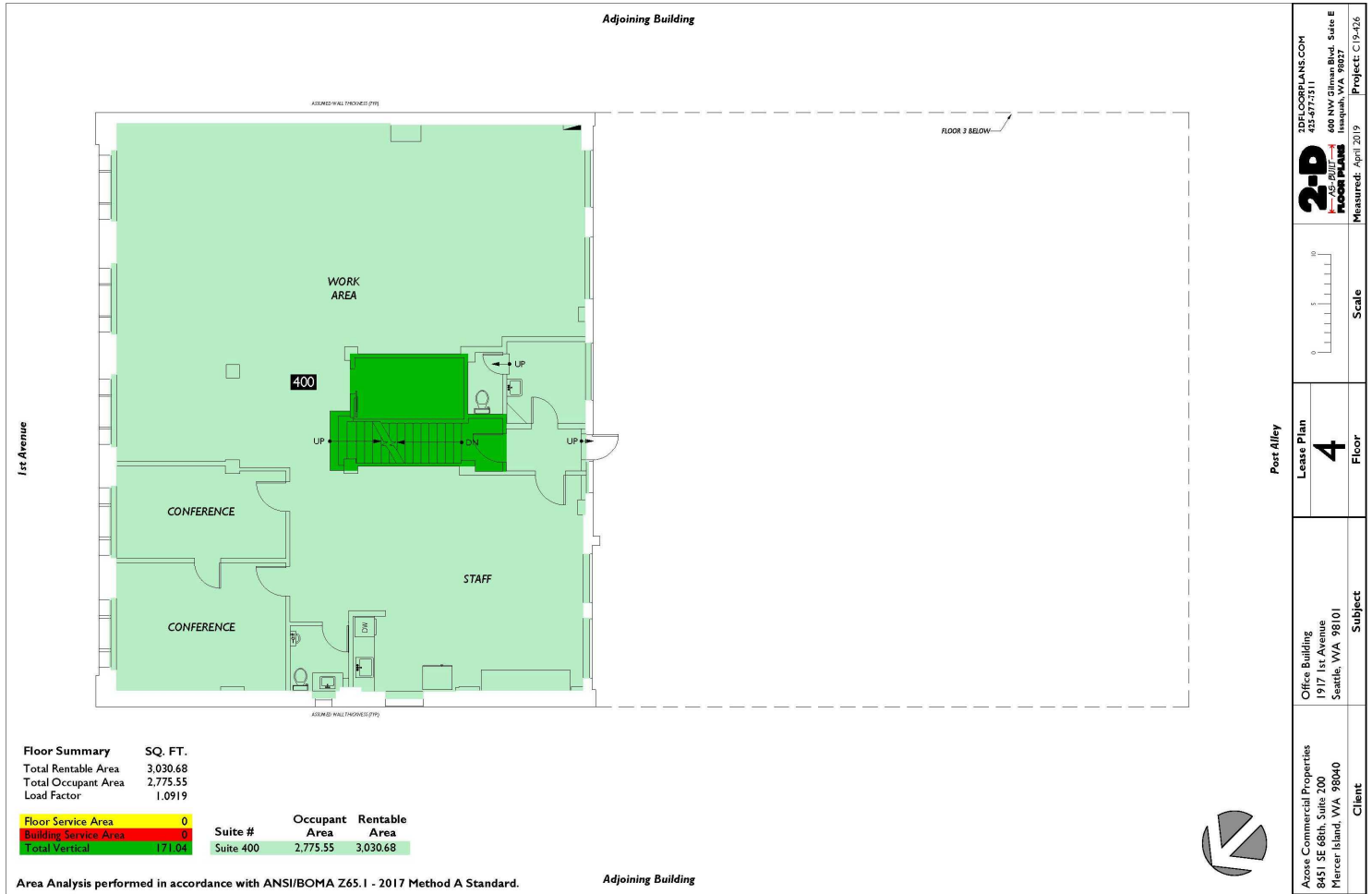
JAY AZOSE
 425.974.4203
 206.650.4100
 jazose@azose.com

MICHAEL AZOSE
 425.974.4236
 206.856.7576
 mazose@azose.com



MARK O'SHEA
 425.974.4201
 425.922.5468
 moshea@azose.com

8451 SE 68TH ST., STE 200
 MERCER ISLAND, WA 98040
 425.643.8400
 WWW.AZOSE.COM



JAY AZOSE
425.974.4203
206.650.4100
jazose@azose.com

MICHAEL AZOSE
425.974.4236
206.856.7576
mazose@azose.com



MARK O'SHEA
425.974.4201
425.922.5468
moshea@azose.com

8451 SE 68TH ST., STE 200
MERCER ISLAND, WA 98040
425.643.8400
WWW.AZOSE.COM