

4,718 SF



Prologis Park Trans-Pacific



4702 20th Street E
Fife, WA 98424 USA

LOCATION

- Located less than half a mile away from Interstate 5
- Three miles to the Port of Tacoma

FACILITY

- Total available area: 4,718 SF
- 1 dock high door
- 1 drive-in door

ADVANTAGES AND AMENITIES

- LED lighting upgrade
- No City of Fife B&O taxes
- Low operating expensive



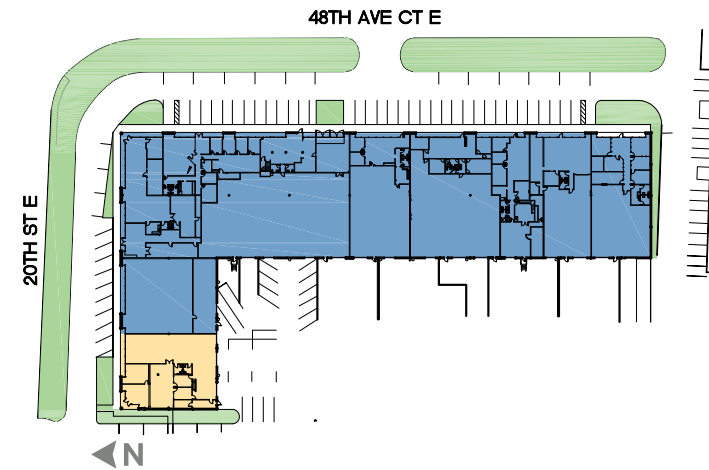
Prologis Essentials: your single-source service for efficient move-in and operations at [prologisessentials.com](https://www.prologisessentials.com)

www.prologis.com

4,718 SF

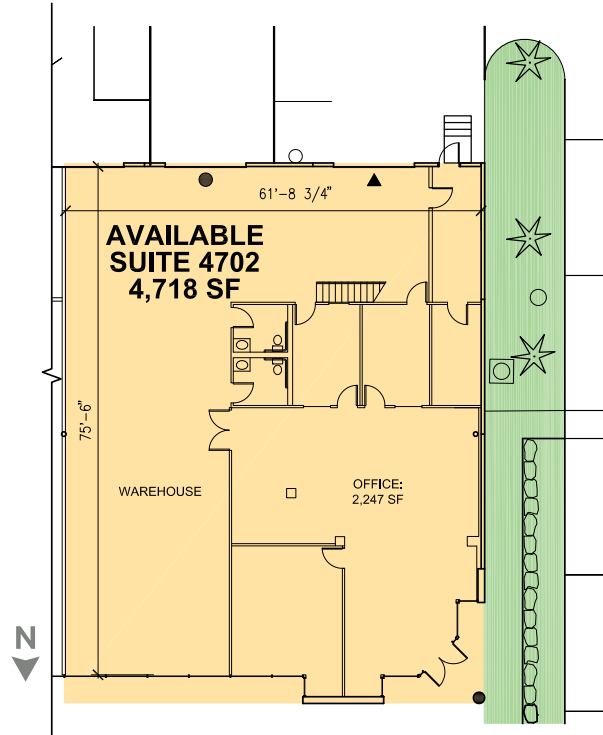


Prologis Park Trans-Pacific



LEGEND:

- DRIVE-IN DOOR
- ▲ DOCK POSITION
- LAND
- LEASED AREA
- AVAILABLE AREA



CBRE, Inc.

Monte Decker, CCIM
monte.decker@cbre.com
ph +1 253 596 0041
1201 Pacific Avenue
Suite 1502
Tacoma, WA 98402 USA

Prologis

Mark Roddy
mroddy@prologis.com
ph +1 206 414 7617
12720 Gateway Drive
Suite 110
Tukwila, WA 98168 USA

© 2024 CBRE, Inc. All rights reserved. This information has been obtained from sources believed reliable but has not been verified for accuracy or completeness. You should conduct a careful, independent investigation of the property and verify all information. Any reliance on this information is solely at your own risk. CBRE and the CBRE logo are service marks of CBRE, Inc. All other marks displayed on this document are the property of their respective owners, and the use of such marks does not imply any affiliation with or endorsement of CBRE SD 4.2.24

Prologis Essentials: your single-source service for efficient move-in and operations at [prologisessentials.com](https://www.prologisessentials.com)

No warranty or representation, expressed or implied, is made as to the accuracy of the information contained herein, and same is submitted subject to error and omissions.