

AVAILABLE FOR LEASE

VAN DOREN'S LANDING

23119 66th Avenue South • Kent, WA



NEWMARK

THAD MALLORY, SIOR
Vice Chairman
425.362.1410
thad.mallory@nrmk.com

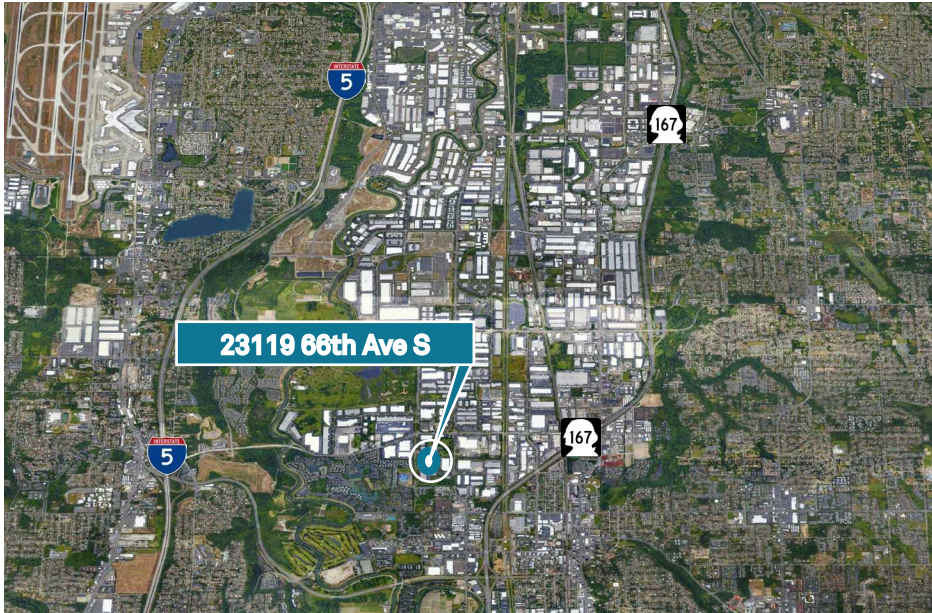
TAYLOR HOFF, SIOR
Executive Managing Director
425.362.1388
taylor.hoff@nrmk.com

CAM WARREN
Managing Director
425.362.1395
cam.warren@nrmk.com

AVAILABLE FOR LEASE

VAN DOREN'S LANDING

23119 66th Avenue South • Kent, WA



Building 1 | 15,956 SF (4,860 SF Office)

Available September 1, 2024

2 Dock High Doors

1 Grade Level Door

24' Clear Height

End cap space with good parking

High-end corporate environment

Easy access to I-5 and Hwy-167

Call for rates

NEWMARK

THAD MALLORY, SIOR
Vice Chairman
425.362.1410
thad.mallory@nrmk.com

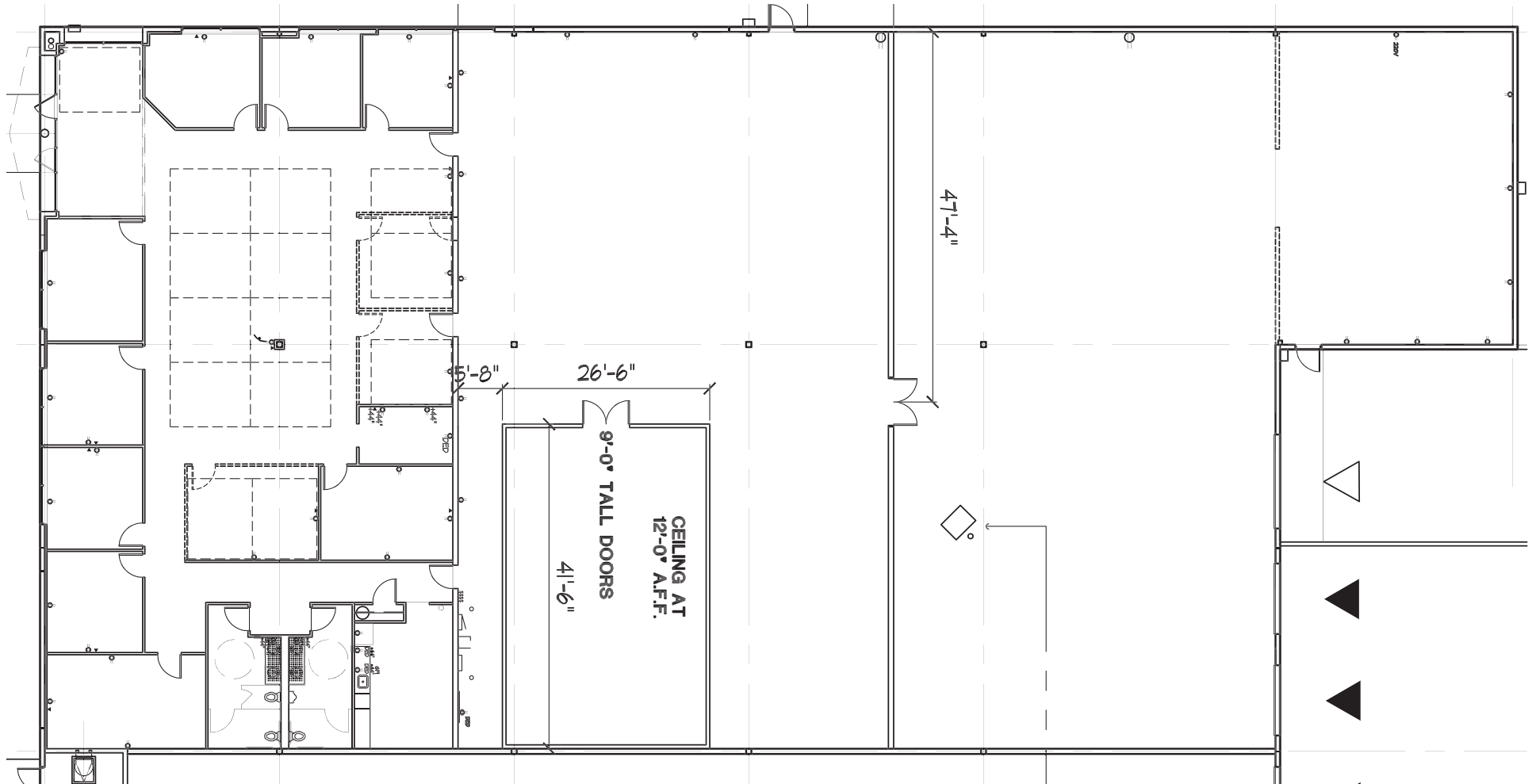
TAYLOR HOFF, SIOR
Executive Managing Director
425.362.1388
taylor.hoff@nrmk.com

CAM WARREN
Managing Director
425.362.1395
cam.warren@nrmk.com

AVAILABLE FOR LEASE

VAN DOREN'S LANDING

23119 66th Avenue South • Kent, WA



NEWMARK

The information contained herein has been obtained from sources deemed reliable but has not been verified and no guarantee, warranty or representation, either express or implied, is made with respect to such information. Terms of sale or lease and availability are subject to change or withdrawal without notice.