

4501

W Marginal Way
Seattle, WA 98106

SEATTLE WAREHOUSE & YARD

Multiple loading docks | Port access



FOR SUBLEASE



HIGHLIGHTS



BUILDING SIZE

27,586 SF building (7,500 SF Office)



CEILING HEIGHT

15' - 28'



LOADING

Multiple loading docks



YARD

1 Acres



LEASE RATE

Call for Rates



NOTES

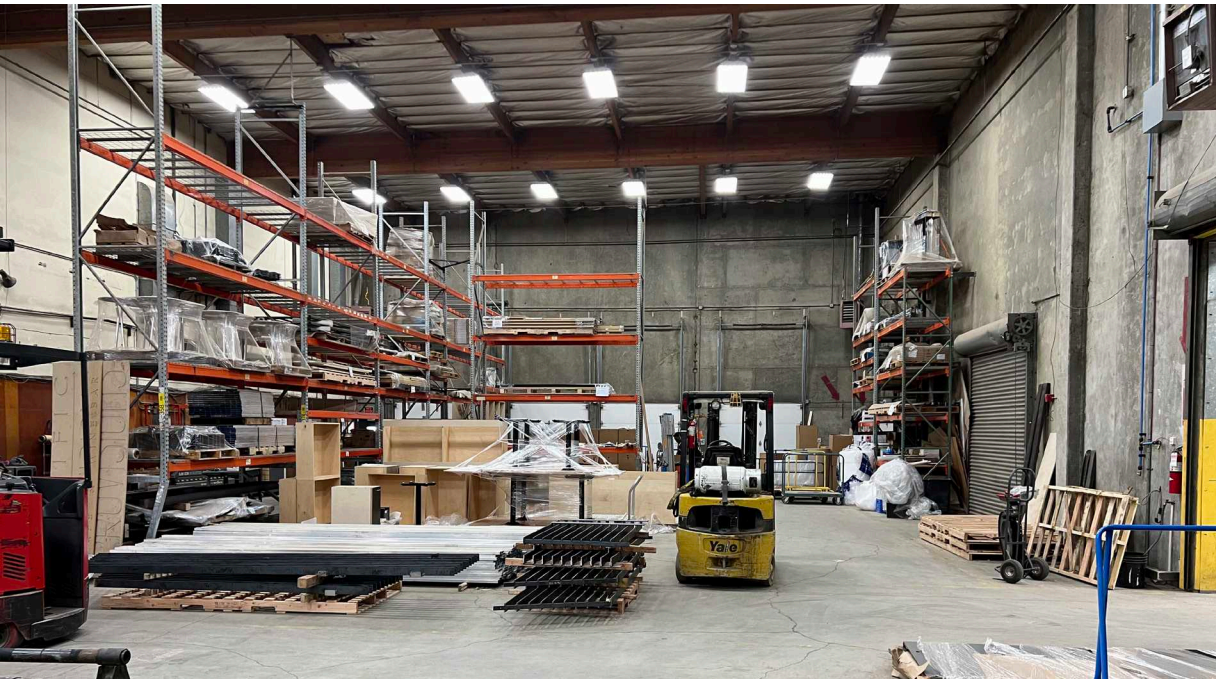
Close-in location with excellent port access
Fenced and gated property

HANS SWENSON
+1 425 586 5630
hswenson@nai-psp.com

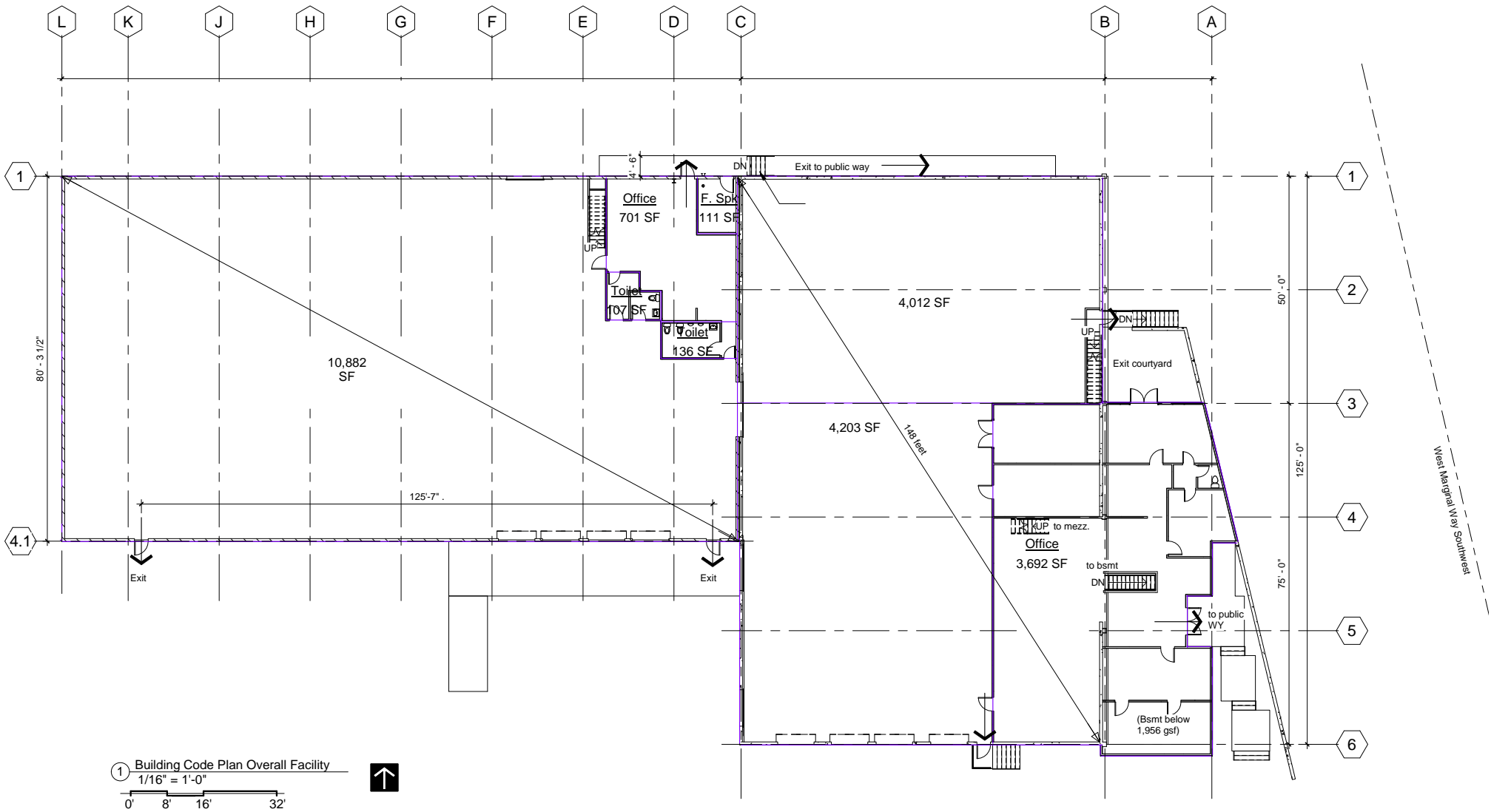
TAMIR OHAYON
+1 425 586 5627
tohayon@nai-psp.com

ALLY BRADEN
+1 425 586 5649
abraden@nai-psp.com

NAI Puget Sound Properties



FLOOR PLAN







LOCATION HIGHLIGHTS

- Intersection of e-commerce and port corridors
- Immediate proximity to port-corridors and major freeways
- Minutes from Downtown Seattle

DISTANCE

- 1 Mile:**
Port of Seattle
- 2 Miles:**
Downtown Seattle
- 12 Miles:**
Downtown Bellevue

DEMOGRAPHICS 5 MILES

-  **POPULATION**
423,509
-  **HOUSEHOLDS**
207,457

THE INFORMATION CONTAINED HEREIN HAS BEEN GIVEN TO US BY THE OWNER OF THE PROPERTY OR OTHER SOURCES WE DEEM RELIABLE, WE HAVE NO REASON TO DOUBT ITS ACCURACY, BUT WE DO NOT GUARANTEE IT. ALL INFORMATION SHOULD BE VERIFIED PRIOR TO PURCHASE OR LEASE. THIS BROKER'S PRICE OPINION IS NOT AN APPRAISAL AS DEFINED IN CHAPTER 18.140 RCW AND HAS BEEN PREPARED BY A REAL ESTATE LICENSEE, LICENSED UNDER CHAPTER 18.85 RCW WHO IS NOT ALSO STATE CERTIFIED OR STATE LICENSED AS A REAL ESTATE APPRAISER UNDER 18.140 RCW. G:\SHARED DRIVES\ADMIN TEAM\MARKETING\FLYERS\SEATTLE\4501 W MARGINAL WAY SW\PARCEL B - SOUTH PARCEL\4501 W MARGINAL WAY SW LEASE FLYER