

Office Space FOR LEASE

Lynnwood Business Center

4208-4210 198th St, SW Lynnwood, WA. 98036



FULL SERVICE RATE !!

Bldg 4208

<i>Suite # 108</i>	<i>Office</i>	<i>328 sqft</i>	<i>\$637.00/mo</i>
<i>Suite #202</i>	<i>Office</i>	<i>720 sqft</i>	<i>\$1,260.00/mo</i>
<i>Suite #203</i>	<i>Office</i>	<i>268 sqft</i>	<i>\$490.00/mo</i>
<i>Suite #206</i>	<i>Office</i>	<i>636 sqft</i>	<i>\$1,219.00/ mo</i>
<i>Suite #208</i>	<i>Office</i>	<i>637 sqft</i>	<i>\$1,166.00/mo</i>

Bldg 4210

<i>Suite 204</i>	<i>Office</i>	<i>393/sqft</i>	<i>\$753.00/mo</i>
<i>Suite 205</i>	<i>Office</i>	<i>377sqft</i>	<i>\$722.00/mo</i>
<i>Suite 208</i>	<i>Office</i>	<i>819/sqft</i>	<i>\$1,433.00/mo</i>



FEATURES

- Multi-Tenant Bldg. Class B Bldg.
- Full Service Lease Agreements
- Flexible Terms / Expansion Options
- Efficient floorplans
- Easy access to I-5, 405 & Hwy 99,
- Edmonds/Lynnwood, North Seattle
- Ample / Free parking

CONTACT

Matthew Royal
matthew@royalcommercialcorp.com

Ron Cox
ron@royalcommercialcorp.com

Office: 1-425-952-4000

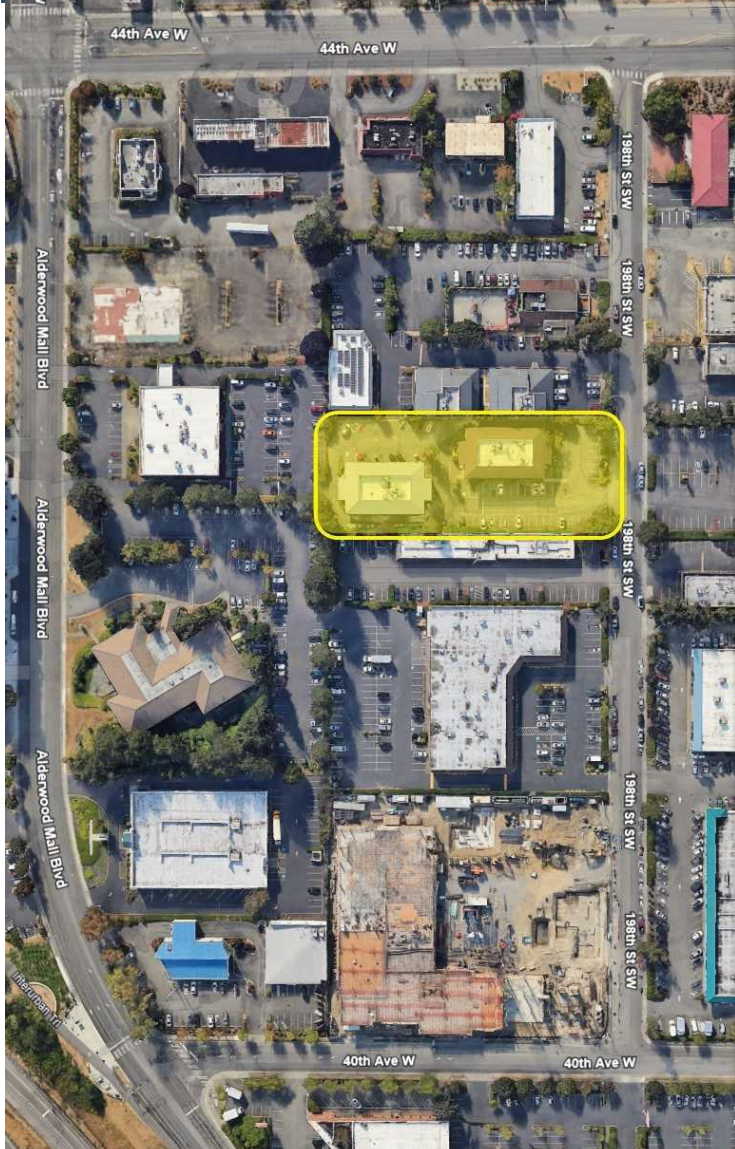


Royal Commercial Corp.

royalcommercialcorp.com

No warranty or representation, express or implied, is made as to the accuracy of the information contained herein, and same is submitted subject to errors omissions, change of price, rental or other conditions, withdrawal without notice, and to any specific listing conditions, imposed by our principals.

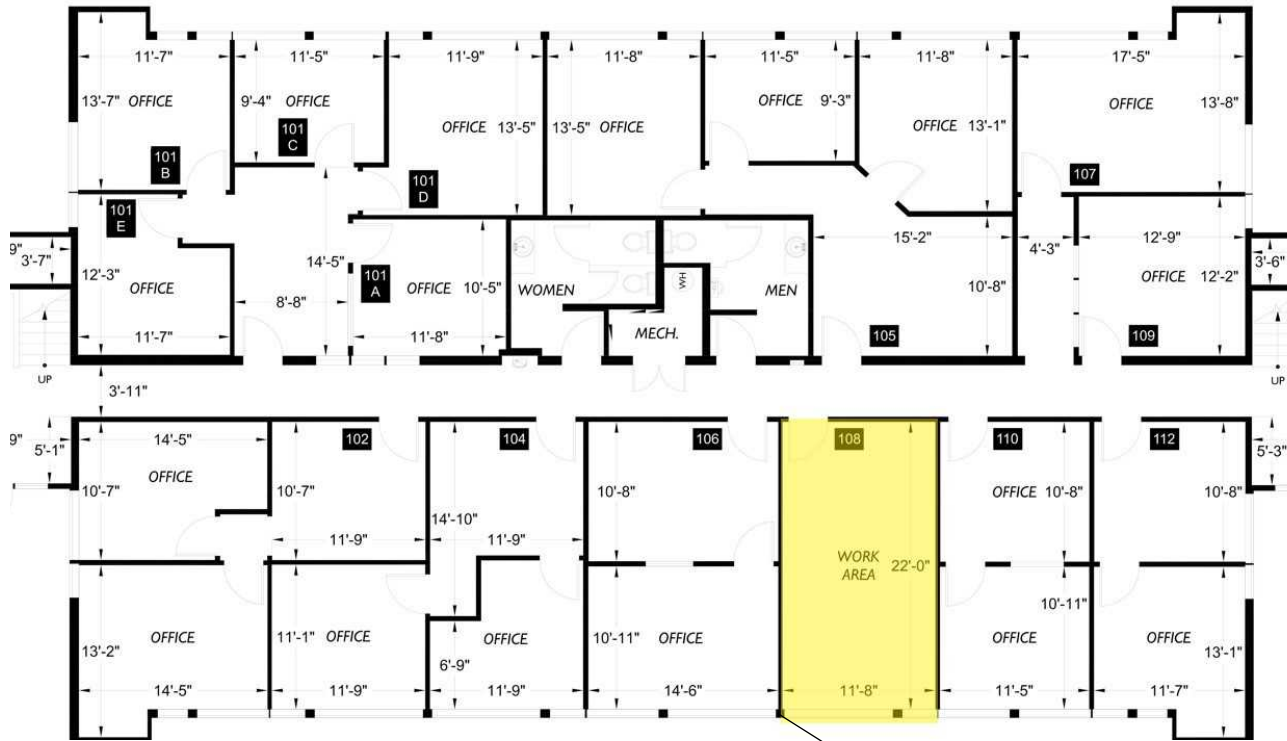
Office Space FOR LEASE



FOR LEASE

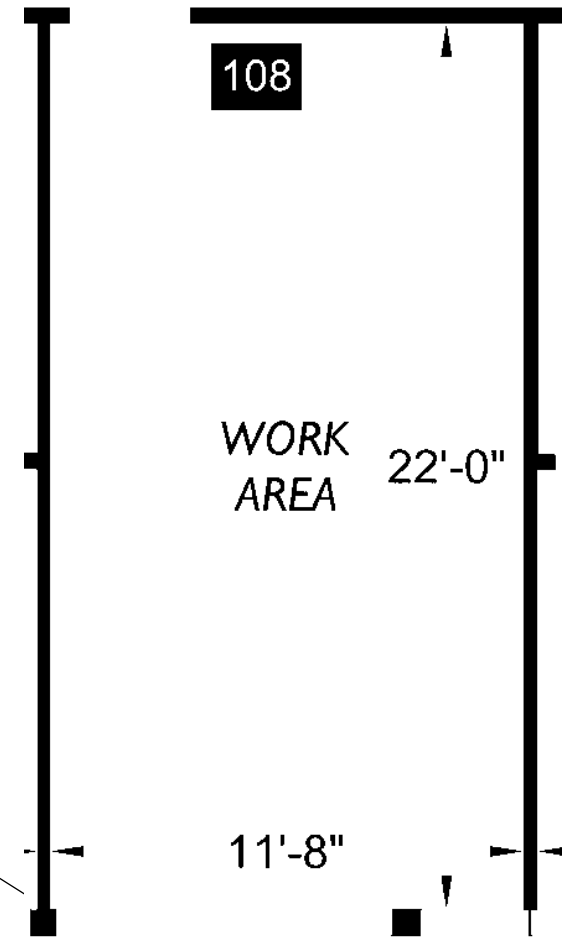
Lynnwood Business Center

4208 198th St, SW Lynnwood, WA. 98036



AVAILABLE SUITE / BLDG 4210

Suite	Office	Rate	Total
108	328 SF	\$1.95 SF/MO	\$637.00/mo



CONTACT

Matthew Royal
matthew@royalcommercialcorp.com

Ron Cox
ron@royalcommercialcorp.com

Office: 425-952-4000



Royal Commercial Corp.

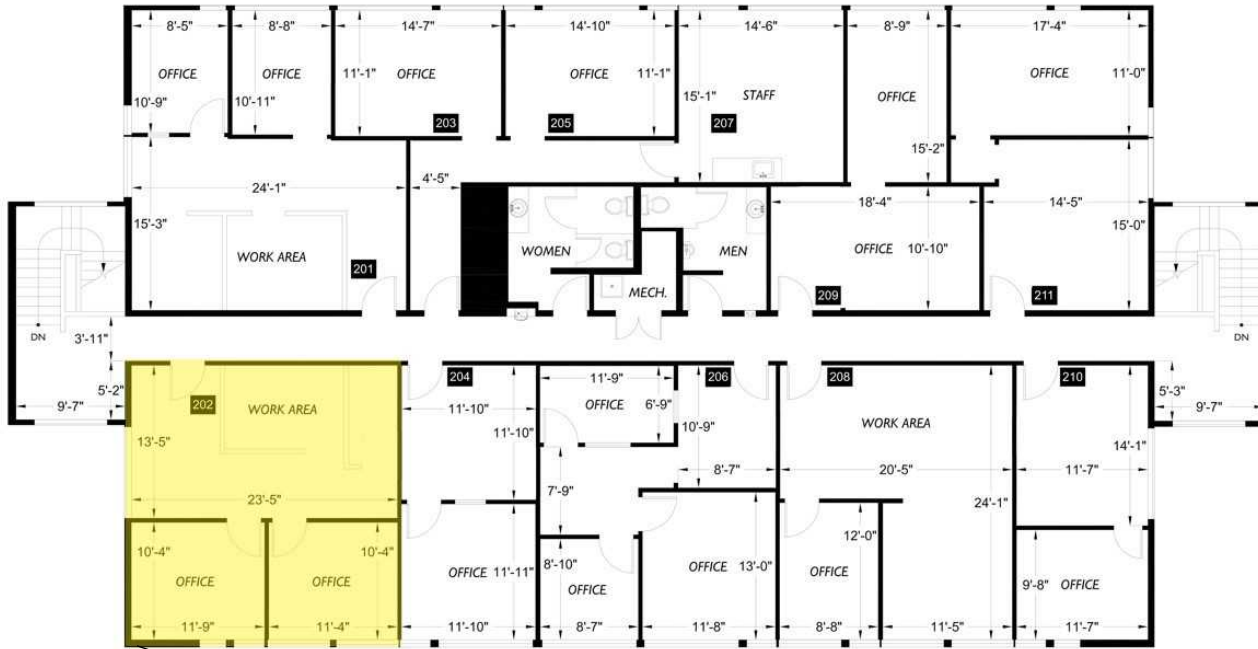
royalcommercialcorp.com

No warranty or representation, express or implied, is made as to the accuracy of the information contained herein, and same is submitted subject to errors omissions, change of price, rental or other conditions, withdrawal without notice, and to any specific listing conditions, imposed by our principals.

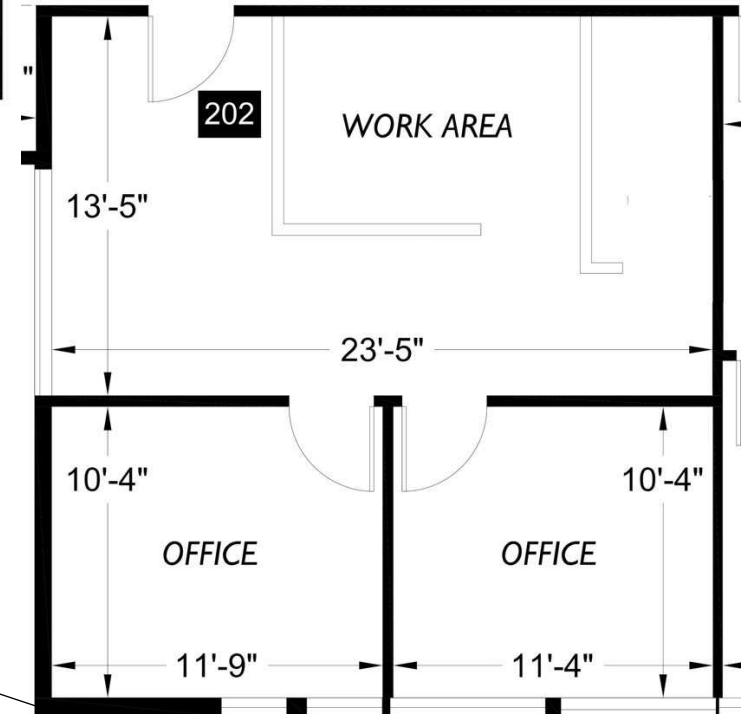
FOR LEASE

Lynnwood Business Center

4208 198th St, SW Lynnwood, WA. 98036



AVAILABLE SUITE / BLDG 4208			
Suite	Office	Rate	Total
202	720 SF	\$1.75 SF/MO	\$1,260 /mo



CONTACT

Matthew Royal
matthew@royalcommercialcorp.com

Ron Cox
ron@royalcommercialcorp.com

Office: 425-952-4000

royalcommercialcorp.com



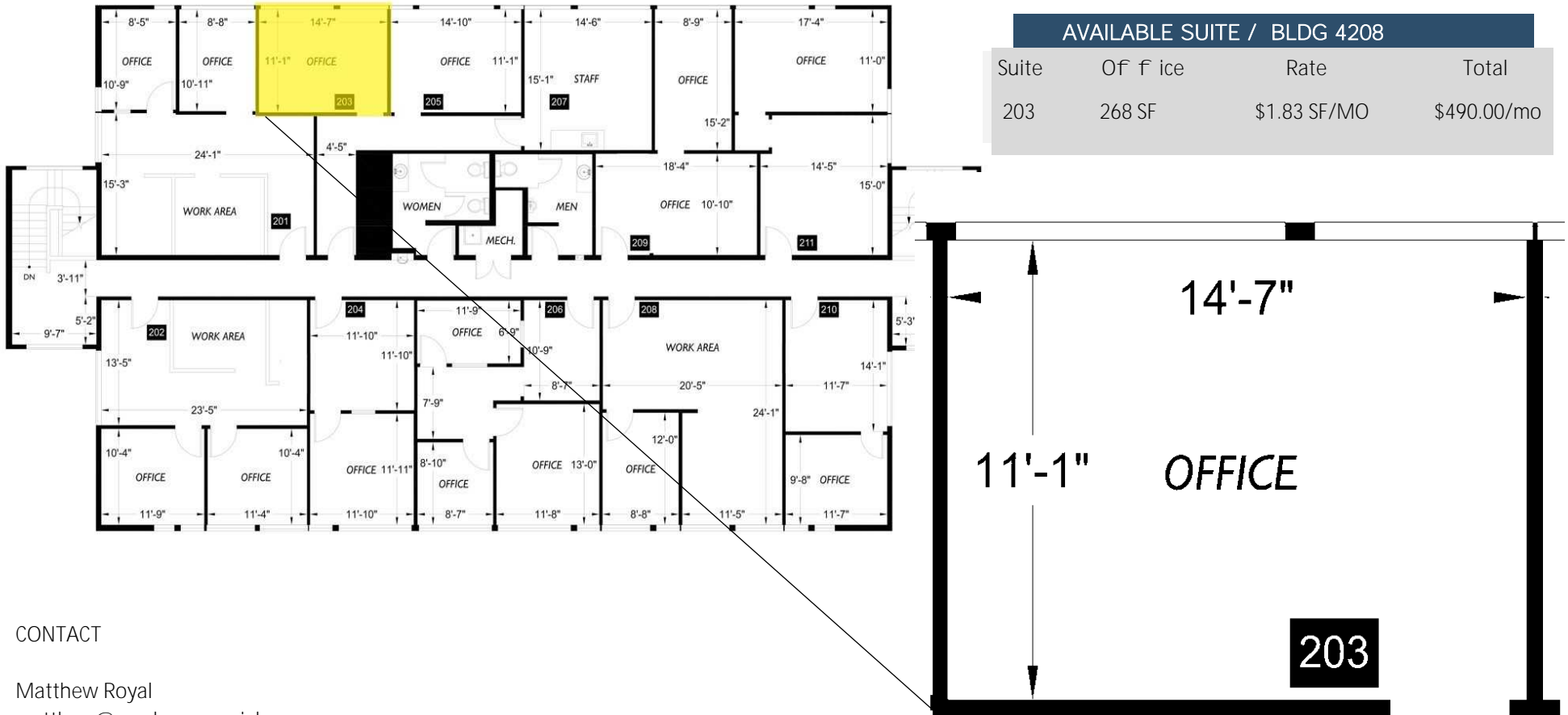
Royal Commercial Corp.

No warranty or representation, express or implied, is made as to the accuracy of the information contained herein, and same is submitted subject to errors omissions, change of price, rental or other conditions, withdrawal without notice, and to any specific listing conditions, imposed by our principals.

FOR LEASE

Lynnwood Business Center

4208 198th St, SW Lynnwood, WA. 98036



CONTACT

Matthew Royal
matthew@royalcommercialcorp.com

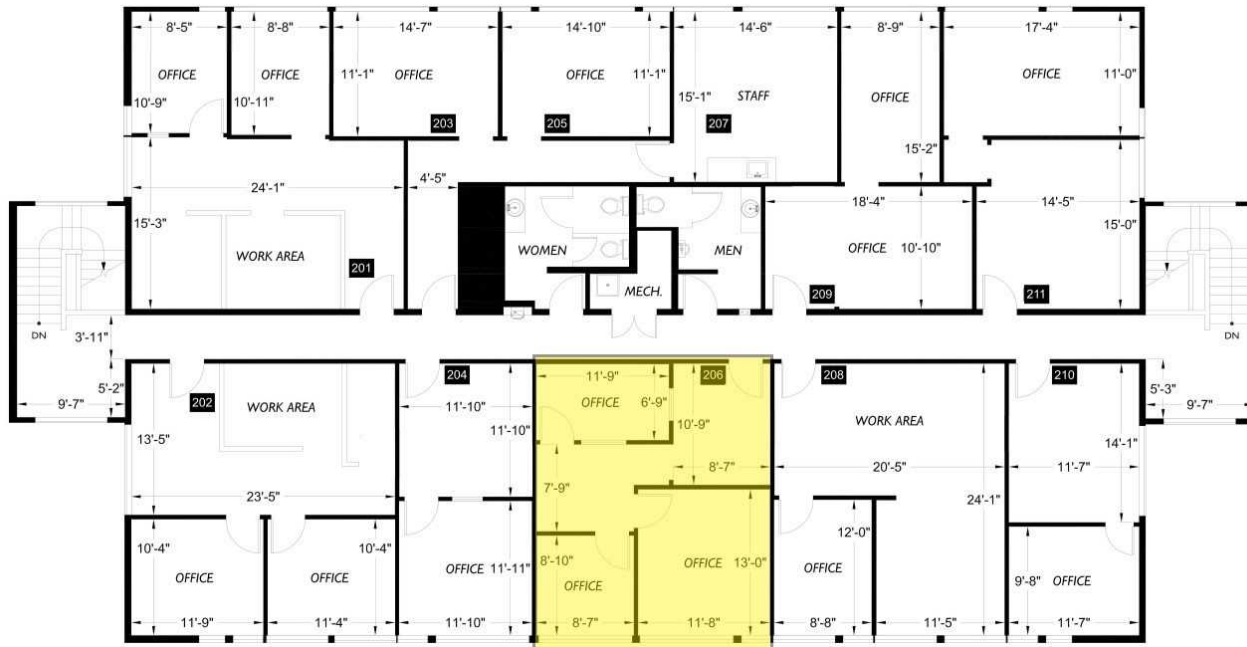
Ron Cox
ron@royalcommercialcorp.com

Of f ide425-952-4000

FOR LEASE

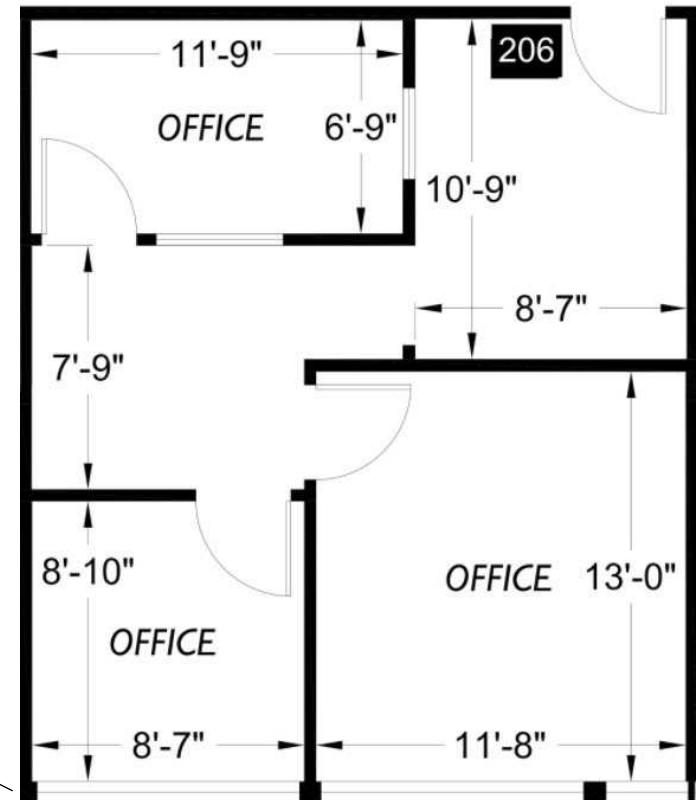
Lynnwood Business Center

4208 198th St, SW Lynnwood, WA. 98036



AVAILABLE SUITE / BLDG 4208

Suite	Of f ice	Rates	Total
208	636 SF	\$1.92 SF/MO	\$1,219.00



CONTACT

Matthew Royal
matthew@royalcommercialcorp.com

Ron Cox
ron@royalcommercialcorp.com

Of f ide425-952-4000

royalcommercialcorp.com

No warranty or representation, express or implied, is made as to the accuracy of the information contained herein, and same is submitted subject to errors omissions, change of price, rental or other conditions, withdrawal without notice, and to any specific listing conditions, imposed by our principals.

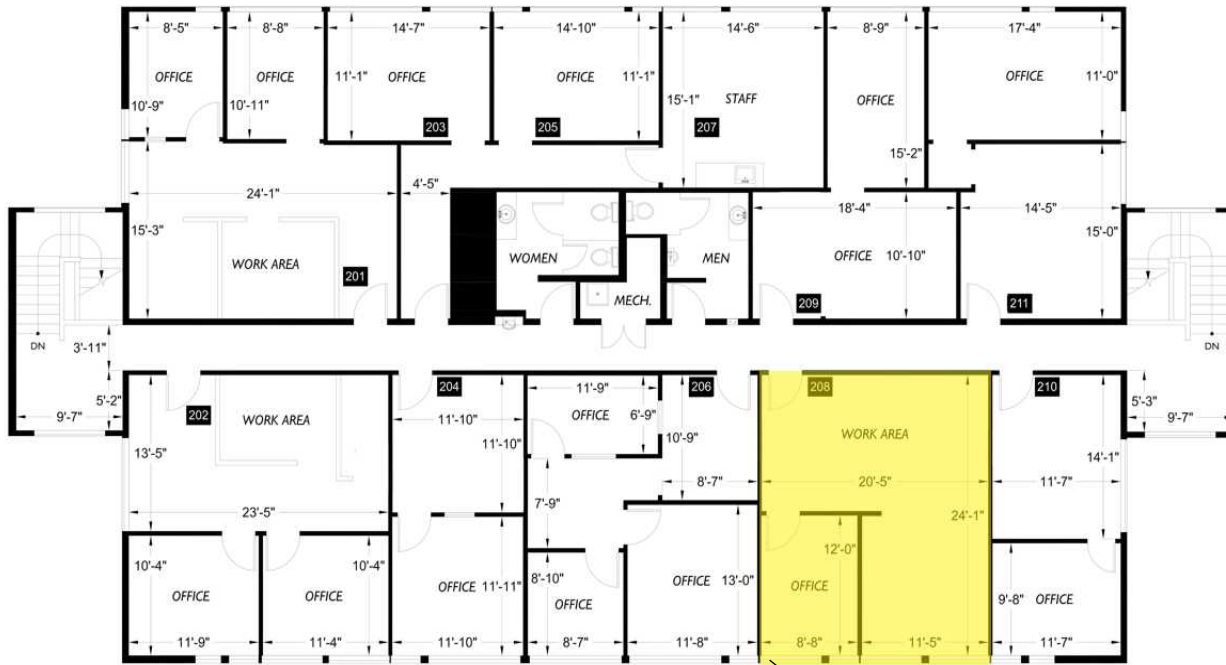


Royal Commercial Corp.

FOR LEASE

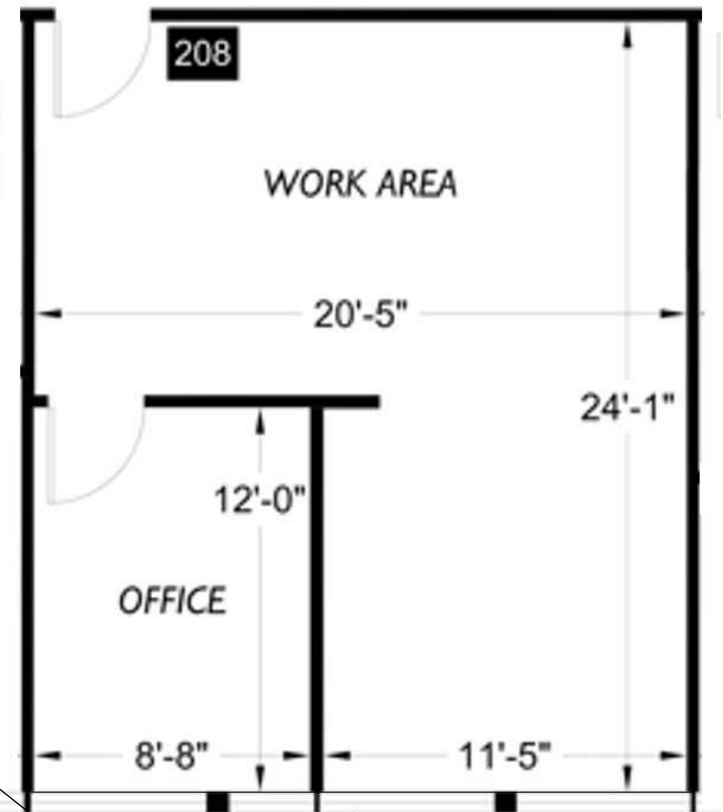
Lynnwood Business Center

4208 198th St, SW Lynnwood, WA. 98036



AVAILABLE SUITE / BLDG 4208

Suite	Of f ice	Rates	Total
208	637 SF	\$1.83 SF/MO	\$1,166.00



CONTACT

Matthew Royal
matthew@royalcommercialcorp.com

Ron Cox
ron@royalcommercialcorp.com

Of f ide425-952-4000

royalcommercialcorp.com



Royal Commercial Corp.

No warranty or representation, express or implied, is made as to the accuracy of the information contained herein, and same is submitted subject to errors omissions, change of price, rental or other conditions, withdrawal without notice, and to any specific listing conditions, imposed by our principals.

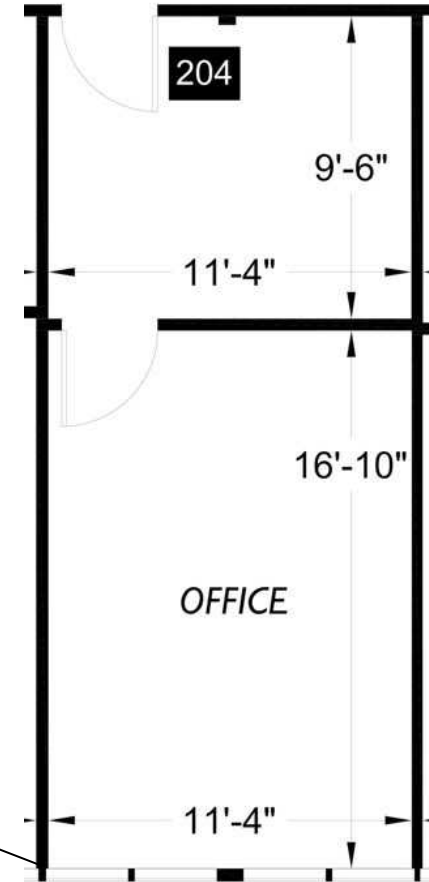
FOR LEASE

Lynnwood Business Center

4210 198th St, SW Lynnwood, WA. 98036

AVAILABLE SUITE / BLDG 4210

Suite	Of f ice	Rates	Total
204	393/SF	\$1.92 SF/MO	\$753.00



CONTACT

Matthew Royal
matthew@royalcommercialcorp.com

Ron Cox
ron@royalcommercialcorp.com

Of f ide425-952-4000



Royal Commercial Corp.

FOR LEASE

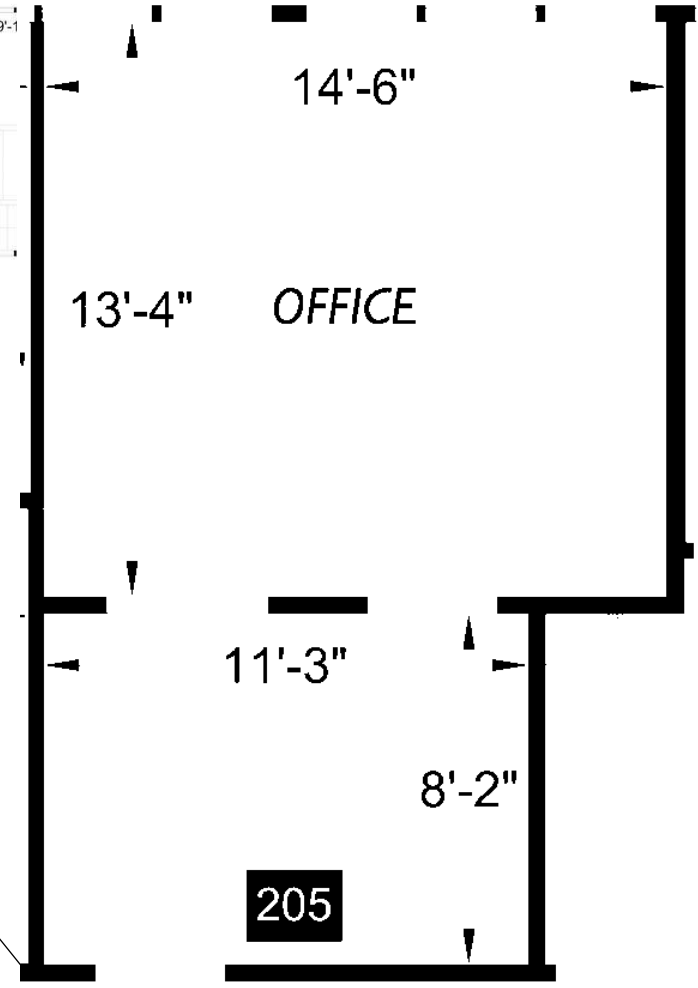
Lynnwood Business Center

4210 198th St, SW Lynnwood, WA. 98036



AVAILABLE SUITE / BLDG 4208

Suite	Of f ice	Rates	Total
205	377SF	\$1.91 SF/MO	\$723.00



CONTACT

Matthew Royal
matthew@royalcommercialcorp.com

Ron Cox
ron@royalcommercialcorp.com

Of f ide425-952-4000



Royal Commercial Corp.

royalcommercialcorp.com

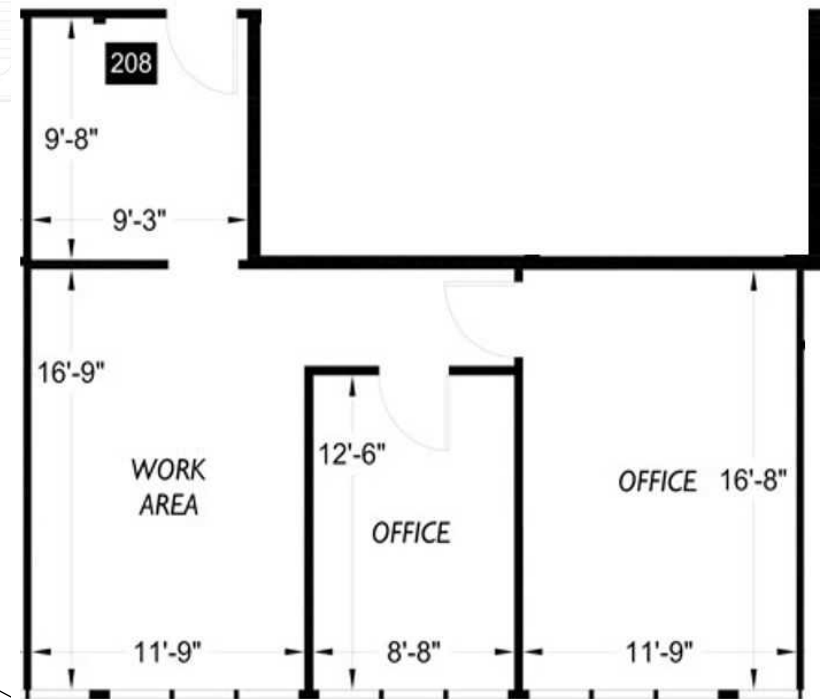
No warranty or representation, express or implied, is made as to the accuracy of the information contained herein, and same is submitted subject to errors omissions, change of price, rental or other conditions, withdrawal without notice, and to any specific listing conditions, imposed by our principals.

FOR LEASE

Lynnwood Business Center 4210 198th St, SW Lynnwood, WA. 98036



AVAILABLE SUITE / BLDG 4210			
Suite	Of f ice	Rates	Total
208	819 SF	\$1.875SF/MO	\$1,433.00



CONTACT

Matthew Royal
matthew@royalcommercialcorp.com

Ron Cox
ron@royalcommercialcorp.com

Of f ide425-952-4000



Royal Commercial Corp.