

SOUTH LAKE UNION  
CREATIVE OFFICE WITH VIEWS

1001 Westlake Avenue North, Seattle, WA 98109

MAXIMUM  
1-YEAR LEASE  
TERM



For more information please contact:

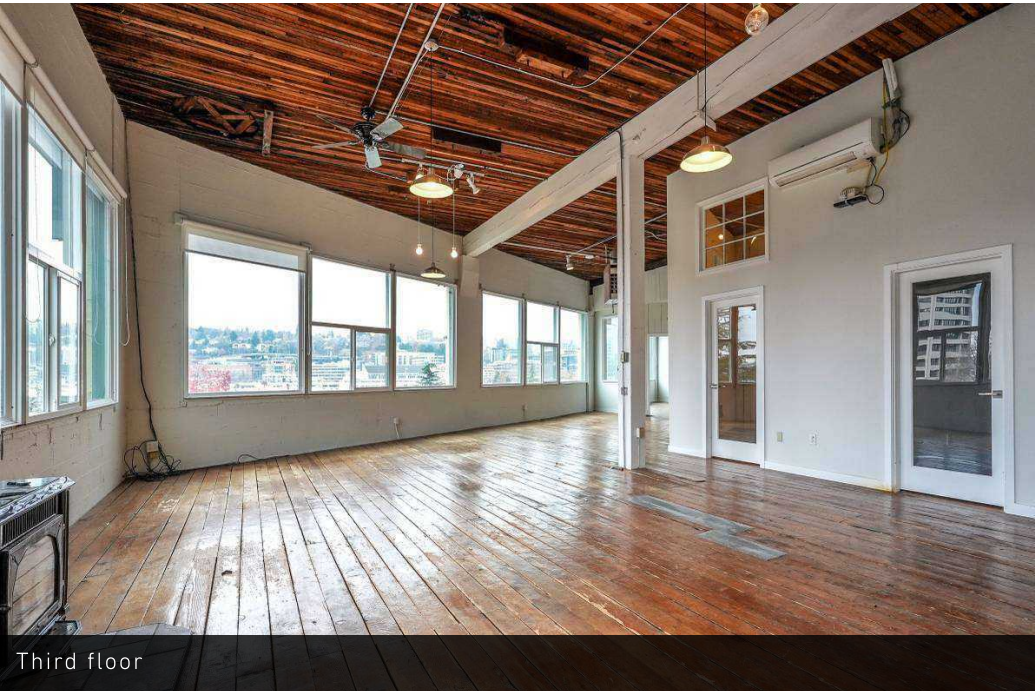
LAURA MILLER  
laura@gibraltarusa.com  
206.351.3573



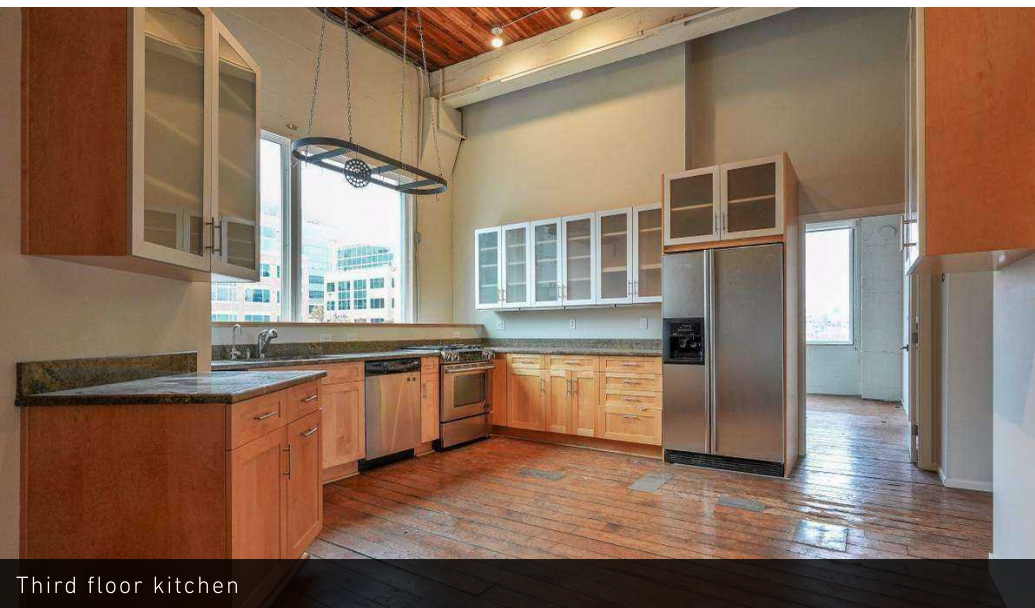


1001 WESTLAKE AVENUE NORTH, SEATTLE, WA 98109

# CREATIVE OFFICE FOR LEASE



Third floor



Third floor kitchen

## HIGHLIGHTS

- Available now. Full 2nd and 3rd (top two floors) floor creative offices located on the shores of the west side of Lake Union featuring stunning lake and city views
- Maximum 1-year lease term
- Each floor is 6,200 SF (can be leased together or separately)
- Character rich spaces features abundant natural light, giant windows, high ceilings, original wood floors, and HVAC
- Mix of large open work areas and private offices, conference rooms, kitchens
- Freight elevator and stair access (no passenger elevator)
- Two parking stalls
- Rental Rate: \$19.50/SF/YR + NNN (\$3.00/SF). HVAC and utilities included in NNN.



77

TRANSIT SCORE



93

WALK SCORE



92

BIKE SCORE



69,945

TOTAL POPULATION



43,708

TOTAL HOUSEHOLDS



\$116,979

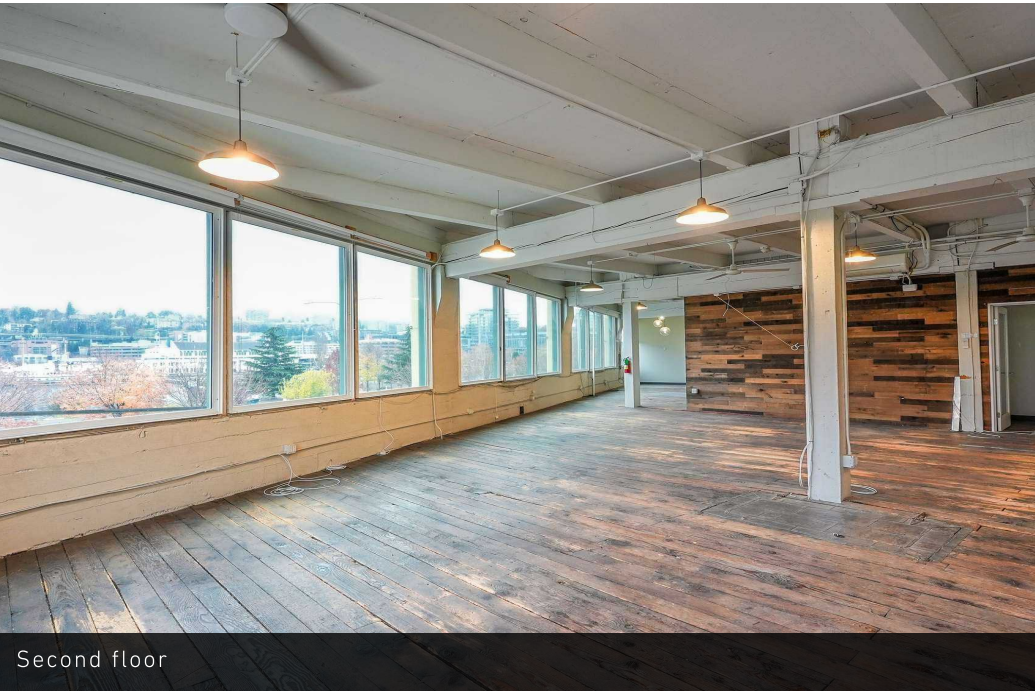
MEDIAN INCOME

\* Demographic data derived from 2024, 1 mile radius



1001 WESTLAKE AVENUE NORTH, SEATTLE, WA 98109

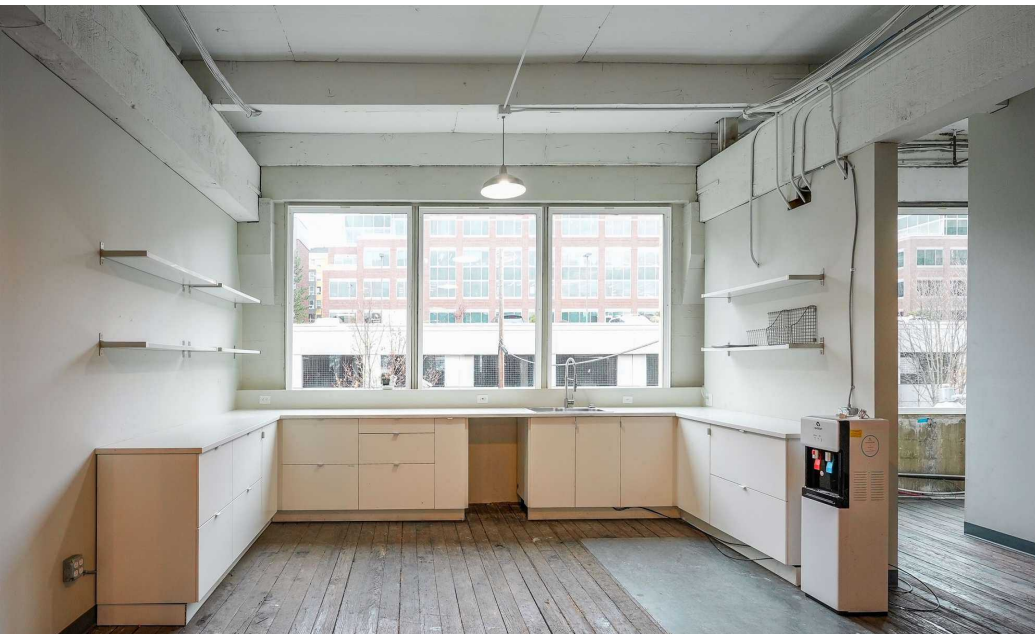
# CREATIVE OFFICE FOR LEASE



Second floor



Lake Union Views



Second floor kitchen



Second floor



CREATIVE OFFICE FOR LEASE



WORKING STATION



LOUNGE



TELEPHONE BOOTH



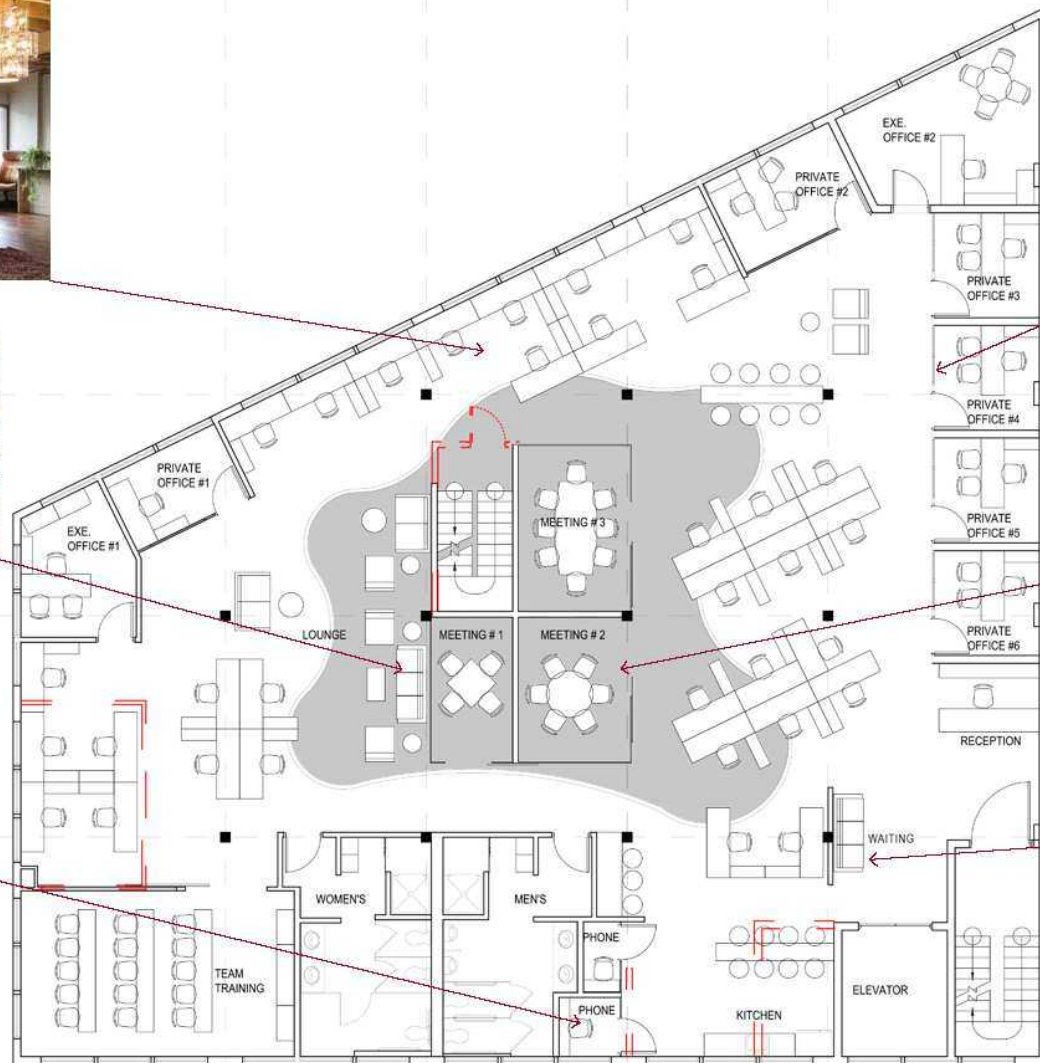
PRIVATE OFFICE



MEETING ROOM



WAITING AREA

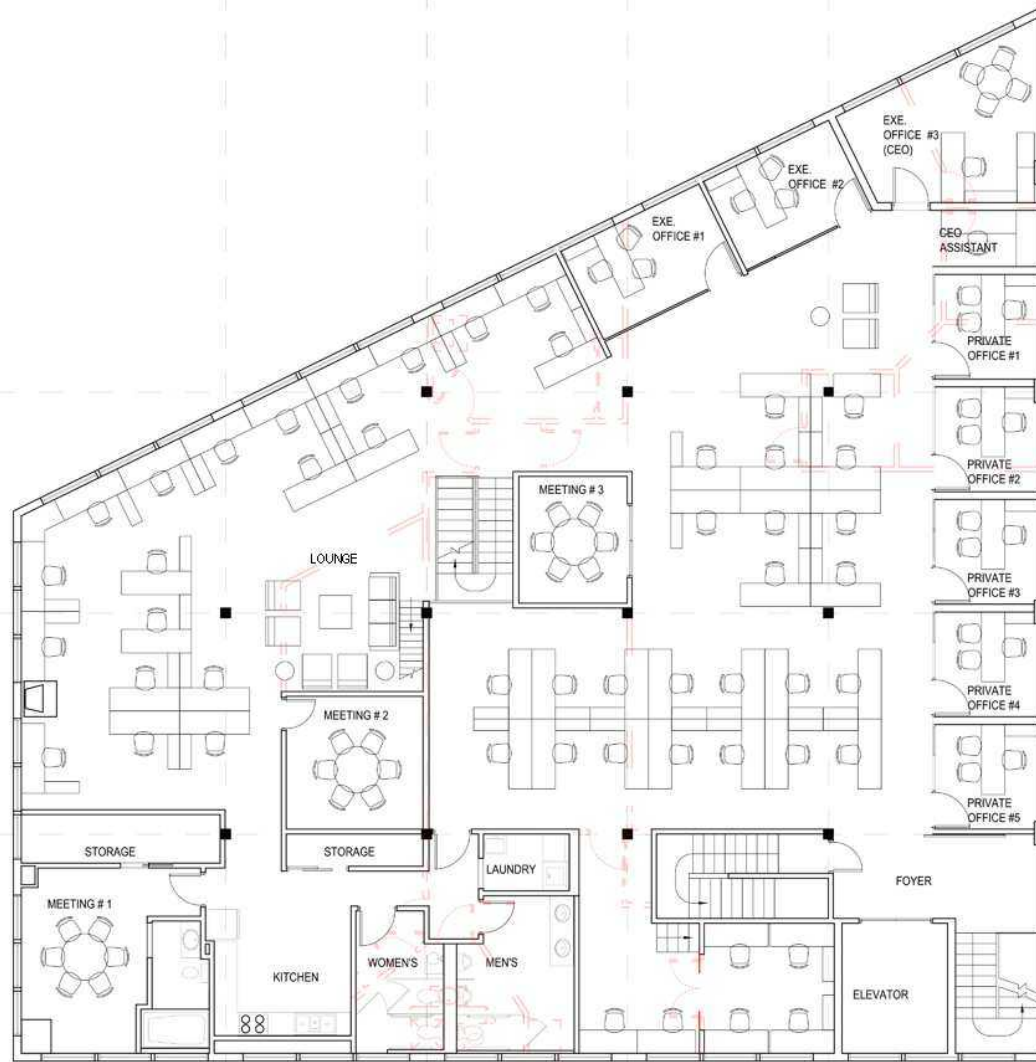


- 2 EXECUTIVE OFFICES
- 7 PRIVATE OFFICES
- 33 WORKING STATIONS
- 19 COUNTER SEATING
- 3 MEETING ROOMS
- 2 TELEPHONE BOOTH
- 1 TRAINING ROOM (15 SEATS)

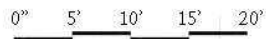
0" 5' 10' 15' 20'

SECOND FLOOR PLAN

# CREATIVE OFFICE FOR LEASE



- 3 EXECUTIVE OFFICES
- 5 PRIVATE OFFICES
- 54 WORKING STATIONS
- 3 MEETING ROOM



**THIRD FLOOR PLAN**



1001 WESTLAKE AVENUE NORTH, SEATTLE, WA 98109

# CREATIVE OFFICE FOR LEASE

