

SOUTH LAKE UNION
CREATIVE OFFICE WITH VIEWS

1001 Westlake Avenue North, Seattle, WA 98109

MAXIMUM
1-YEAR LEASE
TERM



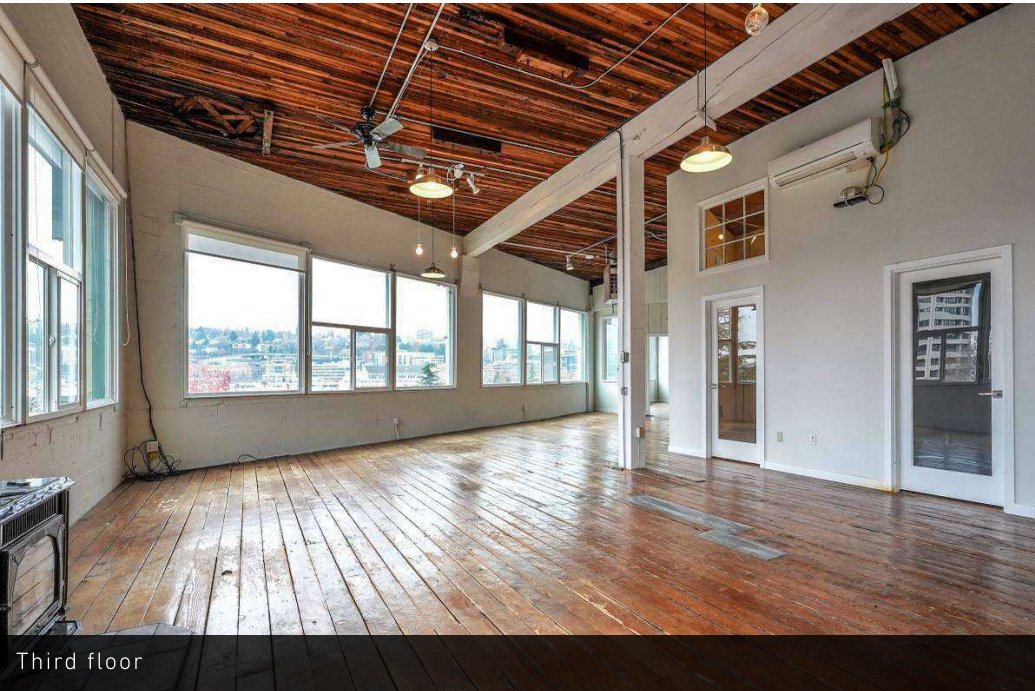
For more information please contact:

LAURA MILLER
laura@gibraltarusa.com
206.351.3573

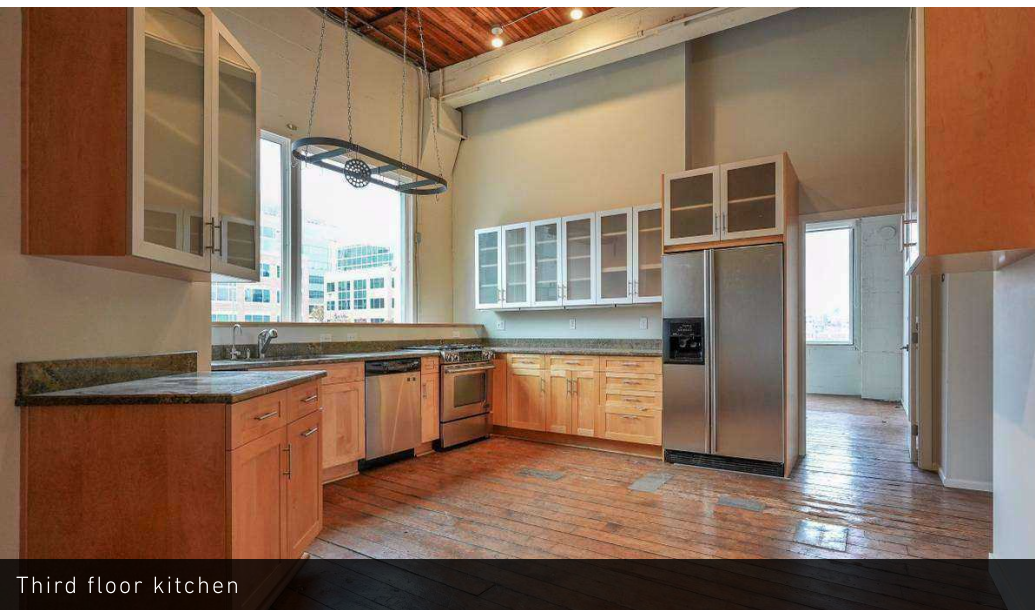


1001 WESTLAKE AVENUE NORTH, SEATTLE, WA 98109

CREATIVE OFFICE FOR LEASE



Third floor



Third floor kitchen

HIGHLIGHTS

- Available now. Full 2nd and 3rd (top two floors) floor creative offices located on the shores of the west side of Lake Union featuring stunning lake and city views
- Maximum 1-year lease term
- Each floor is 6,200 SF (can be leased together or separately)
- Character rich spaces features abundant natural light, giant windows, high ceilings, original wood floors, and HVAC
- Mix of large open work areas and private offices, conference rooms, kitchens
- Freight elevator and stair access (no passenger elevator)
- Two parking stalls
- Rental Rate: \$19.50/SF/YR + NNN (\$3.00/SF). HVAC and utilities included in NNN.



77

TRANSIT SCORE



93

WALK SCORE



92

BIKE SCORE



69,945

TOTAL POPULATION



43,708

TOTAL HOUSEHOLDS



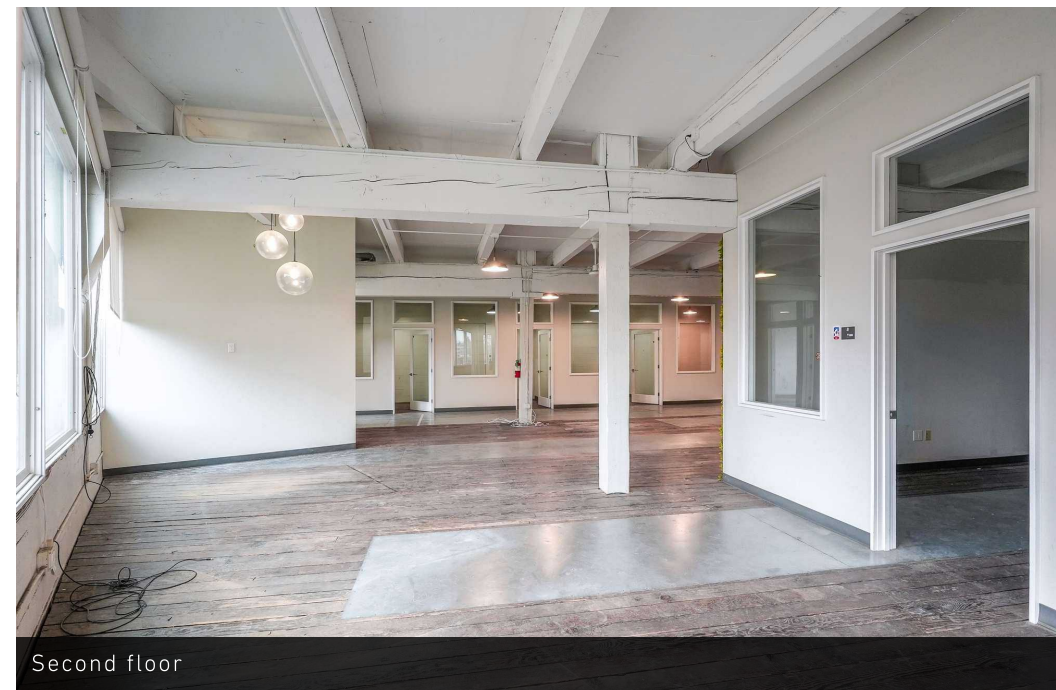
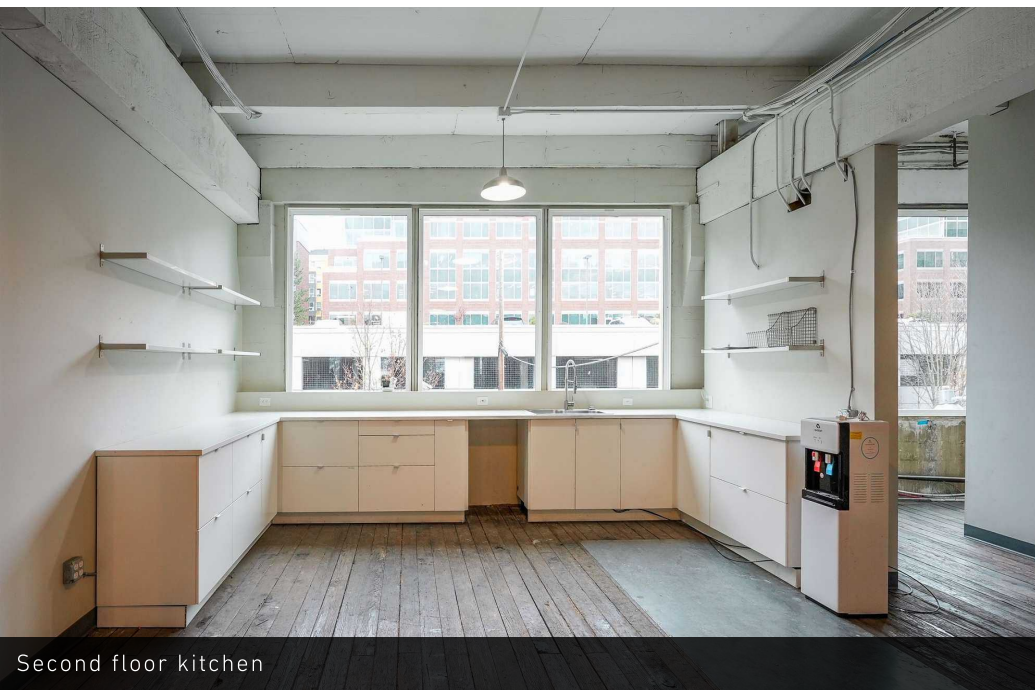
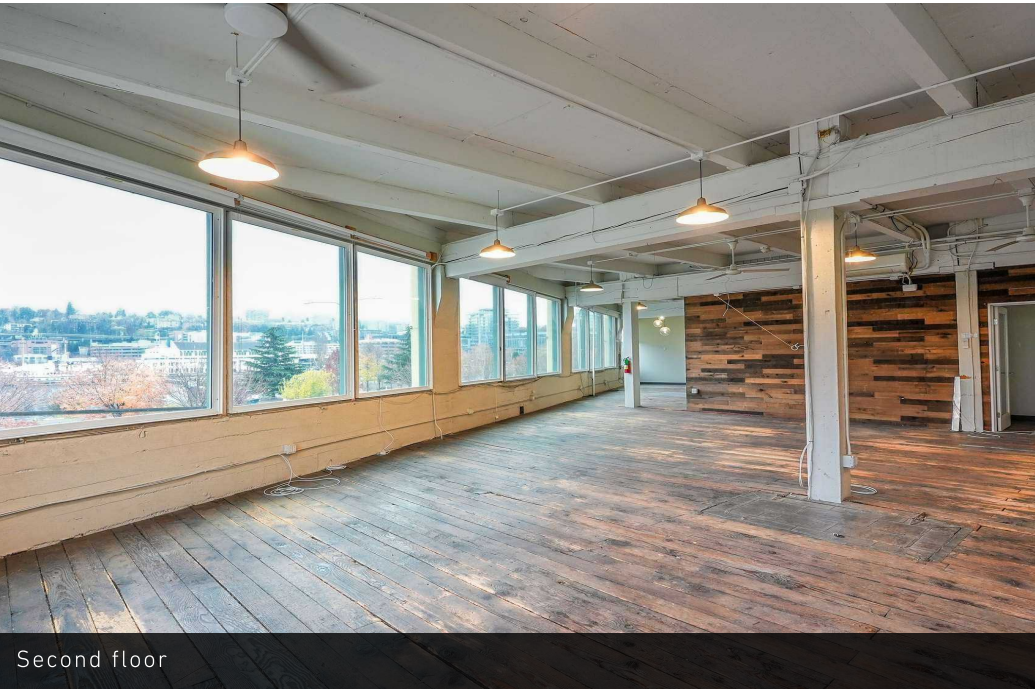
\$116,979

MEDIAN INCOME

* Demographic data derived from 2024, 1 mile radius

1001 WESTLAKE AVENUE NORTH, SEATTLE, WA 98109

CREATIVE OFFICE FOR LEASE



CREATIVE OFFICE FOR LEASE



WORKING STATION



LOUNGE



TELEPHONE BOOTH



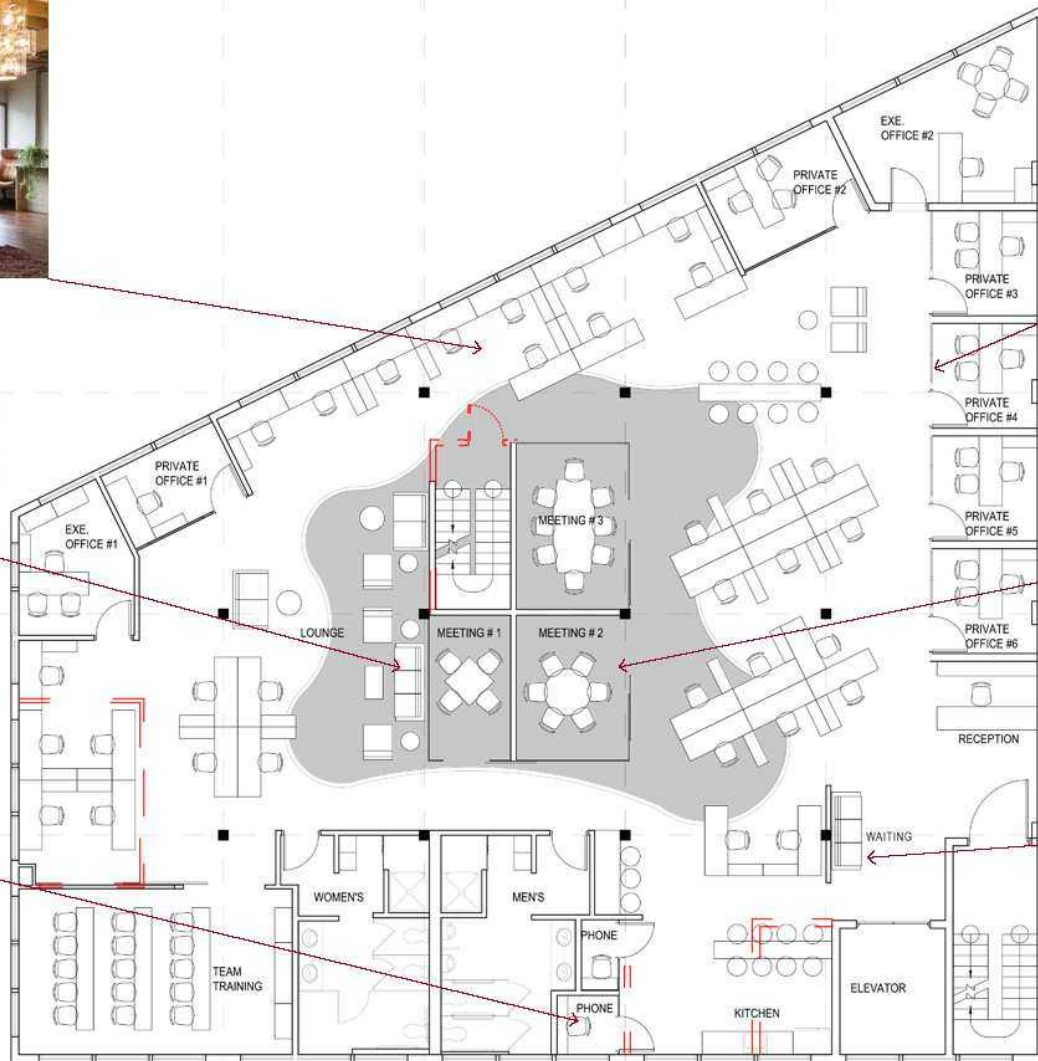
PRIVATE OFFICE



MEETING ROOM



WAITING AREA

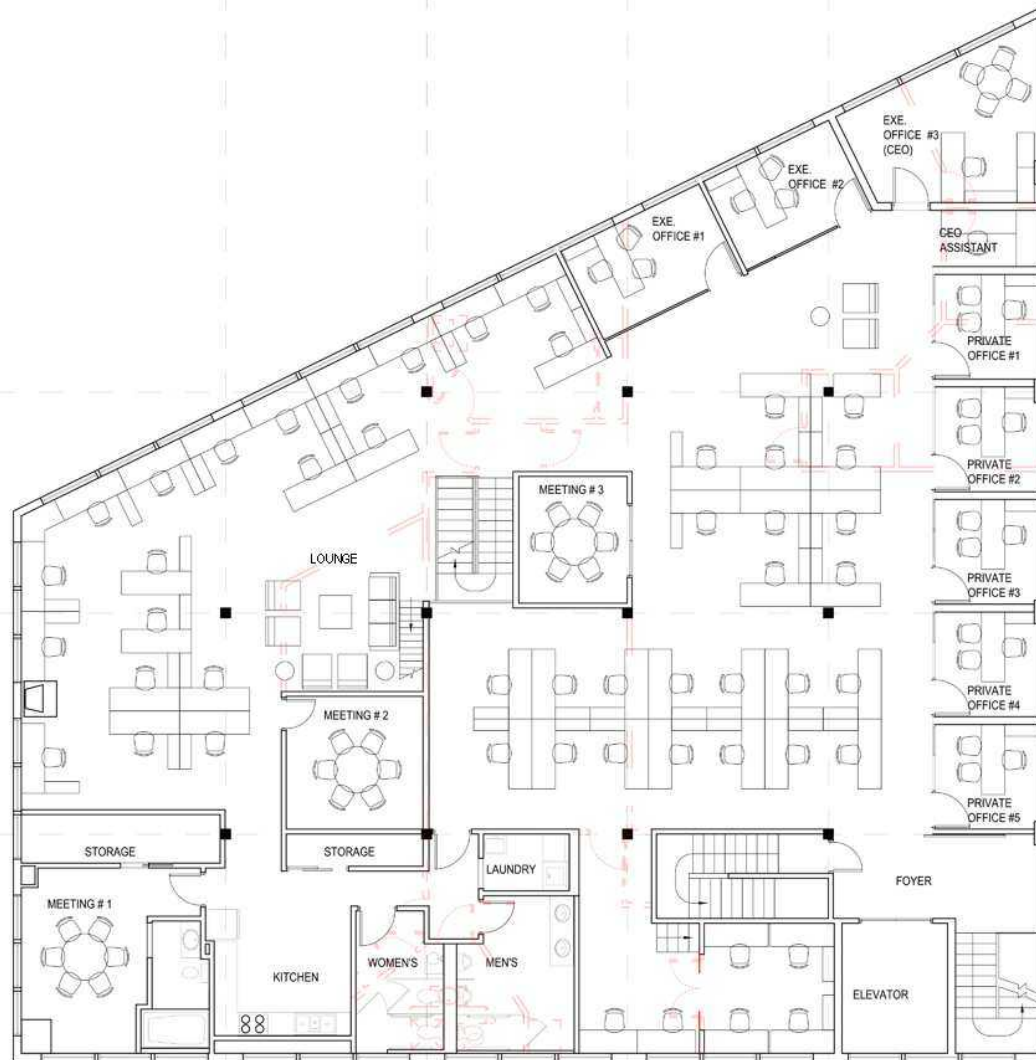


- 2 EXECUTIVE OFFICES
- 7 PRIVATE OFFICES
- 33 WORKING STATIONS
- 19 COUNTER SEATING
- 3 MEETING ROOMS
- 2 TELEPHONE BOOTH
- 1 TRAINING ROOM (15 SEATS)

0" 5' 10' 15' 20'

SECOND FLOOR PLAN

CREATIVE OFFICE FOR LEASE



- 3 EXECUTIVE OFFICES
- 5 PRIVATE OFFICES
- 54 WORKING STATIONS
- 3 MEETING ROOM

0' 5' 10' 15' 20'

THIRD FLOOR PLAN

1001 WESTLAKE AVENUE NORTH, SEATTLE, WA 98109

CREATIVE OFFICE FOR LEASE

