



# BELLEVUE MEDICAL PARK

1600 116TH AVENUE NE, BELLEVUE WASHINGTON



## FEATURES

- Located directly adjacent to Children's Hospital
- Walking distance to Overlake Hospital & Kaiser Permanente
- Walk up office with easy parking directly at front door
- Full medical build-out
- 5 exam rooms, multiple doctor offices or consult rooms, staff lounge, reception & waiting area

## LEASE INFORMATION

Lease Type	NNN (\$14.80/SF)
Available	08/01/2024
Rent	\$35.00/SF
Available Space	1,873 SF
<i>Suite 206</i>	



## JAY AZOSE

425-974-4203  
206-650-4100  
jazose@azose.com



**Azose**  
COMMERCIAL  
PROPERTIES

## MICHAEL AZOSE

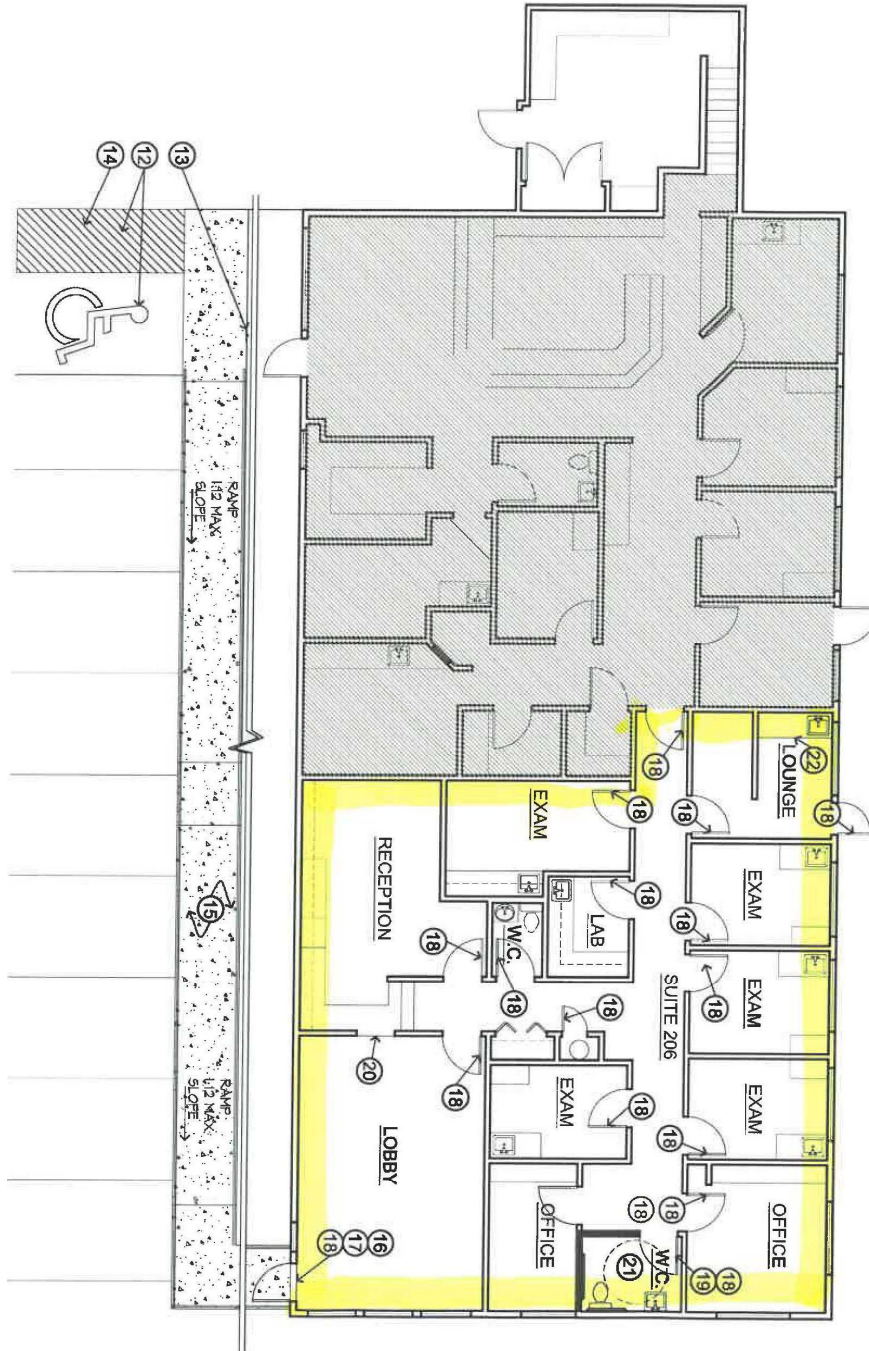
425.974.4236  
206.856.7576  
mazose@azose.com

OFFICE FOR LEASE



# BELLEVUE MEDICAL PARK

1600 116TH AVENUE NE, BELLEVUE WASHINGTON



**JAY AZOSE**

425-974-4203

206-650-4100

jazose@azose.com



**Azose**  
COMMERCIAL  
PROPERTIES

**MICHAEL AZOSE**

425.974.4236

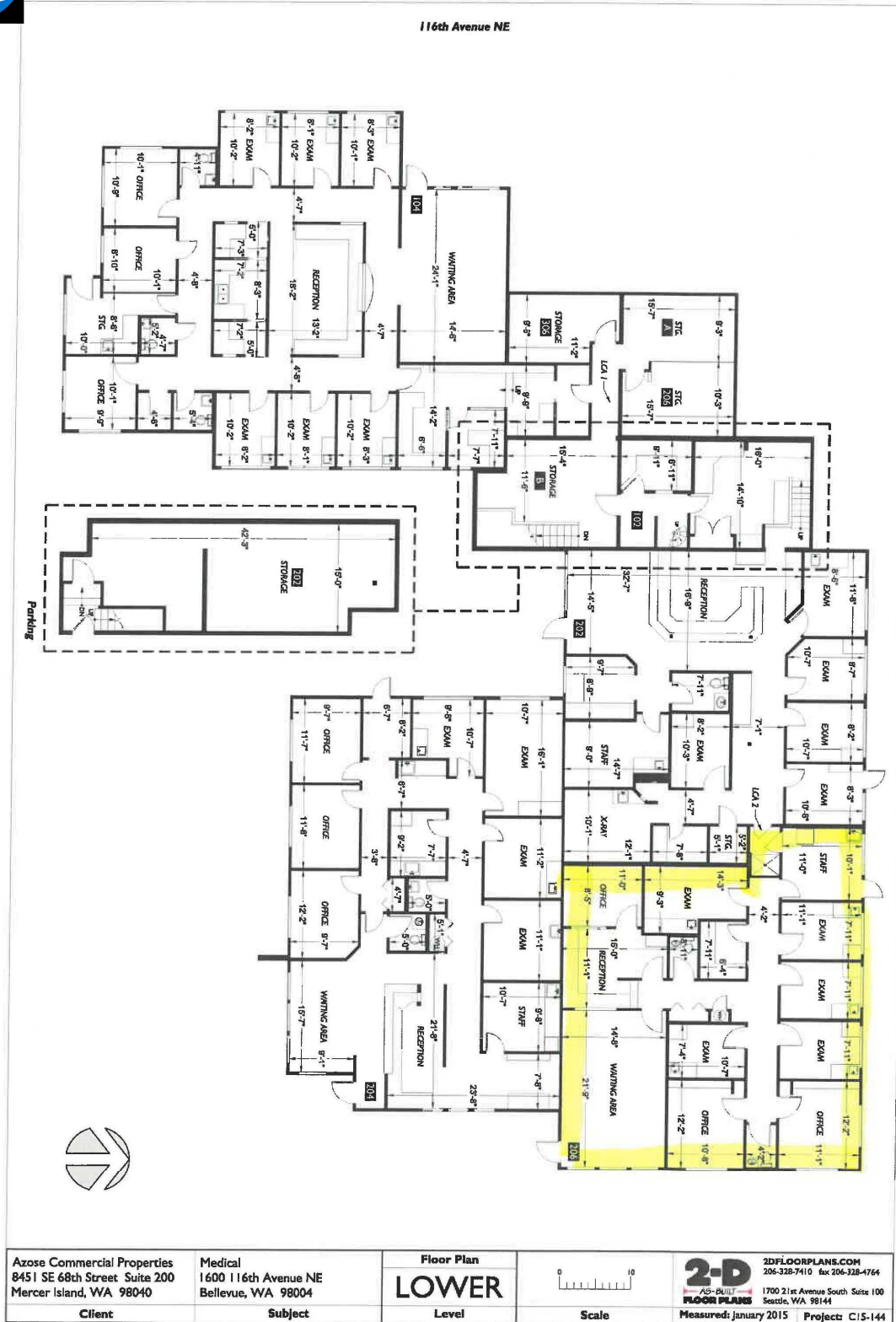
206.856.7576

mazose@azose.com



# BELLEVUE MEDICAL PARK

1600 116TH AVENUE NE, BELLEVUE WASHINGTON



**JAY AZOSE**  
 425-974-4203  
 206-650-4100  
 jazose@azose.com



**MICHAEL AZOSE**  
 425.974.4236