

**SUBJECT
PROPERTY**

PACIFIC FRONTAGE ROAD YARD SITE

INDUSTRIAL FOR LEASE

1.07 acres of land

Zoned IL - Light Industrial (City of Pacific)

Fenced, graveled, partially paved and lit

Two points of ingress/egress

Great exposure and immediate access to SR-167

\$0.35 PSF, gross

Available June 1, 2024

*For more leasing
information
contact*

THAD MALLORY, SIOB
Newmark
425.632.1410
thad.mallory@nwmk.com

TRAVIS STANAWAY
Kidder Mathews
206.248.6526
travis.stanaway@kidder.com

KIDDER.COM

This information supplied herein is from sources we deem reliable. It is provided without any representation, warranty, or guarantee, expressed or implied as to its accuracy. Prospective Buyer or Tenant should conduct an independent investigation and verification of all matters deemed to be material, including, but not limited to, statements of income and expenses. Consult your attorney, accountant, or other professional advisor.

PACIFIC FRONTAGE ROAD YARD SITE



2 MIN

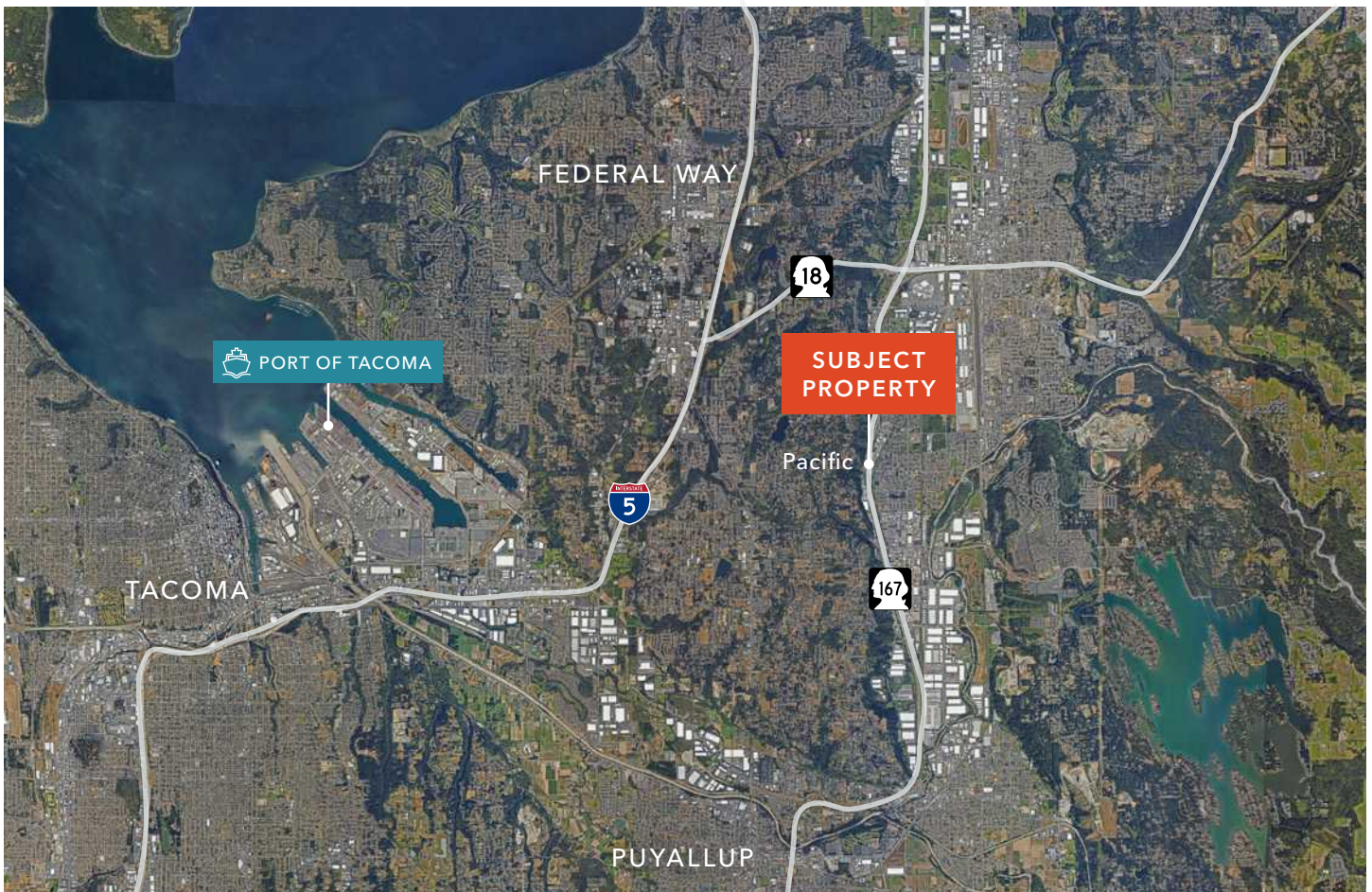
TO SR-167

11 MIN

TO I-5

21 MIN

TO PORT OF TACOMA



KIDDER.COM

This information supplied herein is from sources we deem reliable. It is provided without any representation, warranty, or guarantee, expressed or implied as to its accuracy. Prospective Buyer or Tenant should conduct an independent investigation and verification of all matters deemed to be material, including, but not limited to, statements of income and expenses. Consult your attorney, accountant, or other professional advisor.

NEWMARK

km Kidder Mathews