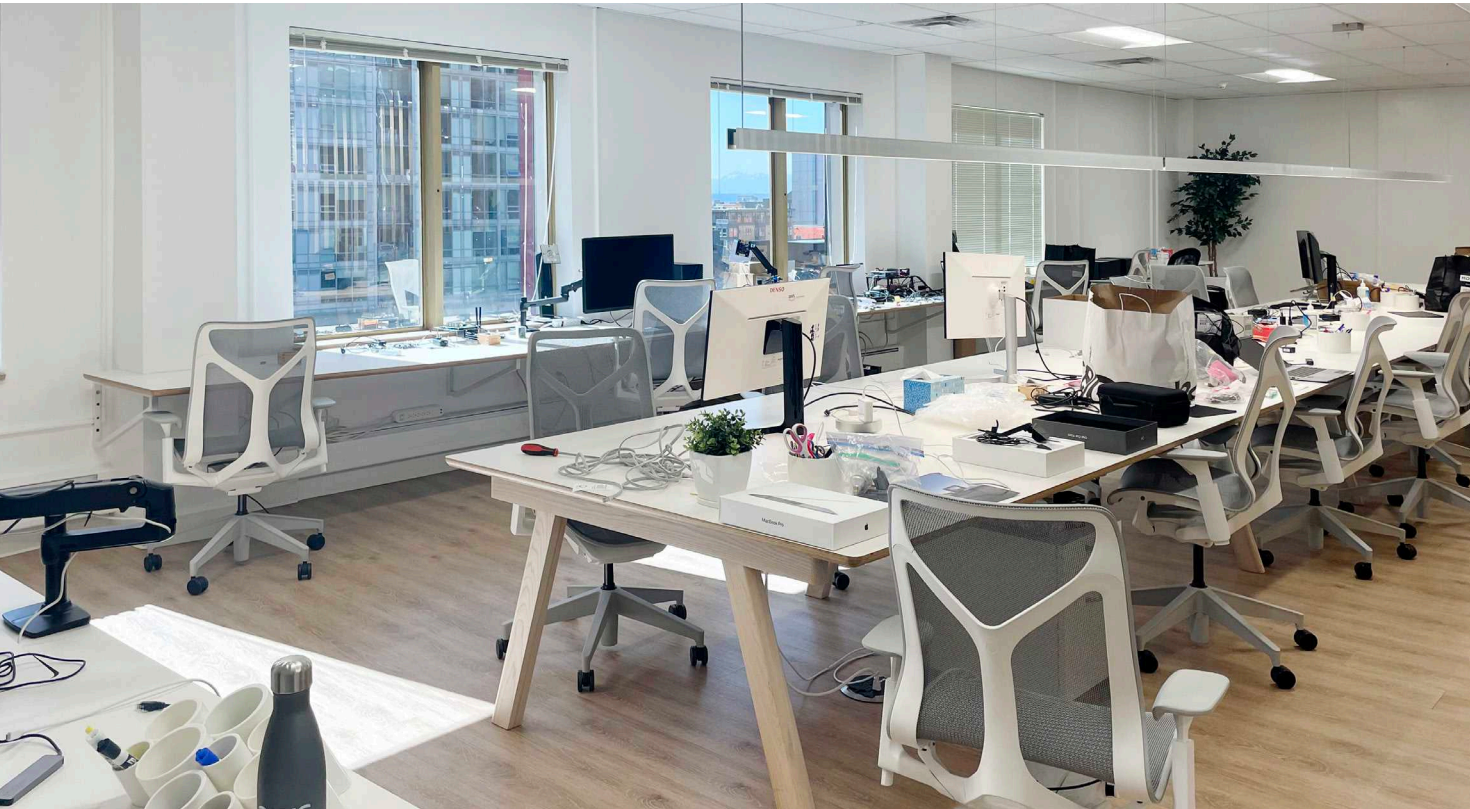


SIXTH & LENORA SUBLEASE

2033 6th Avenue | Suite 800 | Seattle, WA 98121



Suite 800 – 3,681/SSF



Short term sublease with the ability to go direct with ownership



Open floorplan with two conference rooms and kitchen



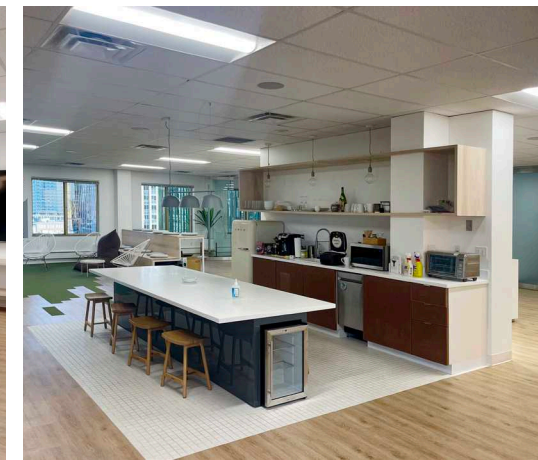
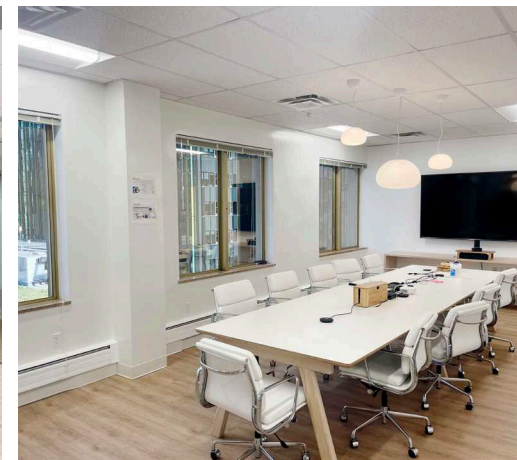
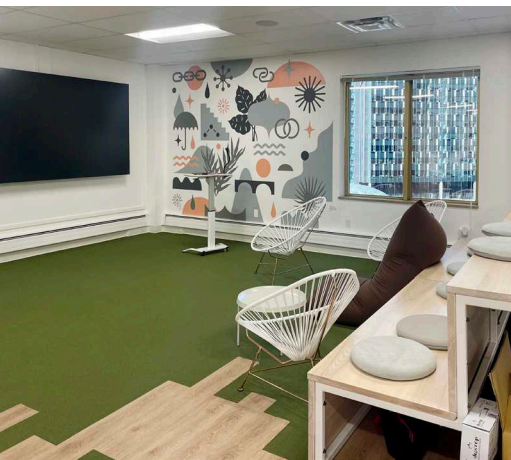
Located in the heart of South Lake Union



Available now through 12/31/24

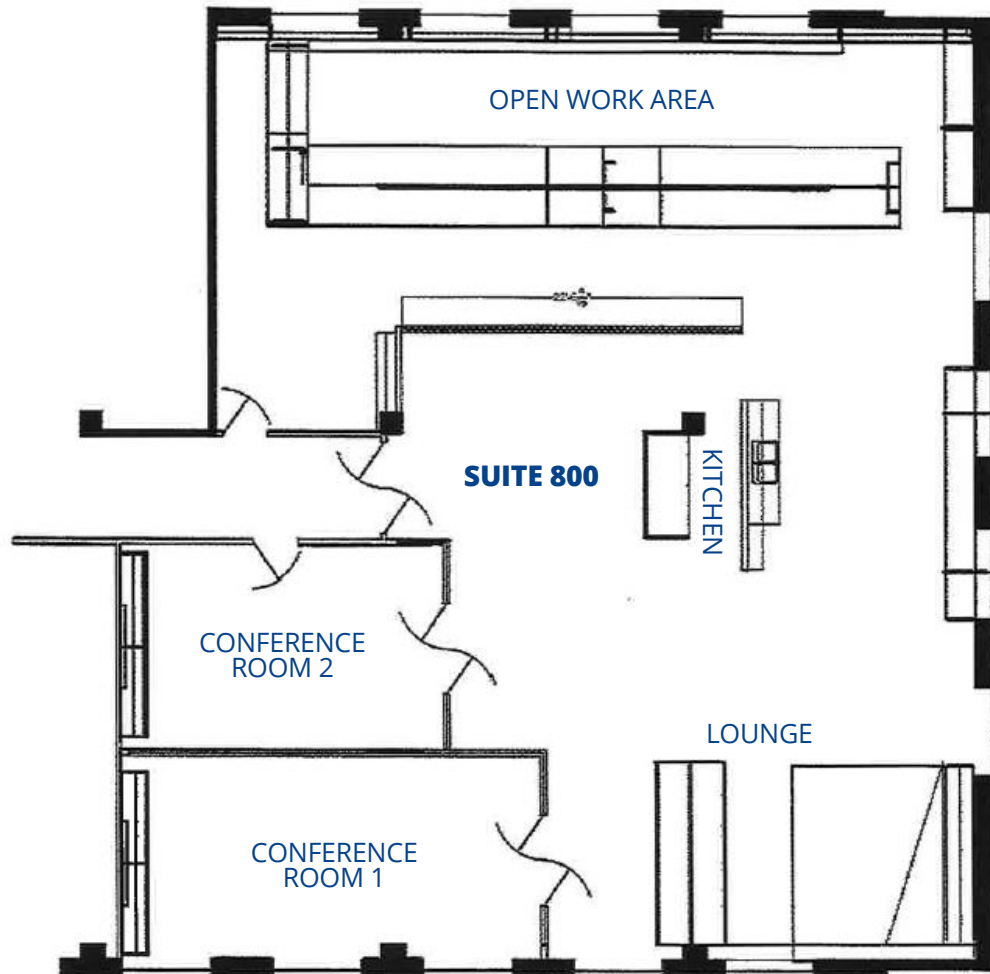


Call broker for rates



SIXTH & LENORA SUBLEASE

2033 6th Avenue | Suite 800 | Seattle, WA 98121



THE PERFECT LOCATION FOR A MODERN WORKFORCE

Located where the CBD, Belltown, and the Denny Triangle meet, Sixth & Lenora has some of Seattle's best options for dining, shopping, nightlife, culture, and outdoor activities right on its doorstep.



Joe Conner
Associate
Mob +1 425 698 7142
joe.conner@colliers.com

Connor McClain
Senior Vice President
Mob +1 425 785 5660
connor.mcclain@colliers.com

This document has been prepared by Colliers International for advertising and general information only. Colliers International makes no guarantees, representations or warranties of any kind, express or implied, regarding the information including but not limited to, warranties of content, accuracy and reliability. Any interested party should undertake their own inquiries as to the accuracy of the information. Colliers International excludes unequivocally all inferred or implied terms, conditions and warranties arising out of this document and excludes all liability for loss and damages arising therefrom. This publication is the copyrighted property of Colliers International and/or its licensor(s). © 2024. All rights reserved.