

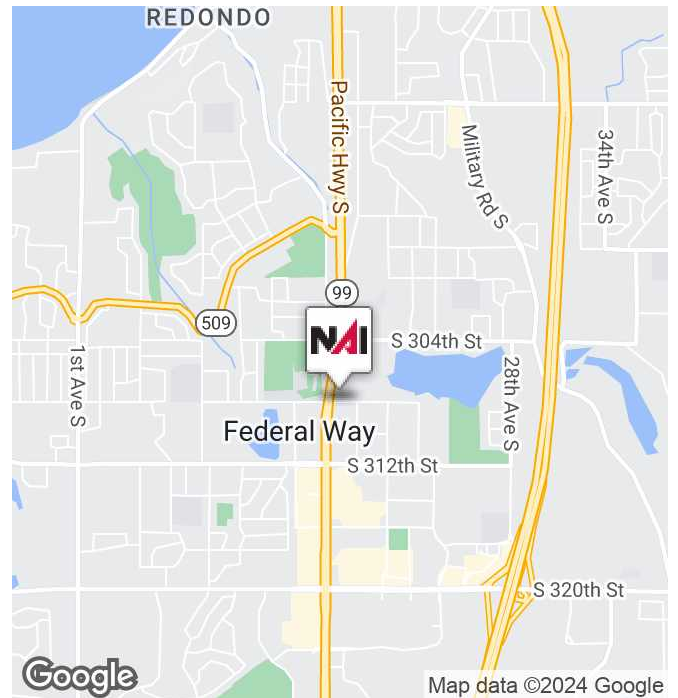


# Golden Plaza

30800 Pacific Highway S  
Federal Way, WA 98003

## Property Highlights

- 2,673 SF Office Space
- Formerly Occupied by Urgent Care Medical Clinic
- Direct Access to Highway 99
- Ample Parking
- End-Cap Unit with Frontage/Visibility Along Hwy 99
- \$20.00/SF/Yr. plus NNN
- NNN charges: \$6.00/SF annually



DEMOGRAPHICS	1 MILE	3 MILES	5 MILES
Total Population	15,165	100,901	222,393
Average HH Income	\$70,320	\$84,333	\$85,287

**Kyle Sterling**

Partner | 425.586.5608  
ksterling@nai-psp.com

**Nick Bierly**

Vice President | 425.586.5631  
nbierly@nai-psp.com





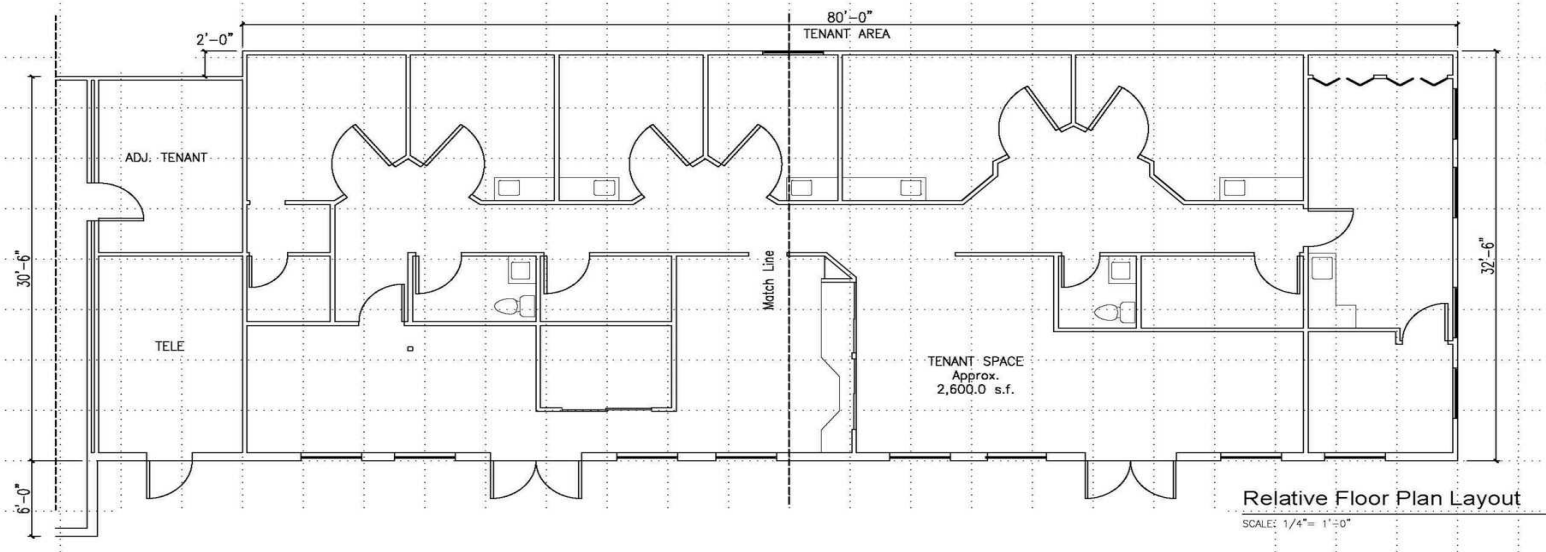
FOR LEASE



RETAIL/OFFICE



2,673 SF



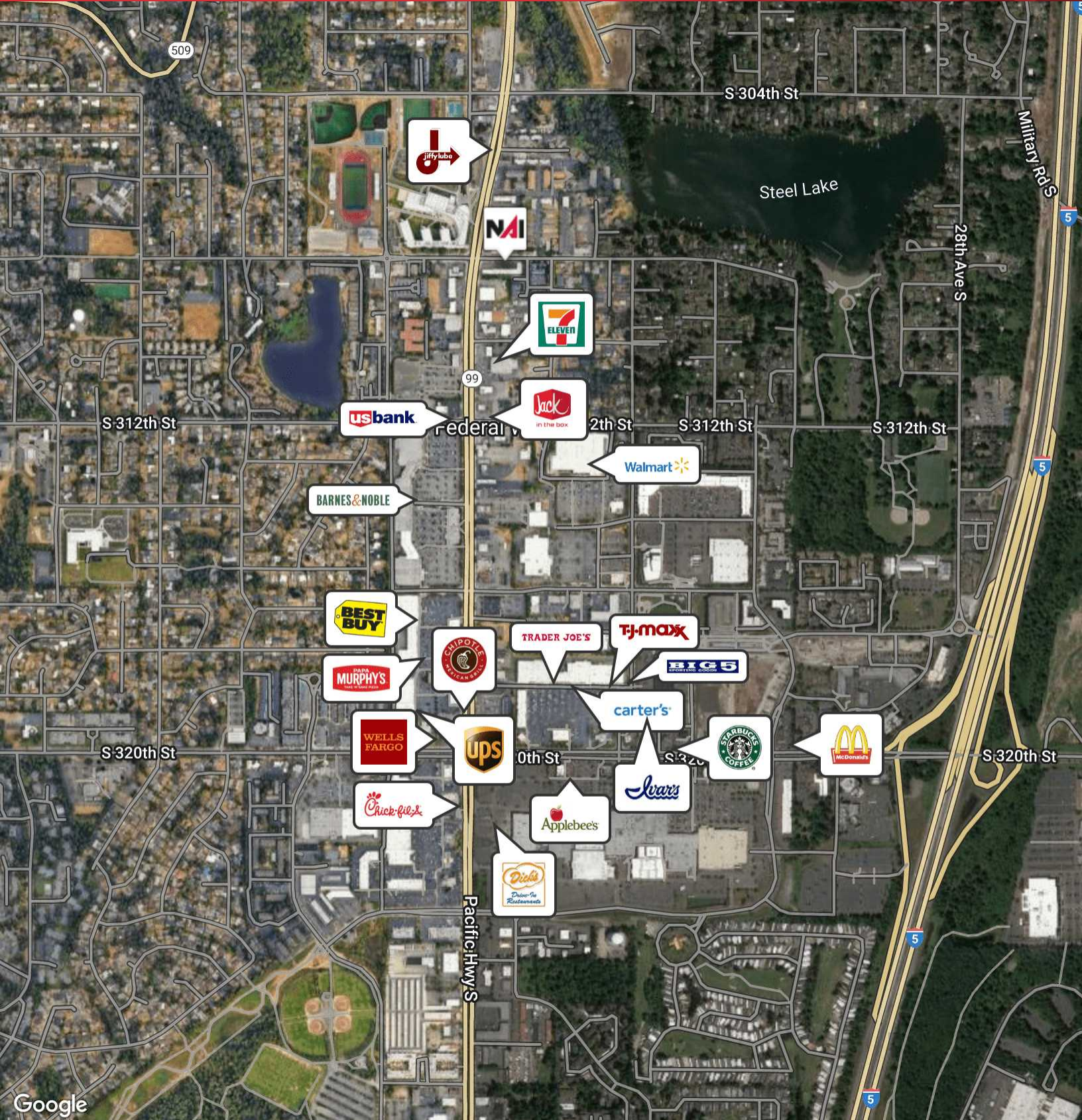
**Kyle Sterling**  
Partner | 425.586.5608  
ksterling@nai-psp.com

**Nick Bierly**  
Vice President | 425.586.5631  
nbierly@nai-psp.com



<https://www.nai-psp.com>

THE INFORMATION SUPPLIED HEREIN IS FROM SOURCES WE DEEM RELIABLE. IT IS PROVIDED WITHOUT ANY REPRESENTATION, WARRANTY OR GUARANTEE, EXPRESSED OR IMPLIED, AS TO ITS ACCURACY. PROSPECTIVE BUYER OR TENANT SHOULD CONDUCT AN INDEPENDENT INVESTIGATION AND VERIFICATION OF ALL MATTERS DEEMED TO BE MATERIAL, INCLUDING, BUT NOT LIMITED TO, STATEMENTS OF INCOME AND EXPENSES. CONSULT YOUR ATTORNEY, ACCOUNTANT OR OTHER PROFESSIONAL ADVISOR.



**Kyle Sterling**  
 Partner | 425.586.5608  
 ksterling@nai-psp.com

**Nick Bierly**  
 Vice President | 425.586.5631  
 nbierly@nai-psp.com

