

# LACEY BUSINESS PARK

9045 ORION DR NE | LACEY, WA



*Lacey warehouse with excellent access to I-5*

Suite G: 10,248 SF | Suite H: 7,043 SF

Combined: 17,291 SF

24' clear height

3-phase power

Concrete truck courts

\$0.90 PSF shell rate

\$1.40 PSF office rate

**EVAN PARKER**  
360.705.0174  
evan.parker@kidder.com

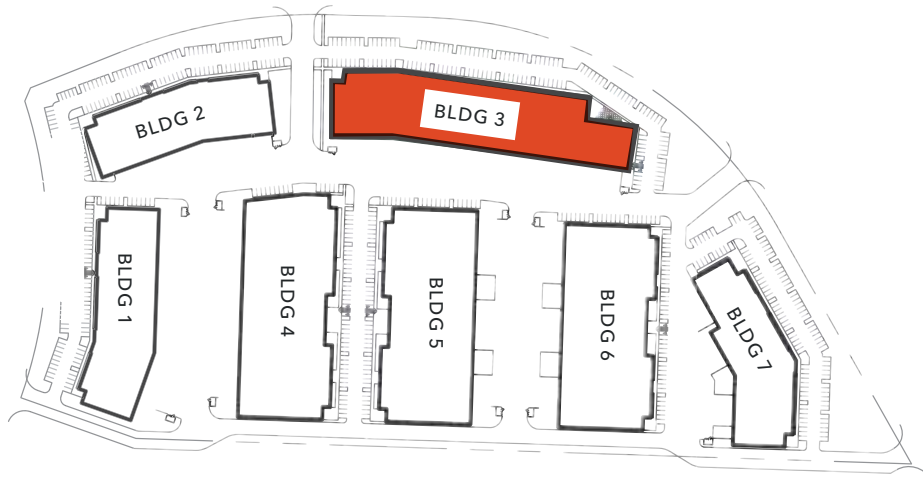
**AMY HARDING**  
360.705.1337  
amy.harding@kidder.com

**KIDDER.COM**

This information supplied herein is from sources we deem reliable. It is provided without any representation, warranty, or guarantee, expressed or implied as to its accuracy. Prospective Buyer or Tenant should conduct an independent investigation and verification of all matters deemed to be material, including, but not limited to, statements of income and expenses. Consult your attorney, accountant, or other professional advisor.



# LACEY BUSINESS PARK



LACEY BUSINESS PARK SITE PLAN

**\$0.90**

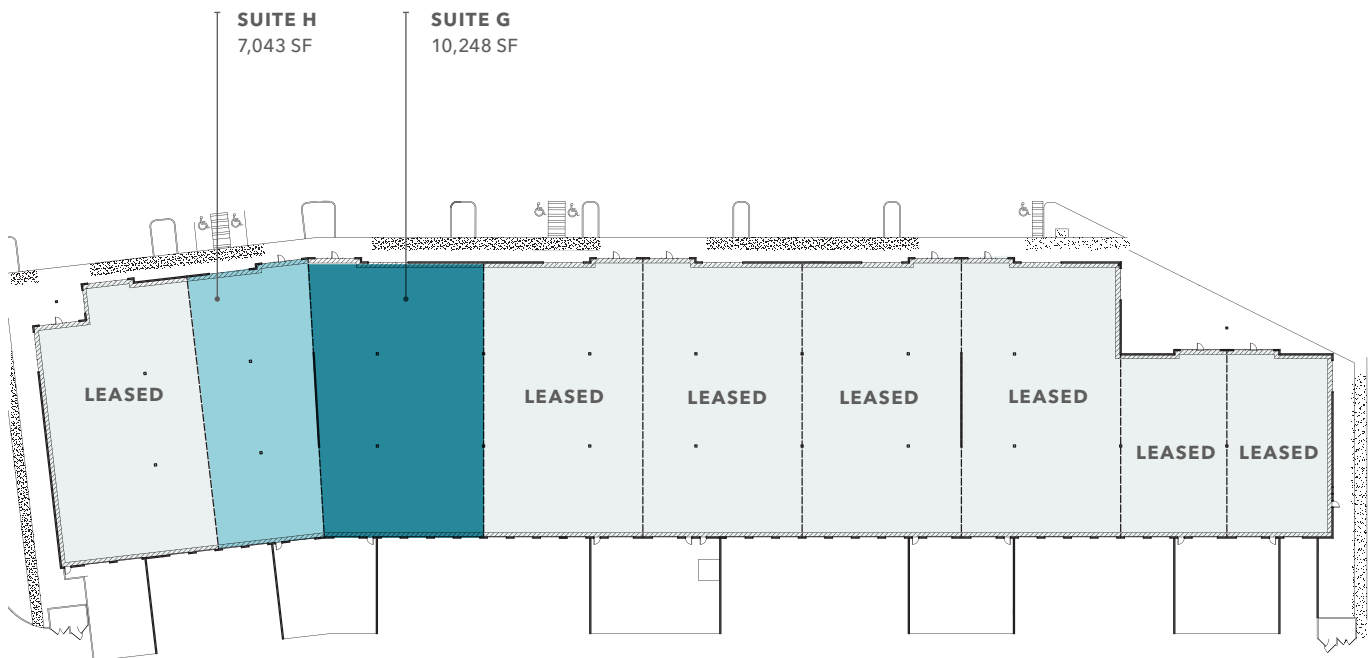
SHELL RATE

**\$1.40**

OFFICE RATE

**NOW**

AVAILABLE



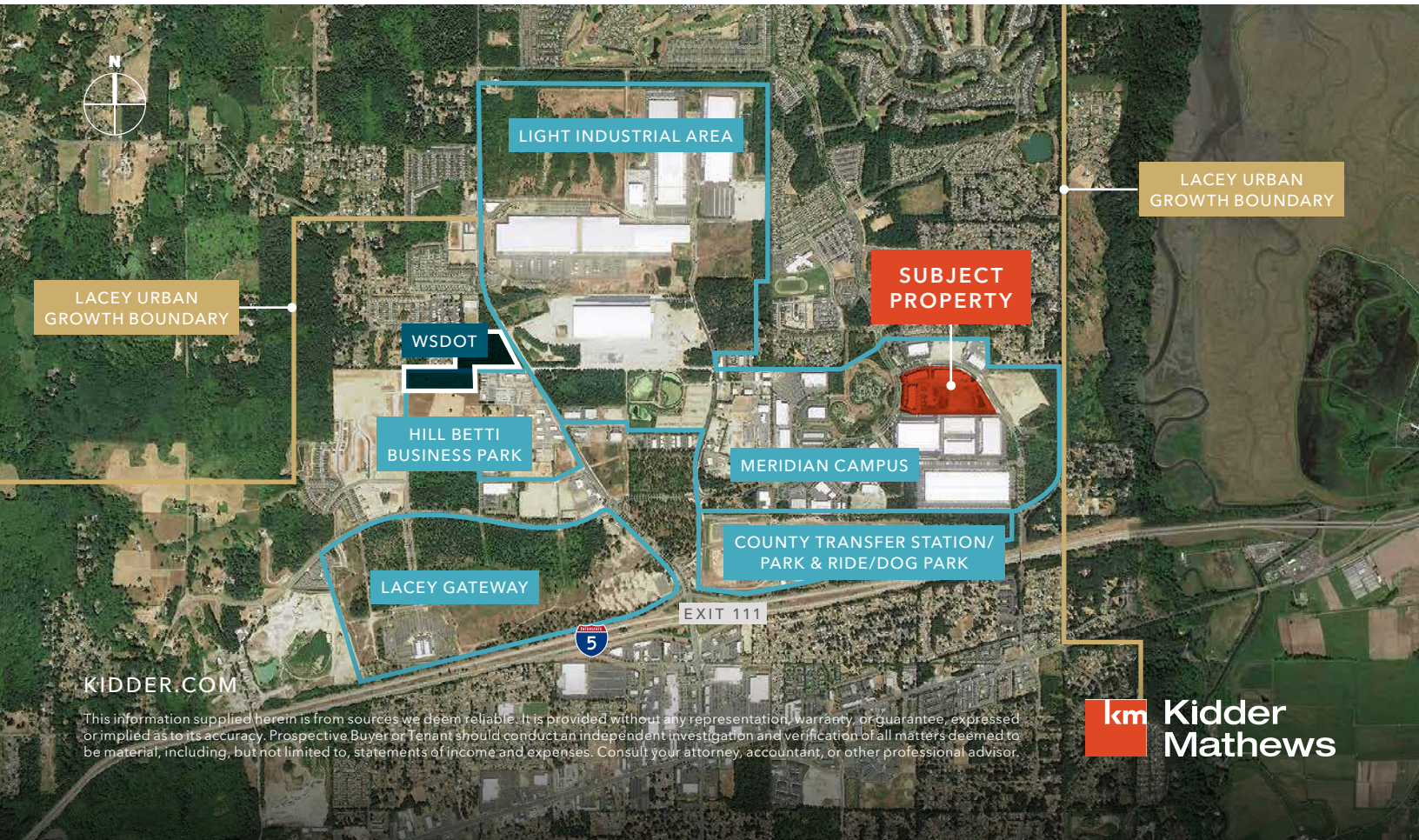
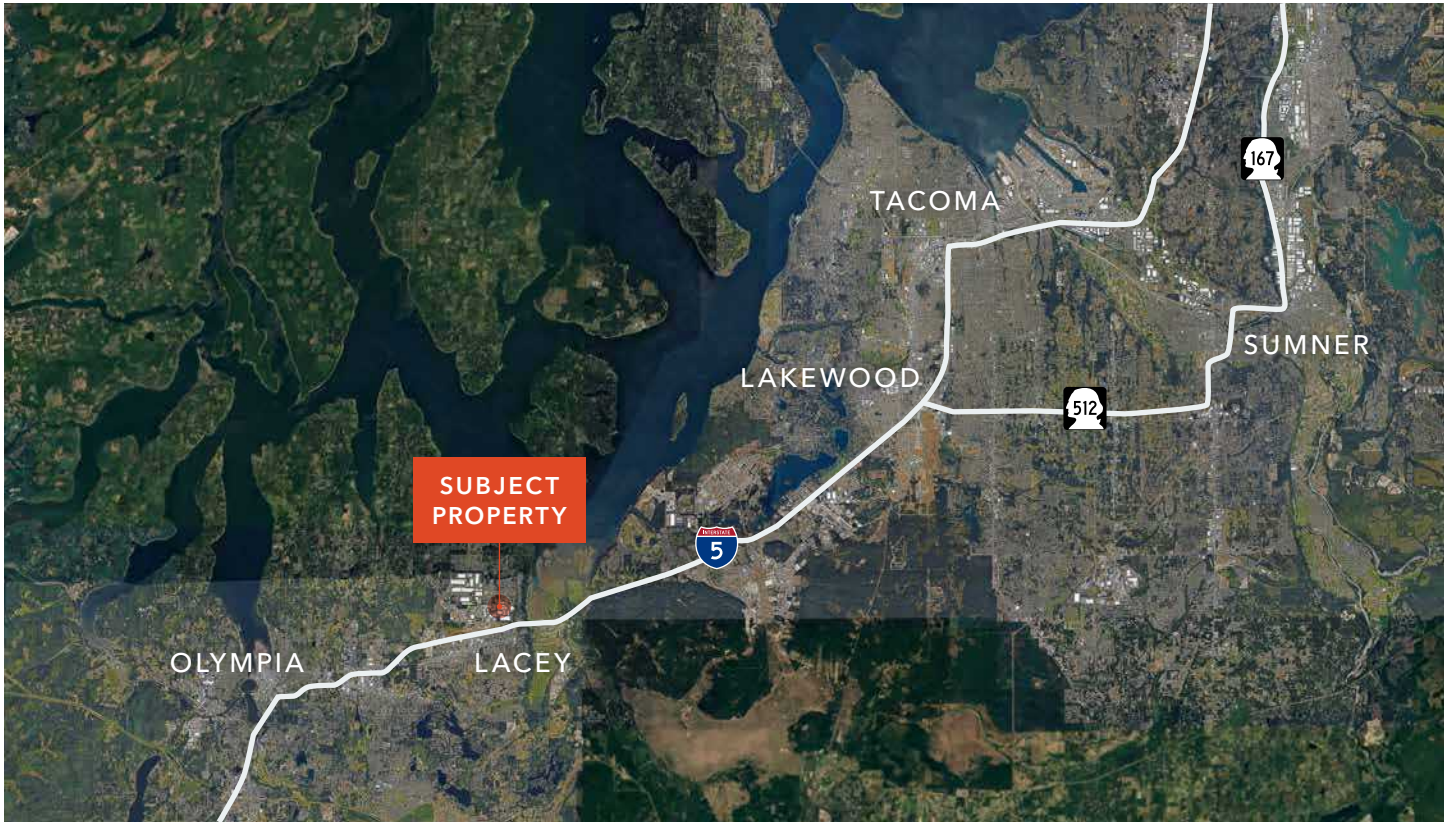
LACEY BUSINESS PARK: BUILDING 3 FLOOR PLAN

[KIDDER.COM](http://KIDDER.COM)

This information supplied herein is from sources we deem reliable. It is provided without any representation, warranty, or guarantee, expressed or implied as to its accuracy. Prospective Buyer or Tenant should conduct an independent investigation and verification of all matters deemed to be material, including, but not limited to, statements of income and expenses. Consult your attorney, accountant, or other professional advisor.



# LACEY BUSINESS PARK



This information supplied herein is from sources we deem reliable. It is provided without any representation, warranty, or guarantee, expressed or implied as to its accuracy. Prospective Buyer or Tenant should conduct an independent investigation and verification of all matters deemed to be material, including, but not limited to, statements of income and expenses. Consult your attorney, accountant, or other professional advisor.