

# Riverfront Technical Park

## 2811 South 102<sup>nd</sup>, Floor 2

**TOTAL AVAILABLE SPACE**

SUITE 200 – 14,183 RSF



**IDEAL FOR OFFICE, RESEARCH & DEVELOPMENT  
AND CALL CENTERS**

**NEWMARK**

**Thad Mallory, SIOR**  
Vice Chairman  
425.362.1410  
thad.mallory@nmrk.com

**Cavan O'Keefe**  
Senior Managing Director  
206.395.2903  
cavan.okeefe@nmrk.com

**Jesse Ottele**  
Executive Managing Director  
206.452.5429  
jesse.ottele@nmrk.com

**sabey**

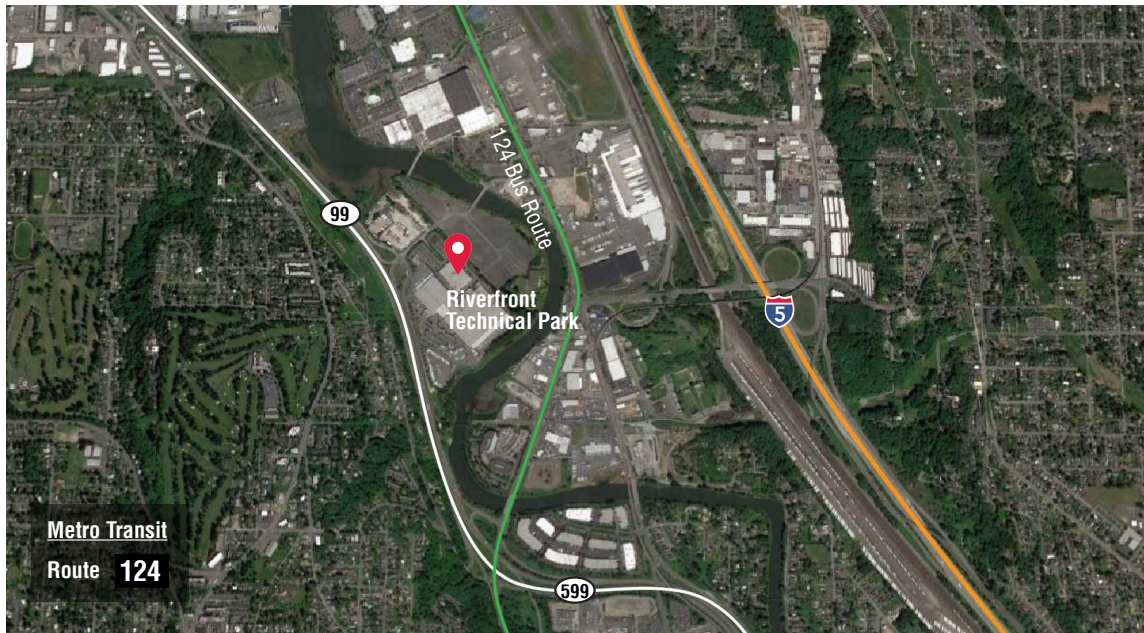
12201 Tukwila International Blvd. 4th Floor  
Seattle, WA 98168

# Riverfront Technical Park

## 2811 South 102<sup>nd</sup>, Floor 2

**TOTAL AVAILABLE SPACE**

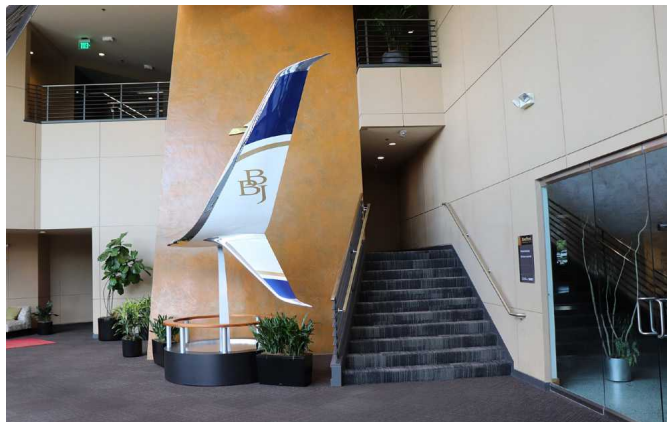
SUITE 200 – 14,183 RSF



Riverfront Technical park is a 175,000 SF office/flex building located in the South Seattle area, with easy access to I-5, I-405, Hwy 99 and East Marginal Way. It's proximity to Boeing Field has made it attractive to the aeronautics industry. In addition to great location, Riverfront Technical offers excellent parking and heavy electrical infrastructure making it also ideal for office, research & development and call centers.

### Highlights

- Ample contiguous square footage
- Minutes to downtown Seattle, SeaTac Airport and Boeing Field
- Abundant parking
- Secure card access
- Multiple fiber carriers
- Loading dock
- Immediately adjacent to US Post Office



**CLOSE PROXIMITY TO  
BOEING FIELD**

**NEWMARK**

**Thad Mallory, SIOR**  
Vice Chairman  
425.362.1410  
thad.mallory@nmrk.com

**Cavan O'Keefe**  
Senior Managing Director  
206.395.2903  
cavan.okeefe@nmrk.com

**Jesse Ottele**  
Executive Managing Director  
206.452.5429  
jesse.ottele@nmrk.com

**sabey**

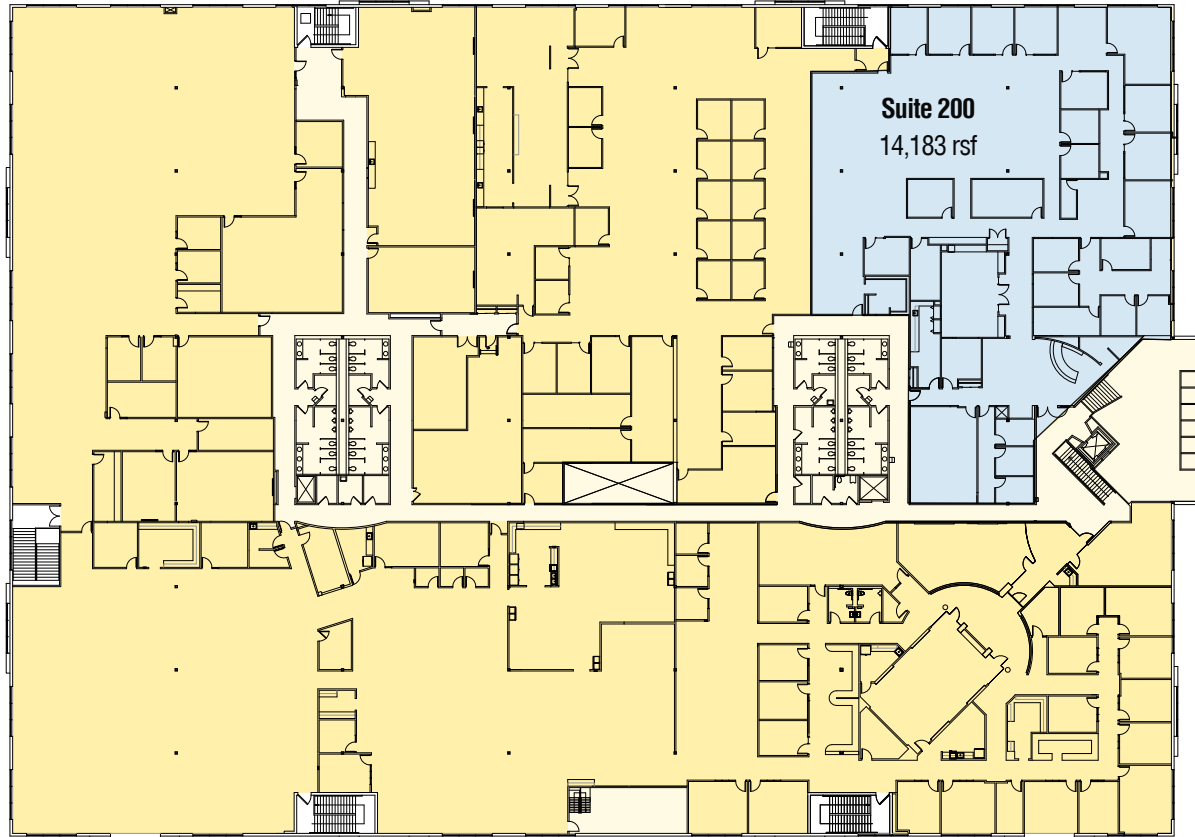
12201 Tukwila International Blvd. 4th Floor  
Seattle, WA 98168

# Riverfront Technical Park




## 2811 South 102<sup>nd</sup>, Floor 2

**TOTAL AVAILABLE SPACE**

SUITE 200 – 14,183 RSF



**Floor 2** | Available space - 14,183 rsf

 Total Available Space     Leased     Common Area