

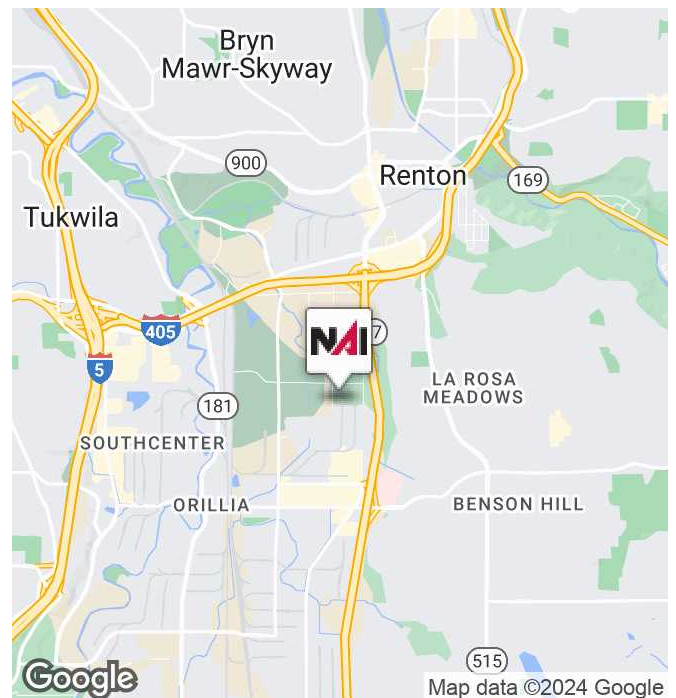


## 2900 Lind Avenue SW

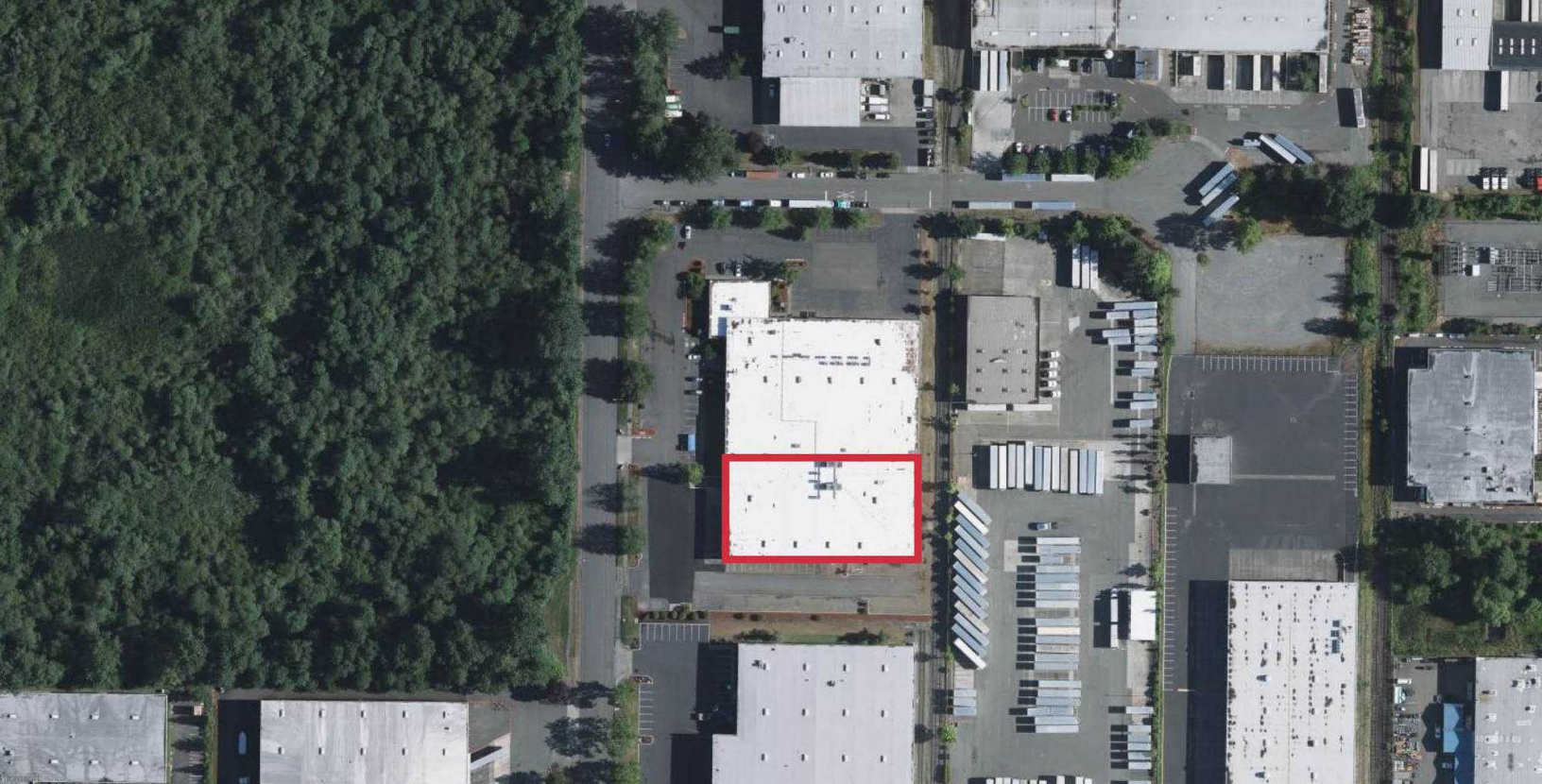
Renton, Washington 98057

### Property Highlights

- 40,000 SF
- 1,350 Mezzanine office
- 18' Clear Height
- 1 Dock High Door
- 2 Oversized Grade Level Doors
- Covered loading platform provides additional Dock High Loading
- \$1.15 PSF Full Service (NNN's, water, gas & electricity included in monthly rent)
- Sublease term of 1-2 years preferred
- Available June 1, 2024







**Kent Channing**  
Partner | 425.586.5628  
kchanning@nai-psp.com

