



1109 North 36th Street

Seattle, WA



—
—
—
—
—
—
\$30.00 RSF
Full Service

Property Highlights

Sublease through December 31, 2026

Tech Buildout

Furniture - Negotiable

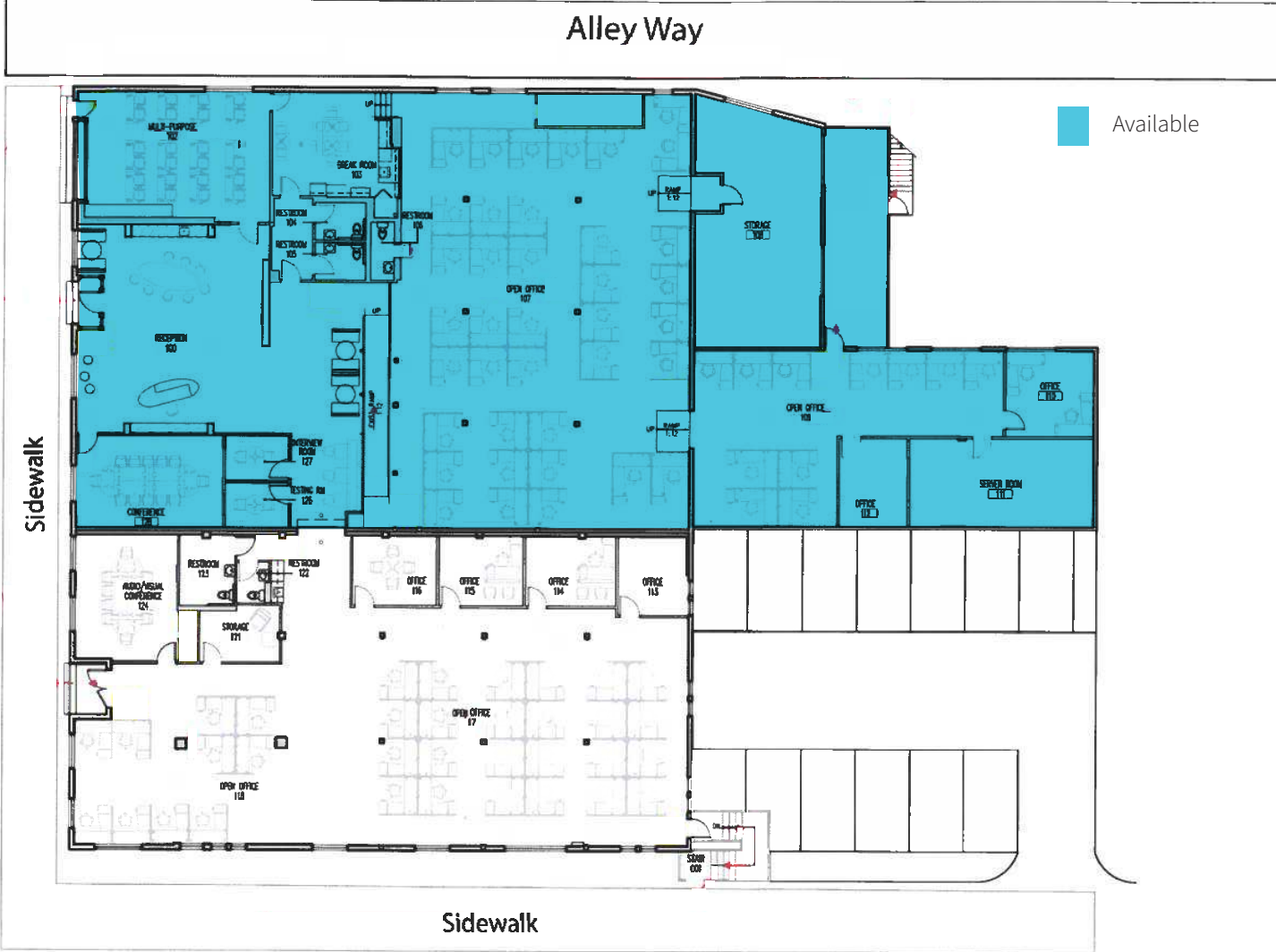
Parking: 20 Secured Stalls at \$85 per Month

9,759 RSF Sublease

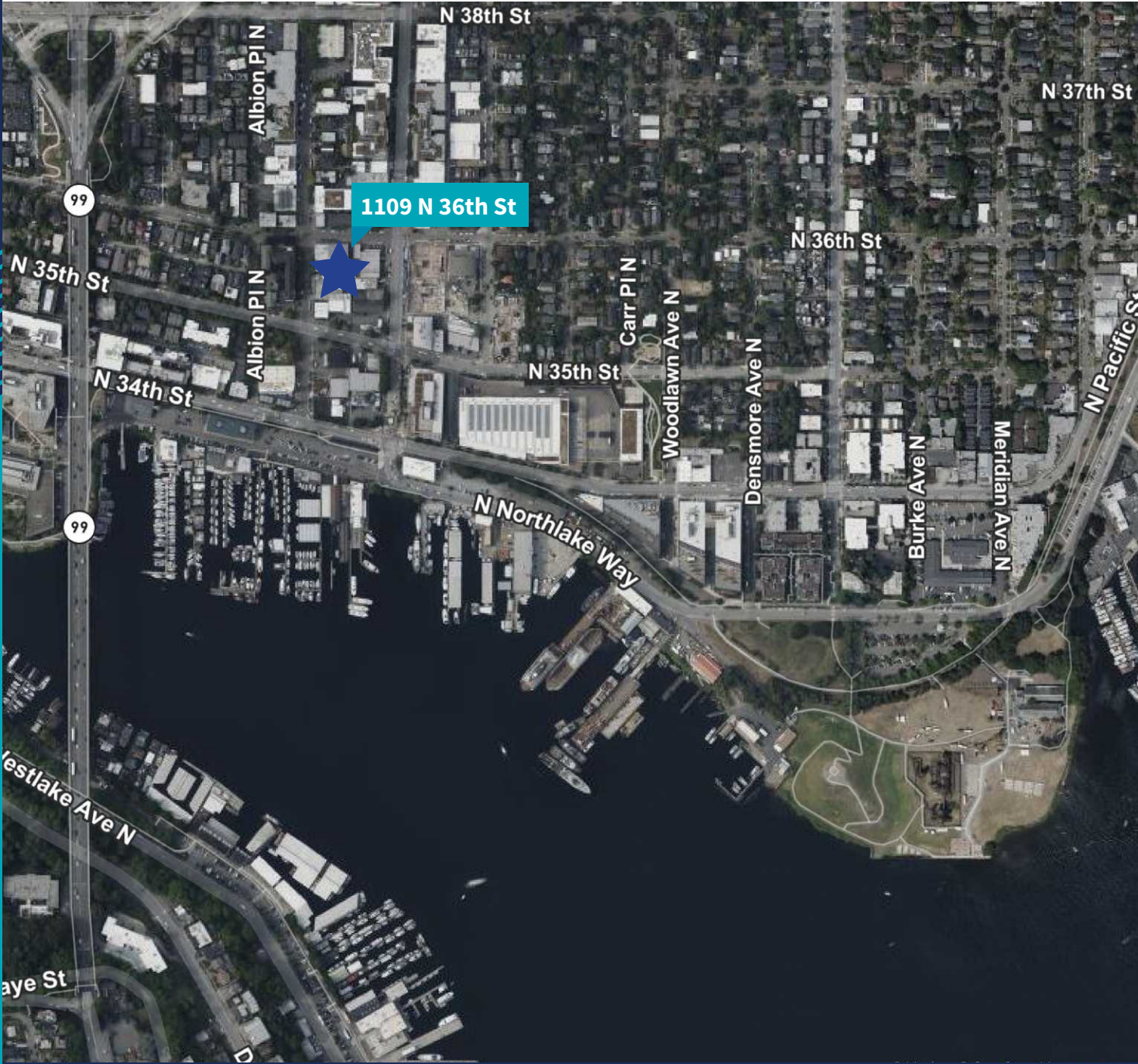
CBRE

Floor 1

+/- 9,759 RSF Available 



Location



1109 North 36th Street

Seattle, WA



Woodland Hills



Contacts

Riley Shephard

First Vice President
+1 206 349 3907
riley.shephard@cbre.com

JJ Shephard

Senior Vice President
+1 206 292 6032
jj.shephard@cbre.com

Paul Carr

Senior Vice President
+1 206 292 6005
paul.carr@cbre.com



© 2023 CBRE, Inc. All rights reserved. This information has been obtained from sources believed reliable but has not been verified for accuracy or completeness. CBRE, Inc. makes no guarantee, representation or warranty and accepts no responsibility or liability as to the accuracy, completeness, or reliability of the information contained herein. You should conduct a careful, independent investigation of the property and verify all information. Any reliance on this information is solely at your own risk. CBRE and the CBRE logo are service marks of CBRE, Inc. All other marks displayed on this document are the property of their respective owners, and the use of such marks does not imply any affiliation with or endorsement of CBRE. Photos herein are the property of their respective owners. Use of these images without the express written consent of the owner is prohibited.