

# Campus Park

1,374 SF - 2,035 SF  
of Warehouse/Office



 THE ANDOVER  
COMPANY, INC.  
CORFAC INTERNATIONAL

*Campus Park is owned and operated by:*

 **Schnitzer**  
PROPERTIES

**ARNE SVENDSEN**  
(206) 947-2885  
[asvendsen@andoverco.com](mailto:asvendsen@andoverco.com)

**SHANE MAHVI**  
(858) 442-0441  
[smahvi@andoverco.com](mailto:smahvi@andoverco.com)





# PROPERTY HIGHLIGHTS



IDEAL FOR LIGHT MANUFACTURING AND DISTRIBUTION WITH SMALL OFFICE.



ALL BAY UNITS HAVE RESTROOMS, SMALL OFFICE, AND RECEPTION AREA.



HIGH-QUALITY SPACE WITH NEW CARPET AND PAINT.



3-PHASE POWER.



GL LOADING DOORS (10' X 10').



14' - 15' CLEARANCE HEIGHT.



EXCELLENT ACCESS AND PROXIMITY TO I-5, SR-18, AND SR-99.



WITHIN MINUTES TO NEARBY BUSINESSES, BANKING, RESTAURANTS, AND RETAIL SERVICES.



# PHOTOS

## BUILDING 1

34310 9th Ave S  
Federal Way, WA

## BUILDING 2

1020 S 344th St  
Federal Way, WA

## BUILDING 3

1112 S 344th St  
Federal Way, WA



# AVAILABLE SPACES

1,374 SF - 2,035 SF

## BUILDING 1

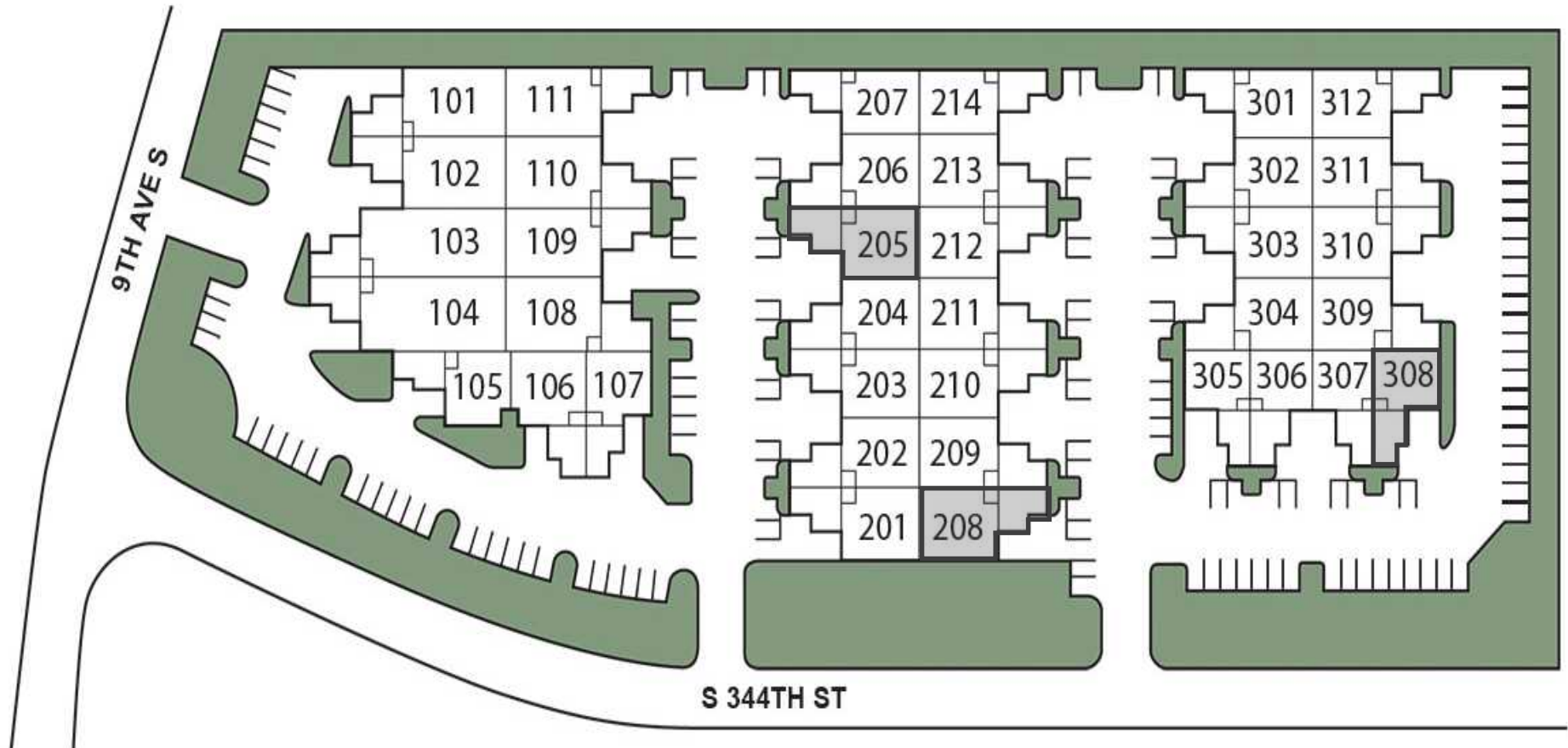
34310 9th Ave S  
Federal Way, WA

## BUILDING 2

1020 S 344th St  
Federal Way, WA

## BUILDING 3

1112 S 344th St  
Federal Way, WA





# AVAILABLE SPACES

1,374 SF - 2,035 SF

BLDG	SUITE	TOTAL SF	OFFICE SF	MONTHLY BASE RENT	EST. NNN'S	AVAILABLE	COMMENTS
2	208	2,035	569	\$2,748	\$819	May 1st, 2024	3 phase power, 1 GL.
2	205	2,004	690	\$2,605	\$806	Available with 30 days notice	3 phase power, 1 GL.
3	308	1,374	620	\$1,786	\$553	June 1st, 2024	3 phase power, 1 GL.

# UNIT 208

1020 S 344th St  
Federal Way, WA

BUILDING: 2

TOTAL SF: 2,035

OFFICE SF: 569

MONTHLY BASE RENT: \$2,748

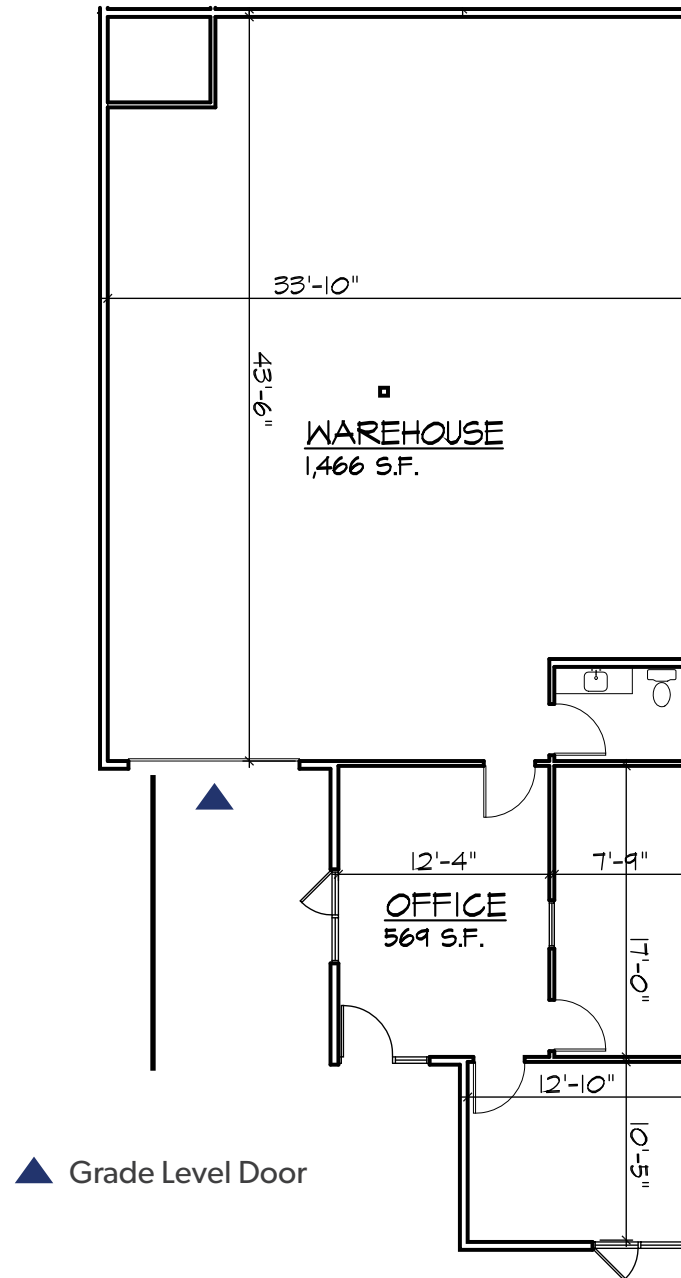
EST. NNN'S: \$819

AVAILABLE: MAY 1ST, 2024

LOADING: 1 GL

**ARNE SVENDSEN**  
(206) 947-2885  
asvensen@andoverco.com

**SHANE MAHVI**  
(858) 442-0441  
smahvi@andoverco.com



# UNIT 205

1020 S 344th St  
Federal Way, WA

BUILDING: 2

TOTAL SF: 2,004

OFFICE SF: 690

MONTHLY BASE RENT: \$2,605

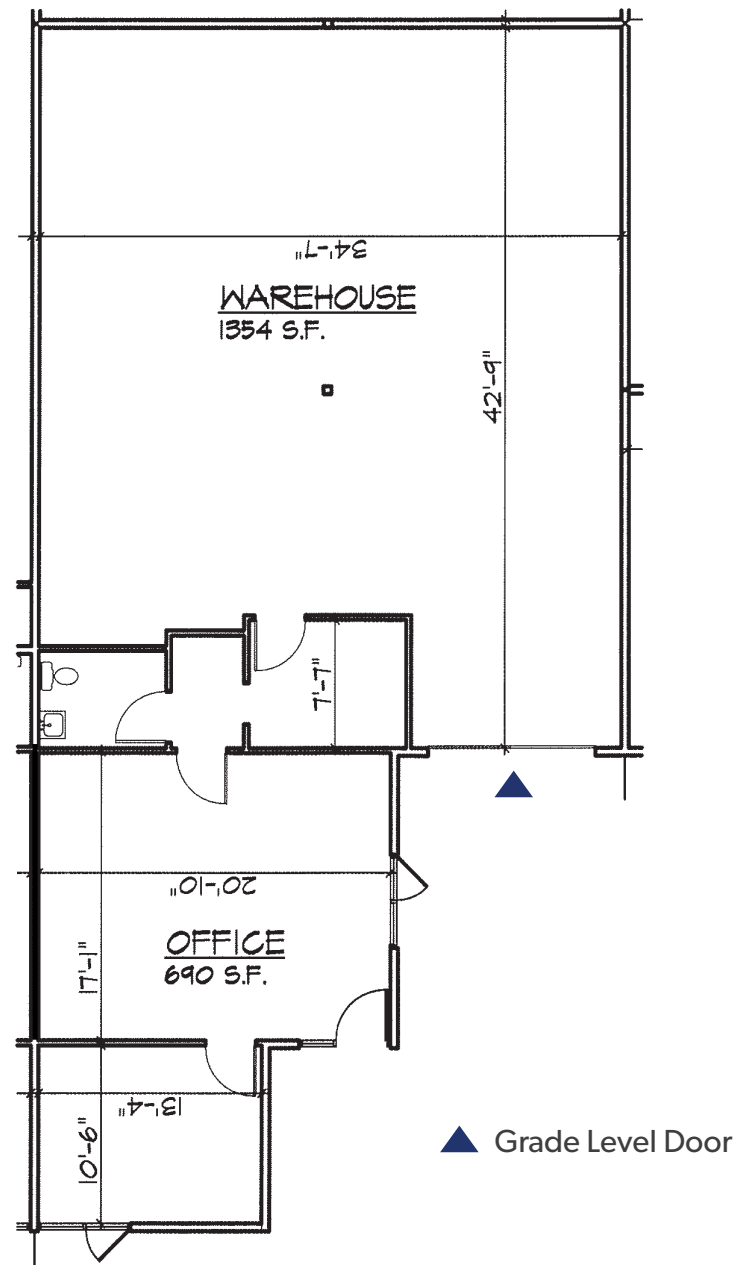
EST. NNN'S: \$806

AVAILABLE: AVAILABLE WITH 30  
DAYS NOTICE

LOADING: 1 GL

**ARNE SVENDSEN**  
(206) 947-2885  
asvensen@andoverco.com

**SHANE MAHVI**  
(858) 442-0441  
smahvi@andoverco.com



# UNIT 308

1112 S 344th St  
Federal Way, WA

BUILDING: 3

TOTAL SF: 1,374

OFFICE SF: 620

MONTHLY BASE RENT: \$1,786

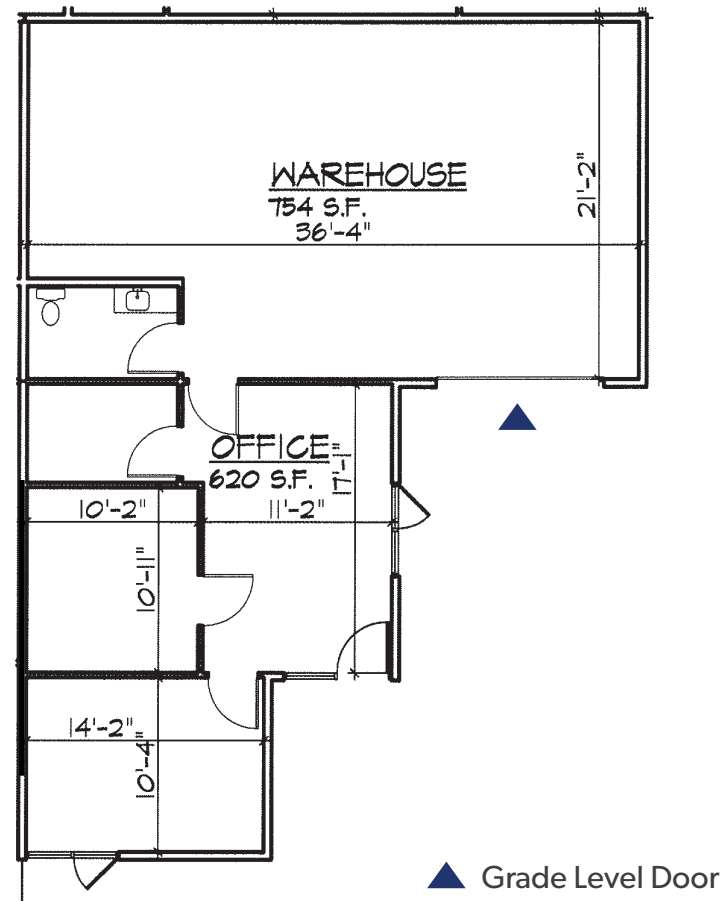
EST. NNN'S: \$553

AVAILABLE: JUNE 1ST, 2024

LOADING: 1 GL

**ARNE SVENDSEN**  
(206) 947-2885  
asvensen@andoverco.com

**SHANE MAHVI**  
(858) 442-0441  
smahvi@andoverco.com







ARNE SVENDSEN  
 (206) 947-2885  
 asvensen@andoverco.com

SHANE MAHVI  
 (858) 442-0441  
 smahvi@andoverco.com

Campus Park | The Andover Company, Inc.

The information contained herein has been obtained from reliable sources, but is not guaranteed. A prospective buyer/tenant should verify each item relating to this property and all information contained herein.