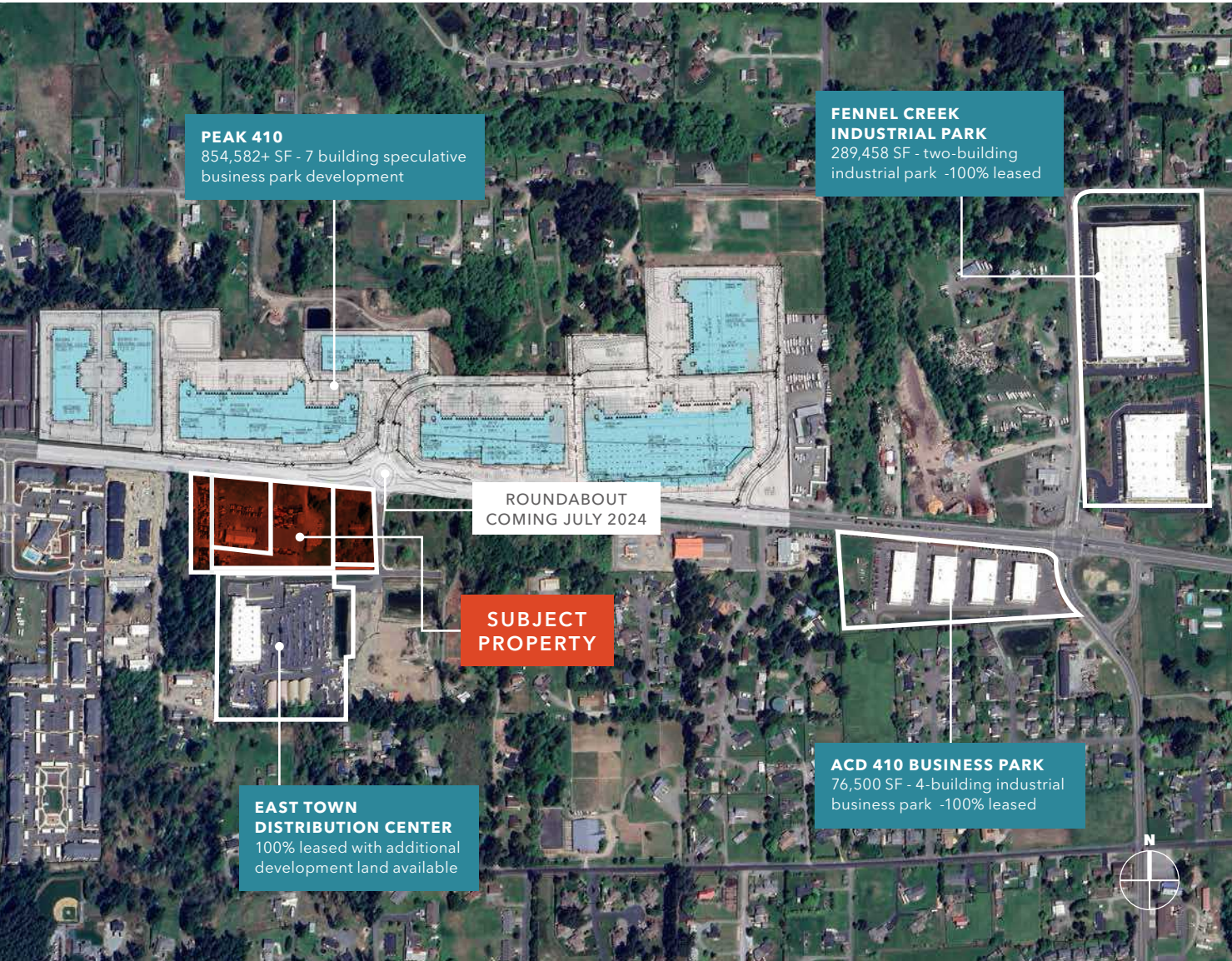


FOR LEASE OR SALE

22212 STATE ROUTE 410

*±6.8 Acres in Bonney Lake - Easttown
Build-To Suit in Fast Growing Market*

22212 STATE ROUTE 410, BONNEY LAKE, WA 98391



PEAK 410
854,582+ SF - 7 building speculative business park development

FENNEL CREEK INDUSTRIAL PARK
289,458 SF - two-building industrial park -100% leased

ROUNDBOUT
COMING JULY 2024

**SUBJECT
PROPERTY**

**EAST TOWN
DISTRIBUTION CENTER**
100% leased with additional development land available

ACD 410 BUSINESS PARK
76,500 SF - 4-building industrial business park -100% leased

PROPERTY HIGHLIGHTS

+6.8
LAND ACRES

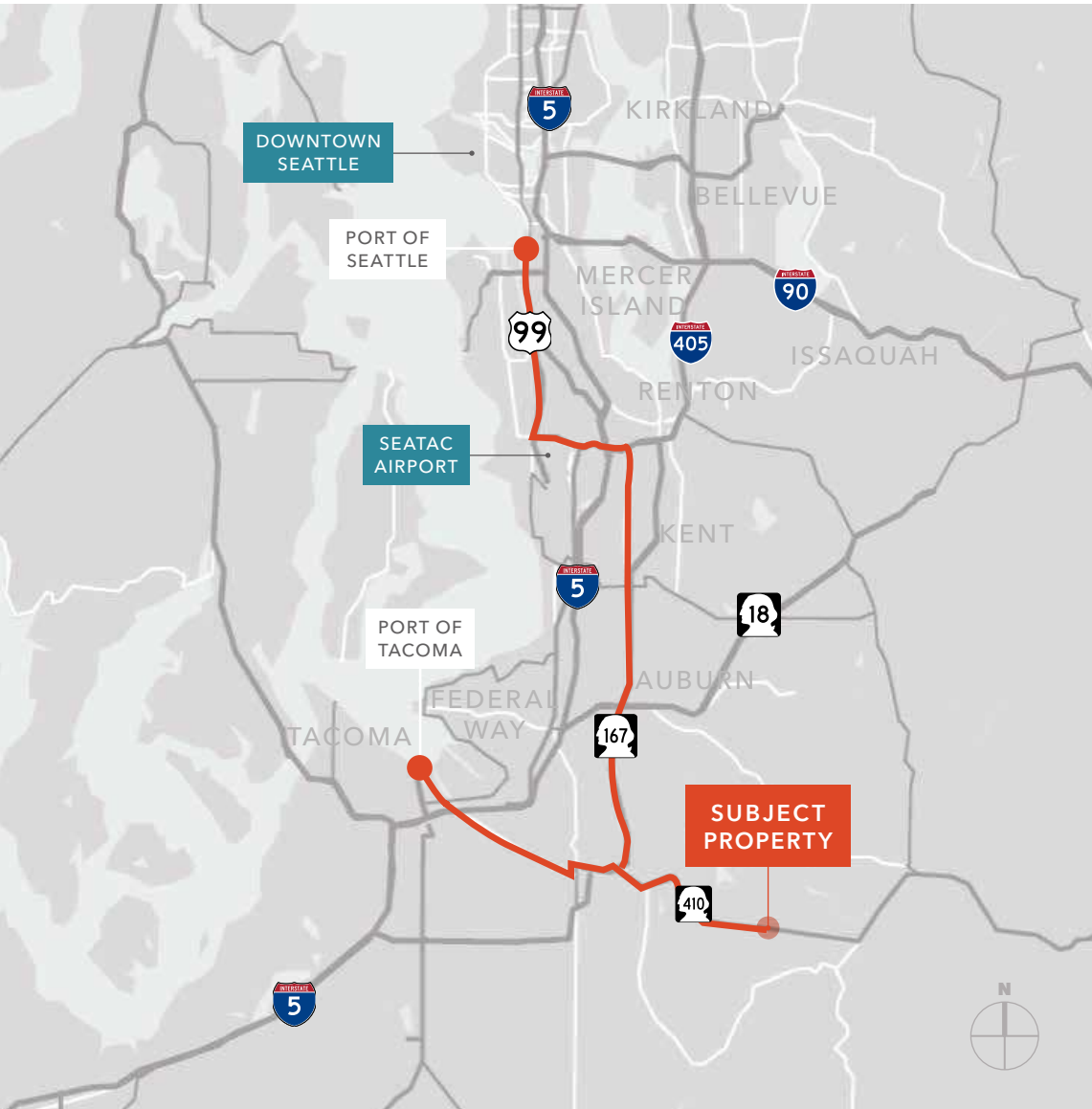
296,615
LAND SQUARE FEET

→ ZONING MAP

→ ZONING USE

MATT MCLENNAN, SIOR, CCIM
253.722.1458
matt.mclennan@kidder.com

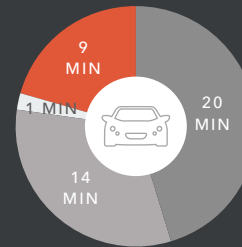
KRAIG HEETER, SIOR
206.248.7313
kraig.heeter@kidder.com



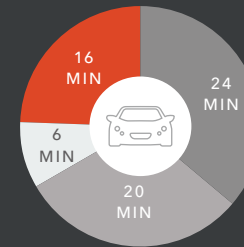
PERFECTLY CONNECTED

PEAK 410 EASILY ACCESSES MAJOR FREEWAYS AND INTERSTATE HIGHWAYS.

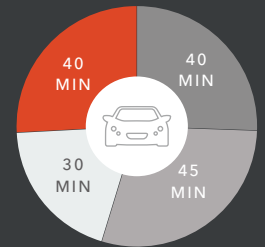
SR-167



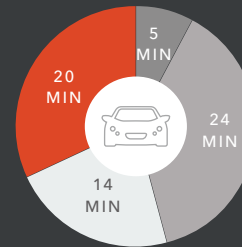
Highway 18



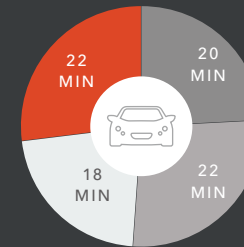
Port of Tacoma



I-5 Entrance



Port of Seattle



Seatac Airport

