



# FOR LEASE

*Warehouse/Office with immediate access and visibility to SR-520. Minutes to downtown Bellevue, Redmond and Kirkland.*

12880 NE 21ST PLACE | BELLEVUE, WA

*18,100 SF*

TOTAL BUILDING AREA

*3,200 SF*

OFFICE

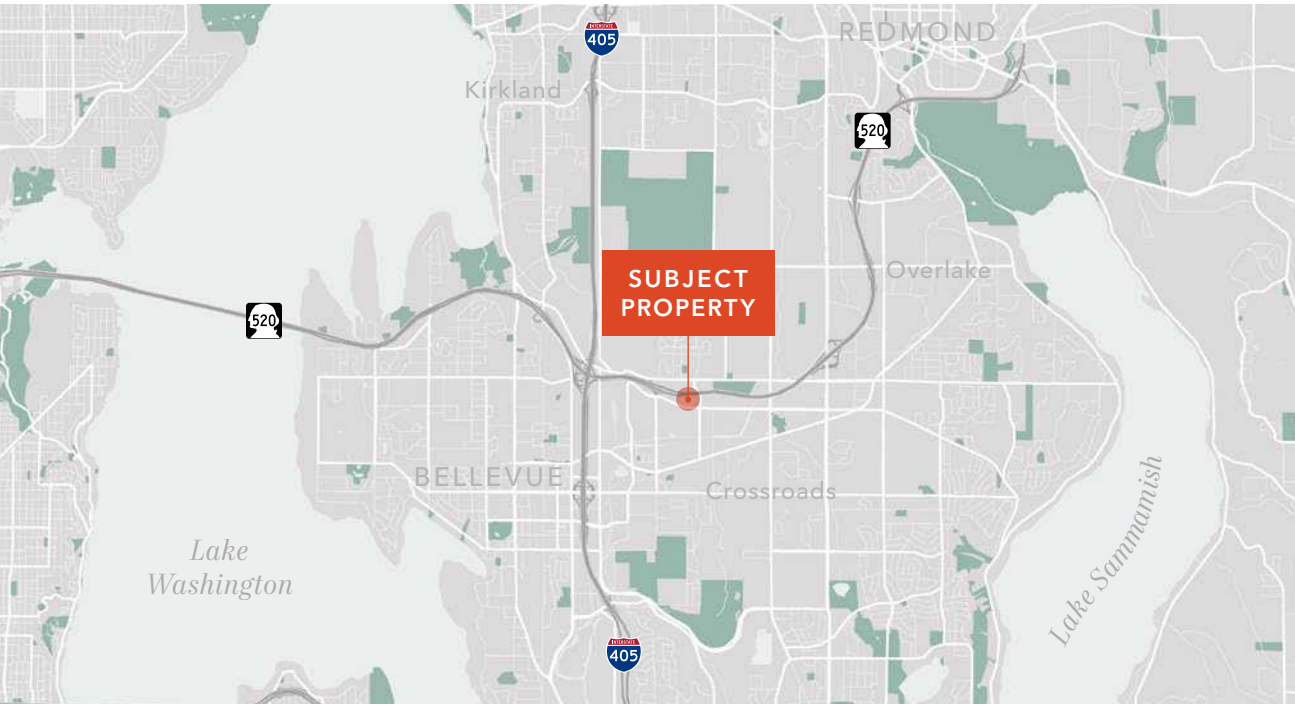
*12,400 SF*

WAREHOUSE

*2,500 SF*

MEZZANINE





## PROPERTY OVERVIEW

ADDRESS	12880 NE 21st Place, Bellevue, WA
BUILDING AREA	18,100 SF
	• Warehouse 12,400 SF
	• Office 3,200 SF
	• Mezzanine 2,500 SF
ZONING	BR-GC
POWER & LIGHTING	3-phase ,800 amps, 120/208v. Skylights and power drops throughout the warehouse.
CLEAR HEIGHT	20'
ROOF	New 2022
LOADING	2 grade-level doors 14'x16'w & 10'x8'w
AVAILABLE	June 2024



**\$1.86/SF**

BLENDDED RENTS + NNN

**\$0.35/SF**

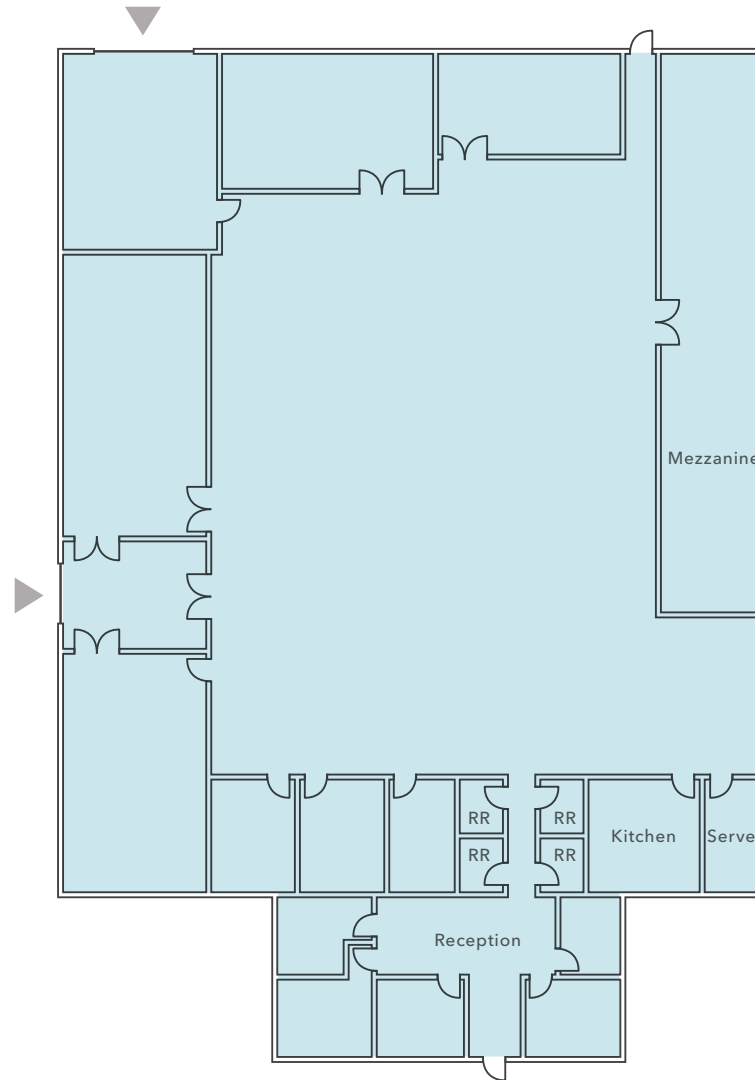
EST. NNN

[KIDDER.COM](https://www.kidder.com)

This information supplied herein is from sources we deem reliable. It is provided without any representation, warranty, or guarantee, expressed or implied as to its accuracy. Prospective Buyer or Tenant should conduct an independent investigation and verification of all matters deemed to be material, including, but not limited to, statements of income and expenses. Consult your attorney, accountant, or other professional advisor.



# FLOOR PLAN



**18,100 SF**

BUILDING AREA

**06/2024**

AVAILABLE

*For leasing information,  
please contact:*

**TODD GAUTHIER**  
Executive Vice President  
425.450.1118  
todd.gauthier@kidder.com

**JASON BLOOM**  
Executive Vice President  
425.450.1102  
jason.bloom@kidder.com



▲ Grade-level loading

**KIDDER.COM**

This information supplied herein is from sources we deem reliable. It is provided without any representation, warranty, or guarantee, expressed or implied as to its accuracy. Prospective Buyer or Tenant should conduct an independent investigation and verification of all matters deemed to be material, including, but not limited to, statements of income and expenses. Consult your attorney, accountant, or other professional advisor.

