



# FOR LEASE

## OFFICE SPACE AVAILABLE

### SUITE 200

Lease Rate: \$24.00 PSF, Gross Lease  
*Gross Lease: Tenant shall pay interior janitorial (including east & west stairwells), internet/data/cable, & security services*

Suite Size: ±2,840 RSF  
**AVAILABLE AUGUST 1ST, 2024 OR SOONER!**

Building Size: ±6,666 SF  
 Total Lot Size: ±0.4678 Acres  
 Year Built: 2012  
 Parcel Number: P8325003007A  
 Zoning: CCS



KIEMLEHAGOOD.COM

## OFFICE SPACE FOR LEASE

3760 E Seltice Way  
 Post Falls, ID 83854

**View  
Location**



**PAT EBERLIN**

208.215.1375

pat.eberlin@kiemlehagood.com

**MARY KIENBAUM**

208.770.2589

mary.kienbaum@kiemlehagood.com

**KIEMLE  
HAGOOD**



# OFFICE SPACE FOR LEASE

3760 E Seltice Way | Post Falls, ID

## SUITE 200 | 2ND FLOOR OFFICE SPACE

7 Private Offices

3 Open Office Cubicles

Conference Room

Reception

Restrooms

Break area



# FLOOR PLAN

3760 E Seltice Way | Post Falls, ID

## SUITE 200 |

±2,840 RSF

7 Private Offices

3 Open Office Cubicles

Conference Room

Reception

Restrooms



## UPPER LEVEL

±3,256 SF





# OFFICE SPACE FOR LEASE

3760 E Seltice Way | Post Falls, ID

## Location Highlights

Excellent visibility

Situated on a signalized intersection

Easy access to I-90 and Highway 41

High traffic Counts

*Seltice Way @ Herborn Pl: ±18,641*

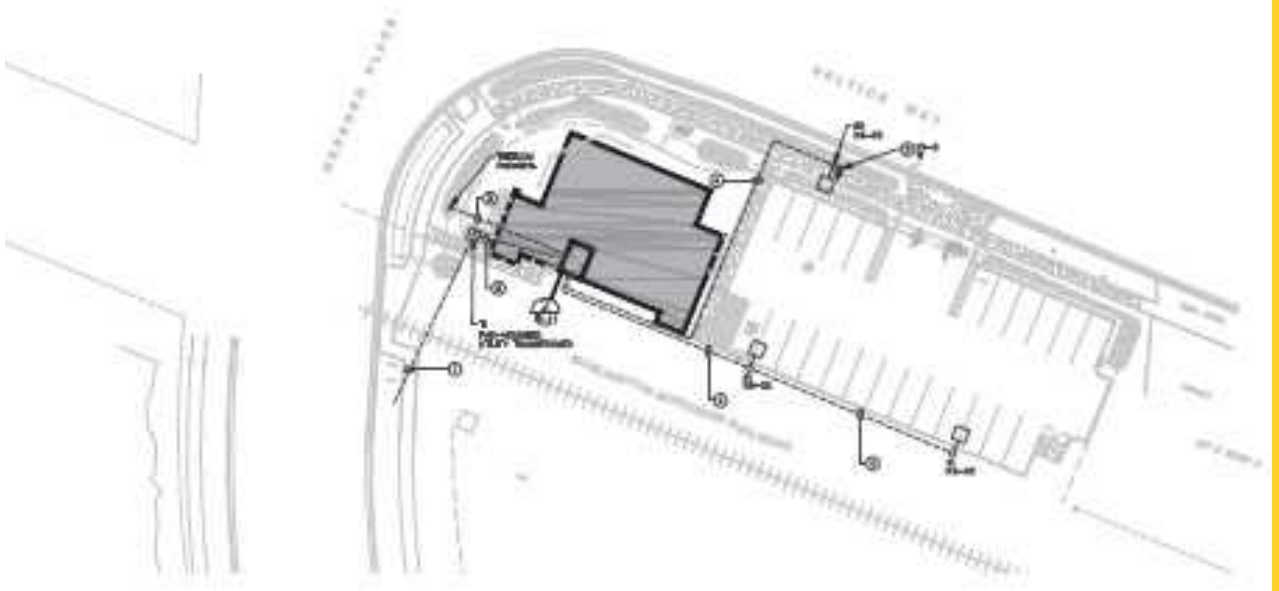
*I-90 @ Highway 41: ±56,868*

## Building Highlights

Built in 2012

Elevator/lift serviced

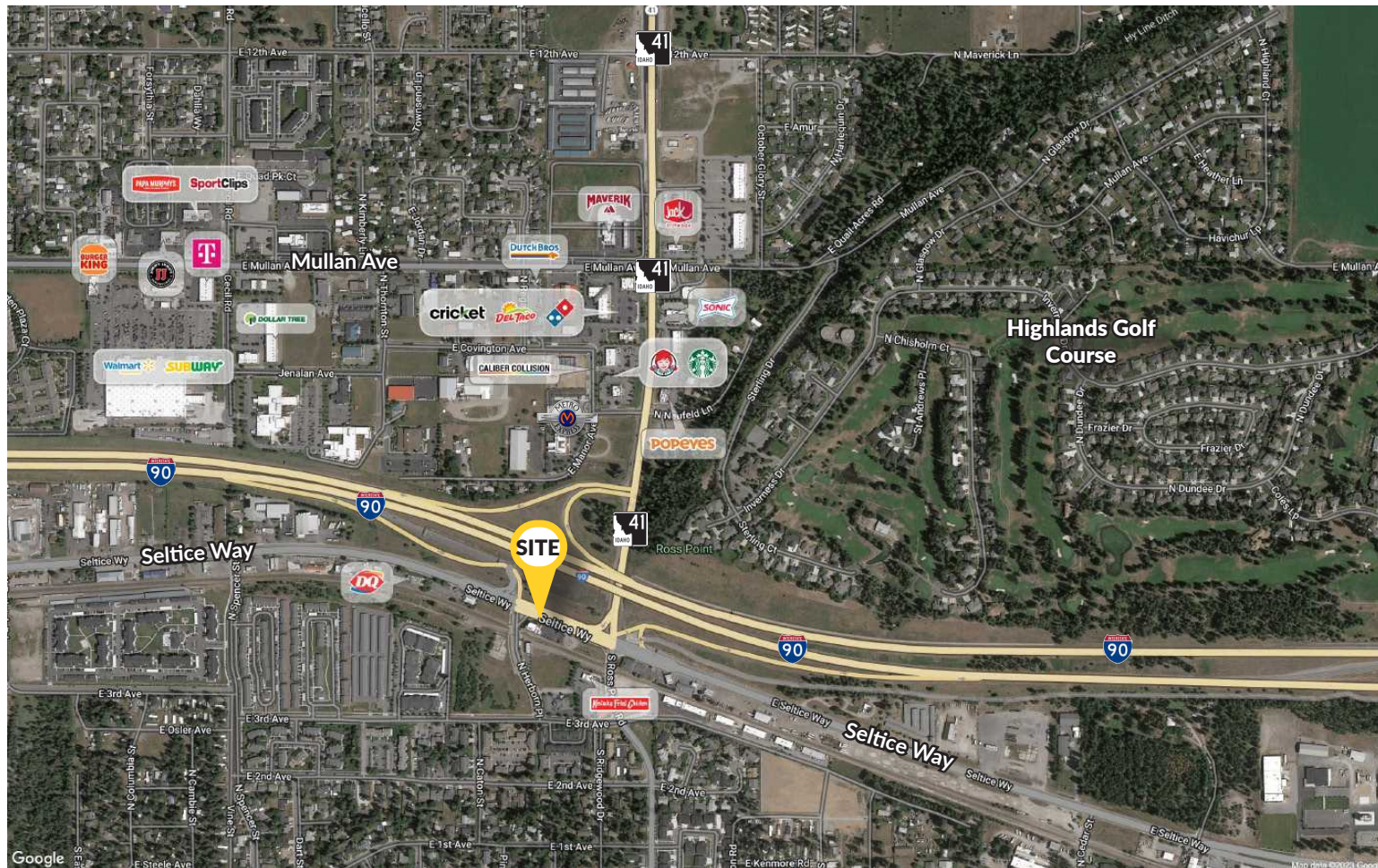
Contemporary styling



Visit [itdprojects.org](http://itdprojects.org)  
to learn more about  
the I-90/SH-41  
Interchange Project







# OFFICE SPACE FOR LEASE

3760 E Seltice Way  
Post Falls, ID 83854

## PAT EBERLIN

208.215.1375

pat.eberlin@kiemlehagood.com

## MARY KIENBAUM

208.770.2589

mary.kienbaum@kiemlehagood.com

1579 W RIVERSTONE DRIVE, SUITE 102  
COEUR D'ALENE, ID 83814

**KIEMLE  
HAGOOD**

**OFFICE LOCATIONS**

SPOKANE | COEUR D'ALENE | TRI-CITIES | PALOUSE | MISSOULA

No warranty or representation, expressed or implied, is made by Kiemle Hagood, its agents or its employees as to the accuracy of the information contained herein. All information furnished is from sources deemed reliable and submitted subject to errors, omissions, change of terms and conditions, prior sale, lease or financing, or withdrawal without notice. No one should rely solely on the above information, but instead should conduct their own investigation to independently satisfy themselves.

Kiemle Hagood respects the intellectual property of others:

If you believe the copyright in your work has been violated through this Website, please contact our office for notice of claims of copyright infringement. For your complaint to be valid under the Digital Millennium Copyright Act of 1998 (DMCA), you must provide the following information when providing notice of the claimed copyright infringement: Identify the material on the Website that you believe infringes your work, with enough detail so that we may locate it on the Website; provide your address, telephone number and email address; provide a statement that you have a good faith belief that the disputed use is not authorized by the copyright owner, its agent, or the law; provide a statement that the information in the notification is accurate, and under penalty of perjury, that the complaining party is authorized to act on behalf of the owner of an exclusive right that is allegedly infringed; and provide your physical or electronic signature. Upon receiving your complaint, Kiemle Hagood will, upon review, remove content that you believe infringes your copyright if the complaint is found to be valid.

