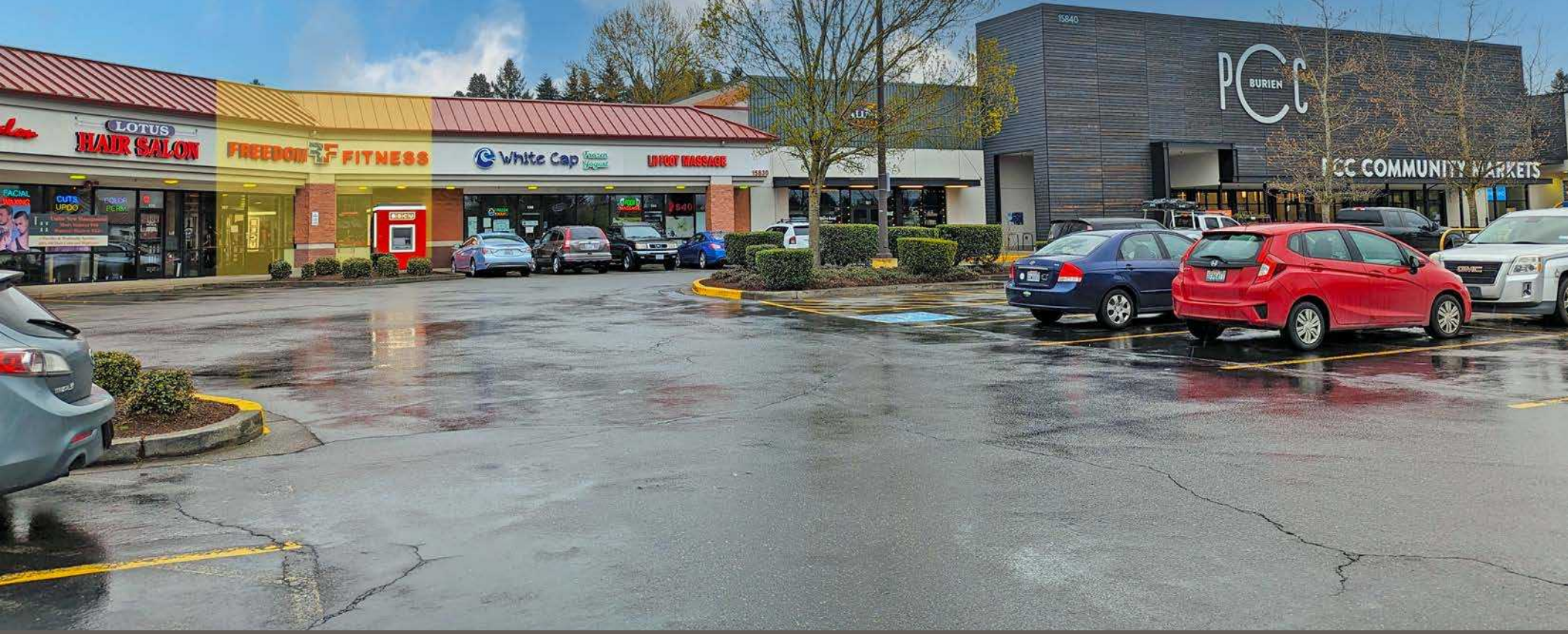


FOR LEASE

1st Avenue S & SW 160th Street
Burien, WA 98148



FIVE CORNERS SHOPPING CENTER

First Western Properties—Tacoma Inc. | 253.472.0404
6402 Tacoma Mall Blvd, Tacoma, WA 98409 | fwp-inc.com

FIVE CORNERS SHOPPING CENTER is anchored by PCC Community Markets and Trader Joe's across from CVS and Highline Medical Center. The location provides excellent visibility and access to Highway 509. Take advantage of the opportunity to join great line-up of national retailers in a dynamic shopping center.

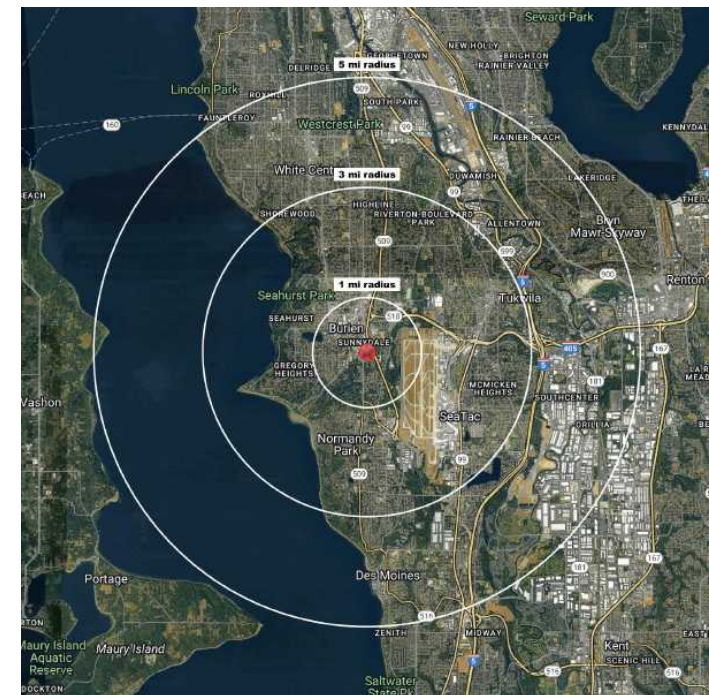
1ST AVENUE S & SW 160TH STREET:




APPROX. 4,311 SF

CALL FOR DETAILS

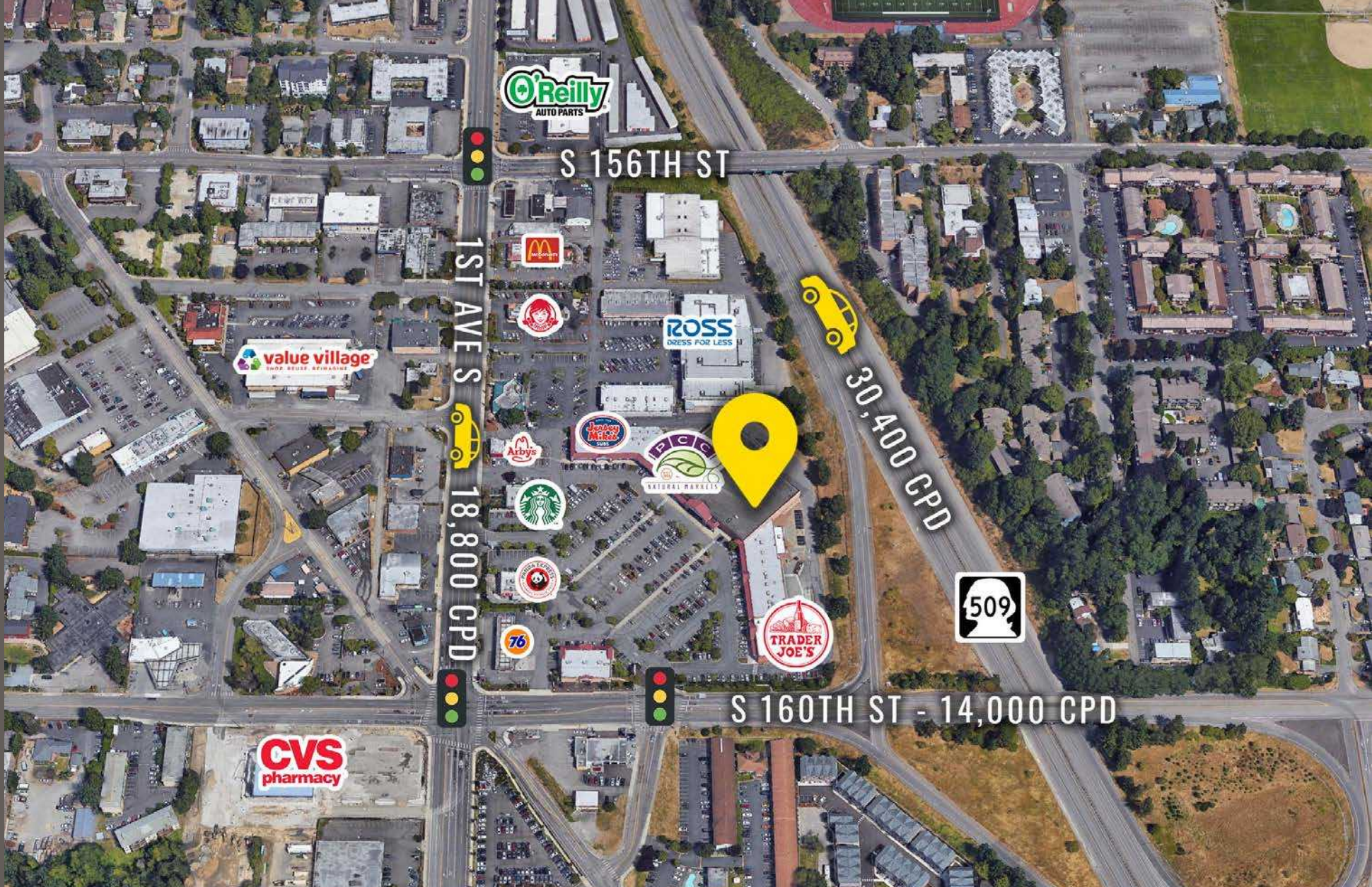


TENANTS



	 Population	 Average HH Income	 Daytime Population
Regis - 2024			
Mile 1	12,575	\$146,834	9,793
Mile 3	93,431	\$136,925	56,529
Mile 5	200,071	\$136,236	163,268

LOCATION DETAILS



Access to and from SR 509

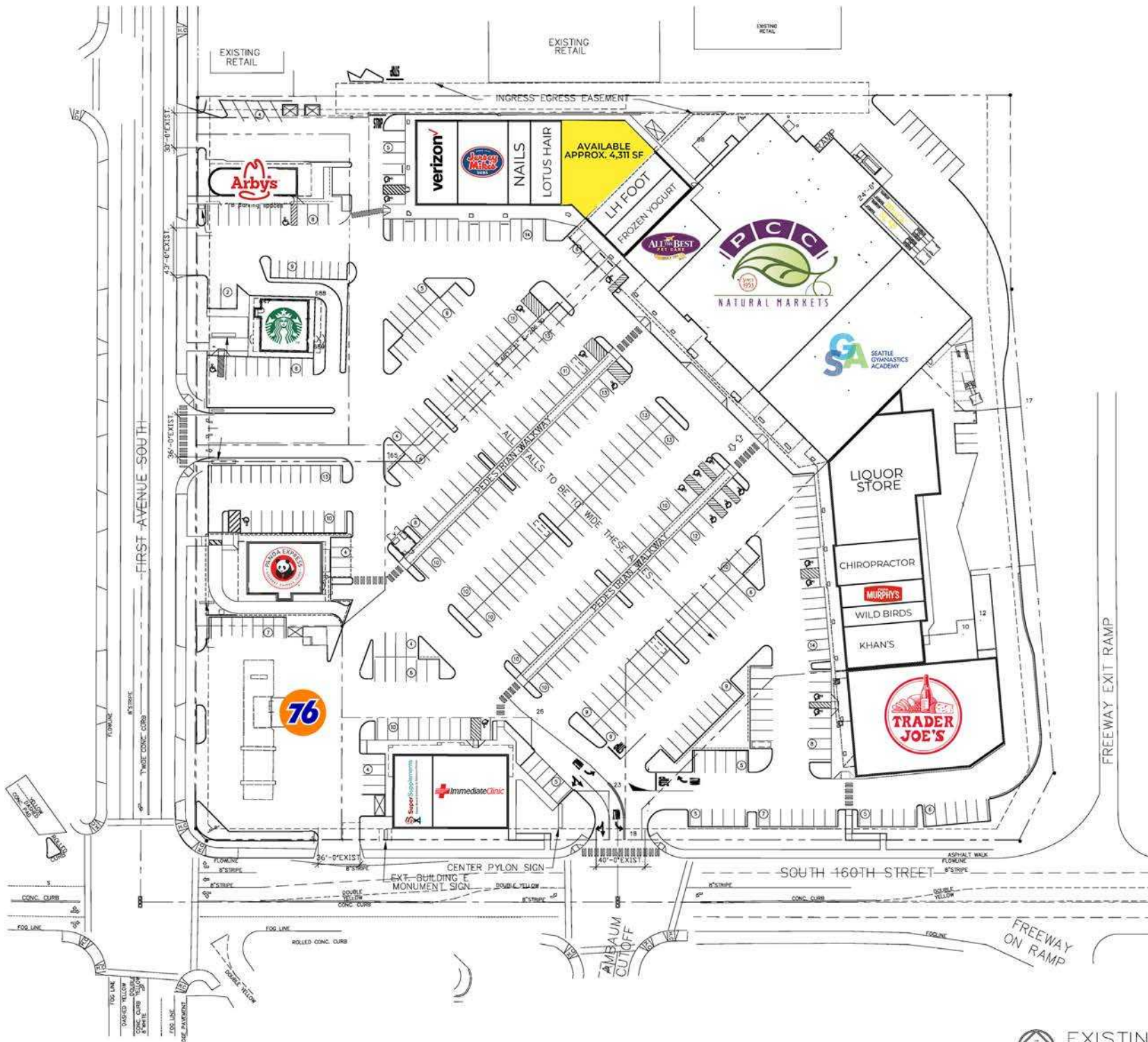


14,000 CPD
S 160th Street



18,800 CPD
1st Ave S

SITE PLAN






TACOMA | KIRKLAND | PORTLAND | SEATTLE

RELATIONSHIP FOCUSED.
RESULTS DRIVEN.




JOSH PARNELL

 253.284.3630

 josh@firstwesternproperties.com

JUSTIN HOLMES

 253.447.2282

 justin@firstwesternproperties.com

First Western Properties—Tacoma Inc. | 253.472.0404
6402 Tacoma Mall Blvd, Tacoma, WA 98409 | fwp-inc.com

© First Western Properties, Inc. DISCLAIMER: The above information has been secured from sources believed to be reliable, however, no representations are made to its accuracy. Prospective tenants or buyers should consult their professional advisors and conduct their own independent investigation. Properties are subject to change in price and/or availability without notice.