

# ROCK POINTE WEST



ROCK POINTE



Rock Pointe I

## OFFICE SPACE FOR LEASE

BUILDING	LEASE RATE	SPACE AVAILABLE
Rock Pointe I	\$22.00 - \$22.00 / RSF	2,481 - 3,779 SF
Rock Pointe Tower	\$15.50 - \$23.00 / RSF	959 - 3,777 SF
Rock Pointe III	\$21.00 - \$23.00 / RSF	1,483 - 10,040 SF

### AMENITIES

- Wide variety of space sizes and build-out options
- Ample free parking: 4/1,000, some covered
- Free use of building conference rooms
- Convenient on-site exercise facilities
- Convenient location close to Spokane's Downtown Central Business District

### CONTACTS


Craig Soehren  
Broker  
509.755.7548

[craigs@kiemleagood.com](mailto:craigs@kiemleagood.com)

Erik Nelson, SIOR  
Managing Broker  
509.755.7514

[erik.nelson@kiemleagood.com](mailto:erik.nelson@kiemleagood.com)

**KIEMLE  
HAGOOD**

Kiemle Hagood  
601 W. Main Avenue, Suite 400  
Spokane, WA 99201  
509.838.6541 

Kiemle Hagood respects the intellectual property of others. If you believe the copyright in your work has been violated through this Website, please contact our office for notice of claims of copyright infringement. For your complaint to be valid under the Digital Millennium Copyright Act of 1998 (DMCA), you must provide the following information when providing notice of the claimed copyright infringement: identify the material on the Website that you believe infringes your work, with enough detail so that we may locate it on the Website; provide your address, telephone number and email address; provide a statement that you have a good faith belief that the disputed use is not authorized by the copyright owner, its agent, or the law; provide a statement that the information in the notification is accurate, and under penalty of perjury, that the complaining party is authorized to act on behalf of owner of an exclusive right that is allegedly infringed; provide your physical or electronic signature. Upon receiving your complaint, Kiemle Hagood will, upon review, remove content that you believe infringes your copyright if the complaint is found valid.



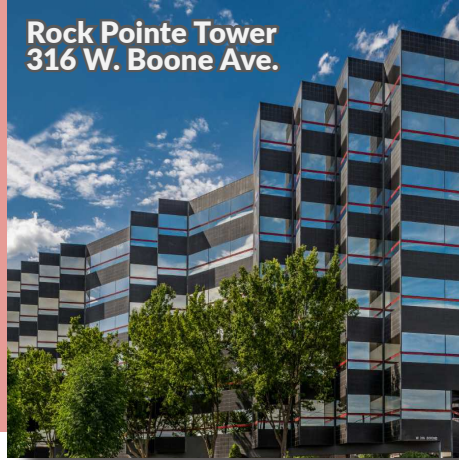
ROCK POINTE

# ROCK POINTE WEST

**Rock Pointe I**  
12-12 N. Washington St.



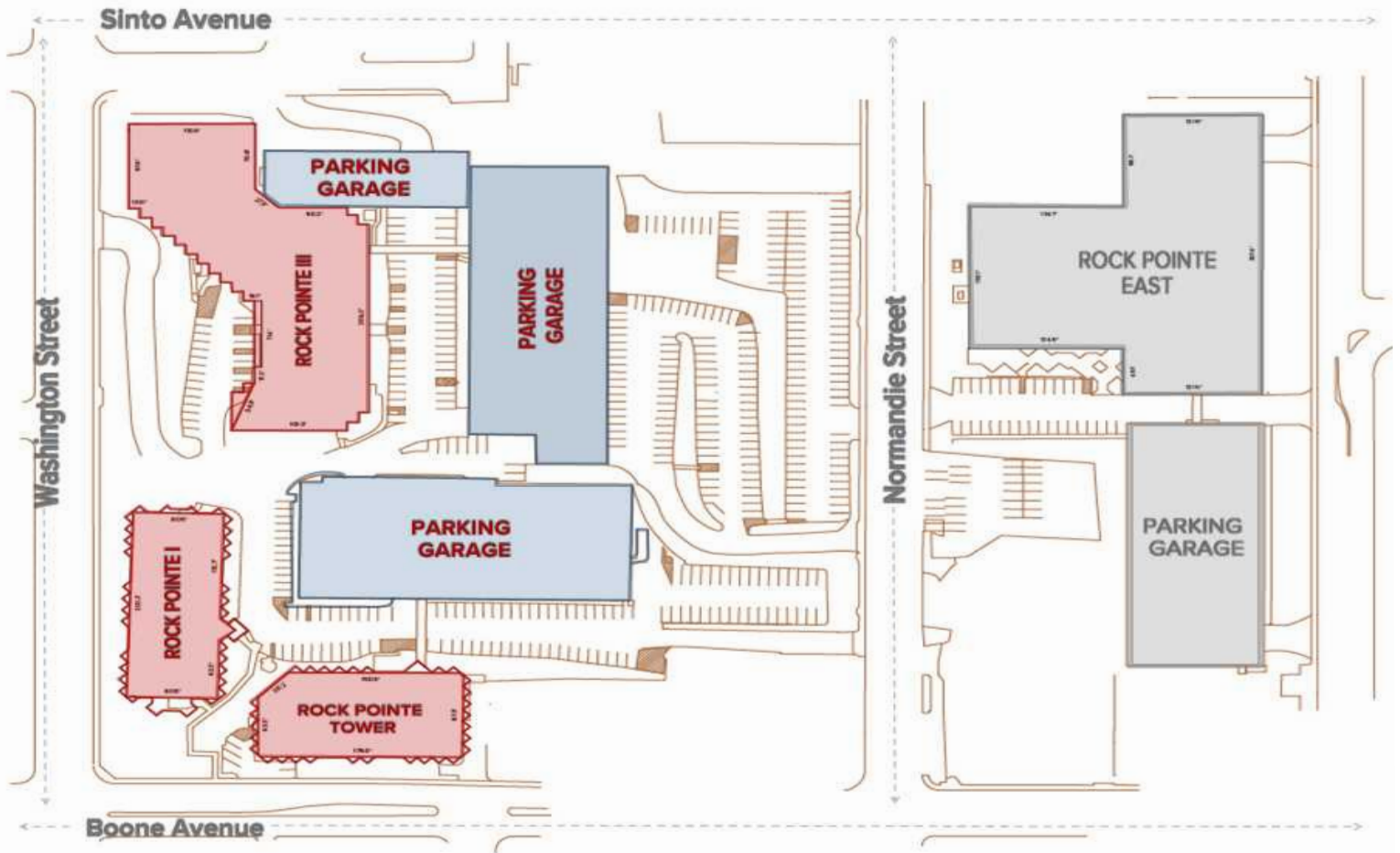
**Rock Pointe Tower**  
316 W. Boone Ave.



**Rock Pointe III**  
1330 N. Washington St.



## SITE PLAN



ROCK POINTE

**Craig Soehren**

Broker

509.755.7548

[craigs@kiemlehagood.com](mailto:craigs@kiemlehagood.com)

**Erik Nelson, SIOR**

Managing Broker

509.755.7514

[erik.nelson@kiemlehagood.com](mailto:erik.nelson@kiemlehagood.com)

**KIEMLE  
HAGOOD**

Kiemle Hagood respects the intellectual property of others:

If you believe the copyright in your work has been violated through this Website, please contact our office for notice of claims of copyright infringement. For your complaint to be valid under the Digital Millennium Copyright Act of 1998 (DMCA), you must provide the following information when providing notice of the claimed copyright infringement: Identify the material on the Website that you believe infringes your work, with enough detail so that we may locate it on the Website; provide your address, telephone number and email address; provide a statement that you have a good faith belief that the disputed use is not authorized by the copyright owner, its agent, or the law; provide a statement that the information in the notification is accurate, and under penalty of perjury, that the complaining party is authorized to act on behalf of owner of an exclusive right that is allegedly infringed; provide your physical or electronic signature. Upon receiving your complaint, Kiemle Hagood will, upon review, remove content that you believe infringes your copyright if the complaint is found valid.

# ROCK POINTE WEST

Rock Pointe I  
1212 N. Washington Street



ROCK POINTE

## AVAILABLE SPACE

## 2ND FLOOR

SUITE	LEASE RATE	RSF	DESCRIPTION
#220	\$22.00 / SF	3,779	8 private offices Reception Conference room AVAILABLE 10.1.24



Craig Soehren  
Broker  
509.755.7548  
craigs@kiemlehagood.com

Erik Nelson, SIOR  
Managing Broker  
509.755.7514  
erik.nelson@kiemlehagood.com



# ROCK POINTE WEST

Rock Pointe I  
1212 N. Washington Street



ROCK POINTE

## AVAILABLE SPACE

## 3RD FLOOR

SUITE	LEASE RATE	RSF	DESCRIPTION
#302	\$22.00 / SF	2,481	2 private offices AVAILABLE 7.1.2024



ROCK POINTE

Craig Soehren

Broker

509.755.7548

craigs@kiemlehagood.com

Erik Nelson, SIOR

Managing Broker

509.755.7514

erik.nelson@kiemlehagood.com

**KIEMLE  
HAGOOD**

# ROCK POINTE WEST

Rock Pointe Tower  
316 W. Boone Avenue



ROCK POINTE

## AVAILABLE SPACE

## 1ST FLOOR

SUITE	LEASE RATE	RSF	DESCRIPTION
#150	\$15.50 / SF	959	Open office layout



Craig Soehren  
Broker  
509.755.7548  
craigs@kiemlehagood.com

Erik Nelson, SIOR  
Managing Broker  
509.755.7514  
erik.nelson@kiemlehagood.com



# ROCK POINTE WEST

Rock Pointe Tower  
316 W. Boone Avenue



ROCK POINTE

## AVAILABLE SPACE

## 3RD FLOOR

SUITE	LEASE RATE	RSF	DESCRIPTION
#354	\$21.50 / SF	1,216	Reception Open area 3 private offices
#373	\$21.50 / SF	1,792	Open area 1 private office

SUITE	LEASE RATE	RSF	DESCRIPTION
#380	\$21.50 / SF	2,532	Reception Break room Conference room 6 private offices



# ROCK POINTE WEST

Rock Pointe Tower  
316 W. Boone Avenue

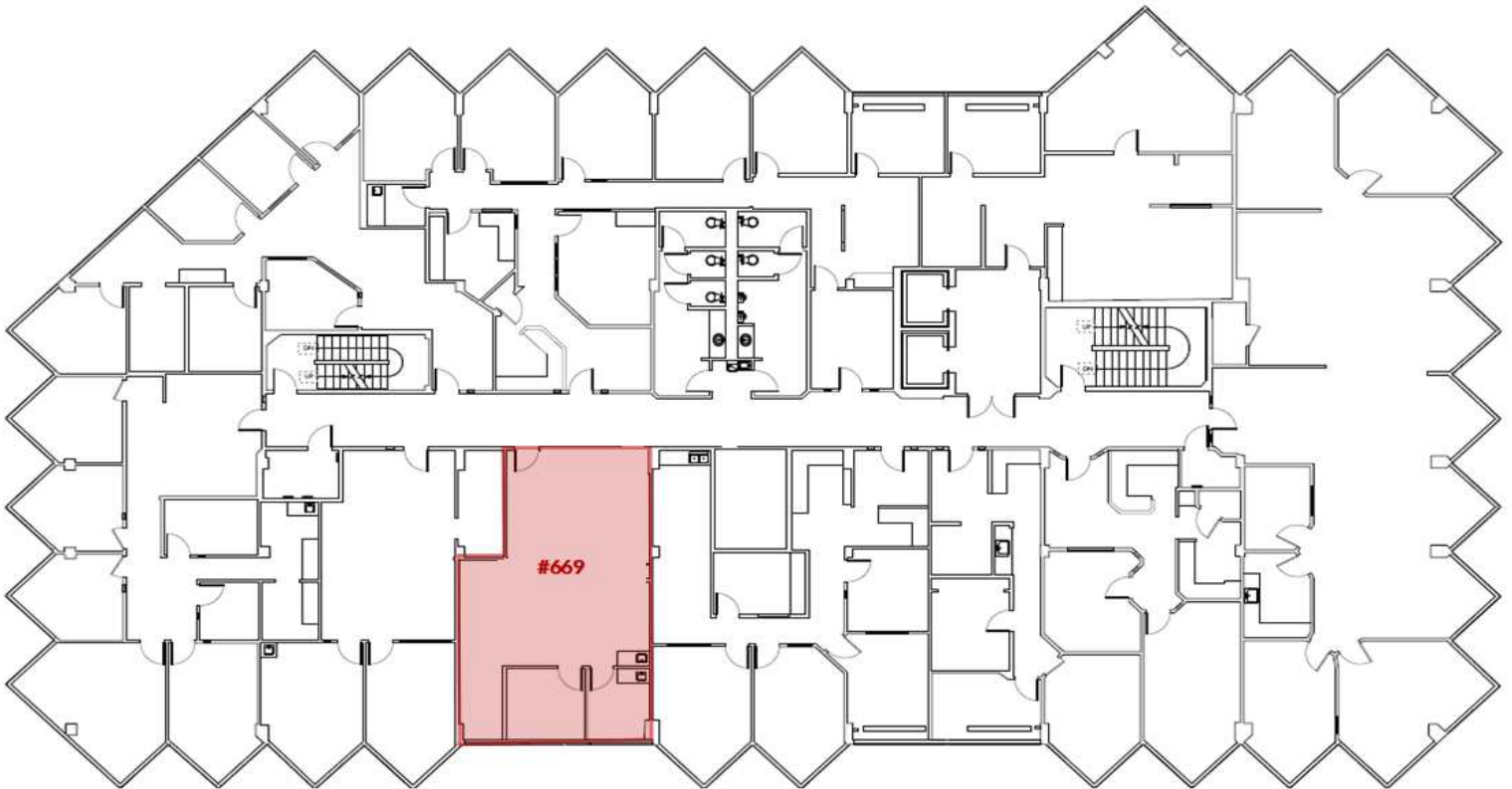


ROCK POINTE

## AVAILABLE SPACE

## 6TH FLOOR

SUITE	LEASE RATE	RSF	DESCRIPTION
#669	\$21.50 / SF	1,112	Open space 2 private offices



ROCK POINTE

Craig Soehren

Broker

509.755.7548

craigs@kiemlehagood.com

Erik Nelson, SIOR

Managing Broker

509.755.7514

erik.nelson@kiemlehagood.com

**KIEMLE  
HAGOOD**

# ROCK POINTE WEST

Rock Pointe Tower  
316 W. Boone Avenue



ROCK POINTE

## AVAILABLE SPACE

## 7TH FLOOR

SUITE	LEASE RATE	RSF	DESCRIPTION
#755	\$21.50 / SF	3,777	Open space 3 private offices



ROCK POINTE

Craig Soehren

Broker

509.755.7548

craigs@kiemlehgood.com

Erik Nelson, SIOR

Managing Broker

509.755.7514

erik.nelson@kiemlehgood.com





# ROCK POINTE WEST

Rock Pointe III  
1330 N. Washington St

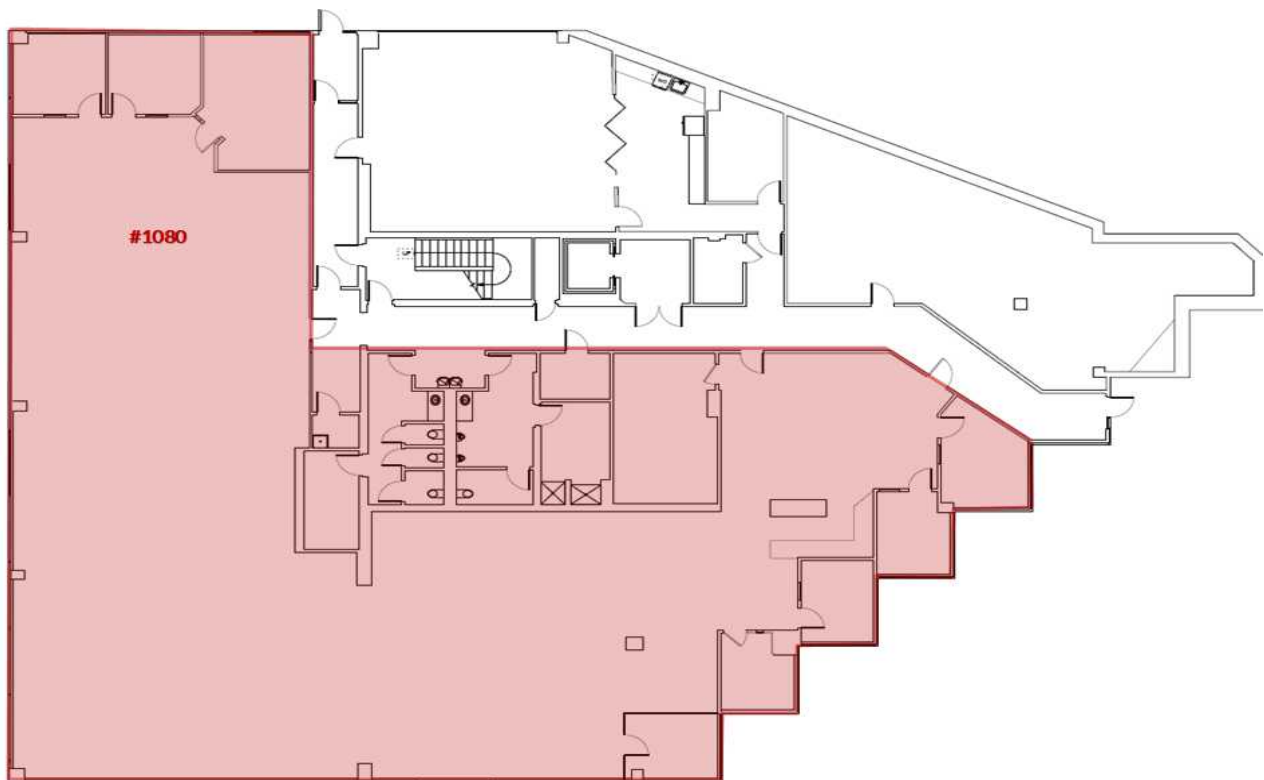


ROCK POINTE

## AVAILABLE SPACE

## 1ST FLOOR

SUITE	LEASE RATE	RSF	DESCRIPTION
#1080	\$22.00 / SF	10,040	Open office



ROCK POINTE

**Craig Soehren**

Broker

509.755.7548

[craigs@kiemlehagood.com](mailto:craigs@kiemlehagood.com)

**Erik Nelson, SIOR**

Managing Broker

509.755.7514

[erik.nelson@kiemlehagood.com](mailto:erik.nelson@kiemlehagood.com)

**KIEMLE  
HAGOOD**

# ROCK POINTE WEST

Rock Pointe III  
1330 N. Washington St

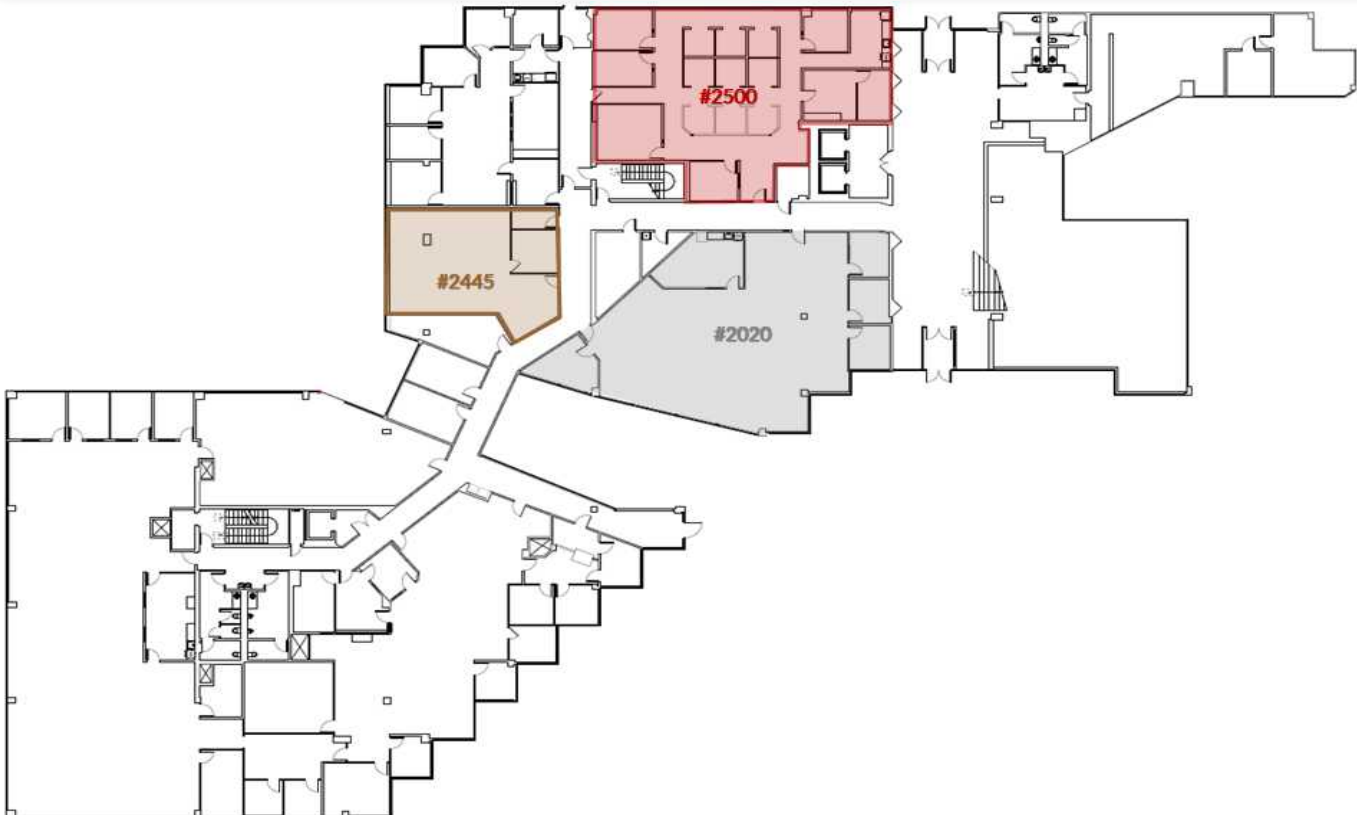


ROCK POINTE

## AVAILABLE SPACE

## 2ND FLOOR

SUITE	LEASE RATE	RSF	DESCRIPTION
#2020	\$23.00 / SF	3,850	4 private office Open office Break room
#2445	\$23.00 / SF	1,483	1 private offices Open office
#2500	\$23.00 / SF	3,461	Private offices Open office



# ROCK POINTE WEST

Rock Pointe III  
1330 N. Washington St

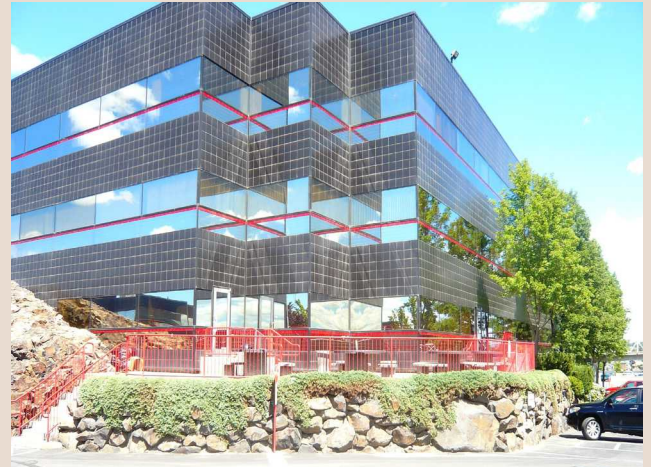


ROCK POINTE

## AVAILABLE SPACE

## 4TH FLOOR

SUITE	LEASE RATE	RSF	DESCRIPTION
#4300	\$23.00 / SF	1,682	3 Offices Open Area AVAILABLE 6.1.2024
#4400	\$23.00 / SF	6,841	Open office



Craig Soehren  
Broker  
509.755.7548  
craigs@kiemlehagood.com

Erik Nelson, SIOR  
Managing Broker  
509.755.7514  
erik.nelson@kiemlehagood.com



# ROCK POINTE WEST

Rock Pointe III  
1330 N. Washington St



ROCK POINTE

## AVAILABLE SPACE

## 5TH FLOOR

SUITE	LEASE RATE	RSF	DESCRIPTION	SUITE	LEASE RATE	RSF	DESCRIPTION
#5100	\$23.00 / SF	4,812	Reception area Conference room Open area Break room 2 private offices	#5300	\$23.00 / SF	4,045	Reception area Conference room Open area Break room 2 private offices
#5400	\$23.00 / SF	1,802	Open area 4 private offices				



ROCK POINTE

Craig Soehren

Broker

509.755.7548

craigs@kiemlehagood.com

Erik Nelson, SIOR

Managing Broker

509.755.7514

erik.nelson@kiemlehagood.com

