



5506 HATHAWAY BUILDING

GEORGETOWN OFFICE SPACE AVAILABLE

5506 Sixth Avenue S Seattle WA 98108

OFFICE SPACE
AVAILABLE
1,317-4,549 SF



CHAD WALDBAUM, CCIM
425.531.7098
chadw@jshproperties.com

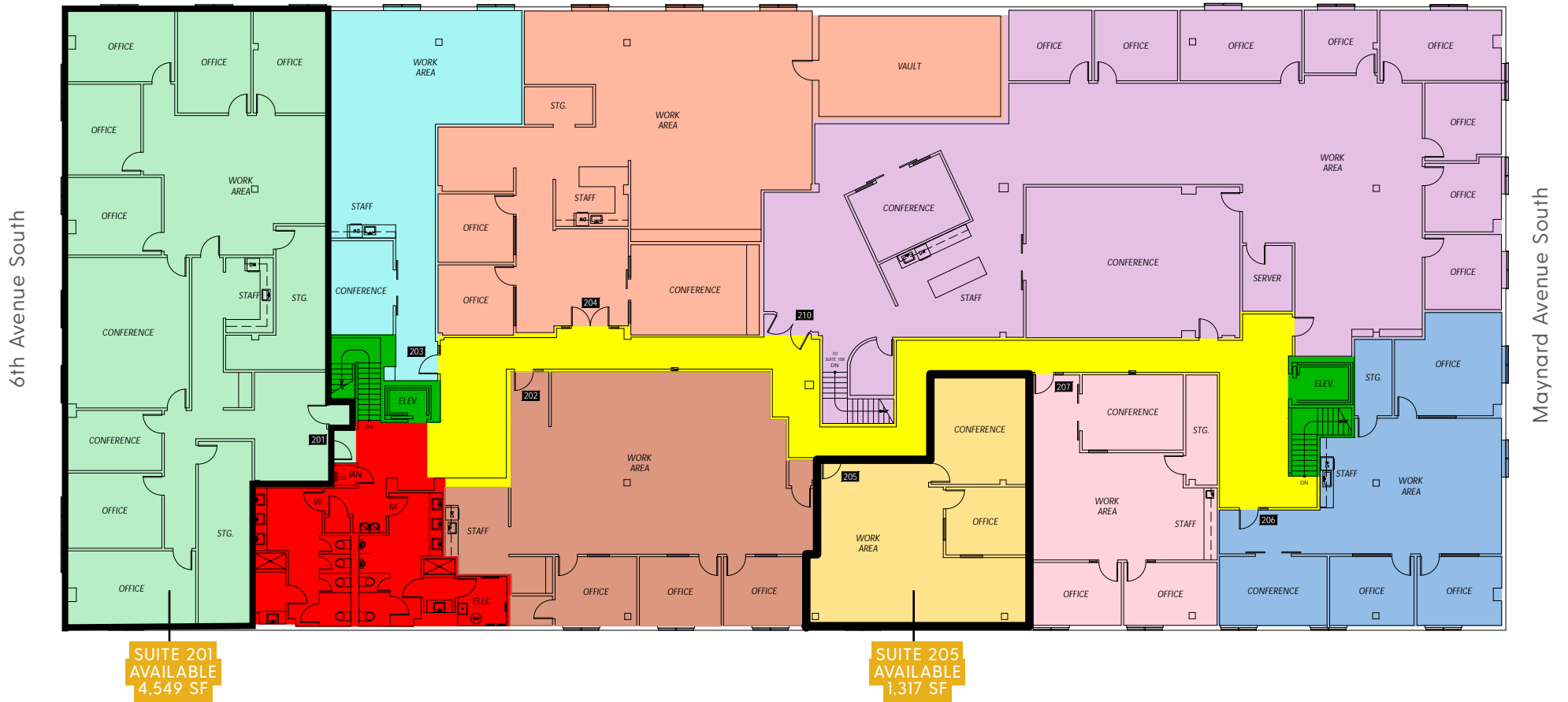
REESE VELTON
425.283.5484
reesev@jshproperties.com

 JSH | PROPERTIES, INC.

HATHAWAY BUILDING - 2ND FLOOR OFFICE SPACE
 5506 SIXTH AVENUE S - SEATTLE WA 98108

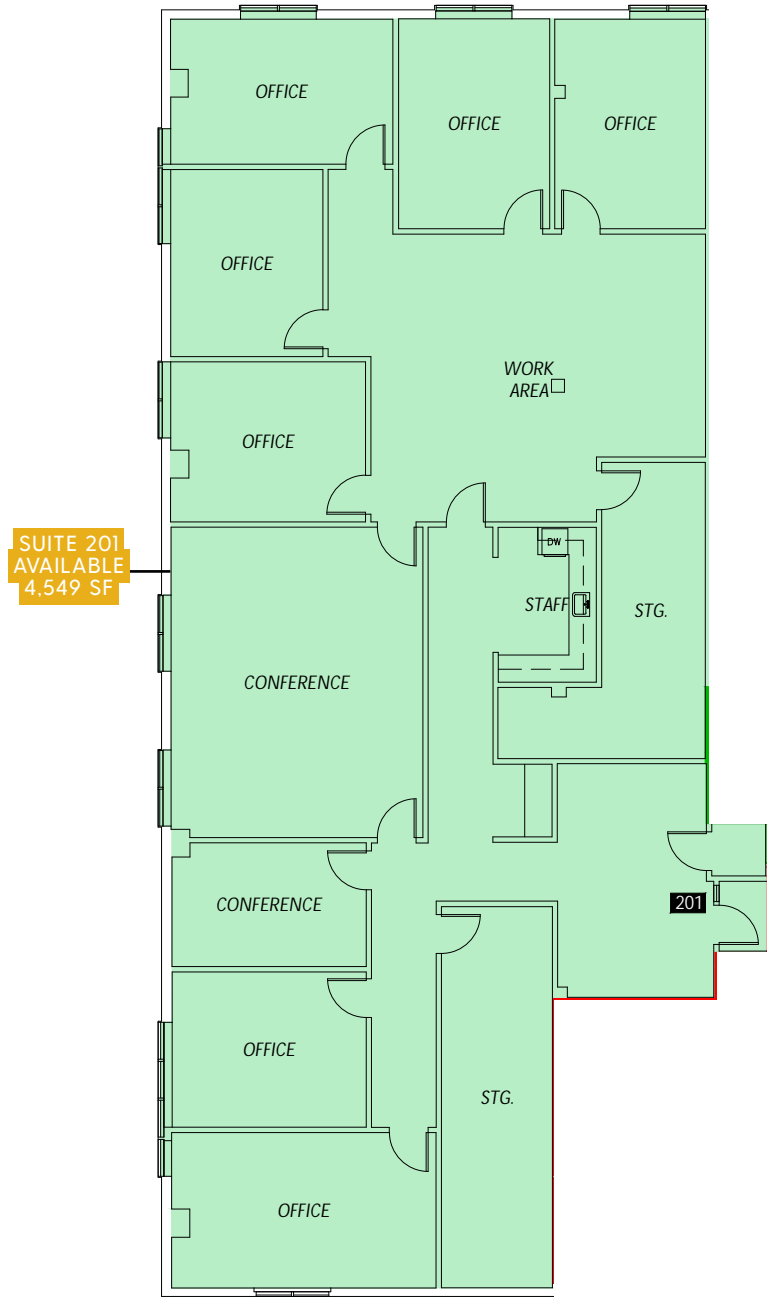
AVAILABLE	RSF	BASE RENT	NNN	
SUITE 201	4,549	\$24.00/SF	\$7.53	Open workspace, conference room, private offices
SUITE 205	1,317	\$24.00/SF	\$7.53	Open workspace, conference room, private office

South Lucile Street



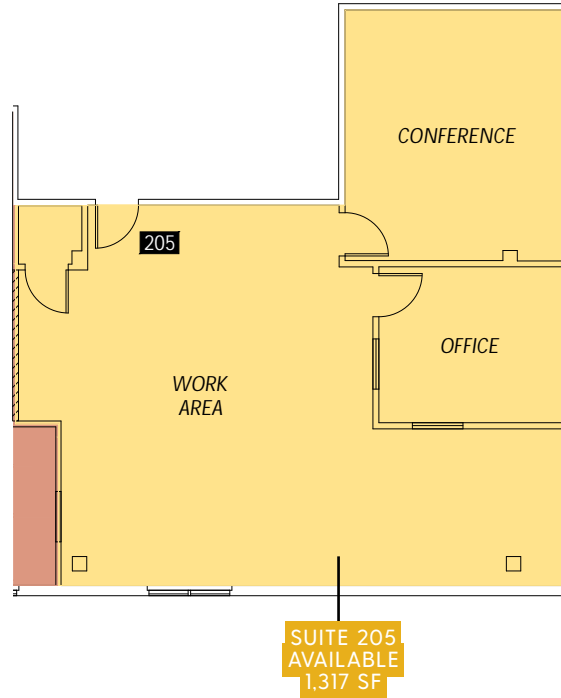
HATHAWAY BUILDING - 2ND FLOOR OFFICE SPACE

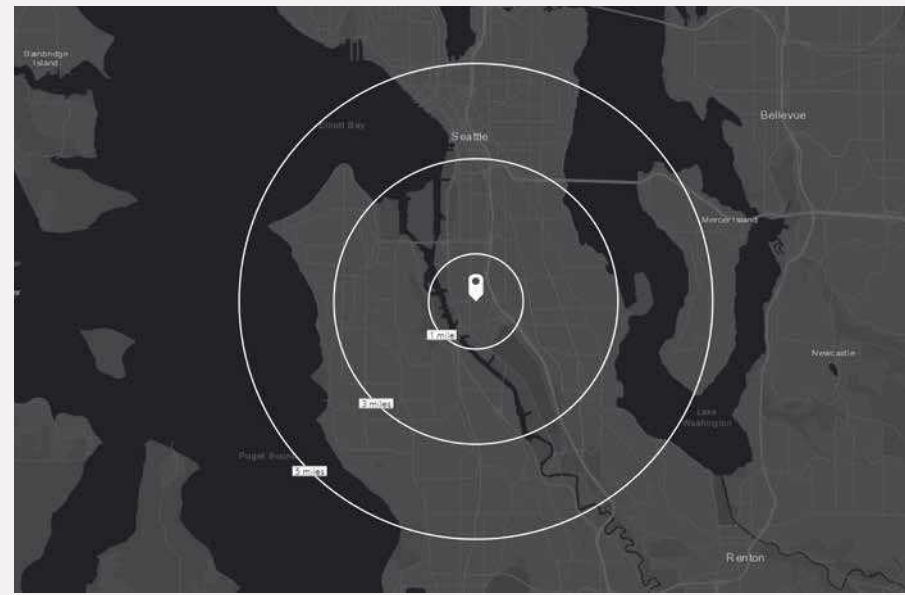
5506 SIXTH AVENUE S - SEATTLE WA 98108



HATHAWAY BUILDING - 2ND FLOOR OFFICE SPACE

5506 SIXTH AVENUE S - SEATTLE WA 98108





HATHAWAY BUILDING is located in the heart of the Design District in Georgetown, just south of Downtown Seattle, and within a few blocks of Georgetown Squared, Seattle Design Center, USPS, Daltile, & McKinstry.

Interior designers, artists, workrooms, and architects enjoy convenient access to international architectural design brands such as Trammell-Gagne, and Jennifer West. Georgetown's Art Walk happens every second Saturday of the year.

Quick access to I-5 and Highway 99. Offering surface lot and street parking, the Hathaway Building is located within walking distance to several lunch hot spots and is a ten minute drive or bus ride to Downtown Seattle and Boeing.





COFFEE

- ESPRESSO BY DESIGN
- BROTHER JOE
- ALL CITY COFFEE
- FRAN'S CHOCOLATES
- LADY BUG ESPRESSO
- STARBUCKS
- HANGAR CAFE
- FIVE HORIZONS ESPRESSO
- CAPETAL QUILOMBO CAFE
- PORTSIDE COFFEE COMPANY
- CAVU CAFE
- BARES AND WATSON FINE TEAS
- RAINIER COMMONS

RESTAURANTS

- CONSCIOUS EATERY
- NAKAYAMA SALES
- LECT'S SOUP SHOP
- THE BLU GROUSE
- URBAN CHICKENS
- PHO SRIRACHA
- SUBWAY
- MARCO POLO BAR & GRILL
- THE DOG HOUSE BAR & GRILL
- LUCKY CHINESE RESTAURANT
- CUTTING BOARD
- STELLAR PIZZA, ALE & COCKTAILS
- PIG IRON BBQ
- SLIM'S LAST CHANCE

Located just minutes south of Downtown Seattle, Georgetown's lively cultural community is home to over 40 galleries, diners, nightclubs, coffee houses, art studios, bookstores and more.

Every second Saturday visitors attend the Georgetown's Art Walk "Art Attack" featuring over 20 local artists venues.

- 1 Oasis Equinox outpost
- 2 studio e gallery
- 3 Scarlet Ibis
- 4 Side Rail Collective
- 5 Fogue Studios & Gallery
- 6 Georgetown Trailer Park
- 7 Tinte Cellars
- 8 Jellyfish Brewing
- 9 All City Coffee
Fanatgraphics Bookstore
- 10 Koplin Del Rio
Smith + Fox Salon
- 11 Housewright
- 12 Prairie Underground
- 13 whippersnapper
- 14 Mini Mart City Park
- 15 Equinox Studios
A. The Annex
B. Big Blue
C. The Factory
D. The Living Room
- 16 Seattle Artist League
Equinox outpost



HATHAWAY BUILDING | OFFICE AVAILABLE FOR LEASE