

# Pine & Boylston

610 E. Pine Street | Seattle, WA 98122

NEWMARK

ASANA  
PARTNERS



# Property Highlights

- Iconic Capitol Hill location at the corner of Pine & Boylston, steps away from the hottest bars and restaurants in the city
- Historic building with easy access to downtown Seattle and numerous nearby parking and transportation options
- Only five blocks from the Capitol Hill Link light rail station
- Open ceiling creative spaces with high-end finishes
- 30+ restaurants, bars and amenities within three blocks
- Close proximity to Broadway, and I-5 North & South access



99

Walk Score



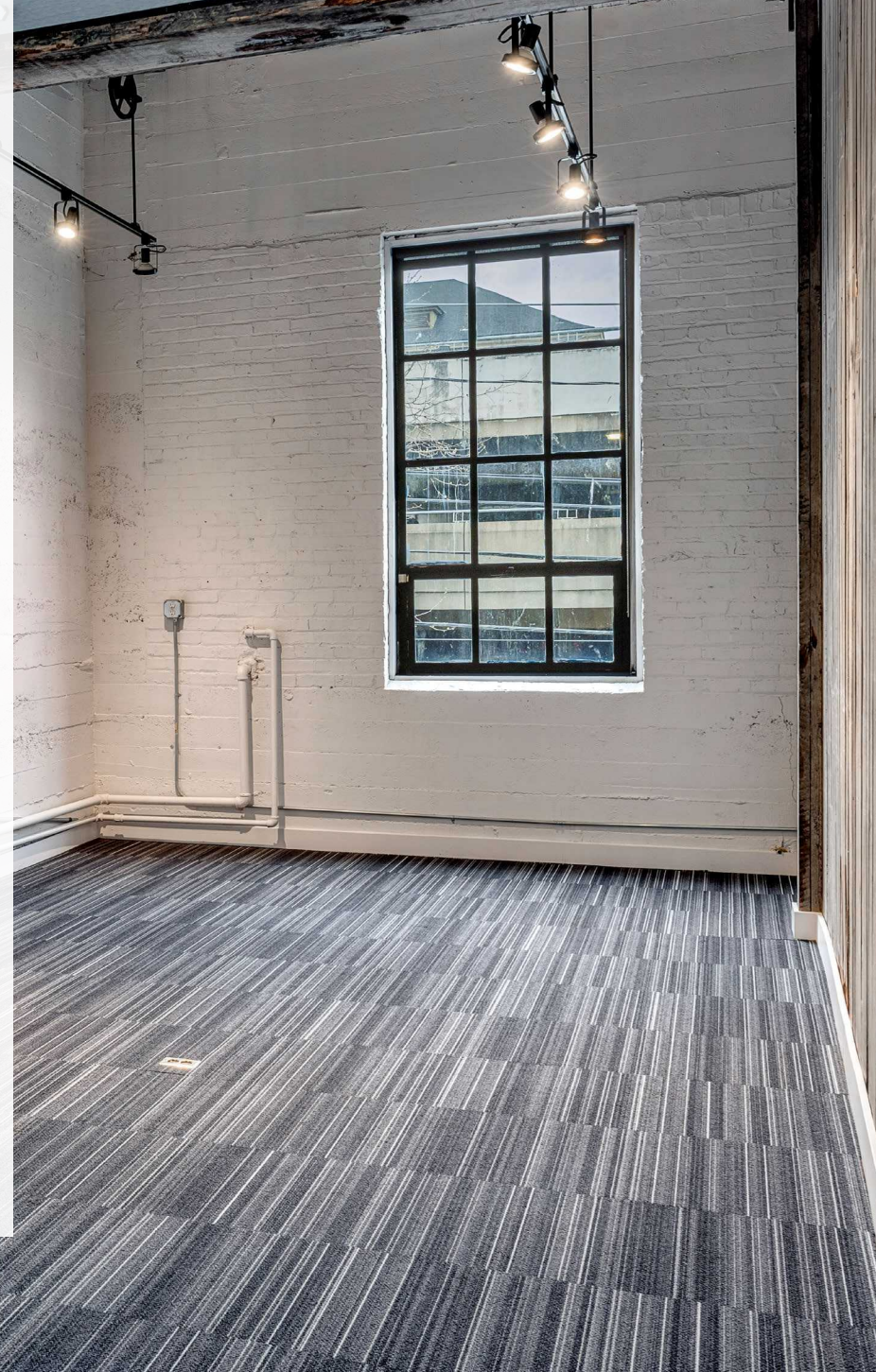
99

Transit Score



82

Bike Score





# Location





# Availabilities

---

Suite 202



+/-1,989 RSF

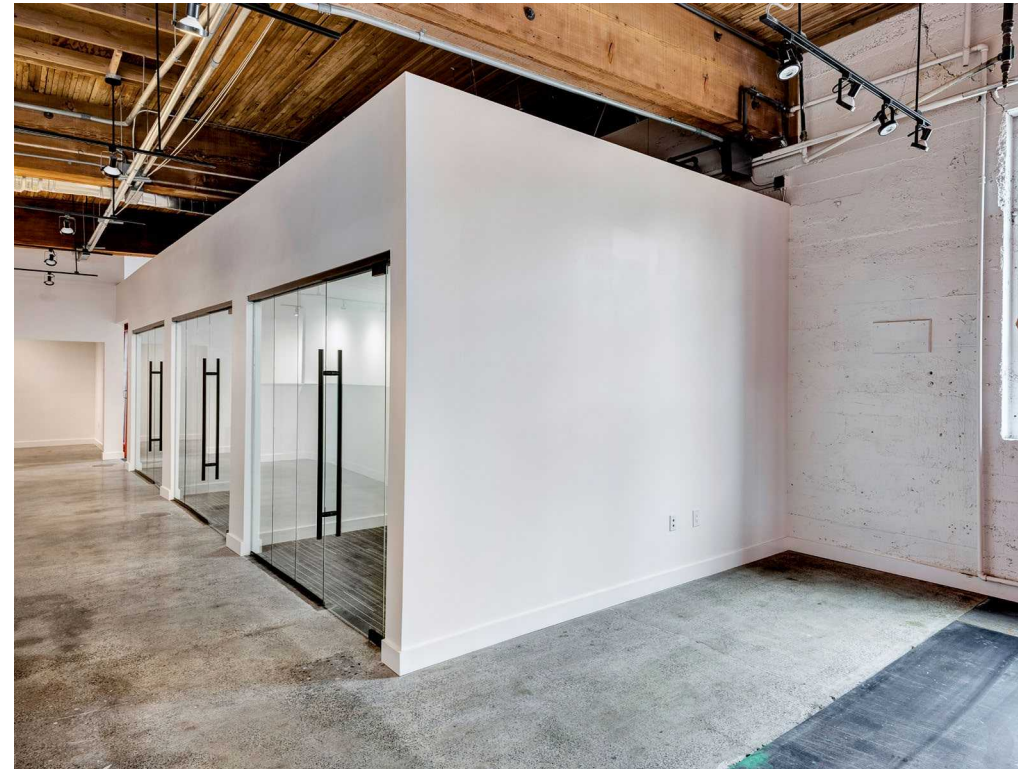
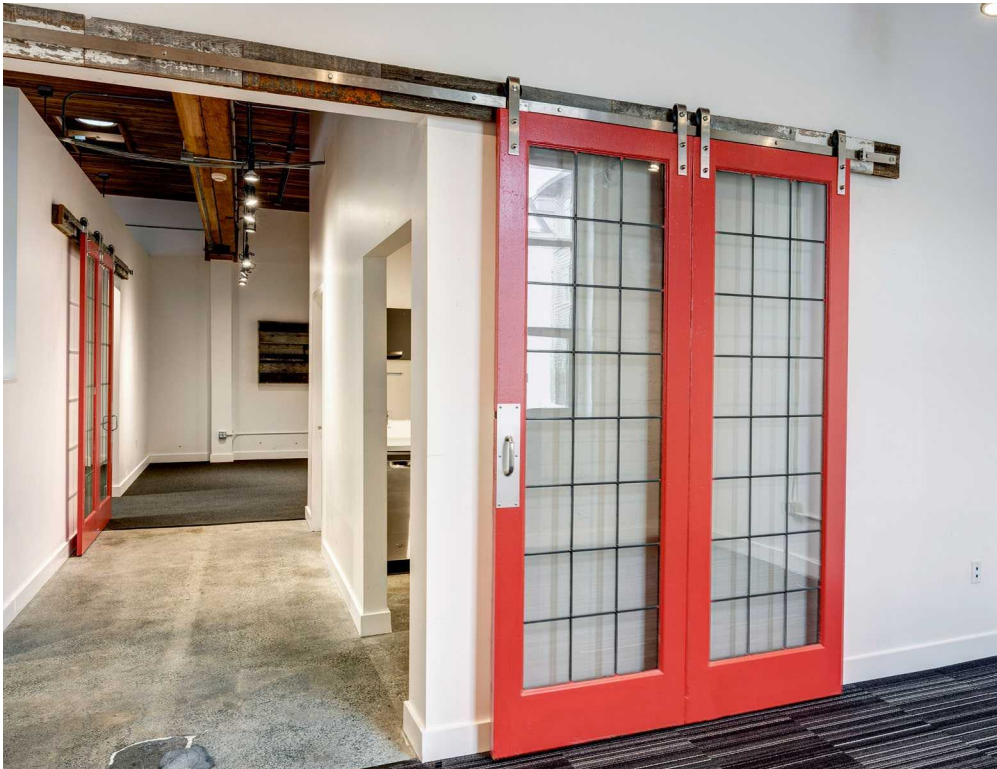
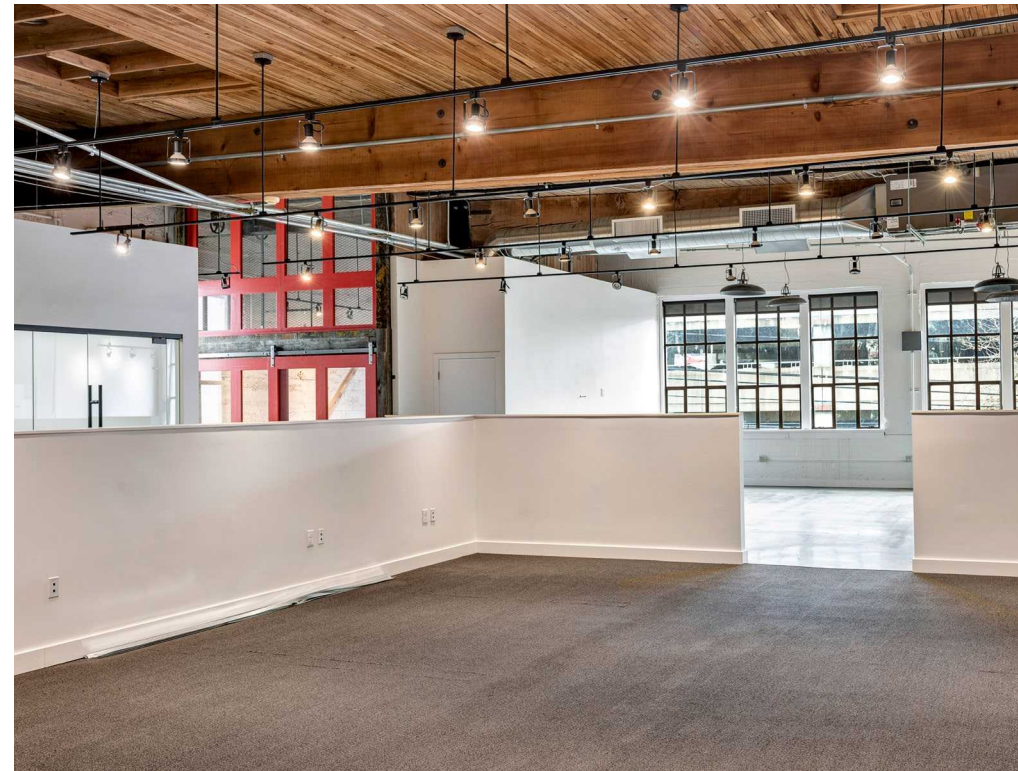
- Available Now
  - Large windows provide ample natural light
  - Open build-out with large meeting areas
- 

Suite 310

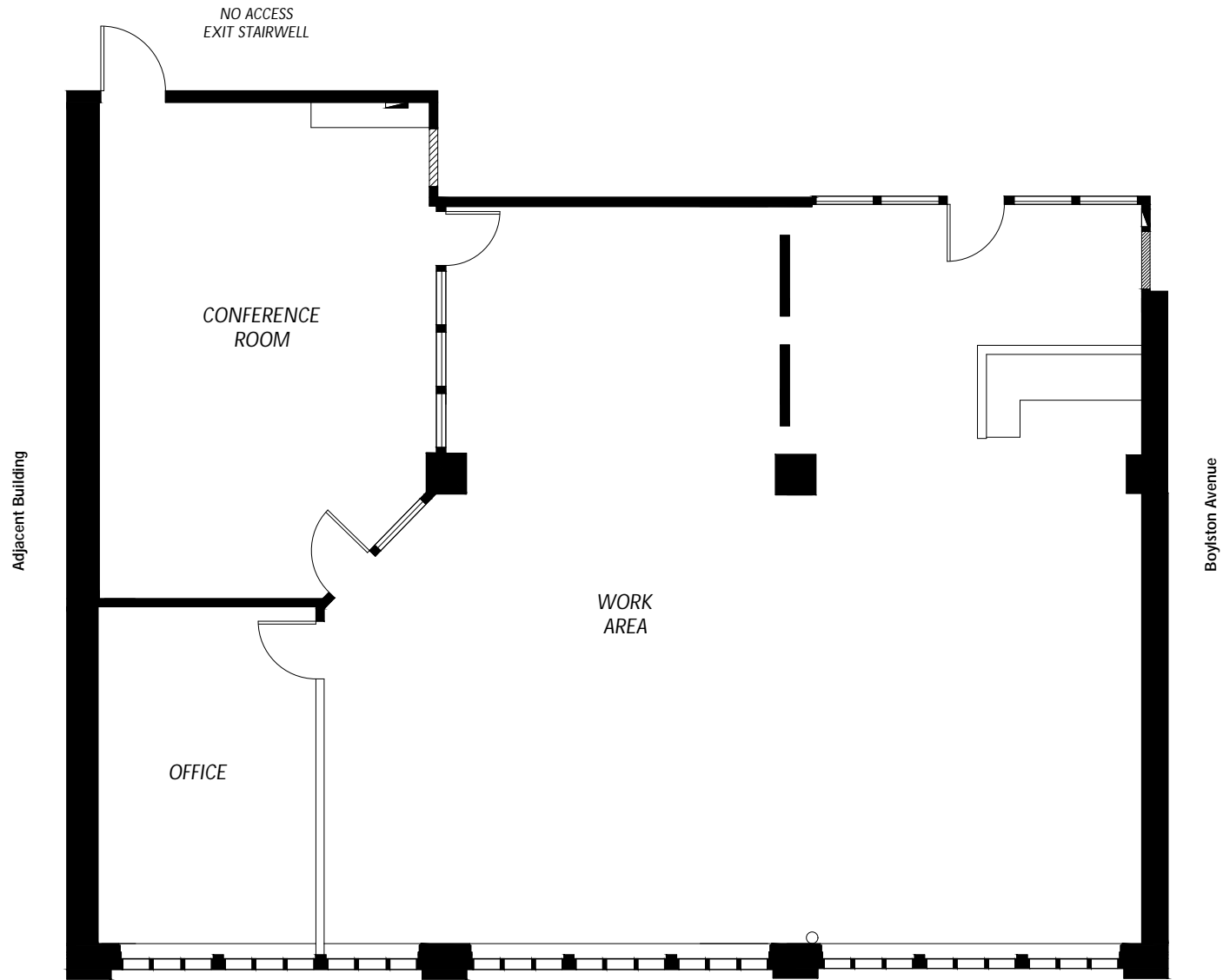


+/- 4,505 RSF

- Available Now
  - Exposed wood beam ceilings with above-standard clear height
  - Gorgeous polished concrete floors
  - Highly-functional existing build-out with a reception, conference room, four private offices, and a kitchenette
- 

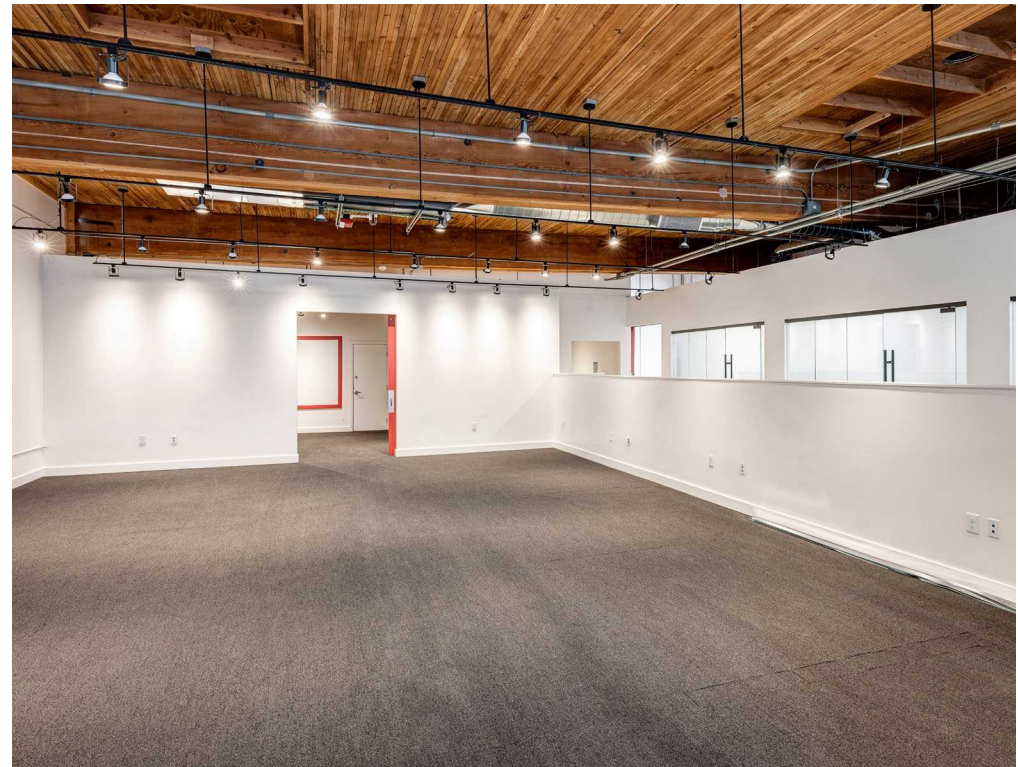
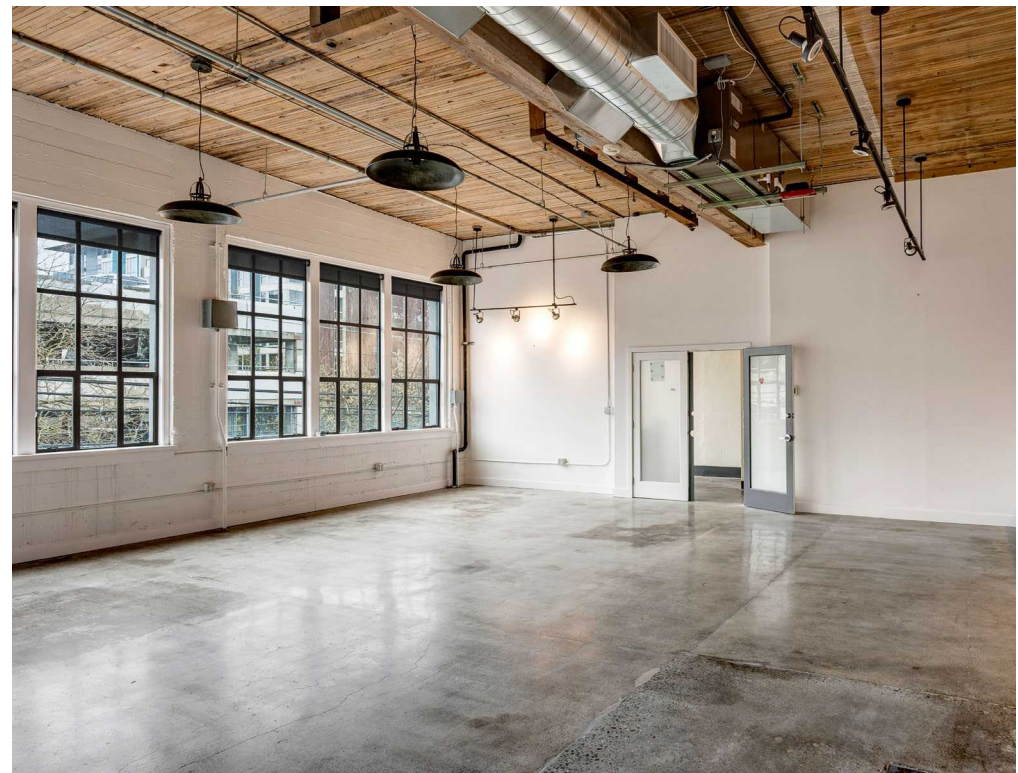
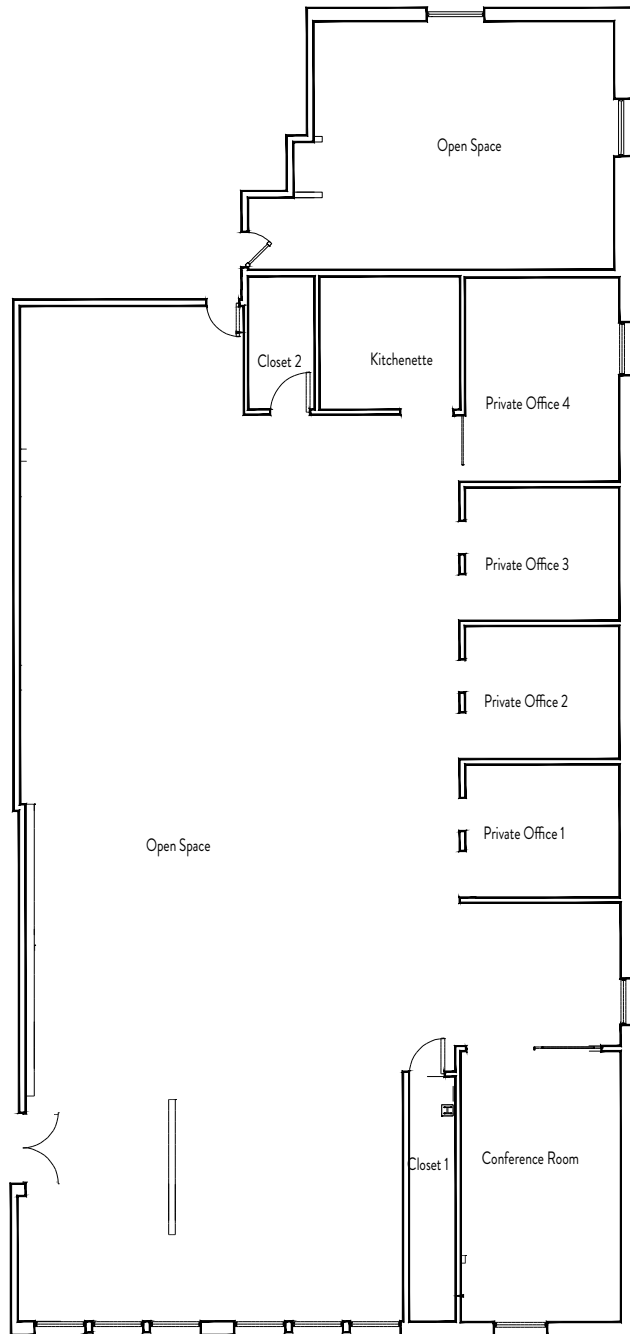


# Suite 202 - +/-1,989 RSF





# Suite 310 - +/- 4,505 RSF





# Pine & Boylston

610 E. Pine Street | Seattle, WA 98122

Contact us for more details:

Cavan O'Keefe  
Senior Managing Director  
206.395.2903  
cavan.okeefe@nmrk.com

Daniel Seger  
Senior Managing Director  
206.487.5163  
daniel.seger@nmrk.com

Anne Marie Koehler  
Senior Managing Director  
206.487.5167  
annemarie.koehler@nmrk.com

Erika Koehler  
Senior Managing Director  
206.487.5168  
erika.koehler@nmrk.com

**NEWMARK**

**A S A N A**  
P A R T N E R S