



By the Numbers

(1-MILE)

WALK SCORE

99

MEDIAN AGE

36

EDUCATIONAL
ATTAINMENT

71%

AVERAGE HH INCOME

\$150,131

POPULATION

96,136

TOTAL GLA OWNED (SF)

37,365



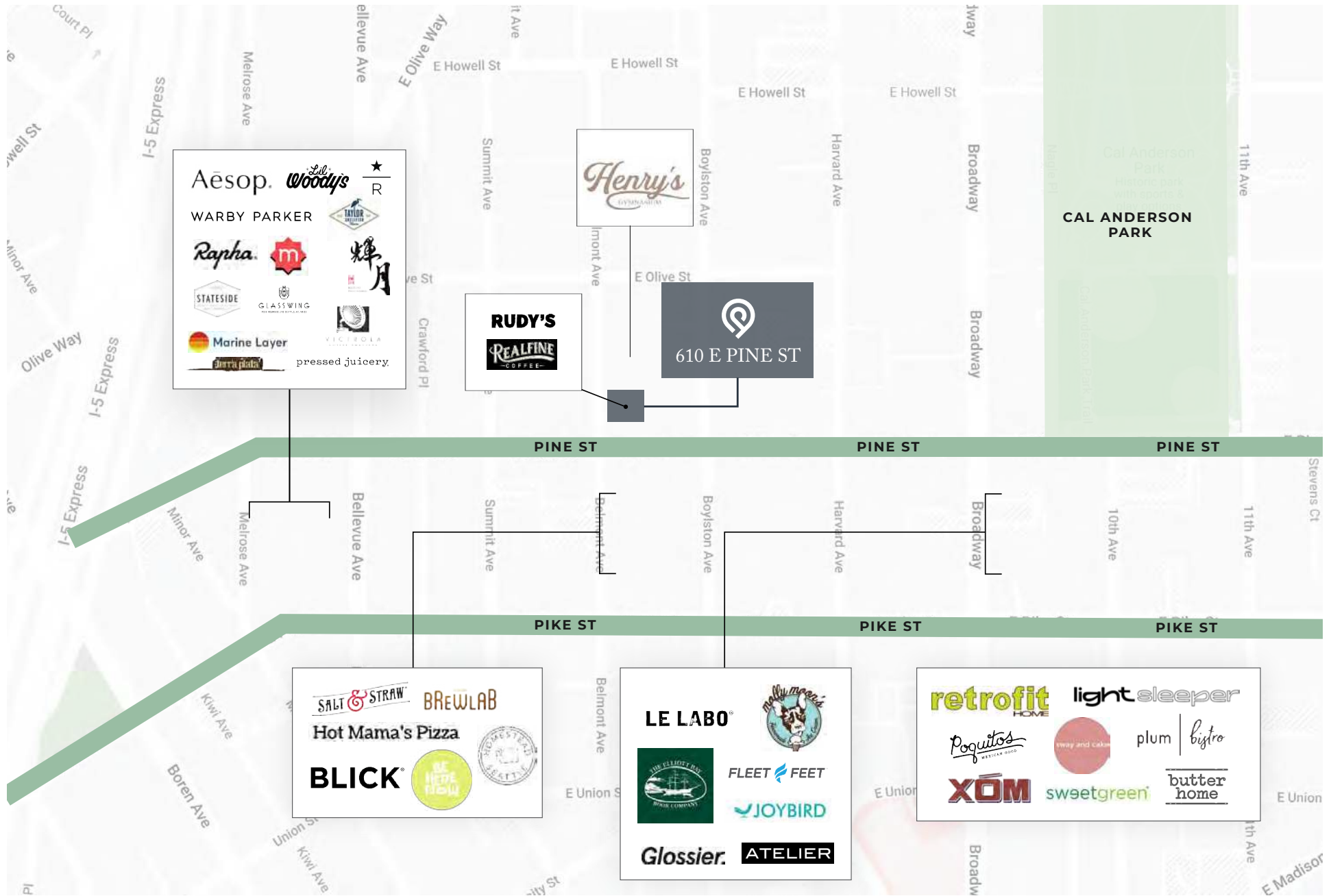
Welcome to *Capitol Hill*

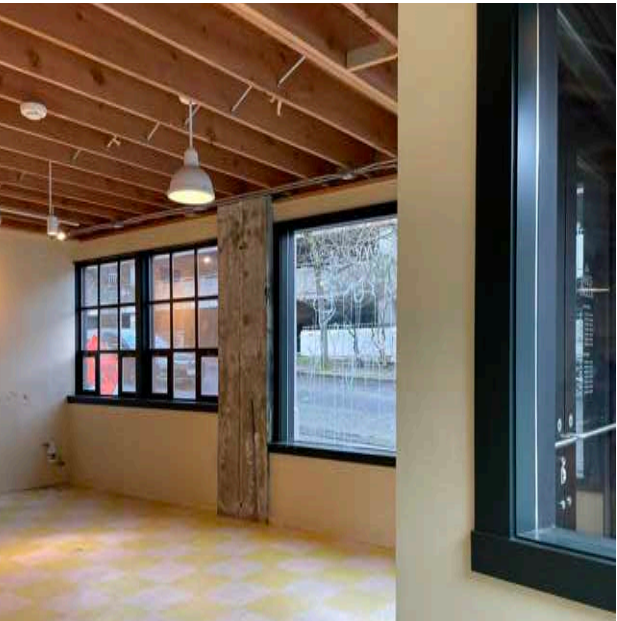
Experience peak Seattle culture in the Emerald City's inimitable, vibrant Capitol Hill district.

- Capitol Hill is a diverse, eclectic neighborhood, a highly walkable hub for arts and nightlife with a strong sense of community
- Home to some of Seattle's wealthiest neighborhoods as well as historic homes and apartments, counterculture institutions, and a thriving LGBTQ population
- Unbeatable A+ overall Niche grade, driven by highest marks for commute, nightlife, outdoor activities, and health & fitness
- Concerts and outdoor theater events are held year-round at Volunteer Park, which also features the Seattle Asian Art Museum and the Volunteer Park Conservatory
- Seattle is famous for coffee—and Capitol Hill is the epicenter, with prominent locally owned coffeeshops flourishing alongside the big national brands
- Famous music venues, historic movie theaters, trendy restaurants, indie bookstores, local shops, and brewpubs galore round out Capitol Hill's unbeatable lineup of amenities



Our Location



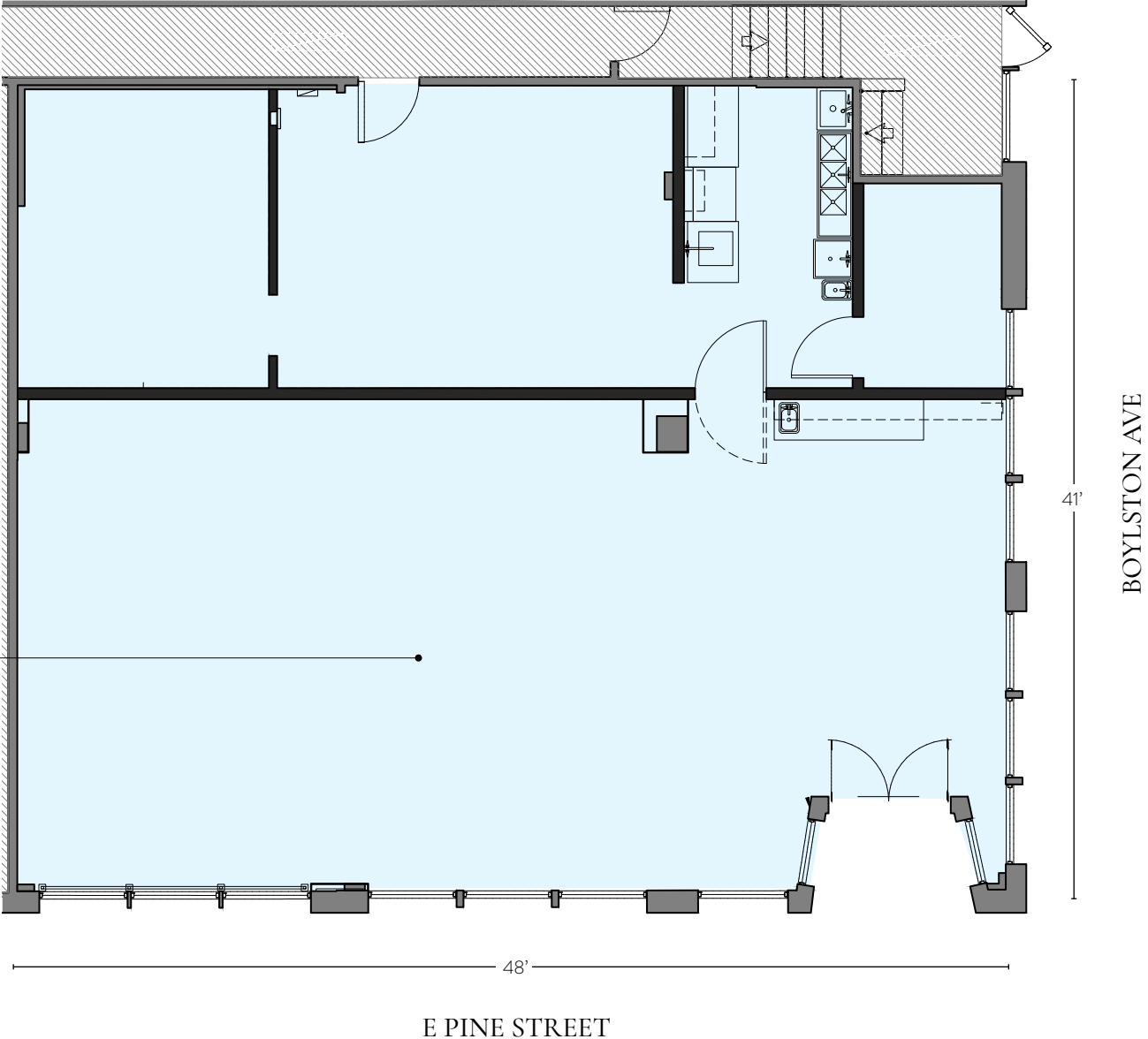


610 E Pine St
UNIT C110

Project Details

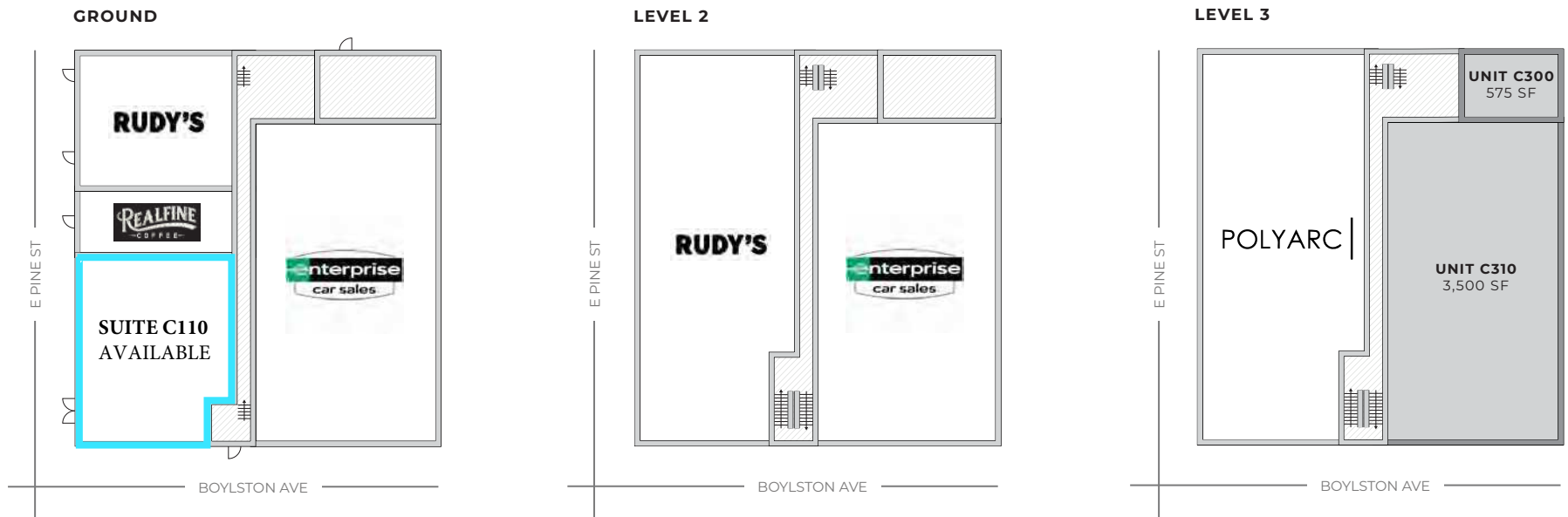
RETAIL AVAILABLE	+/- 1,908 RSF
ASKING RATE	Call for Rates
NNN'S (estimated)	\$9.26 PSF
TENANT IMPROVEMENTS	Negotiable
AVAILABLE	Available Now

 VIEW VIRTUAL TOUR



610 E Pine St Site Plan

 AVAILABLE  LEASED





Get In Touch

NEWMARK

RETAIL

Anne Marie Koehler

annemarie.koehler@nmrk.com

Erika Koehler

erika.koehler@nmrk.com

OFFICE

Daniel Seger

daniel.seger@nmrk.com

Cavan O'Keefe

cavan.okeefe@nmrk.com

ASANA PARTNERS

Clare Walsh

cwalsh@asanapartners.com

Mackenzie Gray

mgray@asanapartners.com