

SUSSMAN BUILDING

23,400 SF Office Building Sale/Lease



LISTING INFORMATION

| | |
|----------------------|--|
| ADDRESS: | 2156 Pacific Avenue S, Tacoma WA |
| AVAILABLE SF: | 8,000 - 23,400 SF |
| SALE PRICE: | \$5,500,000 |
| LEASE RATE: | \$19.00 SF/yr (NNN) |
| YEAR BUILT: | 1929 |
| PARCEL NO: | 2021040090 |
| ZONING: | WR CONS - Warehouse/Residential District & Conservation District |

COMMENTS

Three story single or multi tenant office building. Office/School buildout with classrooms, restrooms, elevator. Downtown Tacoma, adjacent to University of Washington and Brewery Blocks Tacoma

LOCATION



We obtained the information above from sources we believe to be reliable. However, we have not verified its accuracy and make no guarantee, warranty or representation about it. It is submitted subject to the possibility of errors, omissions, change of price, rental or other conditions, prior sale, lease or financing, or withdrawal without notice. We include projections, opinions, assumptions or estimates for example only, and they may not represent current or future performance of the property. You and your tax and legal advisors should conduct your own investigation of the property and transaction.



SUSSMAN BUILDING

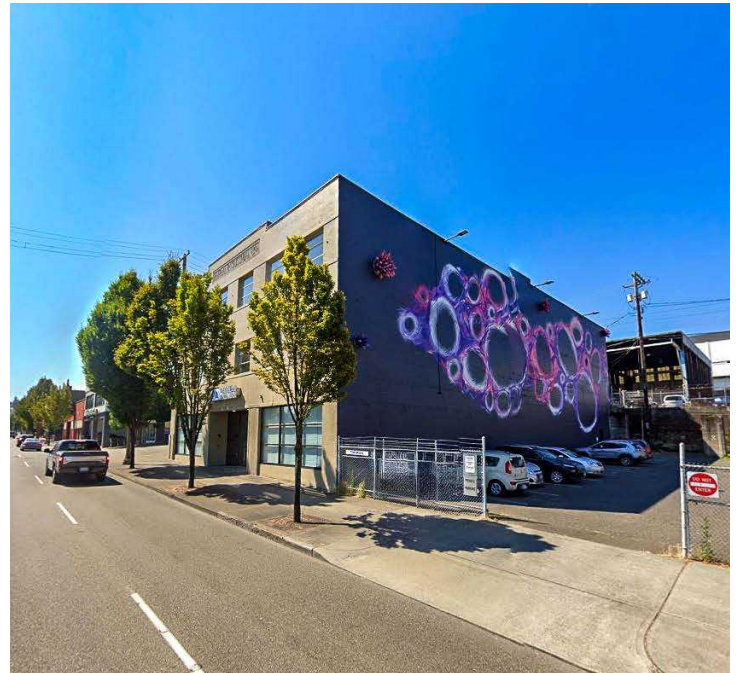
23,400 SF Office Building Sale/Lease

Kyle Prosser
kprosser@lee-associates.com
253.444.3025

John Bauder, CCIM
jbauder@lee-associates.com
253.238.0043

Bruce Barker
bbarker@lee-associates.com
253.238.0048

Harrison Laird
hlaird@lee-associates.com
253.238.0044



SUSSMAN BUILDING

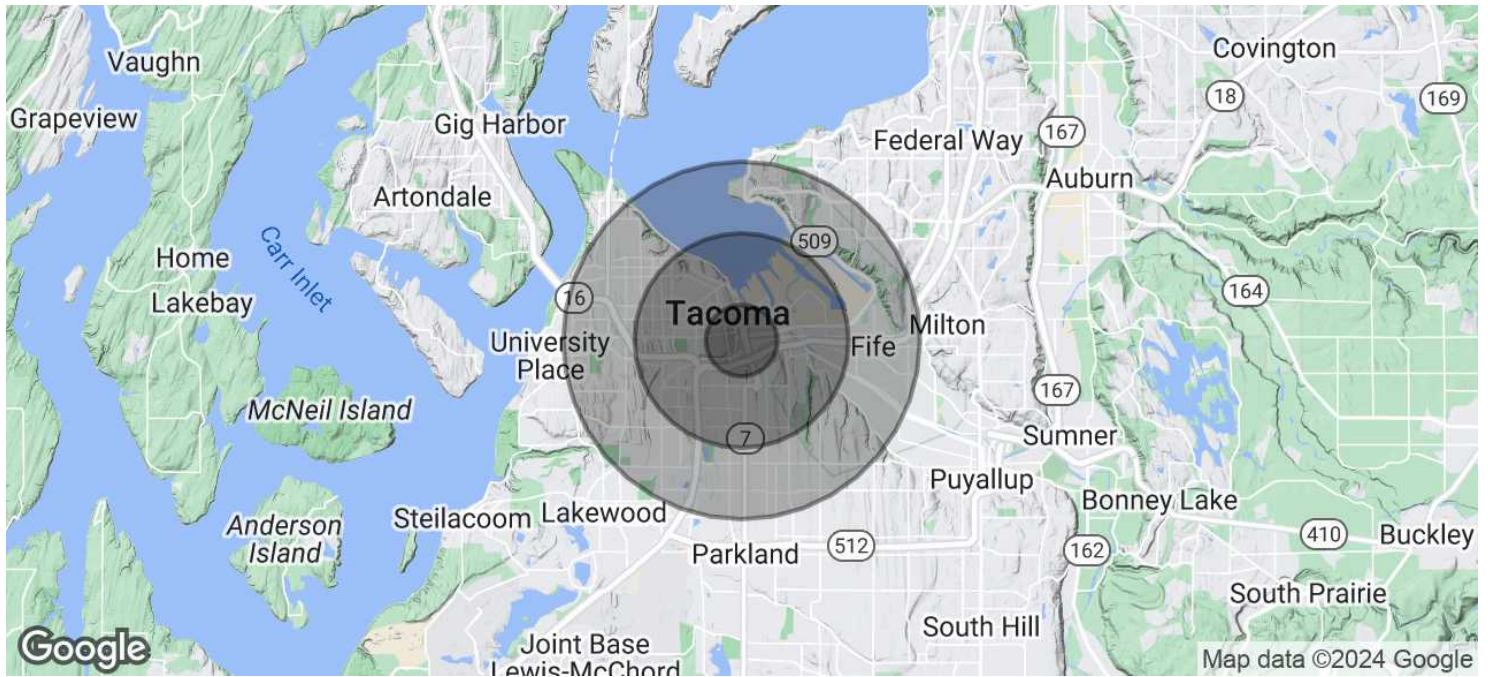
23,400 SF Office Building Sale/Lease

Kyle Prosser
kprosser@lee-associates.com
253.444.3025

John Bauder, CCIM
jbauder@lee-associates.com
253.238.0043

Bruce Barker
bbarker@lee-associates.com
253.238.0048

Harrison Laird
hlaird@lee-associates.com
253.238.0044



| POPULATION | 1 MILE | 3 MILES | 5 MILES |
|----------------------|-----------|-----------|-----------|
| TOTAL POPULATION | 13,380 | 107,900 | 271,373 |
| AVERAGE AGE | 39 | 38 | 39 |
| AVERAGE AGE (MALE) | 39 | 38 | 38 |
| AVERAGE AGE (FEMALE) | 40 | 39 | 40 |
| HOUSEHOLDS & INCOME | 1 MILE | 3 MILES | 5 MILES |
| TOTAL HOUSEHOLDS | 5,692 | 43,776 | 106,456 |
| # OF PERSONS PER HH | 2.4 | 2.5 | 2.5 |
| AVERAGE HH INCOME | \$80,102 | \$97,657 | \$106,852 |
| AVERAGE HOUSE VALUE | \$434,522 | \$516,116 | \$533,431 |

Demographics data derived from AlphaMap

SUSSMAN BUILDING

23,400 SF Office Building Sale/Lease

Kyle Prosser
kprosser@lee-associates.com
253.444.3025

John Bauder, CCIM
jbauder@lee-associates.com
253.238.0043

Bruce Barker
bbarker@lee-associates.com
253.238.0048

Harrison Laird
hlaird@lee-associates.com
253.238.0044

